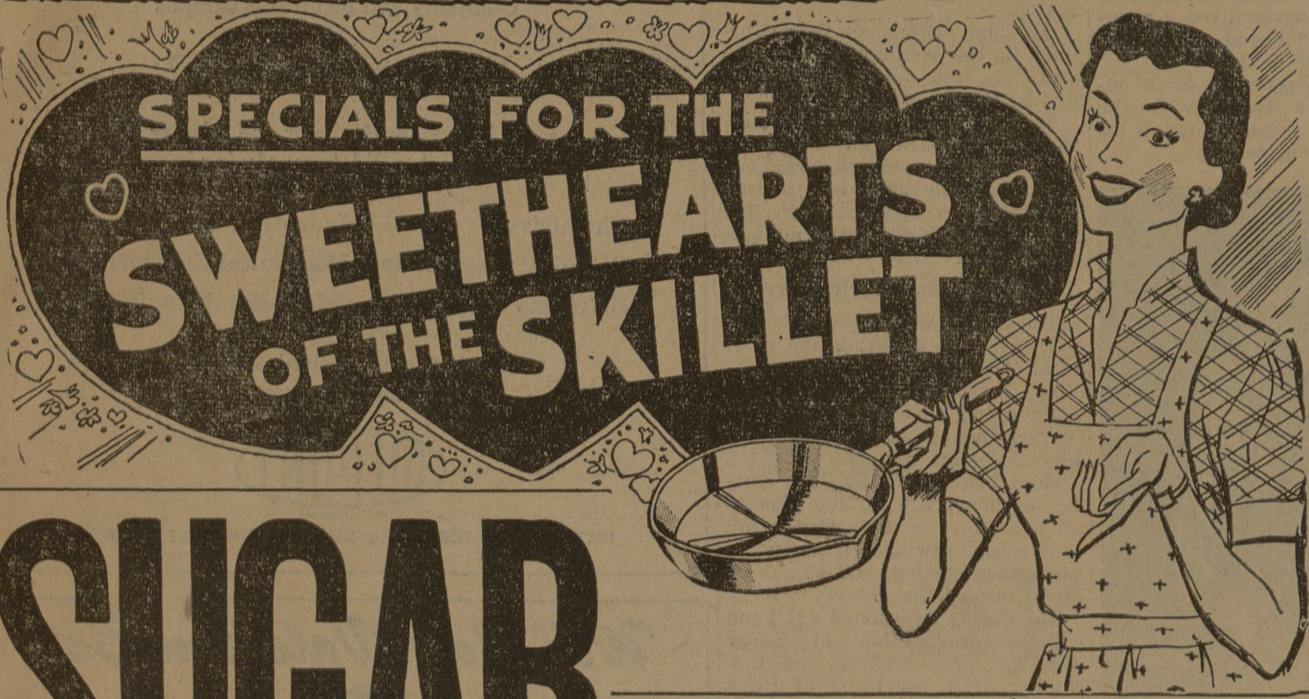


# GENERAL ELECTRIC WASHING MACHINE

## Absolutely FREE!

\$189.95 Model 472 De Luxe Wringer Washer . . . to be given away FREE . . . to some lucky person. See it on display in our store. No contest - no guessing - nothing to send off. We are giving this away. . . . We want you to have a chance. You will not want to miss this opportunity. . . You will not have to be present to win.

— SEE DETAILS POSTED IN STORE —



# SUGAR

Imperial  
Pure  
Cane  
5 lbs. Only

## 35c

- Nu Crest—14 Oz.  
**Tomato Catsup . . . . . 10c**
- Del Monte—303 Size  
**Yellow Cream Corn . . 15c**
- Del Monte—No. 2 Can  
**Sliced Pineapple . . . . 25c**

- Kimbell's—12 Oz.  
**WAFFLE SYRUP . . . . . 15c**
- Bel Dine—No. 2  
**SPINACH . . . . . 9c**
- Happy Host—303 Size  
**PETIT POIS PEAS . . . . . 15c**
- GLADIOLA WHITE CAKE MIX with  
**ADAMS EXTRACT . . . . . Both 33c**
- DIAMOND WALNUTS . . . . . lb. 39c**
- Moonrose—No. 2 1/2 Can  
**WHOLE SPICED PEACHES . . . . 29c**
- Armour's  
**POTTED MEAT . . . . . 3 cans 25c**
- Rath's Blackhawk—12 Oz.  
**LUNCHEON MEAT . . . . . 43c**
- Sun Valley  
**MARGARINE . . . . . lb. 17c**
- WESSON OIL . . . . . pt. 32c**
- Pillsbury's  
**HOT ROLL MIX . . . . . pkg. 27c**
- 1/2 Gallon  
**LILLY MELLORINE . . . . . 59c**
- 80 Count  
**CHARMIN NAPKINS . . . . . 2 boxes 23c**
- No. 1 T  
**HONEY BOY SALMON . . . . . 39c**
- No. 1 Can  
**DIAMOND TOMATOES . . . . . 3 cans 29c**
- BABO CLEANSER . . . . . 2 cans 25c**
- 7 Oz.  
**JOY LIQUID SUDS . . . . . 25c**
- 8 Oz.  
**POST TOASTIES . . . . . 15c**
- Nibs  
**DOG FOOD WITH LIVER . . . . 2 cans 21c**
- Italian Long  
**SPAGHETTI . . . . . lb. 19c**
- Kimbell's—2 1/4 Oz.  
**SHOESTRING POTATOES . . . . 2 for 23c**
- Kimbell's—12 Oz.  
**GRAPE JELLY . . . . . 19c**
- Diamond—300 Size  
**PEAS & CARROTS . . . . . 9c**
- Diamond—300 Size  
**PEAS & POTATOES . . . . . 9c**
- No. 2 Cans

- ### Del Monte Fine Foods
- No. 2 Cans  
**FANCY SPINACH . . . . . 2 cans 25c**
  - 303 Size  
**CUT GREEN BEANS . . . . . 2 cans 39c**
  - 8 Oz.  
**TOMATO SAUCE . . . . . 3 cans 23c**
  - 303 Size  
**GREEN LIMA BEANS . . . . . 27c**
  - No. 2 Cans  
**PINEAPPLE JUICE . . . . . 2 cans 25c**
  - No. 2 Cans  
**ORANGE JUICE . . . . . 2 cans 25c**
  - No. 2 1/2 Can  
**FRUIT COCKTAIL . . . . . 35c**
  - 303 Size  
**SLICED PEACHES . . . . . 5 cans \$1.00**

- ## DRUGS
- Lib—\$1.25 Size  
**HOME PERMANENT REFILL . . . . 69c**
  - Large Size—Phillips  
**MILK OF MAGNESIA . . . . . 29c**
  - Bottle of 24's  
**BAYER ASPIRIN . . . . . 15c**
  - Squibb's  
**MINERAL OIL . . . . . pint 49c**
  - \$1.00 Value  
**ONE-A-DAY VITAMINS . . . . . 79c**
  - Giant Size  
**COLGATE TOOTH PASTE . . . . . 33c**
  - 43c Value  
**ARRID DEODORANT . . . . . 29c**
  - 60c Size  
**FITCH'S SHAMPOO . . . . . 43c**
  - Goodrich  
**RUBBER GLOVES . . . . . pair 69c**

- FOLGER'S Coffee . . . . . lb. 79c**
- Crisco SHORTENING . . . . . 3 lbs. 79c**
- GOLD MEDAL Flour . . . . . 5 lbs. 38c**
- DAIRICRAFT Milk . . . . . Tall Cans 2 for 27c**
- Jello . . . . . 3 Pkgs. 23c**

- ### FROZEN FOODS
- 6 Oz.  
**BIRDSEYE ORANGE JUICE . . . . 2 for 29c**
  - Lolia  
**BREADED SHRIMP . . . . . pkg. 55c**
  - Pictsweet  
**CAULIFLOWER . . . . . pkg. 25c**
  - Pictsweet  
**MIXED VEGETABLES . . . . . pkg. 19c**
  - Pictsweet  
**GREEN PEAS . . . . . pkg. 19c**

- ### THE CENTER INN
- SPECIAL MENU THURS. THRU SATURDAY
- HALF FRIED TROUT with Green Salad, Tartar Sauce & French Fries . . . . . 60c**
  - HAMBURGER STEAK with Brown Gravy, Green Salad & French Fries . . . . . 65c**



- U. S.  
**PASCAL CELERY . ea. 8c**
- Seedless  
**GRAPEFRUIT . . . lb. 5c**
- LOUISIANA YAMS . . lb. 13c** | **GREEN BEANS . . . . lb. 9c**
- Extra Fancy  
**FIRM GREEN CABBAGE . . . . . lb. 1c**
- RED DELICIOUS APPLES . . . . . lb. 17c**



- 
- Your Weigh Ahead WITH OUR QUALITY MEATS**
- U. S. Grade—Good  
**VEAL ROUND STEAK . lb. 79c**
  - TURKEY HENS . . . . lb. 59c**
  - CHICKEN HENS . . . . lb. 39c**

The BIG Supermarket At  
Coulter Drive on Highway 6  
OPEN 7 DAYS A WEEK

OPEN ALL DAY SUNDAY  
SPECIAL PRICES GOOD SUNDAY

HOURS OPEN  
Open 7 days a week — 8 A.M. to 8 P.M.  
Except Friday & Saturday  
Open Until 9 P.M.

Right Reserved to Limit Quantities

- Armour's Cloverbloom  
**FRYERS—Whole . . . . . lb. 46c**
- Sliced  
**PRESSED HAM . . . . . lb. 49c**
- Armour's Star  
**BACON . . . . . lb. 59c**
- VEAL CHOPS . . . . . lb. 65c**
- VEAL SEVEN STEAK . . . . . lb. 69c**
- VEAL CHUCK ROAST . . . . . lb. 36c**
- VEAL CROWN ROAST . . . . . lb. 43c**
- VEAL STEW MEAT . . . . . lb. 29c**
- FRESH HAMBURGER . . . . . lb. 39c**
- FRESH PORK LIVER . . . . . lb. 29c**
- CRESCENT BACON . . . . . lb. 35c**