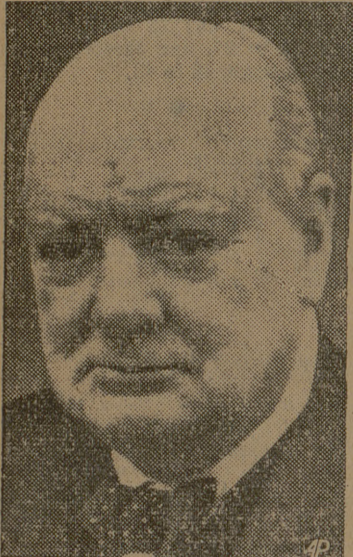


# World's Top Capitols Show Final Thoughts

Editor's Note: Correspondents of The Times in ten world capitals were asked last week to summarize the mood in their country as the year draws to a close. Their reports indicate a cautious confidence that the year ahead will bring some improvement in world conditions, and an attitude of watchful waiting to see what the new American Administration will do. (The Editors). The dispatches follow:

## WASHINGTON

"The collective mood of this city as it takes stock of itself and the



Churchill

world at the end of a perplexing and wearing year is, 'Well, it could have been a lot worse.' On the international front, if things have not improved as much as we hoped a year ago, at least they have not got as bad as some pessimists feared. The war in Korea drags dimly on, and therein lies the major disappointment of the year. But Communist aggression did not break out at those danger spots we were so anxiously watching a year ago.

And meanwhile, the arming of the Atlantic Powers—though behind schedule—has inched forward, and the economies of some of our Allies have slowly improved. Domestically, the capital's mood still is dominated by the outcome of November's election.

There are a few bitter-enders who regard the demise of the New Deal era as an unrelieved tragedy. But in the main, the attitude toward the Eisenhower Administra-



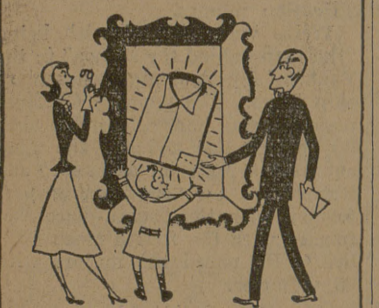
Truman Mrs. Truman

tion shades from a noncommittal, 'Okay, let's see what they can do,' to the eager expectancy of a New Age arriving with the dawn of Jan. 20."

## LONDON

"The Conservative Government enters the New Year in a mood of cautious confidence. In the past year huge deficits in the balance of payments have been transformed into modest surpluses, and inflationary trends at home have been checked.

Of course, factors beyond Britain's control can bring trouble. For example, terms of trade favor this country now, but a price rise in raw materials and food could reverse the slow but steady rise in gold reserves. So, too, could a



For a Perfectly Finished Shirt — Bring them to . . .

**CAMPUS CLEANERS**

drastic reduction in U. S. military aid. Thus, one of the most important intangibles facing the Government is the policy of the Eisenhower Administration. The Government feels that although the danger of a new World War has receded with increasing Western strength, the 'cold war' is likely to continue for many years."

## PARIS

"The fall of the Pinay Government at the year's end brought new uncertainty into the French political picture. During his nine months in office, Pinay had approximately stabilized prices, but his deflationary policy had caused a business recession, and inflation had already pushed prices high enough to curtail exports.

Nevertheless, it is likely that a new Premier will continue the Pinay policies. In diplomacy last year France gained recognition by the NATO Council that the defense of Indo-China was in the common interest and merited aid, but the increased aid that France seeks remains to be negotiated with Washington.

Meanwhile, European defense hangs in the balance pending ratification of the European Army treaty. The French fear the Indo-Chinese war may prevent France's



Hobby

arming equally with the Germans and that the joint European Army may handicap France in defending her overseas territories.

As for France's lagging foreign trade, the Marshall Plan Council believes that Europe can balance its accounts only with U. S. help in removing trade barriers."

## MOSCOW

"So far as can be judged by a foreign observer, the mood here is one of confidence that eventually all will be right with the world. This has been far and away the easiest year for the Russian people since 1939.

There is now a comparative abundance of consumer goods. And there does not appear to be any widespread feeling that 1952 has brought closer the prospect of a general war. This mood was strengthened at the year's end by the published replies of Stalin to



Green Murray

questions submitted by the diplomatic correspondent of The New York Times.

Regardless of how these replies were received in the U. S. and elsewhere, the Russian people were happy to hear that Stalin still believes a war between the Soviet Union and the United States is not inevitable."

## ROME

"The large crowds of Christmas shoppers demolishing high-priced stacks of cheaper and medium-priced goods all over Italy are evidence that the average Italian faces 1953 with new confidence. 'Every year that passes is a year gained,' one hears people say in congratulatory tones.

Because the crises since the beginning of the Korean war have been successfully overcome, many Italians have convinced themselves the uneasy status quo can be indefinitely maintained.

## TOKYO

"The Japanese at this time of year tie pine and bamboo limbs before their doors to show they are more prolific and longer-lived than other peoples.

The idea that the Japanese always re-emerge, whatever happens to their neighbors, will set the mood here at the end of a year in which the Japanese regained independence.

In fact a re-emergent Japan has already told Koreans, Filipinos and others that the future strength of the Orient must lie in a new and strong Japan, and it has in effect broken off relations because the Koreans and Filipinos fail to agree. Nevertheless, the mood of Government officials is one of doubt.

## SEOUL

"Snow and slush covered Korean cities and villages as the New Year approached the embattled peninsula. Korean Government officials prepared to move on Jan. 1 from the temporary capital at Pusan to Seoul, and mocked the Communist boast that the Chinese and North Korean forces would be in Seoul at New Year's.

But to the ordinary Korean, all this meant little. Their thoughts were of food—Koreans who would have a handful of polished rice for New Year's could count themselves lucky.

# At College Station Churches Sunday

**A&M Methodist Church**  
"This Year Also" is the sermon topic for Sunday at the A&M Methodist Church. The sermon will be delivered by the Rev. Nolan R. Vance at the worship service that begins at 10:55 a.m. Sunday.  
Sunday School will be taught at 9:45 a.m. The Wesley Foundation will meet at 6 p.m. and will be followed by the evening worship service at 7:30 p.m.

**A&M Christian Church**  
Services at the A&M Christian Church will be preceded by coffee time at 9:15 a.m. Sunday. Sunday School will begin at 9:45 a.m. and will be followed by the worship service at 11 a.m., DSF at 5 p.m., and a discussion group at 6:45 p.m.

**First Baptist Church**  
Sunday services at the First Baptist Church will begin with Sunday School at 9:45 a.m. Sunday and will be followed by morning worship at 10:50 a.m., Training Union at 6:15 p.m. and evening worship at 7:15 p.m.

**A&M Presbyterian Church**  
Services will begin with Church

School and will be followed by the worship service at 11 a.m., Presbyterian Student League at 6:30 p.m. and fellowship hour at 7:30 p.m.

**A&M Church of Christ**  
Services of the A&M Church of Christ will begin with Bible School at 9:45 a.m. Sunday and will be followed by the morning worship service at 10:45 a.m., young people's meeting at 6:15 p.m. and evening worship at 7:15 p.m.  
All services are being held in the YMCA Chapel except the Bible classes which are meeting in the regular class rooms at the church building. The Aggie class will also meet in the Chapel.

**Church of Jesus Christ of Latter Day Saints**  
The Sunday School of the Church of Jesus Christ of Latter Day Saints will be taught in the YMCA at 10:30 a.m. Sunday. The Sacrament Service will begin at 7:30 p.m. and will be followed by the Priesthood Meeting at 8:30 p.m.

**St. Thomas Episcopal Chapel**  
Sunday services at the St. Thomas Episcopal Chapel will begin

with Holy Communion at 8 a.m. and will be followed by Church School at 9:30 a.m. and Morning Prayer and sermon at 9:30 and 11 a.m.

**College Heights Assembly of God**  
Sunday School at the College Heights Assembly of God will begin at 9:45 a.m. Sunday and will be followed by the morning worship service at 11 a.m., Christ's Ambassadors at 6:45 p.m. and the evening worship at 7:45 p.m.

**Bethel Lutheran Church**  
Sunday School and Bible classes will be taught at 9:30 a.m. at the Bethel Lutheran Church and will be followed by the morning worship service at 10:45 a.m.

**Our Saviour's Lutheran Church**  
Church School with Bible classes will begin at 9:30 a.m. Sunday at Our Saviour's Lutheran Church. The morning worship service will begin at 10:45 a.m.

**Christian Science Services**  
Christian Science services will be held in the MSC at 11 a.m. Sunday.

**St. Mary's Catholic Chapel**  
Masses will be delivered at 8:30 and 10 a.m. Sunday and 6:45 a.m. Friday. Confessions will be heard from 6:30-7:30 p.m. Saturday.  
**Jewish Services**  
The Hillel Foundation will meet Friday night in the YMCA Chapel at 7:15 p.m. Friday.

## Hectic Year

(Continued from Page 3)  
It was a hectic year for the Southwest Conference, Texas Tech and University of Houston tried to get in but were turned down, not directly but through adoption of a rule that no school would be admitted to the conference unless invited.  
University of Texas dominated the year in conference sports, winning five of the nine championships. Football, baseball, swimming, golf and tennis went to the Longhorns; A&M won cross-country, track and fencing, and Texas Christian won basketball.

# The Church... For a Fuller Life... For You...

## CALENDAR OF CHURCH SERVICES

<b>A&amp;M CHURCH OF CHRIST</b> 9:45 A.M.—Bible Classes 10:45 A.M.—Morning Worship 6:15 P.M.—Youth Meeting	<b>A&amp;M CHRISTIAN CHURCH</b> 9:45 A.M.—Church School 11:00 A.M.—Morning Worship 5:00 P.M.—DSF
<b>ST. THOMAS EPISCOPAL CHURCH</b> 8:00 A.M.—Holy Communion 9:30 A.M.—Church School 11:00 A.M.—Morning Prayer and Sermon	<b>OUR SAVIOUR'S LUTHERAN CHURCH</b> 9:30 A.M.—Church School, Bible Classes 10:45 A.M.—Morning Worship
<b>COLLEGE STATION BAPTIST CHURCH</b> 9:45 A.M.—Sunday School 10:50 A.M.—Morning Worship 6:15 P.M.—Training Union 7:15 P.M.—Evening Worship	<b>ST. MARY'S CHAPEL</b> Masses at 9:30 and 10 a.m.
<b>BETHEL LUTHERAN CHURCH (Missouri Synod)</b> 800 S. College Ave. Bryan, Texas 9:30 A.M.—Sunday School and Bible Classes 10:45 A.M.—Morning Worship	<b>A&amp;M PRESBYTERIAN CHURCH</b> 9:45 A.M.—Sunday School 11:00 A.M.—Morning Worship Service 6:30 P.M.—Student League and Fellowship
<b>COLLEGE HEIGHTS ASSEMBLY OF GOD</b> 9:45 A.M.—Sunday School 11:00 A.M.—Morning Worship 7:00 P.M.—Young Peoples Service 8:00 P.M.—Evening Worship	<b>CHRISTIAN SCIENCE SOCIETY YMCA Chapel</b> 11:00 A.M.—Morning Worship <b>A&amp;M METHODIST CHURCH</b> 9:45 A.M.—Sunday School 10:55 A.M.—Morning Worship 6:00 P.M.—Wesley Foundation <b>HILLEL FOUNDATION</b> 7:30 P.M.—Friday night.



Bags of money! Stacks of silver, nickel and copper coins! Neatly-bound packages of crisp new currency! This is a common sight in the vaults of banks and the financial institutions of the world.

Money plays a big part in life. It represents human labor and material production and is the medium through which man exchanges his toil for food and other necessities and comforts of life.

It is important to know how to handle money wisely and well. Some people squander it to their sorrow; others worship it as their supreme aim in life. These attitudes are both unsound and dangerous.

Worship should be reserved for God alone, and right living should be the supreme aim of one's life. Money is a useful instrument in the material world, but it is secondary to man's spiritual welfare.

The Bible teaches us to be diligent and thrifty; it also teaches us to love God and cherish our religious faith above all the world's wealth and glory.

**THE CHURCH FOR ALL . . . ALL FOR THE CHURCH**

The Church is the greatest factor on earth for the building of character and good citizenship. It is a storehouse of spiritual values. Without a strong Church, neither democracy nor civilization can survive. There are four sound reasons why every person should attend services regularly and support the Church. They are: (1) For his own sake. (2) For his children's sake. (3) For the sake of his community and nation. (4) For the sake of the Church itself, which needs his moral and material support. Plan to go to church regularly and read your Bible daily.

Sunday . . . Luke 22:1-6  
Monday . . . I Timothy 6:6-11  
Tuesday . . . Acts 2:1-5  
Wednesday . . . Mark 12:41-44  
Thursday . . . Isaiah 55:1-3  
Friday . . . Matthew 25:14-30  
Saturday . . . Psalms 15:1-5

For schedule of yearly readings, write American Bible Society, 450 Park Ave., N. Y. 22, N. Y.

Copyright 1949, E. E. Kelster, Strasburg, Va.

**Battalion Classifieds**

**BUY, SELL, RENT OR TRADE.** Rates . . . 3c a word per insertion with a 10c minimum. Space rate in classified section . . . 60c per column-inch. Send all classified to **STUDENT ACTIVITIES OFFICE.** All ads must be received in Student Activities office by 10 a.m. on the day before publication.

**WANTED**  
A HAPPY NEW YEAR for all Battalion Readers.

**FOR SALE**  
GIVE A puppy for Christmas! Clean, comfortable boarding facilities (thermostatically gas-heated quarters for house dogs). Trimming, bathing, nail clipping, whelping, stud dogs. Dog food, supplies, crate rental. Open Sundays. Friendly economical. **THE BAYARD KENNELS,** On Highway 6 south of College.

**WORK WANTED**  
TYPING—reasonable rates. Phone 3-1778 after 5.

**PERSONAL**  
BAH. Humbug — Ebenezer Scrooge.

**HELP WANTED**  
TECHNICIAN for office work. Call 4-9882.

**Directory of Business Services**  
INSURANCE of all kinds. Homer Adams, North Gate. Call 4-1217.

**Dr. Carlton R. Lee**  
OPTOMETRIST  
803A East 26th  
(Across from Court House)  
Call 2-1662 for Appointment

**Dr. M. W. Deason**  
Optometrist  
NORTH GATE  
813 COLLEGE MAIN  
8:00 to 5:00 Phone 4-1106

**Prompt Radio Service**  
—Call—  
**Sosolik's Radio Service**  
712 S. Main St.  
Ph. 2-1941 Bryan

**City National Bank**  
Member Federal Deposit Insurance Corporation  
BRYAN

**American Laundry Dry Cleaners**  
AND  
SERVING TEXAS AGGIES  
BRYAN

**The Exchange Store**  
SERVING TEXAS AGGIES

College Station's Own Banking Service  
**College Station State Bank**  
NORTH GATE

**Central Texas Hardware Co.**  
BRYAN  
• HARDWARE  
• CHINAWARE  
• CRYSTAL  
• GIFTS

Bryan Communities Since 1909  
**First State Bank & Trust Co.**  
Member Federal Deposit Insurance Corporation  
BRYAN

**LAUNDROMAT**  
HALF-HOUR LAUNDRY & CLEANERS  
Authorized Dealer Hamilton (Home) Dryer  
One Block East of College View Apts.  
COLLEGE STATION

**Henry A. Miller & Company**  
Phone 4-1145  
HARDWARE FASHIONS TEEN-TOT

**Lilly**  
Lilly Ice Cream Co. Bryan  
MELLO CREAM  
"A Nutritious Food"