

Battalion Editorials

Page 2

THE BATTALION

TUESDAY, DECEMBER 23, 1952

The True Spirit Of Christmas: Hope

A GAIN . . . IT IS CHRISTMAS and over the far-flung places of the Earth, hearts and minds as one, search for the sign of awakening, a rebirth of the symbol of Peace on Earth . . . Good Will to Men.

Across strange lands, mute crosses stand to mark man's greater love for freedom than for life.

Guns speak . . . yet do not drown the hopes, the aspirations, the glory of the brotherhood of man.

This year, of all years, let the true spirit of Christmas bring us hope. That men may return to sanity, mercy, love, duty, forbearance. That through the faith and courage of our people . . . the spirit of Christmas shall ever live . . . to guide the destinies of men.

Can You Keep Christmas?

ARE YOU WILLING to forget what you have done for other people, and to remember what other people have done for you; to ignore what the world owes you, and to think what you owe the world; to put your rights in the background, and your duties in the middle distance and your chances to do a little more than your duty in the foreground; to see that your fellowmen are just as real as you are, and try to look behind their faces to their hearts, hungry for joy; to own that probably the only reason for your existence is not what you are going to

The First Christmas Night

The dark hill crouched 'round Bethlehem, Like hooded monks at prayer, Slept on in timeless peace, nor saw A new star shining there.

But shepherds drowsing near their flocks Looked up with startled eyes, And saw the winged Heavenly Host Spread glory through the skies.

The village in the valley slept, Save where one small, dim light Shone from a lowly stable, where A child was born that night.

The mother held her first-born close, And breathed a mother's prayer; She did not see the shadow Of a cross above them there.

Nor did she know the child she held So close against her breast, Would bring to earth good will and peace, And to the weary rest.

—Mabel Clare Thomas

The Christmas poem above was written by Mrs. F. L. Thomas of 1309 Walton. Mrs. Thomas' poetry has been published in the Saturday Evening Post and other magazines. Two years ago she won a prize for the best lyric poem submitted to the Southwest Writer's Conference. Another of her poems, "Posthumous Award", is in this week's National Churchman magazine.

get out of life, but what you are going to give to life; to close your book of complaints against management of the universe, and look around you for a place where you can sow a few seeds of happiness—are you willing to do these things even for a day? Then you can keep Christmas.

—Henry Van Dyke.

At College Station Churches

Most of the College Station churches are planning special Christmas and New Year's Day services.

Masses will be given on Christmas Day and New Year's Day at 9 a.m. at St. Mary's Catholic Chapel. Mass will be said at 9 a.m. Sunday Dec. 28 and Jan. 4. Confessions will be heard before masses.

Our Saviour's Lutheran Church
A candlelight vesper service will be held in Our Saviour's Lutheran Church on Christmas Eve at 7:30 p.m. A candle lighting vesper service will be held at 7:30 p.m. New Year's Eve.

Bethel Lutheran Church
A program and song service will be presented by the children of the Bethel Lutheran Church at 7 p.m. Christmas Eve. The Christmas Day worship service will begin at 10:45 a.m. Special communion service will be held at 7:30 p.m. New Year's Eve.

College Heights Assembly of God
Sunday services at the College Heights Assembly of God will not be changed during the holidays. Wednesday evening services have been cancelled.
Sunday School will meet at 9:45 a.m. and will be followed by the

morning worship service at 11 a.m. Christ's Ambassadors at 6:45 p.m. and the evening worship service at 7:45 p.m.

Christian Science Service
Christian Science services will not be held Dec. 28 because the MSC will be closed.

St. Thomas Episcopal Chapel
The Christmas midnight service at St. Thomas Episcopal Chapel will begin at 11:30 p.m. Wednesday. Services will include carols, Holy Communion and sermon. Holy Communion and sermon will begin at 10 a.m. Christmas day.

First Baptist Church
Services at the First Baptist Church will begin with Sunday School at 9:45 a.m. Sunday. Other services include the worship service at 10:50 a.m., Training Union at 6:15 p.m. and the evening worship at 7:15 p.m. Evening worship service will be conducted by students who are home from college.

Church of Jesus Christ of Latter Day Saints
Sunday School of the Church of Jesus Christ of Latter Day Saints will be held in the YMCA at 10:30 a.m. Sunday. No evening services will be held.

A&M Church of Christ
Services of the A&M Church of Christ will be held in the YMCA Chapel. Church School will be taught in the regular classrooms.

Bible School will be taught at 9:45 a.m. Morning worship will begin at 10:45 a.m. Young People's Meeting will meet at 6:15 p.m. Evening worship will begin at 7:15 p.m.

A&M Christian Church
Sunday School at A&M Christian Church will be taught at 9:45 a.m. Sunday. Worship service will begin at 11 a.m.

A&M Methodist Church
Sunday Services at the A&M Methodist Church will begin with Sunday School at 9:45 a.m. and will be followed by the worship service at 10:55 a.m. Evening worship will begin at 7:30 p.m.

A&M Presbyterian Church
Church School at the A & M Presbyterian Church will be taught at 9:45 a.m. Sunday. The worship service will begin at 11 a.m.

Jewish Services
The Hillel Foundation will not meet during the holidays. A special meeting will be held Tuesday, Jan. 6 in the YMCA Cabinet Room. The regular service will be held in the MSC Wednesday, Jan. 7.

The Battalion

Lawrence Sullivan Ross, Founder of Aggie Traditions
"Soldier, Statesman, Knightly Gentleman"

The Battalion, official newspaper of the Agricultural and Mechanical College of Texas, is published by students four times a week, during the regular school year. During the summer terms, and examination and vacation periods, The Battalion is published twice a week. Days of publication are Tuesday through Friday for the regular school year, and Tuesday and Thursday during examination and vacation periods and the summer term. Subscription rates \$6.00 per year or \$5.00 per month. Advertising rates furnished on request.

Entered as second-class matter at Post Office at College Station, Texas under the Act of Congress of March 3, 1879.

Member of
The Associated Press

Represented nationally by National Advertising Services, Inc., at New York City, Chicago, Los Angeles, and San Francisco.

The Associated Press is entitled exclusively to the use for republication of all news dispatches credited to it or not otherwise credited in the paper and local news of spontaneous origin published herein. Rights of republication of all other matter herein are also reserved.

News contributions may be made by telephone (4-5444 or 4-7604) or at the editorial office room, 202 Goodwin Hall. Classified ads may be placed by telephone (4-5324) or at the Student Activities Office, Room 209 Goodwin Hall.

FRANK N. MANITZAS, JOEL AUSTIN
Ed Holder
Harri Baker
Pagzy Maddox

Co-Editors
Sports Editor
City Editor
Women's News Editor

Today's Issue

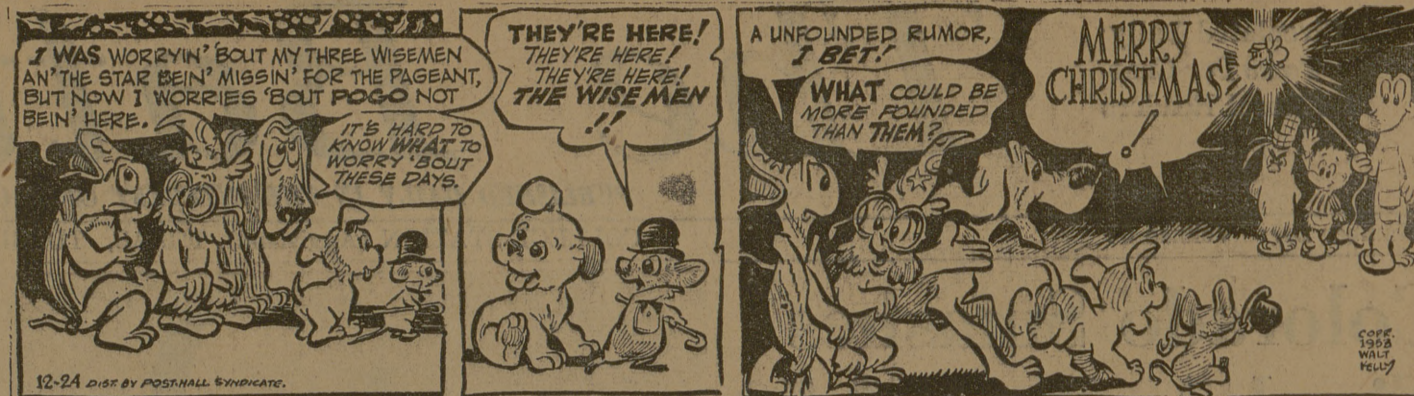
Harri Baker News Editor
Bob Selleck Sports Editor
Bob Boriskie Assistant Sports Editor

Jerry Bennett, Bob Hendry, Joe Hipp, Chuck Neighbors, Bob Selleck, News Editors
Gus Becker, Associate Sports Editor
Vernon Anderson, Bob Boriskie, William Buckley, Arnold Damon, Robert Doney, Allen Hays, Joe Hladak, Bill Foley, Ed Fries, Raymond Gossett, Carl Hale, Joe Kinslow, H. M. Krausert, Jim Larkin, Steve Lilly, Kenneth Livingston, Clay McFarland, Dick Moore, Tom Paul Reynolds, John Moody, Bob Falger, Bill Shepard, and Tommy Short, Staff News Writers
Joe B. Matzel, Editorial Writer

Jerry Wizig, Jerry Neighbors, Hugh Phillipus, Gerald Estes, Sports News Writers
Jerry Bennett, Bob Hendry, Amusements
Jon Kinslow, Ed Fries, City News Editors
William Davis, Circulation Manager
Gene Ridell, Perry Shepard, Advertising Representatives
Bob Godfrey, Photo Engraving Shop Manager
Bob Selleck, Leon Boettcher, Photo-Engravers
Keith Nickle, Roddy Peoples, Staff Photographers
Gardner Collins, File Clerk
Theilton McCordie, Staff Cartoonist

POGO

By Walt Kelly



LPL ABNER

Letter From A Stranger

By Al Capp



The Church... For a Fuller Life... For You...

CALENDAR OF CHURCH SERVICES

A&M CHURCH OF CHRIST
9:45 A.M.—Bible Classes
10:45 A.M.—Morning Worship
6:15 P.M.—Youth Meeting

ST. THOMAS EPISCOPAL CHURCH
8:00 A.M.—Holy Communion
9:30 A.M.—Church School
11:00 A.M.—Morning Prayer and Sermon

COLLEGE STATION BAPTIST CHURCH
9:45 A.M.—Sunday School
10:50 A.M.—Morning Worship
6:15 P.M.—Training Union
7:15 P.M.—Evening Worship

BETHEL LUTHERAN CHURCH
(Missouri Synod)
800 S. College Ave. Bryan, Texas
9:30 A.M.—Sunday School and Bible Classes
10:45 A.M.—Morning Worship

COLLEGE HEIGHTS ASSEMBLY OF GOD
9:45 A.M.—Sunday School
11:00 A.M.—Morning Worship
7:00 P.M.—Young Peoples Service
8:00 P.M.—Evening Worship

A&M CHRISTIAN CHURCH
9:45 A.M.—Church School
11:00 A.M.—Morning Worship
5:00 P.M.—DSF

OUR SAVIOUR'S LUTHERAN CHURCH
9:30 A.M.—Church School, Bible Classes
10:45 A.M.—Morning Worship

ST. MARY'S CHAPEL
Masses at 9:30 and 10 a.m.

A&M PRESBYTERIAN CHURCH
9:45 A.M.—Sunday School
11:00 A.M.—Morning Worship Service
6:30 P.M.—Student League and Fellowship

CHRISTIAN SCIENCE SOCIETY
YMCA Chapel
11:00 A.M.—Morning Worship

A&M METHODIST CHURCH
9:45 A.M.—Sunday School
10:55 A.M.—Morning Worship
6:00 P.M.—Wesley Foundation

HILLEL FOUNDATION
7:30 P.M.—Friday night.

College Station's Own

Banking Service

College Station

State Bank

NORTH GATE

Central Texas
Hardware Co.

BRYAN

- HARDWARE
- CHINAWARE
- CRYSTAL
- GIFTS

Bryan Communities Since 1909

First State Bank
& Trust Co.

Member Federal Deposit
Insurance Corporation
BRYAN

LAUNDROMAT

HALF-HOUR LAUNDRY
& CLEANERS

Authorized Dealer Hamilton

(Home) Dryer

One Block East of College View Apts.

COLLEGE STATION



Henry A. Miller
& Company

Phone 4-1145

HARDWARE
FASHIONS
TEEN-TOT

City National
Bank

Member
Federal Deposit
Insurance Corporation
BRYAN

American
Laundry

AND
Dry Cleaners
BRYAN

The
Exchange
Store

SERVING
TEXAS AGGIES

Lilly

Lilly Ice Cream Co. Bryan

MELLO CREAM
"A Nutritious Food"