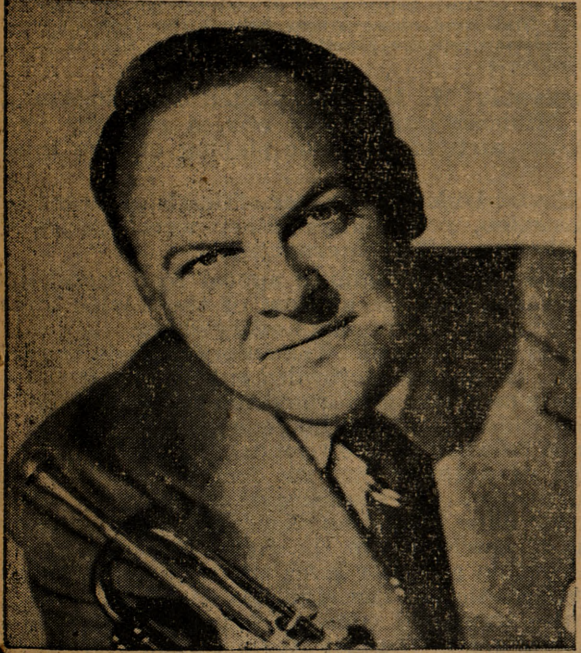


The Battalion



BANDLEADER—Billy May will lead his "big band" in a concert and all-college dance Saturday night.



VOCALIST—Carole Simpson will add vocals to May's "fresh approach" in dance music at Guion and Sbis Hall.

Rue Pinalle Starts 'May' Weekend

The "fresh approach" of Billy May and his orchestra will highlight the football weekend starting Friday night with songs by Carmen Hines in the MSC's Cafe day night. Friday night songs by Rue Pinalle start the weekend. May's orchestra will demonstrate why it is one of the nation's top dance bands at an all college dance in Sbis Dining Hall following an hour's concert in Guion Hall.

Chest Drive Short by More Than \$6,000

"I don't expect the Community Chest to make more than \$7,500 when the complete reports are turned in this week", said Bennie Zinn, chairman of the Chest committee. Only \$4,400.53 had been turned in through Thursday. The goal for this year was set at \$11,019. The drive will be extended through Wednesday, according to Zinn. He plans to canvass college departments and areas of the city that have fallen below the average contribution per person this year. The Chest Committee will meet Thursday, Nov. 20, to check the complete reports and vote on whether or not to continue the drive.

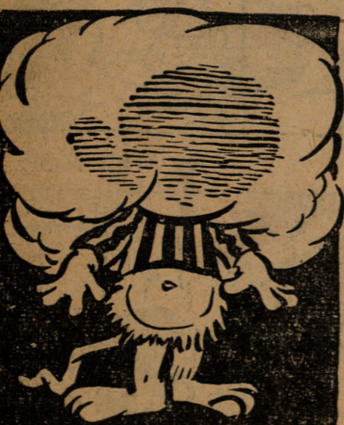
Eleven Sign For Freshmen Posts Tuesday

Eleven students filed yesterday for freshman class offices bringing the total number of filings to 30. Donald Joe Diersehke, William Leroy Campbell, and Weldon Walker filed for president and Herbert W. (Bud) Whitney, and Tom R. Turner are running for vice president. Robert C. Barlow filed for secretary.

Buffet Dinner Set In MSC Saturday

A buffet dinner will be held in the Assembly Room of the MSC Saturday from 11:30 a. m. to 1:30 p. m., for anyone who is interested, said Miss Gladys Black. Tickets will cost \$1.50 each.

Weather Today



PARTLY CLOUDY

WEATHER TODAY: Clear to partly cloudy. The maximum expected today will be in the lower 70's and the minimum expected in the morning will be in the middle 50's.

Ambassador From Korea Speaks Here

Dr. You Chan Yang, ambassador to the United States from the Republic of Korea, will speak on the Korean crisis at 7:15 p. m. Monday in the MSC Ballroom.

Dr. Yang is flying to Texas to deliver two speeches, direct from UN headquarters in New York City. His first speech will be here Monday night, the second will be in Houston, Tuesday evening.

He has been at the General Assembly since that organization opened its new session and moved into their modern headquarters.

The doctor has dedicated his life to driving aggressors from the last square foot of Korean soil, said Lamar McNew, MSC Council president. The speech is sponsored by the MSC council and drectorate.

Dr. Yang believes the Korean conflict is an excellent test for the UN, there can be no compromise, and he does not mince words, McNew added.

The ambassador was a noted physician and surgeon until he began his diplomatic career. He is thoroughly Americanized; he went to school in Hawaii, and Boston University.

He was in private practice in Honolulu when called into diplomatic service by his country.

The doctor was born in Pusan, Korea, but was taken to Hawaii when young, to escape Japanese domination.

College Station Community Chest

| | |
|-------------------|-------------|
| Goal | \$11,019.00 |
| Total now | 4,400.53 |
| Still needed | 6,618.47 |
| Extended deadline | Nov. 19 |

Student guest tickets go off sale at 5 p. m. today. No definite deadline has been set for the sale of student tickets for the University of Texas game, but they will probably go off sale Thursday, Nov. 20, he said.

All reserve tickets to the Texas game have been sold, but if all of the tickets allotted to A&M are not sold, another reserve seat section may be opened and those tickets used, he said. A capacity crowd is expected at the Thanksgiving Day game in Austin.

Bonfire Construction Plans Now Underway

Plans are underway for the building of the annual bonfire prior to the Turkey Day battle between A&M and Texas, according to Tom Collins, head yell leader and chairman of the bonfire committee.

The actual construction of the mass of wood will start next Sunday. Wood will be cleared from land near here, located four miles east on highway 6.

Route Marked
"The route to the wood area will be marked so it will be easy to find," said Collins.

Collins estimated that they would need 36 axes, 78 extra handles, 20 dozen wedges, four pounds staples, four cross-cut saws and two extra handles.

All gasoline will be purchased from the service station that donates crude oil to soak the wood

Rice Plans Win No. 8; Seniors Table 'Issue' Will Meet Monday To Vote on 'Board'

By JOEL AUSTIN
Battalion Co-Editor

The senior class tabled a motion last night to do away with the "board" as a means of physical hazing. They will vote again at a special called meeting Monday at 5 p. m. Class members agreed 94-65 to table the motion until all seniors could be notified of this vote to be taken. Those favoring to table the motion felt all seniors should have an opportunity to express their opinion on the matter.

Physical hazing and use of a board is against college regulations and state laws, but has been evidenced through physical inspections held by college officials. The board has been used in defiance of existing laws and regulations.

The seniors said if they stand as a group and eliminate use of the board, college authorities should be more considerate in granting certain demands already presented through a grievance committee.

Presented by O. C. (Putter) Jarvis, the motion read as follows:

"We, the senior class, see the problems of the administration, especially hazing, which is deemed unlawful by the constitution of the state of Texas. We agree, as a body, to suspend the use of the board in the Corps of Cadets because it is unlawful. And if this agreement is ever violated a committee composed of cadets in the corps, appointed by the president of the senior class, will make out positive and strict disciplinary measures immediately and justly to the violator. This program will function continuously through each succeeding class.

"Now the class of 1953 has seen the problems of the Texas A&M College and has acted upon them. We respectfully submit a report of the problems of the Corps of Cadets and hope the board of directors and the college administrators will follow the suggestions (See SENIORS, Page 3)

Twelve A&M administrators were entertained Tuesday at a reception in Washington, D. C. given by Rep. Olin E. Teague of College Station.

The A&M leaders are attending the annual meeting of the Association of Land Grant Colleges and Universities.

President of the College M. T. Harrington returned late last night. All Texas congressmen now in Washington attended.

Dr. Milton E. Eisenhower, president of Pennsylvania State College and brother of President-Elect Dwight D. Eisenhower, is president of the national association. In his opening address to the association Tuesday, he challenged the nation's schools to aid in winning the free world's fight against Communism by "teaching principles of international understanding, political and economic co-operation and maintenance of power prepared to meet aggression."

Teague held the reception for the A&M officials on Capitol Hill. Honored were President Harrington; D. H. Morgan, dean of the college; Ide P. Trotter, dean of the Graduate School; J. P. Abbott, dean of the School of Arts and Sciences; Charles N. Shepardson, dean of the School of Agriculture; F. P. Jaggi, acting dean of the School of Veterinary Medicine; H. W. Barlow, dean of the School of Engineering and director of the Texas Engineering Experiment Station.

Reception At Capitol
Teague held the reception for the A&M officials on Capitol Hill. Honored were President Harrington; D. H. Morgan, dean of the college; Ide P. Trotter, dean of the Graduate School; J. P. Abbott, dean of the School of Arts and Sciences; Charles N. Shepardson, dean of the School of Agriculture; F. P. Jaggi, acting dean of the School of Veterinary Medicine; H. W. Barlow, dean of the School of Engineering and director of the Texas Engineering Experiment Station.

Only 171 students paid their fees for the civilian dining hall which opened yesterday in Sbis Hall, the fiscal office said today. This is 29 short of the 200 goal needed to keep the system going, the office added.

Cost of meals paid for separately is breakfast 50 cents, lunch 75 cents, dinner 90 cents. Under the new system, meals for Nov. 13-26 and Dec. 1-18 inclusive are 42.25, which averages slightly over 44 cents for meal.

Ernest Langford, head of the architecture department and mayor of the city of College Station, has been named chairman of the committee. The first meeting of the Citizens Advisory Committee will be held 7:30 p. m. Monday, Dec. 8, Ware said.

Ernest Langford, head of the architecture department and mayor of the city of College Station, has been named chairman of the committee. The first meeting of the Citizens Advisory Committee will be held 7:30 p. m. Monday, Dec. 8, Ware said.

Ernest Langford, head of the architecture department and mayor of the city of College Station, has been named chairman of the committee. The first meeting of the Citizens Advisory Committee will be held 7:30 p. m. Monday, Dec. 8, Ware said.

Ernest Langford, head of the architecture department and mayor of the city of College Station, has been named chairman of the committee. The first meeting of the Citizens Advisory Committee will be held 7:30 p. m. Monday, Dec. 8, Ware said.

Ernest Langford, head of the architecture department and mayor of the city of College Station, has been named chairman of the committee. The first meeting of the Citizens Advisory Committee will be held 7:30 p. m. Monday, Dec. 8, Ware said.

Ernest Langford, head of the architecture department and mayor of the city of College Station, has been named chairman of the committee. The first meeting of the Citizens Advisory Committee will be held 7:30 p. m. Monday, Dec. 8, Ware said.

Ernest Langford, head of the architecture department and mayor of the city of College Station, has been named chairman of the committee. The first meeting of the Citizens Advisory Committee will be held 7:30 p. m. Monday, Dec. 8, Ware said.

Ernest Langford, head of the architecture department and mayor of the city of College Station, has been named chairman of the committee. The first meeting of the Citizens Advisory Committee will be held 7:30 p. m. Monday, Dec. 8, Ware said.

By ED HOLDER
Sports Editor

Coach Ray George of the Aggies has often said he could hardly afford to lose Ray Graves, quarterback of the Cadets and total offensive leader in the SWC.

It looks like George and his squad will have to do without the services of the speedy man-under when they play their last home game of the 1952 season tomorrow on Kyle Field against the Rice Owls.

Rice has started a come-back after defeating Arkansas 35-33, and will be trying to take another big step up the SWC ladder with a win over the Farmers. The Owls will also be trying to defeat the Cadets for the eighth straight time, since A&M last win over the Houston club came in 1944.

Halftime activity for the game will be the honoring of all Aggies who have made the trip to the Olympic games. Twenty-five thousand fans will watch Darrow Hooper, Buddy Davis, Jack Mahan, and Art Harnden take their bows for accomplishments in outstanding track performances.

Roy Dollar, who has been doing the punting for the Maroon and White, will be the most likely man to take over if Graves can't go against Rice. Dollar ran quarterback last week against when the cadet's first string quarterback received a hip injury early in the third period.

Don Ellis is another possibility to fill in for the injured Graves. Ellis has been running halfback during the year, but Coach George might call on him to run the Split-T and Straight-T formation for the Aggies.

Either May Go
Both men have been working out this week at the position, and either may get the nod to jump into the shoes of the SWC's leading quarterback.

Dollar will be playing his last home game for A&M, as will Graves if he gets into the game. Other graduating seniors who will step onto Kyle Field in the Maroon and White uniform for the last time will be All-American Jack Little, defensive tackle, Raymond Haas, halfback, and Al Langford, another tackle.

Marshall Rush, who has turned in some of the finest defensive work of the year will join the group. Bobby Dixon, offensive tackle for the Cadets will also be out to win his last home tilt.

Others who are graduating this year are Don Moore, W. G. (Ox) (See OLYMPIC, Page 3)

Barlow to Speak At ASEE Meeting

Dr. H. W. Barlow, dean of engineering, will be the main speaker to the American Society for Engineering Education Thursday in the civil engineering lecture room. His subject is "Why You Should Belong to ASEE."

Prof. A. R. Burgess, head of the industrial engineering department, will discuss new ideas in industrial engineering. Professional ethics is the topic scheduled for R. L. Peurifoy, professor of civil engineering, and Dr. W. S. Street, head of the engineering drawing department, will speak on "The Place of Graphics in Modern Engineering."

These speakers and Professor Norman F. Rode of the electrical engineering department, who is the chairman of the local branch of ASEE, represented A&M at the national convention of the society last June and will present ideas noted at that meeting.

Other officers of the local ASEE are Professor B. F. K. Mullins of the engineering drawing department, vice-chairman; and Prof. E. S. Holdrege of the mechanical engineering department, secretary-treasurer.

Other officers of the local ASEE are Professor B. F. K. Mullins of the engineering drawing department, vice-chairman; and Prof. E. S. Holdrege of the mechanical engineering department, secretary-treasurer.

Other officers of the local ASEE are Professor B. F. K. Mullins of the engineering drawing department, vice-chairman; and Prof. E. S. Holdrege of the mechanical engineering department, secretary-treasurer.

Other officers of the local ASEE are Professor B. F. K. Mullins of the engineering drawing department, vice-chairman; and Prof. E. S. Holdrege of the mechanical engineering department, secretary-treasurer.

Other officers of the local ASEE are Professor B. F. K. Mullins of the engineering drawing department, vice-chairman; and Prof. E. S. Holdrege of the mechanical engineering department, secretary-treasurer.

Other officers of the local ASEE are Professor B. F. K. Mullins of the engineering drawing department, vice-chairman; and Prof. E. S. Holdrege of the mechanical engineering department, secretary-treasurer.

Other officers of the local ASEE are Professor B. F. K. Mullins of the engineering drawing department, vice-chairman; and Prof. E. S. Holdrege of the mechanical engineering department, secretary-treasurer.

Other officers of the local ASEE are Professor B. F. K. Mullins of the engineering drawing department, vice-chairman; and Prof. E. S. Holdrege of the mechanical engineering department, secretary-treasurer.

Other officers of the local ASEE are Professor B. F. K. Mullins of the engineering drawing department, vice-chairman; and Prof. E. S. Holdrege of the mechanical engineering department, secretary-treasurer.

Other officers of the local ASEE are Professor B. F. K. Mullins of the engineering drawing department, vice-chairman; and Prof. E. S. Holdrege of the mechanical engineering department, secretary-treasurer.

Other officers of the local ASEE are Professor B. F. K. Mullins of the engineering drawing department, vice-chairman; and Prof. E. S. Holdrege of the mechanical engineering department, secretary-treasurer.

Other officers of the local ASEE are Professor B. F. K. Mullins of the engineering drawing department, vice-chairman; and Prof. E. S. Holdrege of the mechanical engineering department, secretary-treasurer.

Other officers of the local ASEE are Professor B. F. K. Mullins of the engineering drawing department, vice-chairman; and Prof. E. S. Holdrege of the mechanical engineering department, secretary-treasurer.

Other officers of the local ASEE are Professor B. F. K. Mullins of the engineering drawing department, vice-chairman; and Prof. E. S. Holdrege of the mechanical engineering department, secretary-treasurer.

Other officers of the local ASEE are Professor B. F. K. Mullins of the engineering drawing department, vice-chairman; and Prof. E. S. Holdrege of the mechanical engineering department, secretary-treasurer.

Other officers of the local ASEE are Professor B. F. K. Mullins of the engineering drawing department, vice-chairman; and Prof. E. S. Holdrege of the mechanical engineering department, secretary-treasurer.

Other officers of the local ASEE are Professor B. F. K. Mullins of the engineering drawing department, vice-chairman; and Prof. E. S. Holdrege of the mechanical engineering department, secretary-treasurer.

Other officers of the local ASEE are Professor B. F. K. Mullins of the engineering drawing department, vice-chairman; and Prof. E. S. Holdrege of the mechanical engineering department, secretary-treasurer.

Other officers of the local ASEE are Professor B. F. K. Mullins of the engineering drawing department, vice-chairman; and Prof. E. S. Holdrege of the mechanical engineering department, secretary-treasurer.

Other officers of the local ASEE are Professor B. F. K. Mullins of the engineering drawing department, vice-chairman; and Prof. E. S. Holdrege of the mechanical engineering department, secretary-treasurer.

Other officers of the local ASEE are Professor B. F. K. Mullins of the engineering drawing department, vice-chairman; and Prof. E. S. Holdrege of the mechanical engineering department, secretary-treasurer.

Other officers of the local ASEE are Professor B. F. K. Mullins of the engineering drawing department, vice-chairman; and Prof. E. S. Holdrege of the mechanical engineering department, secretary-treasurer.

Other officers of the local ASEE are Professor B. F. K. Mullins of the engineering drawing department, vice-chairman; and Prof. E. S. Holdrege of the mechanical engineering department, secretary-treasurer.

Other officers of the local ASEE are Professor B. F. K. Mullins of the engineering drawing department, vice-chairman; and Prof. E. S. Holdrege of the mechanical engineering department, secretary-treasurer.

Other officers of the local ASEE are Professor B. F. K. Mullins of the engineering drawing department, vice-chairman; and Prof. E. S. Holdrege of the mechanical engineering department, secretary-treasurer.

Other officers of the local ASEE are Professor B. F. K. Mullins of the engineering drawing department, vice-chairman; and Prof. E. S. Holdrege of the mechanical engineering department, secretary-treasurer.

Other officers of the local ASEE are Professor B. F. K. Mullins of the engineering drawing department, vice-chairman; and Prof. E. S. Holdrege of the mechanical engineering department, secretary-treasurer.

Other officers of the local ASEE are Professor B. F. K. Mullins of the engineering drawing department, vice-chairman; and Prof. E. S. Holdrege of the mechanical engineering department, secretary-treasurer.

Other officers of the local ASEE are Professor B. F. K. Mullins of the engineering drawing department, vice-chairman; and Prof. E. S. Holdrege of the mechanical engineering department, secretary-treasurer.

Other officers of the local ASEE are Professor B. F. K. Mullins of the engineering drawing department, vice-chairman; and Prof. E. S. Holdrege of the mechanical engineering department, secretary-treasurer.

Other officers of the local ASEE are Professor B. F. K. Mullins of the engineering drawing department, vice-chairman; and Prof. E. S. Holdrege of the mechanical engineering department, secretary-treasurer.

Other officers of the local ASEE are Professor B. F. K. Mullins of the engineering drawing department, vice-chairman; and Prof. E. S. Holdrege of the mechanical engineering department, secretary-treasurer.

Other officers of the local ASEE are Professor B. F. K. Mullins of the engineering drawing department, vice-chairman; and Prof. E. S. Holdrege of the mechanical engineering department, secretary-treasurer.

Other officers of the local ASEE are Professor B. F. K. Mullins of the engineering drawing department, vice-chairman; and Prof. E. S. Holdrege of the mechanical engineering department, secretary-treasurer.

Other officers of the local ASEE are Professor B. F. K. Mullins of the engineering drawing department, vice-chairman; and Prof. E. S. Holdrege of the mechanical engineering department, secretary-treasurer.

Other officers of the local ASEE are Professor B. F. K. Mullins of the engineering drawing department, vice-chairman; and Prof. E. S. Holdrege of the mechanical engineering department, secretary-treasurer.

Other officers of the local ASEE are Professor B. F. K. Mullins of the engineering drawing department, vice-chairman; and Prof. E. S. Holdrege of the mechanical engineering department, secretary-treasurer.

Other officers of the local ASEE are Professor B. F. K. Mullins of the engineering drawing department, vice-chairman; and Prof. E. S. Holdrege of the mechanical engineering department, secretary-treasurer.

Other officers of the local ASEE are Professor B. F. K. Mullins of the engineering drawing department, vice-chairman; and Prof. E. S. Holdrege of the mechanical engineering department, secretary-treasurer.

Other officers of the local ASEE are Professor B. F. K. Mullins of the engineering drawing department, vice-chairman; and Prof. E. S. Holdrege of the mechanical engineering department, secretary-treasurer.

Other officers of the local ASEE are Professor B. F. K. Mullins of the engineering drawing department, vice-chairman; and Prof. E. S. Holdrege of the mechanical engineering department, secretary-treasurer.

Other officers of the local ASEE are Professor B. F. K. Mullins of the engineering drawing department, vice-chairman; and Prof. E. S. Holdrege of the mechanical engineering department, secretary-treasurer.

Other officers of the local ASEE are Professor B. F. K. Mullins of the engineering drawing department, vice-chairman; and Prof. E. S. Holdrege of the mechanical engineering department, secretary-treasurer.

Other officers of the local ASEE are Professor B. F. K. Mullins of the engineering drawing department, vice-chairman; and Prof. E. S. Holdrege of the mechanical engineering department, secretary-treasurer.

Other officers of the local ASEE are Professor B. F. K. Mullins of the engineering drawing department, vice-chairman; and Prof. E. S. Holdrege of the mechanical engineering department, secretary-treasurer.

Other officers of the local ASEE are Professor B. F. K. Mullins of the engineering drawing department, vice-chairman; and Prof. E. S. Holdrege of the mechanical engineering department, secretary-treasurer.

Other officers of the local ASEE are Professor B. F. K. Mullins of the engineering drawing department, vice-chairman; and Prof. E. S. Holdrege of the mechanical engineering department, secretary-treasurer.

Other officers of the local ASEE are Professor B. F. K. Mullins of the engineering drawing department, vice-chairman; and Prof. E. S. Holdrege of the mechanical engineering department, secretary-treasurer.

Other officers of the local ASEE are Professor B. F. K. Mullins of the engineering drawing department, vice-chairman; and Prof. E. S. Holdrege of the mechanical engineering department, secretary-treasurer.

Other officers of the local ASEE are Professor B. F. K. Mullins of the engineering drawing department, vice-chairman; and Prof. E. S. Holdrege of the mechanical engineering department, secretary-treasurer.

Other officers of the local ASEE are Professor B. F. K. Mullins of the engineering drawing department, vice-chairman; and Prof. E. S. Holdrege of the mechanical engineering department, secretary-treasurer.

Other officers of the local ASEE are Professor B. F. K. Mullins of the engineering drawing department, vice-chairman; and Prof. E. S. Holdrege of the mechanical engineering department, secretary-treasurer.

Other officers of the local ASEE are Professor B. F. K. Mullins of the engineering drawing department, vice-chairman; and Prof. E. S. Holdrege of the mechanical engineering department, secretary-treasurer.

Other officers of the local ASEE are Professor B. F. K. Mullins of the engineering drawing department, vice-chairman; and Prof. E. S. Holdrege of the mechanical engineering department, secretary-treasurer.

Other officers of the local ASEE are Professor B. F. K. Mullins of the engineering drawing department, vice-chairman; and Prof. E. S. Holdrege of the mechanical engineering department, secretary-treasurer.

Other officers of the local ASEE are Professor B. F. K. Mullins of the engineering drawing department, vice-chairman; and Prof. E. S. Holdrege of the mechanical engineering department, secretary-treasurer.

Other officers of the local ASEE are Professor B. F. K. Mullins of the engineering drawing department, vice-chairman; and Prof. E. S. Holdrege of the mechanical engineering department, secretary-treasurer.

Other officers of the local ASEE are Professor B. F. K. Mullins of the engineering drawing department, vice-chairman; and Prof. E. S. Holdrege of the mechanical engineering department, secretary-treasurer.

Other officers of the local ASEE are Professor B. F. K. Mullins of the engineering drawing department, vice-chairman; and Prof. E. S. Holdrege of the mechanical engineering department, secretary-treasurer.

Other officers of the local ASEE are Professor B. F. K. Mullins of the engineering drawing department, vice-chairman; and Prof. E. S. Holdrege of the mechanical engineering department, secretary-treasurer.

Other officers of the local ASEE are Professor B. F. K. Mullins of the engineering drawing department, vice-chairman; and Prof. E. S. Holdrege of the mechanical engineering department, secretary-treasurer.

Other officers of the local ASEE are Professor B. F. K. Mullins of the engineering drawing department, vice-chairman; and Prof. E. S. Holdrege of the mechanical engineering department, secretary-treasurer.

Other officers of the local ASEE are Professor B. F. K. Mullins of the engineering drawing department, vice-chairman; and Prof. E. S. Holdrege of the mechanical engineering department, secretary-treasurer.

Other officers of the local ASEE are Professor B. F. K. Mullins of the engineering drawing department, vice-chairman; and Prof. E. S. Holdrege of the mechanical engineering department, secretary-treasurer.

Other officers of the local ASEE are Professor B. F. K. Mullins of the engineering drawing department, vice-chairman; and Prof. E. S. Holdrege of the mechanical engineering department, secretary-treasurer.

Other officers of the local ASEE are Professor B. F. K. Mullins of the engineering drawing department, vice-chairman; and Prof. E. S. Holdrege of the mechanical engineering department, secretary-treasurer.

Other officers of the local ASEE are Professor B. F. K. Mullins of the engineering drawing department, vice-chairman; and Prof. E. S. Holdrege of the mechanical engineering department, secretary-treasurer.

Other officers of the local ASEE are Professor B. F. K. Mullins of the engineering drawing department, vice-chairman; and Prof. E. S. Holdrege of the mechanical engineering department, secretary-treasurer.

Other officers of the local ASEE are Professor B. F. K. Mullins of the engineering drawing department, vice-chairman; and Prof. E. S. Holdrege of the mechanical engineering department, secretary-treasurer.

Other officers of the local ASEE are Professor B. F. K. Mullins of the engineering drawing department, vice-chairman; and Prof. E. S. Holdrege of the mechanical engineering department, secretary-treasurer.

Other officers of the local ASEE are Professor B. F. K. Mullins of the engineering drawing department, vice-chairman; and Prof. E. S. Holdrege of the mechanical engineering department, secretary-treasurer.

Other officers of the local ASEE are Professor B. F. K. Mullins of the engineering drawing department, vice-chairman; and Prof. E. S. Holdrege of the mechanical engineering department, secretary-treasurer.

Other officers of the local ASEE are Professor B. F. K. Mullins of the engineering drawing department, vice-chairman; and Prof. E. S. Holdrege of the mechanical engineering department, secretary-treasurer.

Other officers of the local ASEE are Professor B. F. K. Mullins of the engineering drawing department, vice-chairman; and Prof. E. S. Holdrege of the mechanical engineering department, secretary-treasurer.

Other officers of the local ASEE are Professor B. F. K. Mullins of the engineering drawing department, vice-chairman; and Prof. E. S. Holdrege of the mechanical engineering department, secretary-treasurer.

Other officers of the local ASEE are Professor B. F. K. Mullins of the engineering drawing department, vice-chairman; and Prof. E. S. Holdrege of the mechanical engineering department, secretary-treasurer.

Other officers of the local ASEE are Professor B. F. K. Mullins of the engineering drawing department, vice-chairman; and Prof. E. S. Holdrege of the mechanical engineering department, secretary