

## Health Unit Announces Milk Product Standing

The Bryan-Brazos County Health Unit will publish monthly the average bacterial count and butter fat percentage on milk and milk products sold in Bryan and College Station.

Bryan Ordinance requires that the average bacterial count for milk be 30,000 or less and butter fat at least 4 per cent. This includes half and half at the present. Table or light cream 60,000 or less in bacterial count and at least 18 per cent butter fat. Whipping cream must also be 60,000 or less

## Peace Talks

(Continued from Page 1)

I may be completely wrong, but I think we are beginning to make progress," he said.

At the same time, Libby emphasized that negotiators still are "180 degrees apart" on the major issues—voluntary repatriation and safeguards to insure return of displaced civilians.

The Allies dropped their demand for participation of the international committee of the Red Cross on committees to handle details of prisoner exchange and civilian repatriation. Instead, Libby proposed that National Red Cross organizations of both sides be represented. The Communists said they would consider this plan.

Libby devoted considerable time to detailing the Allied position of the nine-point prisoner exchange plan offered by the Reds Sunday.

In reply to questions, the Communists explained the parole section of their plan meant that released prisoners would promise not to fight again in Korea.

The text said prisoners would promise to return to a "peaceful life" and not "take part again in acts of war." There was no limit on time or place.

The negotiators have reached general agreement on these points:

- That top priority be given the exchange of sick and wounded prisoners.
- That Panmunjom be the prisoner exchange point.
- That data be exchanged on prisoners who died in captivity.
- That civilians on both sides be given assistance in returning to their former homes if they desire. On this point, however, Libby insisted that safeguards such as interviews by joint Red Cross teams be provided.

## What's Cooking

COLLEGIATE 4-H CLUB: 7:30 p.m., 2A MSC. Don Nuean of Humble Oil and Refining Company will discuss a planned movie and TV show featuring two 4-H club members from each county in Texas.

in bacterial count, but at least 30 per cent butter fat.

The following are the averages on these products. For the butter fat percentage the average is for only the last three months. The bacterial count is the average of the last four months. The bacterial count will be listed first followed by the butter fat percentage.

For the Borden Company the averages are: pasteurized milk, 18,000—4.03 per cent; pasteurized homogenized milk, 28,000—4.0 per cent; table cream, 5,000—19 per cent; whipping cream, 2,000—31.1 per cent.

Carnation Company's averages are: pasteurized milk, 9,000—3.8 per cent; pasteurized homogenized milk, 14,000—3.8 per cent; half & half, 2,000—13.3 per cent; table cream, 3,000—17.8 per cent; whipping cream, 3,000—32.5.

Sanitary Farm Dairies — Bryan plant lists the following averages: pasteurized milk, 1,000—4.30 per cent; pasteurized homogenized milk, 1,000—3.9 per cent; half & half (cremello) 3,000—12.0 per cent; table cream, 1,000—17 per cent; whipping cream, 8,000—33.1 per cent.

Sanitary Farm Dairies, Inc.—Houston Plant (carton milk) averages are: pasteurized milk, 9,000—3.9 per cent; pasteurized homogenized milk, 4,000—3.8 per cent.

## Swimmers

(Continued from Page 3)

Blundell	6-2	195	Bk.S., F.S.
Broker	5-10	152	F.S., Sprints
Burns	5-10	152	Freestyle
Cameron	5-10	150	Diving
Comstock	6-1	185	Breaststroke
Crawford	5-9	150	Backstroke
Ellis	6-0	170	F.S., Sprints
Johnson	5-7	150	Diving
Jones	5-9	160	Freestyle
Koegl	6-3	220	F.S., Sprints
Maynard	6-0	150	Backstroke
Parnell	5-9	150	F. S., Dist.
Patton	5-6	130	Diving
Rubin	5-10	140	Bk.S., Br.S., F. S.
Sargent	6-0	125	Bk. S., F. S.
Seth	5-8	150	Freestyle
Snell	5-10	150	Breaststroke
Singleton	5-10	185	Freestyle
Skelton	5-11	175	Dist., F. S.
Wallin	6-0	180	Breaststroke
Wottring	6-0	165	Freestyle
F. S.—Freestyle. I. M.—Individual Medley, Bk. S.—Backstroke, Br. S.—Breaststroke.			

## Rooms in MSC

Organizations will lose the chance for permanent meeting rooms in the MSC unless reservation requests are in the front office of the MSC by Friday, said Mrs. Ann Hilliard, MSC social director. She urged all clubs to make requests immediately.

## CofC Membership Drive Underway

The 1952 membership drive for the College Station Chamber of Commerce began Saturday 1, with N. M. McGinnis as general chairman. Ed Madeley is South Gate area chairman. H. E. Burgess will handle the East Gate area, and K. A. Manning will handle the North and West Gate areas.

Single membership is \$5 per year, while family memberships, which entitle husbands and wives to voting privileges are \$6.

Business houses will be contacted by a special business solicitation group.

A program for 1952 is being drafted by Chamber President Marion Pugh and the Board of Directors to serve as a blueprint of board activities. Pugh said that the program will be a challenge to community responsibilities and will bring new manpower into community work. The program will touch on practically every phase of College Station civic and business life.

## Local Methodists Plan Landscaping

"Buy a shrub and watch it grow."

This is the slogan adopted by the A & M Methodist Church for plans to landscape the new church grounds, Mrs. Grace Martin, chairman of the landscape committee, has announced.

The church committee has two systems in which interested persons may help beautify the grounds. There are donations for shrubs and voluntary labor for planting.

Church and committee members have already started purchases and planting of shrubbery, Mrs. Martin said.

Landscape plans were drawn up by R. F. White of the landscaping department.

Mrs. Martin pointed out that persons interested in this project and in contributing either money,

labor, or shrubbery may contact any one of the following committee members:

Mrs. Grace Martin, chairman; Mrs. Joe Mogford, treasurer; Mrs. Tom Taylor, A. C. Magee, J. E. Loupot, Sidney L. Loveless, and Mrs. Fred Brisson.

## Dr. Neal to Head Ambulatory Clinic

Dr. Frederick C. Neal of Sapulpa, Okla. is newly appointed assistant professor in charge of the ambulatory clinic in the School of Veterinary Medicine.

He assumed his duties Jan. 26. Dr. Neal received his DVM from A&M in 1944.

Dr. Neal is married and has two children, a boy and a girl.

## DR. DWIGHT W. ANDRES

ANNOUNCES

the removal of his offices

from College Station to

3501 HIGHWAY 6 SOUTH, BRYAN

— Office Hours —

8 - 12 a.m.; 2 - 5:30 p.m.; Saturday 9 - 12 a.m.

PHONE 4-7351

## Ole Lou Needs Books!

See Ole Lou's want list (on another page) for a few of the books he needs RIGHT AWAY!

Sell those books you won't need, before they go out of date. Swap 5 for 4—5 books you don't need for 4 you do. Remember, books are usually worth more on a trade-in than they are worth in cash.

5 for 4

A DEAL WITH LOU—IS A STEAL FOR YOU!

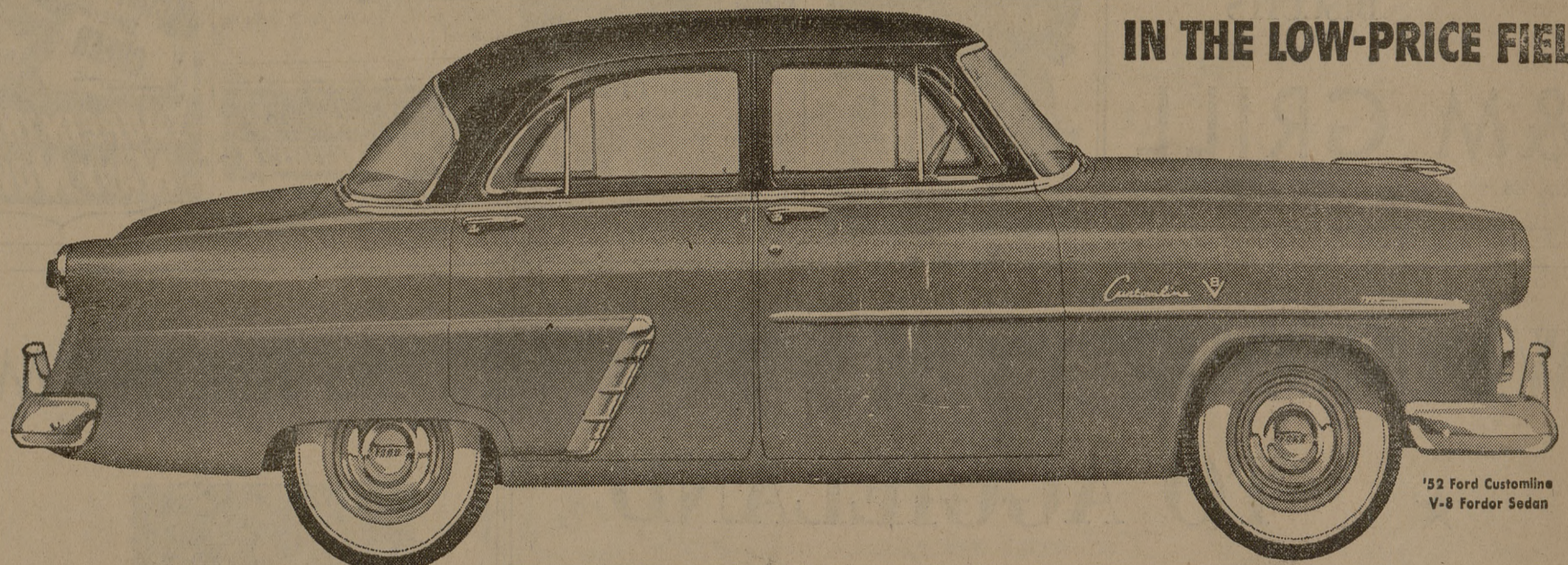
Loupot's Trading Post

North Gate

# Here Tomorrow!

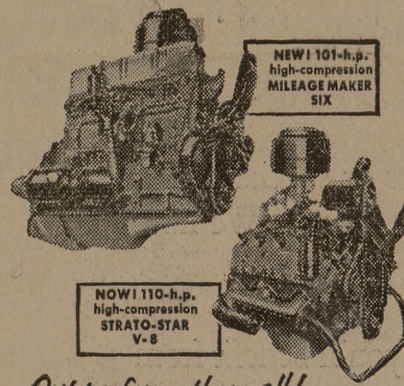
# THE GREATEST CAR EVER BUILT

## IN THE LOW-PRICE FIELD



'52 Ford Customline V-8 Fordor Sedan

# The big 1952 FORD



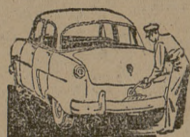
Out-performs them all!

In the '52 Ford you can enjoy brilliant new performance that surpasses that of any other car in its class! Ford's completely new 101-h.p. high-compression, low-friction Six, with free-turning overhead valves, is the most modern Six in the industry. And Ford's high-compression V-8, now 110-h.p., is the most powerful engine in the low-price field. Both are available with performance-improved Fordomatic Drive.



Out-rides them all!

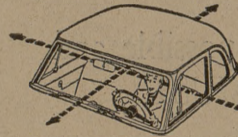
The '52 Ford gives you riding comfort such as you have never before experienced in a car in the low-price field. With front springs tailored to the weight of each model, longer rear springs and diagonally mounted shock absorbers, Ford's Automatic Ride Control for '52 gives you the smoothest, easiest ride of them all—a level ride on straightaways, an even keel on curves.



The car that has made greater strides forward for '52 than any other in its class!

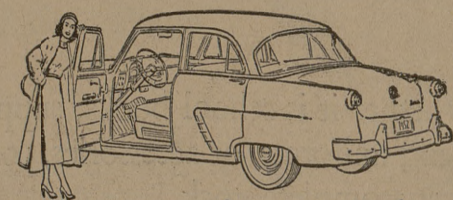
Exclusive Power Pilot Economy!

Both the new Ford Mileage Maker Six and the Strato-Star V-8 have the exclusive Ford Automatic Power Pilot. This completely integrated carburetion-ignition-combustion system gives you high-compression "no" on "regular" gas—a real money saving feature.



Full-Circle Visibility!

With narrower corner pillars, picture windows all around and a rear window that's 48% larger you have "all-direction" vision that adds to your enjoyment and your safety.



New Coachcraft Bodies!

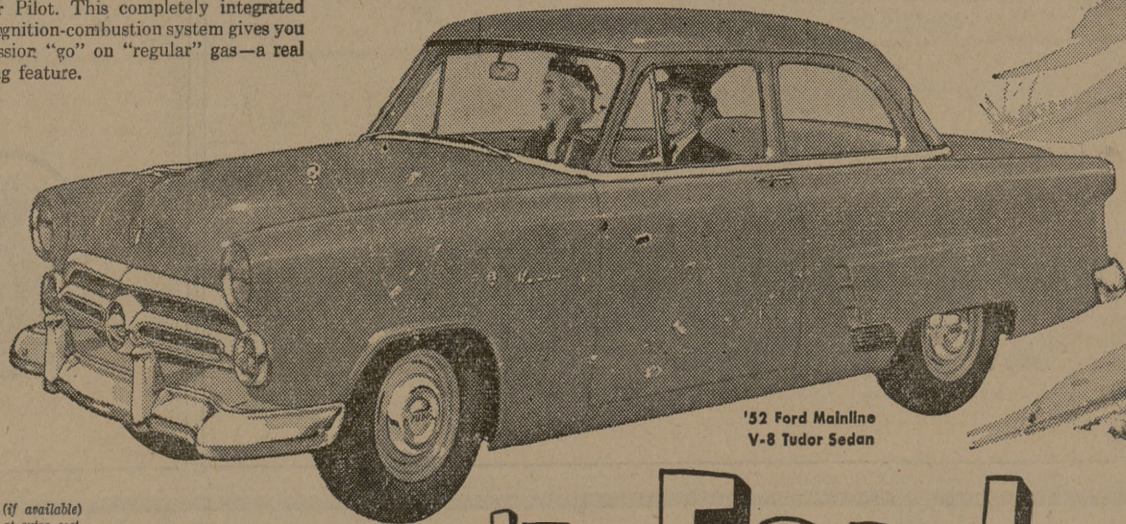
Ford's new Coachcraft Bodies are longer, stronger, distinctive in their modern beauty. They offer new hull-tight construction which seals out dust, weather and noise. And Ford has more color and upholstery combinations than any car in its field!

Out-values them all!

Model for model, feature for feature, no car in the entire low-price field matches the big new '52 Ford. With such modern design and engineering features as new Flight-Style Control Panel, new Power-Pivot Clutch and Brake Pedals, new Center-Fill Fueling, and new counterbalanced hood and deck lid, Ford adds up to more dollars and cents value than any car in its price class!

Out-sizes them all!

The '52 Ford has longer wheelbase, wider front and greater length. It's big outside and big inside, with spacious seating for six and the largest luggage locker of them all. It's a big family car that's a pleasure to own.



'52 Ford Mainline V-8 Tudor Sedan

Fordomatic Drive, Overdrive, white sidewall tires (if available) and two-tone colors on Customline Sedan optional at extra cost. Equipment, accessories and trim subject to change without notice.

You can pay more but you can't buy a better! **'52 Ford** Tomorrow Come in and see it! "YOUR FRIENDLY FORD DEALER" Cade Motor Company 415 North Main, Bryan

Battalion

Classifieds

### BUY, SELL, RENT OR TRADE.

Rates . . . 3c a word per insertion with a 5c minimum. Space rate in classified section . . . 60c per column-inch. Send all classified to STUDENT ACTIVITIES OFFICE. All ads must be received in Student Activities office by 10 a.m. on the day before publication.

### FOR RENT

FURNISHED bedroom, adjoining bath. Walking distance of campus, on bus line. Breakfast if desired. Phone 4-9054.

ONE NICE large bedroom in my home. Call 4-7054.

### LOST

BROWN overcoat made in Montevideo. See Bizzell 304.

### WORK WANTED

WILL CARE for small child in my home. Apt. A-9-Z.

WILL KEEP child for working mother. Apt. C-9-A College View.

WILL KEEP children in my home; \$2.25 a day. Noon meals. 406 Church St.

### Directory of Business Services

INSURANCE of all lines. Homer Adams. North Gate. Call 4-1217.

DR. M. W. DEASON  
Optometrist

313 College Main  
(Formerly Corky's)  
8:00 to 5:00 Ph. 4-1106

### HELP WANTED

HELP WANTED — Earn \$400.00 monthly, spare time. We will select a reliable person from this area to refill and collect money from our New Automatic Merchandising Machines. No selling. To qualify, applicant must have car, references and \$600 working capital. Devoting 4 hours a week should net up to \$400.00 monthly with the possibility of taking over full time. For interview write giving full particulars, name, address, age and phone number. Box 4096, San Diego, California.

### FOUND

MAN'S HAT. Owner can reclaim by identifying. Call 6-1713.

### Official Notice

Organizations will lose their chance for permanent meeting rooms in the MSC unless reservation requests are in the front office of the MSC by Friday, Feb. 8. Mrs. Ann Hilliard, MSC Social Director

### RADIOS & REPAIRING

Call For and Delivery  
STUDENT CO-OP  
Phone 4-4114

### ELECTROLUX

Bonded Factory Representatives  
NEW MACHINES, SERVICE  
SUPPLIES  
Phone 3-2193