

Quintet Leaves For '52 Opener

By GUS BECKER
Battalion Sports Writer

Basketball Coach John Floyd and ten members of varsity basketball squad left yesterday evening for Fayetteville, Arkansas, where they meet the Razorbacks for their first conference tilt of the 1952 season.

This will be the second meeting of the teams this year, with A&M coming out on top by three points in the first encounter.

Arkansas will be minus the services of their starting center, Billy (Toar) Hester, who was dropped from the team two days ago.

Elkins Probable Replacement

Orval Elkins, a six foot five inch forward-center who has replaced Hester in several games will probably start for the tall Hog five. Sophomore center, Raymond Shaw, has shown up very well this year and might earn a starting berth. Shaw stands an inch taller than Elkins at six foot six inches.

Don Binford and LeRoy Miksch, Aggie forwards are nursing injuries, but are expected to start against the Razorback cagers.

Askew Says "Inexperienced"

Arkansas Coach Presley Askew, labels his team as inexperienced and doesn't expect to be a contender for the conference crown,

Gene Lambert, six foot four inch forward and Walter Kearns, a six foot six inch forward give the Hogs an advantage in height.

Guards Floyd Sagemy, a sophomore standing six feet even and Sammy Smith, the only senior on the team, standing six foot three inches tall round out the Arkansas quintet, which is the tallest in the conference.

Aggies—Ball Control

The Aggies will use ball control against the Razorbacks, having a considerably smaller team in height. Jewell McDowell and Raymond Walker, guards for the Aggies, stand five foot ten and five foot eight inches respectively.

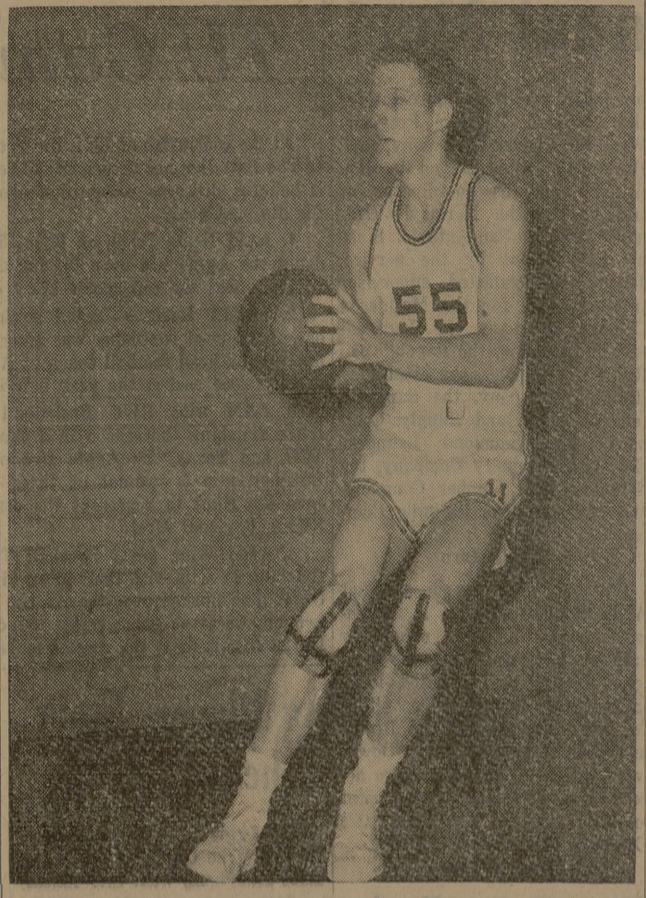
The fact that the Aggies won their game against the Hogs and the loss of Hester make the Cadets a slight favorite in the tilt Saturday night.

Hard To Beat

Coach Floyd remarked, "Arkansas is always hard to beat on their home court and the loss of Hester won't hurt them very much. They have a lot of big boys that can play center."

On their return, the Farmers will stop at Oklahoma City for a game with Oklahoma City University which was the winner of the Aal-College Tournament held in December.

Aggie Stalwart



Don Binford
This 6 ft. 1 1/2 in. sophomore from Wellington, Ken., has been starting at forward for the Cadets, and has shown he is well able to hold down a starting spot in his first year for the Aggies.

Fish Cagers Seek Revenge Over Victoria

The Aggie Freshman cagers, sporting a one won and one loss record, journey to Victoria tomorrow to seek revenge over the Victoria Junior College squad which came out on the long end of a 34-40 score in a game played here earlier in the season.

In their next game against the Allen Academy Ramblers, the Fish looked very much improved as they won that game 41 to 34.

Rodney Pirtle, standing six foot four inches, and Bob McCulloch, also standing six foot four inches, will probably start at forwards for the Freshmen. Dale Fisher a six foot three inch forward, and Robert Johnson, six foot one inch forward will also see action if Pirtle and McCulloch are taken out.

Guards will probably be Don Moon a five foot ten inch ball handler and Steve Rowley a five foot eleven inch lad from Louisiana.

Alternating with Moon and Rowley will be Thomas Latooof, a five foot ten inch guard from Big Sandy.

At center will be Cecil Neely, a six foot four inch lad that has come along fast, scoring fifteen points against Allen Academy.

The Gulf of California is among the finest fishing grounds in the world.

Kiwanis-CHS Tournament Opens Today; Tickets on Sale

Tickets are on sale for the sixth annual Kiwanis-A&M Consolidated High School Invitational Tournament which begins today at 3:00 p. m.

Lipscomb's Pharmacy, the MSC main desk, and Black's have been appointed selling points for the tickets.

Adult tickets for the entire ten games are \$1.00 and student tickets are \$.50.

Eight Teams Play

Eight teams are slated for the two day tourney, and each is expected to make a strong bid for top honors. However, Navasota, winner of last year's tournament, is slight favorite to repeat.

The other seven teams which will participate are Caldwell, Snook, Somerville, Rockdale, Cypress-Fairbanks, Hempstead, and A&M Consolidated.

Trophies will be awarded to the winner, runner-up, and winner of the consolation bracket. All-Tournament teams will receive special awards.

Officials for the tournament will be O. V. Chafin, L. E. Boze, E. E. Ivy, W. T. Riedel, and L. S. Richardson.

Rockdale and Navasota meet in the opening game of the first round today at 3:00 p. m. Cypress-Fairbanks and Hempstead are matched in the second game at 4:30.

Consolidated is favored to win their opener over Somerville. The Tigers beat Somerville once before this season in their first game of the year, 28-27.

Starters for the Tigers will probably be Pinkey Cooner and Byron Andrews at the guards, David Bonnen and Joe Motheral at forwards, and Bobby Jackson at the center post.

High Point Man

Motheral is high point man for Consolidated this season with 16 points. Probable reserves will be Jerry Leighton, Gayle Klippe, Bobby Smith, and Jimmy Richards.

Andrews was not expected to be ready for the meet, but it was reported he looks good and will probably start. Anderson, regular starter for the Tigers, has been out with an appendectomy and won't play.

Third Game at 7:00

The third pairing will be Caldwell and Snook at 7:00 p. m., and winding up today's schedule will be Somerville and A&M Consolidated tonight at 8:30.

TWO CLASSES FOR AGGIE COUPLES

J.O.Y.

and

Two by Two

First Baptist Church

College Station

RADIOS & REPAIRING

Call For and Delivery

STUDENT CO-OP

Phone 4-4114

Tickets On Sale For Aggie Winter Sports Banquet

Tickets are now on sale for the Aggie's Winter Sports Banquet according to P. L. Downs, general chairman of the Ticket and Finance Committee.

The dinner, co-sponsored by the A&M Athletic Department and the Brazos County A&M Club, will be held in Sbisa Hall on the night of Jan. 12.

This annual event is scheduled to honor members of the 1951 football and cross country teams. Awards to outstanding members of the football team will also be made at this time.

Buy Tickets Early

Downs has expressed a desire that everyone possible buy their tickets before Jan. 8 so that an initial estimate of attendance can be made.

Dick Hervey, executive secretary for the Former Students Association, reports that the Association will hold its annual club officers, and class agents' meeting over the week-end of Jan. 12 and 13.

At this time he expects some 150 persons attending this meeting will also go to the sports banquet.

The Aggies Club meetings are scheduled on both Jan. 12 and 13, and secretary Marshall Spivey expects a fairly large number of these club members to be on hand to honor the Aggie Athletes.

Downs has started a heavy sales campaign on ticket sales and he has distributed tickets to convenient locations both in College Station and Bryan.

Take Someone to Church This Week... You'll Both Be Richer By It

CALENDAR OF CHURCH SERVICES

BANKING SERVICE

COLLEGE STATION'S OWN

College Station State Bank

North Gate

Central Texas Hardware Co.

Bryan, Texas

- HARDWARE
- CHINAWARE
- CRYSTAL
- GIFTS

A&M CHRISTIAN CHURCH
9:45 A.M.—Church School
11:00 A.M.—Morning Worship

A&M CHURCH OF CHRIST
9:45 A.M.—Bible Classes
10:45 A.M.—Morning Worship
6:15 A.M.—Youth Meeting

A&M METHODIST CHURCH
9:50 A.M.—Sunday School
10:50 A.M.—Morning Worship
6:30 P.M.—Wesley Foundation
7:30 P.M.—Evening Worship

ST. MARY'S CHAPEL
Mass at 8:30 A.M.
Mass at 10:00 A.M.

A&M PRESBYTERIAN CHURCH
9:45 A.M.—Sunday School
11:00 A.M.—Morning Worship Service
6:30 P.M.—Student League and Fellowship

CHRISTIAN SCIENCE SOCIETY
7:30 P.M.—Wednesday Service (3rd Wed.)
11:00 A.M.—Morning Worship

AMERICAN LUTHERAN CHURCH
9:30 A.M.—Church School, Bible Classes
10:45 A.M.—Worship Service with Holy Communion

ST. THOMAS EPISCOPAL CHURCH
8:00 A.M.—Holy Communion
9:30 A.M.—Church School, Aggie Coffee Club
11:00 A.M.—Morning Prayer and Sermon
6:30 P.M.—Evening Prayer

BETHEL LUTHERAN CHURCH
(Missouri Synod)
800 S. College Ave., Bryan, Texas
9:30 A.M.—Sunday School and Bible Classes
10:45 A.M.—Morning Worship
Wednesday Vespers—7:30 P.M.
The Rev. Wm. C. Petersen, pastor

COLLEGE STATION BAPTIST CHURCH
9:45 A.M.—Sunday School
10:50 A.M.—Morning Worship
6:15 P.M.—Training Union
7:15 P.M.—Evening Worship

City National Bank

Member Federal Deposit Insurance Corporation

Bryan, Texas

LAUNDROMAT

HALF-HOUR LAUNDRY & CLEANERS

Authorized Dealer Hamilton (Home) Dryer

One Block East of College View Apts. College Station, Texas

The Exchange Store

"Serving Texas Aggies"

American Laundry

— and —

Dry Cleaners

Bryan, Texas

Serving the College Station and Bryan Communities Since 1909

First State Bank & Trust Co.

Member Federal Deposit Insurance Corporation
BRYAN, TEXAS

Henry A. Miller & Co.

North Gate Phone 4-1145

HARDWARE
FURNITURE
GIFTS

SCRAPS OF PAPER

Remember these days! We lived each one of them last year.

But now they are scraps of paper. They don't matter any longer. The days ahead are the ones that count!

That has always been the keynote of our Christian religion. One of the greatest of the early Christians expressed it for all time when he wrote:

Forgetting those things which are behind, and reaching forth unto those things which are before, I press toward the mark—for the prize of the high calling of God in Christ Jesus. (St. Paul in Philip- pians 3:13, 14)

Let the churches of our community help us to make this a truly happy New Year...

That is no seasonal greeting—it is the call to Christian worship and service for this coming year.

THE CHURCH FOR ALL... ALL FOR THE CHURCH

The Church is the greatest factor on earth for the building of character and good citizenship. It is a storehouse of spiritual values. Without a strong Church, neither democracy nor civilization can survive. There are four sound reasons why every person should attend services regularly and support the Church. They are: (1) For his own sake. (2) For his children's sake. (3) For the sake of his community and nation. (4) For the sake of the Church itself, which needs his moral and material support. Plan to go to church regularly and read your Bible daily.

Book	Chapter	Verses
Sunday	Philippians 3	7:15
Monday	Luke	9:57-62
Tuesday	Romans	8:31-39
Wednesday	I John	1:1-4
Thursday	Mark	10:17-22
Friday	Psalms	16: 5-11
Saturday	Psalms	91: 1-6

Redmond Real Estate Co.

MRS. HAROLD E. REDMOND

Res. Phone 6-3432

Real Estate Home Builders Rentals

Bryan Office Room 312 Varisco Bldg. Phone 2-1634
College Office 115 Walton Drive Phone 4-4701

The Church is The Core of the Community

ATTEND THE CHURCH OF YOUR CHOICE SUNDAY!

(Student Publications)

Lilly

MELLO KREAM
"A Nutritious Food"
Lilly Ice Cream Co., Bryan, Texas

USE BATTALION CLASSIFIED ADS TO BUY, SELL, RENT OR TRADE. Rates . . . 3¢ a word per insertion with a 25¢ minimum. Space rate in classified section . . . 80¢ per column-inch. Send all classified to STUDENT ACTIVITIES OFFICE. All ads must be received in Student Activities office by 10 a.m. on the day before publication.

• FOR SALE •

BLONDE colored baby bed with water-proof innerspring mattress. Both for \$25.00. See Campbell at 9B Vet Village.

1-36" WINDOW FAN with third H. P. motor; fits College View window \$30.00, 1 swing set \$3. C-17-D College View after 5:30 p.m.

1947 FORD CLUB COUPE, excellent condition. C-17-D College View.

1951 STUDEBAKER Champion Deluxe Fordor. Sky blue; Radio, climatzter; overdrive, spotlight washers. Low mileage and perfect condition. Priced at only \$1,795.00. Gene Trotter, 4-7281.

HERE'S your Christmas bicycle. 1949 boys' 24" Schwinn. Good buy! 6-1396.

Dr. Carlton R. Lee
OPTOMETRIST
303A East 26th
(Across from Court House)
Call 2-1662 for Appointment

SAFETY!
COURTESY!
ECONOMY!

SAFE-T-WAY TAXI
Phone 2-1400

Win k
r is given every Texan who has portant scientific tribution to the agriculture and
onsideration will persons engaged rtng agriculture red, color, na- professional or
nyone who wish- an agricultural ward. The nom- er within or out- which he is nom- inations are to ater than Feb. 1 of the regional with a full achievement of with any avail- publications.
Walt Kelly
SURE BUILT WPUL FAR C-17 FISBEK THESE GITS WITH US CU TTURS
Walt Kelly
DEIDE IM CAWLIN WITH ENDERMINTS IT OUTSIDE L HOORAW!
NK THIS LADY MISHAP MAKE MY UM SOGGY?
Walt Kelly
HAT KINDA RIDGE YA CALL THAT?
YOU PROMISED NOW!
By Al Capp
SOMETIMES I HAVE MY DOUBTS BUM-AS TO WHETHER YOU ARE SUITED FOR SUCH A HIGH OFFICE??
By Al Capp
OH MY COUNTRY- WHAT HAVE I DONE TO THEE?