

SHOP NOW

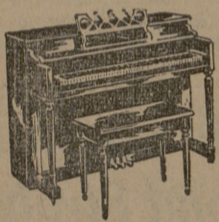
USE THE BATTALION
XMAS GIFT SHOPPING
GUIDE TODAY...

YOUR BRYAN MERCHANT WILL
SOLVE ALL YOUR XMAS PROBLEMS

**ONLY
10
Shopping
Days
Left**

MAKE
IT A

Christmas To Remember



MAKE IT A
MUSICAL XMAS

For that "special" Yule
gift . . . one of the fine
pianos from our collection.
See and try them now.
Available on our convenient
budget plan.

We Carry a Large Selection of —

NEW & USED PIANOS
from \$125.00 to \$1495.00

— EASY TERMS IF DESIRED —

New and Used Instruments
of All Kinds . . .

SEE US TODAY AND SELECT FROM
OUR COMPLETE LINE

"Make Peters Your Musical Center"

PETERS MUSIC COMPANY

213 W. 26th St.



CENTRAL TEXAS HAS . . .

Just What **SHE**
Always Wanted



Just the thing to add
ease and beauty to
your home . . . HAND
PAINTED METAL
HAMPERS, WASTE-
BASKETS, AND
KLEENEX BOX . . .
all in matching colors.



Give HER . . .
CHINA . . . a com-
plete line of Syra-
cuse and other fine
china to choose
from in many thrill-
ing patterns. . . Don't
delay . . . do it today!

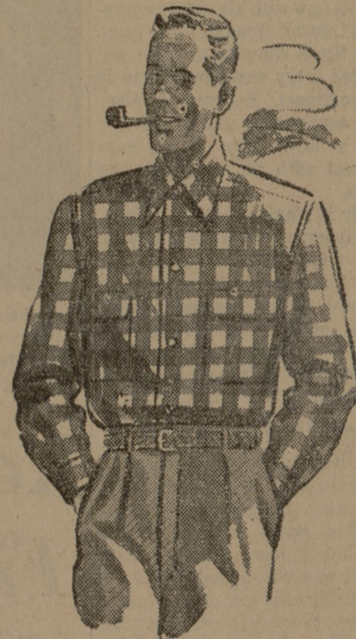
Wonderful WEAR-
EVER ALUMINUM
cookware. . . The
king of kings in her
kitchen, and so easy to
use. . . Make her day
happier and easier by
getting her some of
this Wearever . . .
today.



WE WILL GIFT WRAP AND MAIL ANY ITEMS
FOR YOUR CONVENIENCE.

**CENTRAL TEXAS
HARDWARE CO.**

for that 'Christmas Look'
WINGS SPORT SHIRTS



HEATHER MIST
luxury flannel, with
pin-picked collar
and flaps—
\$5.00

PAISLEY PRINTS
and other patterns
in soft rayon blend
\$3.95

**WING-GAB
DE LUXE**
your favorite rayon
gabardine in popu-
lar Fall colors—
\$5.00

**FLANNEL
PLAIDS**
in washable Sanfor-
ized cotton—
\$3.95

CLEAN CUT, RUGGED SHIRTS IN A WIDE
CHOICE OF COLORS & FABRICS!

**AKIN'S
MEN'S FURNISHINGS**
300 N. Main

A
DREAM
COME
TO
LIFE



• MINX
MODES
• CARLYLE
• MAJESTIC
• MARY
MOFFET

Dresses for all occasions are in our stock
with new ones added all the time. . .
Drop in. . .

We will gift wrap and mail any packages
for your convenience.

Priced \$15.00 to \$45.00

THE COLLEGIATE SHOP

113 N. Main

Wish Her A
MERRY
CHRISTMAS
. . . with a . .
HIGHLAND
FLING
TOMMIESET



Bold plaid gingham
(yarn-dyed) Tommie robe
over matching solid color
pajamas. Lime, Aqua,
or Carnation Pink pre-
dominating. 32 to 38 in
Proportionettes.

THE 3-PIECE SET . . . \$12.95
Separate Tommie Pajamas . . . from \$4.95

Lester's
Smart Shop



**GIFTS
HE
WILL WANT**

- Manhattan Sport Shirts
- Manhattan Pajamas
- Manhattan Neckwear
- Manhattan Handkerchiefs
- Enro Sport Shirts
- Style Rite Robes
- Sherman House Shoes
- All Wool Slacks

CONWAY & CO.

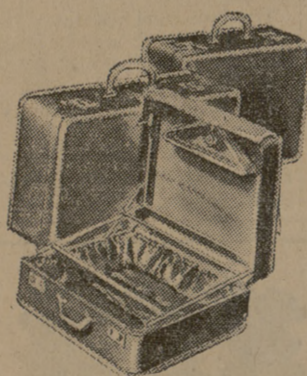
103 N. Main

OUTSTANDING VALUES OF
LUGGAGE

Santa's Last Reminder

Choose Luggage Gifts NOW

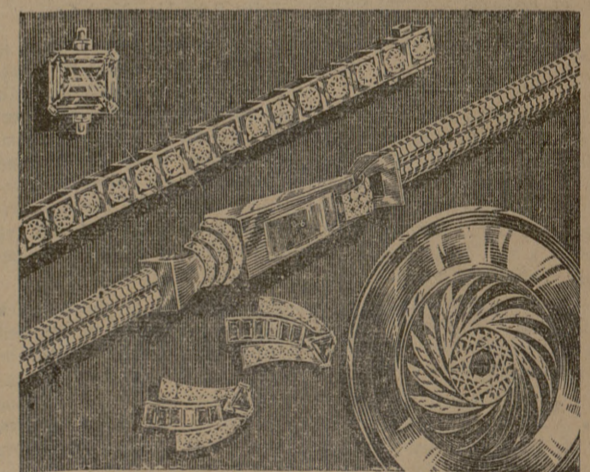
Time's running out
. . . and we don't
know how long our
stocks will be com-
plete. Come in right
now, and choose
smart, useful lug-
gage and leather
goods for Yuletide
giving!



Just the thing for
a person who "has
everything." . . . Stop
in today!

**PARKER-ASTIN
Hardware Company**

GIFTS

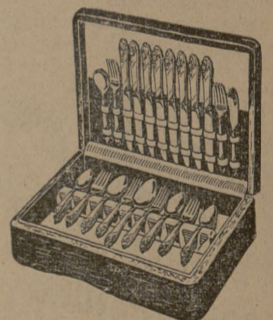


To Please Everyone

Can be found at
Caldwell's . . .

- RINGS . . .
- BRACELETS . . .
- CHOKERS . . .
- PINS . . .
- WATCHES . . .
- SILVER . . .
- CRYSTAL . . .

These are only a few of
the many wonderful gift
items to found at —



**CALDWELL'S
JEWELRY STORE**

112 N. Main

Col
News
To 9

Number 62:

Gen
Her
To I

Maj. Gen. Bruce
munder of the Fin
vision and the arm
on tank warfare,
Army ROTC stud
and will al
speaker at the Ros
tation Banquet to
The commander
mored Division wil
ference on Armor
and juniors from
in Guion Hall.

Purpose of the
will be to acquai
operation of the
He will speak on
ment, Organizati
Employment of t
mored Division."

The Thursday
period will be dis
ROTC students in
talk.

General Clarke
tured speaker at
night where seven
members will be i

"After the dinn
tion ceremony
RV First Sergean
reading the roll ca
Anderson will rea
tion.

A history of t
will be read by RV
and RV Comman
gles will adminis
new members.

Question
The Guion Hal
last two hours wit
od concluding th
General Clarke
rate in the Arr
in the New York
in 1920. A West
of 1925, he was
the Engineers.
War II, General
with General Path
in Europe as com
mored combat un
commanding gene
Armored Division

22 Deco
He has receive
and awards, amoi
tinguished Servic
tinguished Servic
Prior to World
Clarke was conn
work at the Univ
see. After the w
sistant command
ed School at Fort
ing this time Ger
ed a major role
American armore
Later, while on
Forces staff, the
ly responsible for
unizational an
changes in the
Division. Mord
manded a majo

Expe
Annu
Fifty-five pers
the sixth annual
ference being he
Dr. R. D. Lew
Texas Agricult
Station, welcome
the meeting. He
the first confere
January, 1947, a
Turf Association
These annual
sponsored jointl
Turf Association
Praise
Dr. Lewis pra
Dr. J. R. Wats
charge of turf
search. He ment
Dr. Watson has
opportunities to
much higher sal
ally continued wo
as turf program.
The developm
grass was discu
Holt, agronomist
breeding work f
Station.
Dr. Holt talk
evaluation phas
new grass. He
grass strains dif
or, texture, d
ability to comp