

Ags Pitted Against 'Okie' Powerhouse

By ED HOLDER BATTALION SPORTS NEWS EDITOR

Ray George's Aggies will combine their best passing and running attacks Saturday night against the highly rated Sooners of Oklahoma University.

The Cadets are expected to greet the Sooners with the smoothest showing they have yet displayed this year. Bob Smith is working out the bruises he received in the Cadet's game Saturday with Texas Tech but will be back in his fullback spot against the Sooners.

Smith will pace the attack with Billy Tidwell, who has been absent from workouts the past week as a result of head injuries received in the Cadets' opening game against UCLA.

The leading ground gainer of the SWC will also be present to add speed and smoothness to the Maroon and White attack. It is Glenn Lippman, who pounded out 156 yards in 18 tries against Tech.

Lippman—1951 Star

Pre-season predictions offered Lippman as the 1951 Aggie star. The statement was based on the idea all defenses would be set up against All-American Smith, and Lippman would take the advantage.

Starters for the Cadets will be the same as in the Tech game except for Tidwell's returning to right halfback. Charlie McDonald replaced Tidwell in the Tech game and the two are expected to alternate throughout the OU tilt.

Rounding out the backfield will be Dick Gardemal at quarterback. Gardemal has called the Aggie plays for three years and holds the confidence of fellow team members and A&M fans.

Charlie Hodge takes on added chores since the effective Aggie passing attack was revealed against UCLA. He has shown his deceptiveness and receiving ability in both the previous games and seems to be the favorite target.

Ags Have Smith

AP Picks A&M Over Oklahoma

New York, Oct. 4.—(AP)—How can you concentrate on football when all you hear is World Series?

But here are the gilt-edge winners of this weekend's big game. Texas A&M over Oklahoma: Oklahoma supposedly has some worries about its line. And which team has a better battering ram than Bob Smith of Texas A&M?

Texas over North Carolina: Both teams come into this inter-sectional contest with good marks. Texas has beaten the more rugged foes and should win here.

Arkansas over TCU. Rice over LSU. Tulane over Baylor. SMU over Missouri.

Ohio State over Michigan State: The big game of the week, possibly the big game of the season. Both teams have hordes of talent and both have plenty of incentives—Ohio State the Rose Bowl and Michigan State the smacking of another big ten team. The home field and Vic Janowicz give Ohio State a thin edge.

SKYWAY DRIVE-IN THEATRE

ADULTS ONLY Midnite Show: 11:30 p.m.

ALSO FRIDAY & SATURDAY AT 11:30 P.M.

THEY OUT-DARE! OUT-DAZZLE! OUT-STRIP!...Any burlesque girl revue filmed!

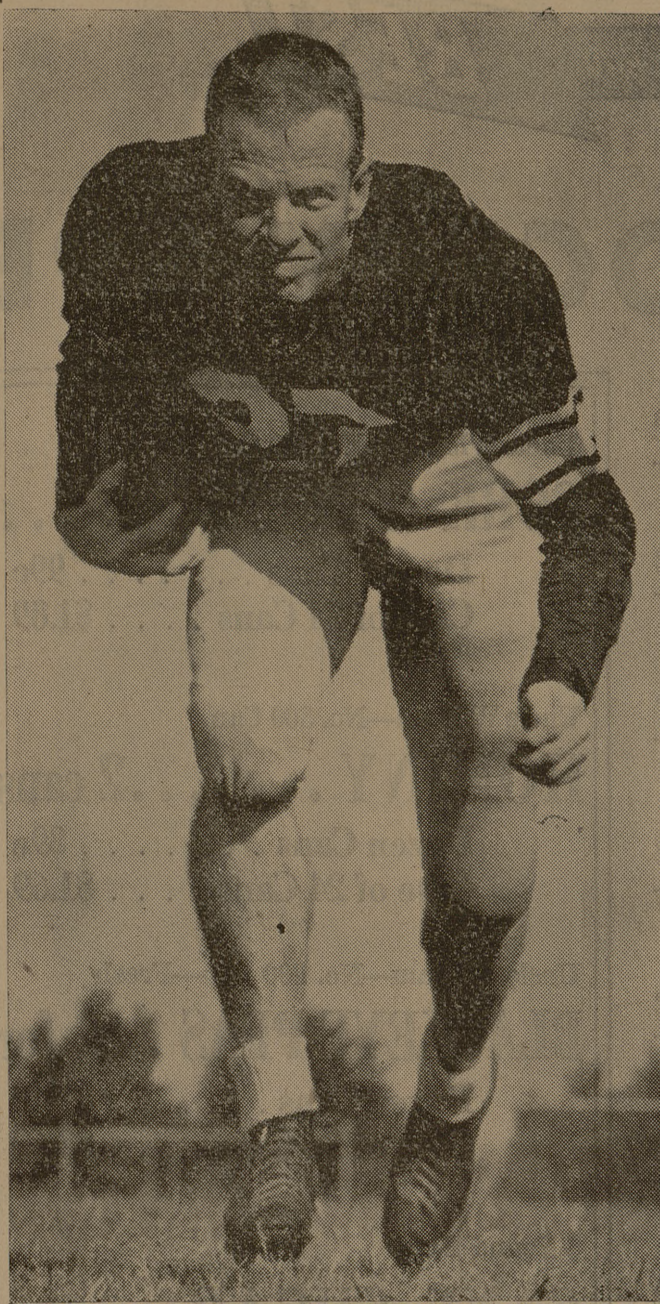
Hollywood Burlesque

Featuring JENNE and Starring HILLARY DAWN

Produced by J. D. KENDIS Directed by DUKE GOLDSTONE A CONTINENTAL PICTURE

ADMISSION 50c

Defensive Star



Charlie McDonald

Charlie McDonald, the Aggie's No. 1 defensive man, has been chosen as the Battalion's Defensive Man of the Week. Charlie was selected for his stout and lightning quick efforts against a strong Texas Tech team last week.

for passers Gardemal and Ray Graves. At the left end spot may be Walter Hill, who also will see action for the first time since the UCLA tilt. Hill fills in as both offensive and defensive end, and will add power to both squads.

Sam Moses will put his powerful 220 pound frame into action on the offensive lineup at left tackle. Moses also plays first team on the defensive lineup, and consistently stops plays even before they develop.

Little—60 Minute Man

Jack Little, another double duty tackle will face a tough opponent when he throws his weight into the Sooner's co-captain and All-American Jim Weatherall. Little hits the scales at 220 while Weatherall weighs in at 230, but despite the extra weight welded by the Sooner, it looks like a deadlock at right tackle.

At left guard slot will be Eloy Nohavitzka, 5' 10" and tipping the scales at 195. Nohavitzka has shown aggressiveness through the year in both workouts and games. He is substituted on the defensive team by Marshall Rush, who rates with the best in his defensive consistency.

Rush is also the man in the right guard offensive lineup. He weighs in at 195 and stands 5' 10".

Meyer—Also Double Duty

Center Hugh Meyer is also a double duty player. He is co-captain with Smith and has been pointed out by many for All-American honors.

Meyer also has the tough job as linebacker and has handled it in the past two games with a good display of quick thinking and action.

The Cadets are expected to work out under the lights tomorrow night to sharpen their ball handling for the night game.

Both of the previous tilts were played at night. This should be a point in the Cadets' favor, since the Sooners have only played one game. This was against William and Mary, and was played in the afternoon. The Oklahoma club was victor of this performance by a safe margin of 49-7.

—Beat O U—

Nickname Is 'Klepto'

Fish Coach James Holmes Returns To A&M Campus

By GUS BECKER BATTALION SPORTS WRITER

James Holmes, freshman football coach, tells an interesting story about the acquiring of his nickname "Klepto."

But the story told by his friends is even more interesting. It seems that while Holmes was playing baseball for Arlington State Junior College in 1922, the team went to Terrell, Texas, and played an asylum's baseball team. After the game, a fat negro woman ran up to him and said, "There's my Klepto, where have you been, Klepto?"

Naturally, the name stuck, but

Holmes version of the incident runs something like this.

The negro woman did say that but to another player, who with Holmes' brother went back to Arlington and spread the story in connection with the present "Klepto." In Holmes' 15 years of coaching, he has produced five junior college champions. This, plus the fact that he has also coached great teams in high school, made Holmes an ideal choice for a coach who could "get along with incoming freshman football players."

Holmes returned to A&M last spring to replace Perron Shoemaker as freshman coach. Shoemaker returned to Georgia where he was to serve as end coach.

It had been a lapse of 18 years since Holmes had been at A&M. He graduated from here in 1928, returning the following year to coach under Matty Bell.

He left A&M in 1933 to coach the Cuero High School team. In 1934, Holmes was head mentor of Alamo Heights High School of San Antonio.

Back to his first alma mater, Arlington State College, in 1935, "Klepto" guided the Arlington State squad to a championship. He also coached championship Arlington State teams in 1936, 1942 and 1943.

His teams were second in the old Texas Junior College Conference in 1940 and 1941. Coach Holmes was head coach at Arlington for 15 years and athletic director for the last 11.

Holmes entered Arlington in 1920 after playing four years of football there. "Klepto" came to

TU's Offense Stressed Again

Austin, Tex., Oct. 4.—(AP)—Offense was again primary in the University of Texas workout today.

Most of today's work stressed ground plays, with left halfbacks Gib Dawson and Jimmy Pace, shifted from right half, doing most of the carrying.

A team of ineligible reserves ran North Carolina single wing plays against alternating first and second stringers.

Fullback Phil Branch was ailing, the fourth Longhorn to be sidelined with an ankle injury. Branch, line-backer June Davis, End Bill Georges, Center Hugh Reeder, and fullback Byron Townsend, suffering from a painful back injury, are doubtful participants in Saturday's tussle.

—Beat O U— Willie Anderson won three consecutive Open golf championships in 1903, 1904 and 1905. That mark has never been equalled.

A&M Freshman Football Team Opens Season Against Blinn

By BOB SELECK

BATTALION SPORTS NEWS EDITOR

A&M Freshman Coach James Holmes displays his 1951 football team for the first time when the Fish meet Blinn Junior College Buccaneers on Kyle Field tonight at 7:30.

As to the chances of his freshmen charges, Klepto Holmes has chosen to remain silent. He is just hoping that they play better than they have done in their practice sessions.

The Fish are loaded with some of the best players out of districts all over Texas. They have shown lots of hustle and spirit and lack only that experience gained by actually playing.

No Definite Starting Lineup

Although Coach Holmes will be limited to 11 players to start the first, it is expected that during

Brooks Drop Flag to Giants

Climaxing their sensational uphill surge that overcame a 13½ game Brooklyn lead of Aug. 11 and sent them into a playoff, the Giants snatched their 16th flag out of the embers of defeat, downing the Dodgers, 5-4, in the bottom of the ninth with a three-run homer.

With hope all but gone after a three-run Brooklyn rally in the eighth, Bobby Thompson hammered a line drive into the lower left field seats on the second pitch of relief pitcher Ralph Branca.

As a result the Giants go into the World Series with the New York Yankees today at Yankee Stadium.

Trailing 4-1 going into the ninth, the Giants closed the gap to 4-2 on singles by Al Dark and Don Mueller and Whitey Lockman's double off the left field wall.

Lockman's smash knocked out big Dan Newcomb, who had a four-hitter going into the ninth.

On Branca's second pitch, Thompson broke up the ball game and the pennant race with one swing of his bat.

Not since the 1914 Boston Brave miracle men surged from last to first in a superb finish has a club rallied like Leo Durocher's Giants to win a pennant. And this tops them all, for the Giants were hopelessly beat, 13½ games behind as late as Aug. 11.

From that time on they won 39 of their last 47 to snatch the flag from the fingers of the disparate Brooks.

—Beat O U—

Drink Salesmen Needed

Soft drink salesmen are needed for the A&M-OU football game Saturday night. Ray Long of the Student Labor Office said Wednesday. Interested students should see Long.

the game he will play the whole bench to see just what kind of material he has.

The probable starting line-up will have Henry Clark at left end. Clark is an 18-year-old All-District end from Mesquite High School.

Drawing the starting assignment at right end is Bernie Sinclair who was All-District and All-State for Mineola High School.

Guard posts will be handled by Sidney Theriot, All-State for Terryborne High, and Marvin Tate, two-year All-State boy for Abilene.

The tackle chores are in the hands of Lonnie Sturges, All-District of Cotulla, and Lyman Preston, 18-year-old Austin lad.

Big Fish Center

Center for the Maroon and White Freshman, will be Leo Marquette. Leo is a 19-year-old boy who stands two inches over the six feet mark and tips the scales at 225 pounds.

The Fish backfield will take the gridiron with 180 pound average backing them up. Quarterback assignment will go to Joel Smith, All-Central Texas from Lockhart. James Self, the smallest man in

the starting lineup, Bernie Cook, and Virgil Patton complete the Fish backfield.

Blinn College has played two games so far this season, losing last week to the Baylor Cubs 41-0. Tickets to the general public are \$1.00. Students and coupon book holders will be admitted free.

In event of rain the game will be changed to the practice field beside Kyle Field. If the game is changed to the practice site, then the game will be free to everyone.

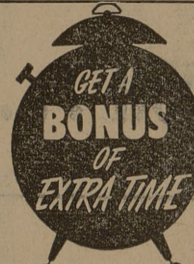
Probable JC Starters

Table with 5 columns: Pos., Player, Age, Wt., Ht. Listing starters for Blinn College.

Dallas

2 Flights Daily

One Way \$11.70 (Plus Tax)



Phone 4-5054 for information and reservations—or call your travel agent

Specials for Fri. and Sat., Oct. 5-6

- SPECIALS SNOWDRIFT 3 Lb. Can 89c LIGHT CRUST FLOUR 5 Pounds 43c ADMIRATION COFFEE Pound Package 83c PILLSBURY PAN CAKE MIX 1 1/2 Lb. 15c DIXIE MARGARINE Pound 27c GOOD HOPE MARGARINE Pound 23c KIMBELL'S TAMALES Big No. 2 24c BARBECUED BEEF Ireland's Sliced, No. 1 T. 63c VEGETABLE SOUP Campbell's, 2 Cans 23c DEL MONTE: Spinach, No. 2 15c Early Garden Peas, 303, 2 for 37c Yellow Cream Corn, 303, 2 for 33c Peach Halves, 2 1/2 29c Fruit Cocktail, 2 1/2 35c Pear Halves, 2 1/2 43c HUNTS Tomato Sauce 4 Cans for 29c RANCH STYLE BEANS 300 12c KIMBELL'S Blackeyed Peas 300, 2 Cans 25c DIAMOND CUT Green Beans No. 2, 2 for 25c LIBBY'S Tomato Juice No. 2, 2 Cans for 23c SUNSHINE Orange Juice No. 2 10c SANITARY Holiday Freeze 1/2 Gallon 59c STOKELY'S Pie Cherries No. 2 23c DREFT-CHEER Washing Powder Large Size 29c MEADOW GOLD Butter 1 Pound 83c T N T POPCORN 1 Can 15c TENDER LEAF TEA 8 Count—Bags, 2 for 17c ROYAL PUDDING OR Gelatin Desserts, 3 Pkgs. 23c CREAM OF WHEAT 14 Oz. 19c KIM DOG FOOD 2 Cans for 15c CHARMIN Bathroom Tissue 4 Rolls for 35c VERMONT MAID SYRUP 12 Oz. 25c KIMBELL'S Apricot or Peach Preserves, 12 Oz. 23c SWEL FUDGE and Frosting Mix 1 Can for 31c DROMEDARY Gingerbread Mix 1 Box 25c HORMEL Little Pork Sausage 1 Can for 39c KIMBELL'S Chili with Beans 300 Size 33c KIMBELL'S Whole Sweet Potatoes 2 1/2 Can 21c

- FRANCO AMERICAN Spaghetti 1 Can 14c BURLESONS HONEY 1 Pound 37c SUNSWEET Prunes, MEDIUM 1 Pound Box 27c MY BAR B Q SAUCE 8 Oz. 29c KIMBELL'S Golden Spiced Hominy 300 Size 9c DIAMOND Pinto Beans (Cooked) 300 Size 9c

MEATS

- ARMOURS STAR PICNIC HAMS Ready to Eat, 6 to 8 lb. av., lb. 47c ARMOURS COUNTRY STYLE PORK SAUSAGE 1 Pound 49c ARMOURS STAR Slab Bacon By the Piece, Lb. 49c ARMOURS STAR Tray Pak Bacon 1 Pound 59c LONG BOLOGNA 1 Pound 45c DIXONS WIENERS 1 Pound 39c SLICED CHOPPED HAM 1 Pound 69c VEAL CHUCK ROAST 1 Pound 69c VEAL CROWN ROAST 1 Pound 79c WISCONSIN Cheddar Cheese 1 Pound 59c FRESH JUMBO SHRIMP 1 Pound 75c HEART O TEXAS Fryers Per Pound (Cut Up) 58c

PRODUCE

- U. S. No. 1 SLICING TOMATOES 2 Pounds 29c CENTRAL AMERICAN BANANAS 2 Pounds 25c FLAME TOKAY GRAPES 2 Pounds 25c U. S. No. 1 California POTATOES 5 Pounds 25c

FROZEN FOODS

- FLOWING GOLD OR WHOLE SUN ORANGE JUICE 1 Can 19c BIRDSEYE: PERCH, Package 43c PEAS, Package 23c CUT CORN, Package 19c SPINACH, Package 23c

SUNDRIES

- TONI Home Permanent Refill, \$1 size...59c HALO SHAMPOO 60c Value 39c KOTEX—48's \$1.19

THE SHOPPING CENTER A PERSONALIZED SUPER MARKET COULTER DRIVE AT HIGHWAY 6

Job Opportunities with Humble Oil & Refining Company. ENGINEERS who will receive B.S. degree in January. Advanced Engineers, Chemists, Physicists who will graduate during 1952. GEOLOGISTS who will receive B.S. or M.S. degrees in January. Includes contact information for W. R. Horsley, Director.