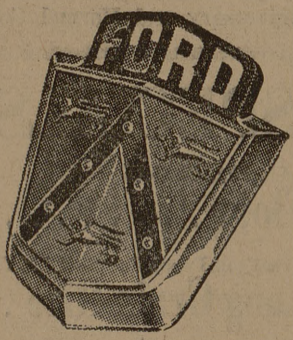


Clothes for the entire family

**PENNEY'S**  
ALWAYS FIRST QUALITY

In Bryan In the Varisco Bldg.

THE FORD'S HOME IN BRYAN AND COLLEGE STATION



IS

**CADE MOTOR COMPANY**  
"Your Friendly Ford Dealer"

415 N. Main Bryan

**Lack's**  
For all  
Auto Accessories

... Owns and operates Lack's Associate Store at 217 South Main Street in Bryan, handling all sorts of Auto Parts, Accessories, Crosley Shelvador Refrigerators, Freezers and Ranges. Joe also has one of the finest repair garages in the Bryan-College Station area.

**LACK'S ASSOCIATE STORE**  
217 So. Main Bryan Ph. 2-1669

★

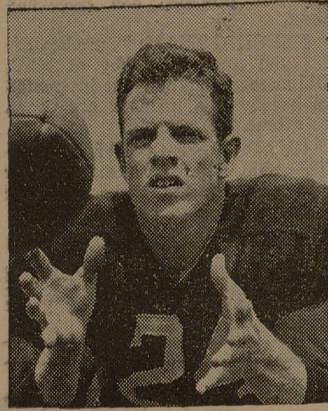
**Gig'Em Aggies!**

Make Texas Teck

The Next Feather in Your  
1951 Season  
Victory Cap

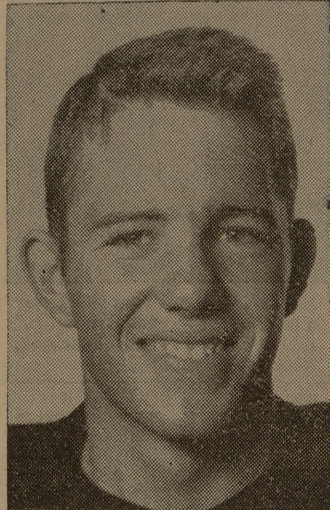
★

# The Battalion Quarterback Club



Charlie McDonald  
Left Halfback

Was outstanding on pass defense, set up game-winning touchdown on pass completion of 40 yards from Gardemal. Also contributed key tackles.



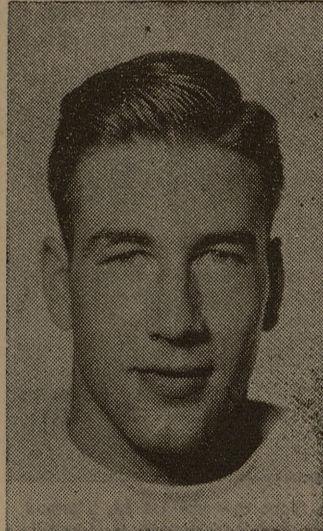
Jim Fowler  
Linebacker

Jim was in there every quarter to plug the holes. He consistently stopped Bruin backs cold as they came roaring up to the Cadet line.



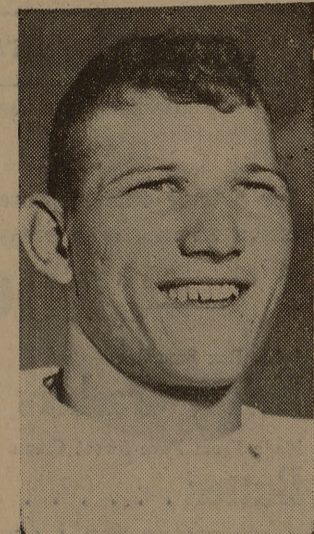
Ray Graves  
Quarterback

Tossed two touchdown passes to put Cadets ahead in the last two minutes of the first half. Turned several apparent losses into gains after he had dropped back to pass.



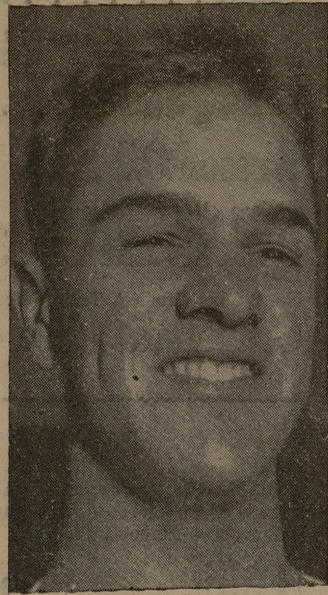
Darrow Hooper  
Left End

Saved the day for A&M when he stole the ball from a Bruin back in the final few minutes of the game. His steal gave the Aggies possession of the ball until the final gun sounded.



Charlie Hodge  
Right End

Made circus catches of Cadet aeriels all evening. Caught the game-winning touchdown late in the fourth quarter, plus five other long gainers.



Yale Lary  
Halfback

Saved the day for the Aggies when he stopped the last UCLA thrust on the Cadet 5 yard line. In addition to being a standout on pass defense, Lary caught the second A&M touchdown pass.

## Red Raiders Primed For Aggie Battle

Texas Tech Red Raiders will be "high" for their game against Texas A&M in Dallas Saturday night.

Odds favor the Cadets to defeat Tech for the tenth time in the twelve game series, but the Red Raiders under new head coach, Dewitt Weaver, will be striving to up-set the dope bucket.

Two stalwart linemen—tackles Jerrell Price and Red Phillips—have the size and experience to stop the Cadet running attack.

Backfield coach Jack Mitchell, former All-American at Oklahoma, has helped install the Split T at Tech. Proof that he did a good job was demonstrated last week when Tech downed last year's Border Conference Champs, West Texas State, 46-7.

Until last week, Tech was primarily concerned with stopping the plunges and pitch-outs of Bruisin' Bob Smith. The game with UCLA proved the A&M passing attack has teeth in it, so now the Raiders have another worry, pass defense.

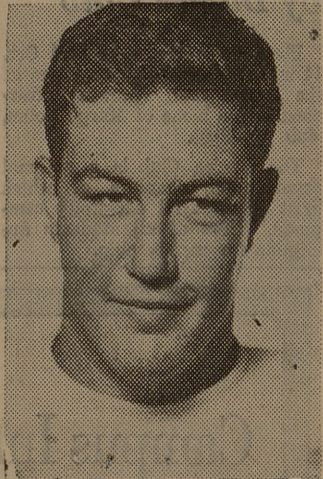
Trying to stall the Aggie passing attack will be Elmer Arterburn, safety; Bobby Close, halfback; Gene Doss, quarterback; and Frank Graves, halfback who also dubs as Tech's kick-off specialist. Lewis Crossley and Alton Linne, wing-men will give Tech a passing offense of its own.

In all seventeen lettermen return to Tech. The Red Raider line will average 192 pounds and 175 in the backfield.

In last week's UCLA game, the Aggies restrained their backs to line plunges between the tackles. Only once was Bob Smith sent wide on one of his famous pitch-out plays, and that time he picked up 20 yards. These consistent line bucks by the Cadets tended to keep the Bruin defense, which had been designed especially to stop Smith, "bunched" at the scrimmage line.

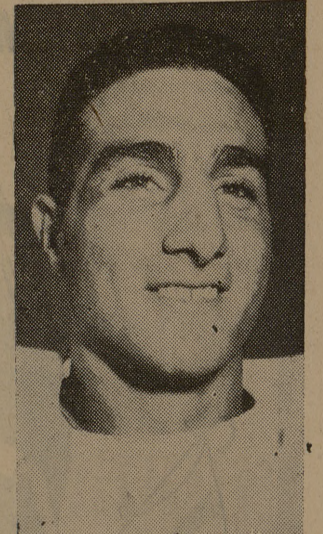
This made UCLA vulnerable to the A&M passing attack, which was composed mainly of "button-hook" passes just past the line of scrimmage.

Exactly how Tech proposes to stop both the running and passing attacks of A&M remains the question of the week. Tech hopes to find the answer before the Cotton Bowl game Saturday night.



Alvin Langford  
Left Guard

Stood out on defense throughout the game. Was instrumental in stopping Bruin drives short of the Aggie goal.



Sam Moses  
Left Tackle

Was a terror on defense for the Maroon & White. Spent most of the evening as the fifth man in the Bruin backfield.

**QUARTERBACK CLUB CONTEST**

| Team             | Score | Team          | Score |
|------------------|-------|---------------|-------|
| Texas A & M      | _____ | Texas Tech    | _____ |
| S. M. U.         | _____ | Ohio State    | _____ |
| Arkansas         | _____ | Arizona State | _____ |
| Rice             | _____ | Clemson       | _____ |
| Texas University | _____ | Purdue        | _____ |
| Texas Christian  | _____ | Nebraska      | _____ |

NAME \_\_\_\_\_  
ADDRESS \_\_\_\_\_

All entries must be received in The Battalion office or post-marked not later than 5 p.m. Friday. Winner will receive two free tickets to next week's game with Oklahoma University.

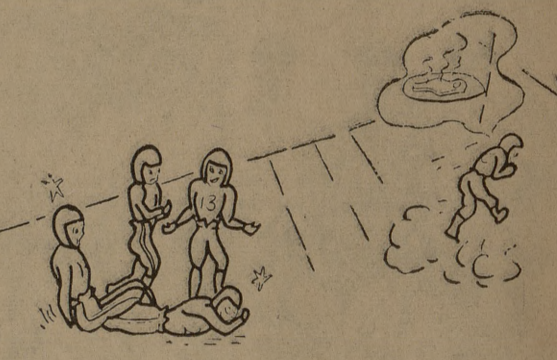
**Movies on Slate**

Movies of the UCLA-A&M game to be shown tonight at QB Club meeting.

**George to Speak**

Coach Ray George to address first QB Club Meeting tonight at 7:45 in Assembly Hall.

"No Use Trying to Stop Him . . .  
He's on His Way to A&M GRILL"



**A&M GRILL**  
NORTH GATE

Carl Martin Bob Martin '48

- Central Heating
- Gifts
- China
- Glass
- Housewares
- Electric Appliances

**Parker Astin**  
BRYAN, TEXAS

Let Us Take Care of Your . . .  
**CLEANING and LAUNDRY**

For Dormitory Students —

LOUPOT'S TRADING POST  
(College Station Substation)

For College Apartment Students —

CONVENIENT PICKUP AND DELIVERY  
SERVICE AVAILABLE — PH. 2-1584

**AMERICAN**  
DYERS-FUR STORAGE HATTERS  
LAUNDRY-DRY CLEANERS  
DIAL 2-1584

Welcome  
Aggies . . . .

★

**Kelley's Coffee Shop**

"GOOD FOOD . . . THAT'S ALL"

Ralph Stacy 201 South Main

Fill it With  
**Phillips 66**

Before going to the football games . . . come by and let us give you complete bumper to bumper service. As to the buying, "That's up to you."

MAY WE FILL IT WITH PHILLIPS' 66

Courteous . . . Efficient Service

We believe the difference is in the treatment customers receive.

**TOM McCALL'S**  
Phillips' 66 Service Station  
Hwy. 6 at N.E. Corner of Campus

if it's Sanitary  
milk it's  
fresher



AT YOUR STORE  
OR AT YOUR DOOR

**Sanitary**  
FARM DAIRIES