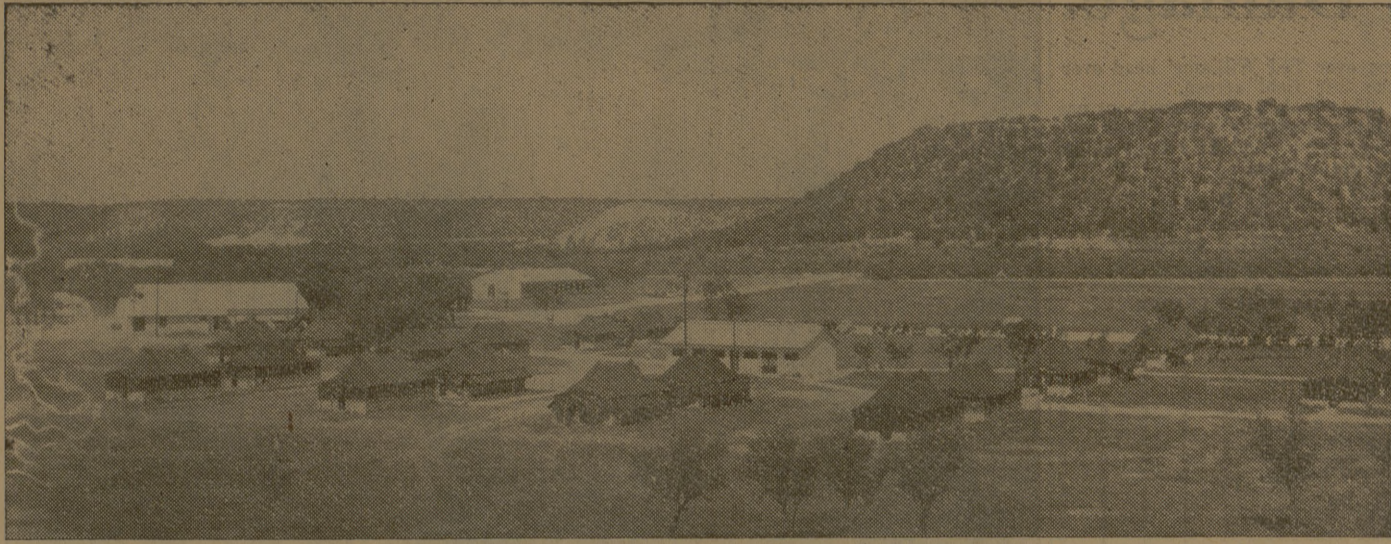


# A Picture Visit at A&M's Junction Adjunct



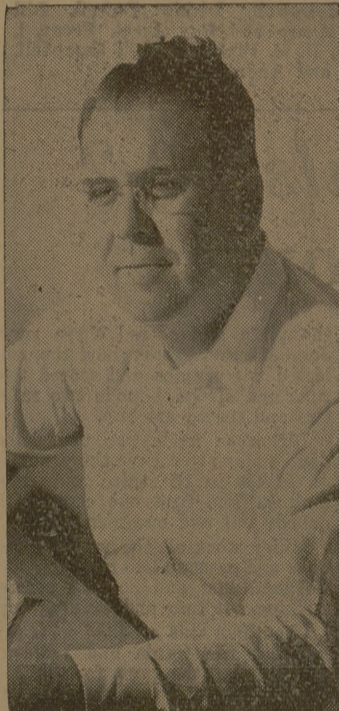
Organized recreation is a part of the daily routine for the high school graduates attending the A&M Adjunct in Kimble County. Luke Harrison of the Physical Education Department is in charge of organized recreation at the Adjunct.



Located on the South Llano River near Junction in West Texas' Kimble County, the A&M Adjunct opened its first official session in June with 53 high school graduates reporting for college preparatory work and recreation. Also enrolled at the Adjunct are 24 students attending civil engineering Summer camps and 64 geology Summer campers.



In the broad wide-open spaces of Kimble County, civil engineering students have lots of room to set up their surveying equipment this Summer. Twenty-four of the engineers are registered for this course taught at the A&M Adjunct near Junction.



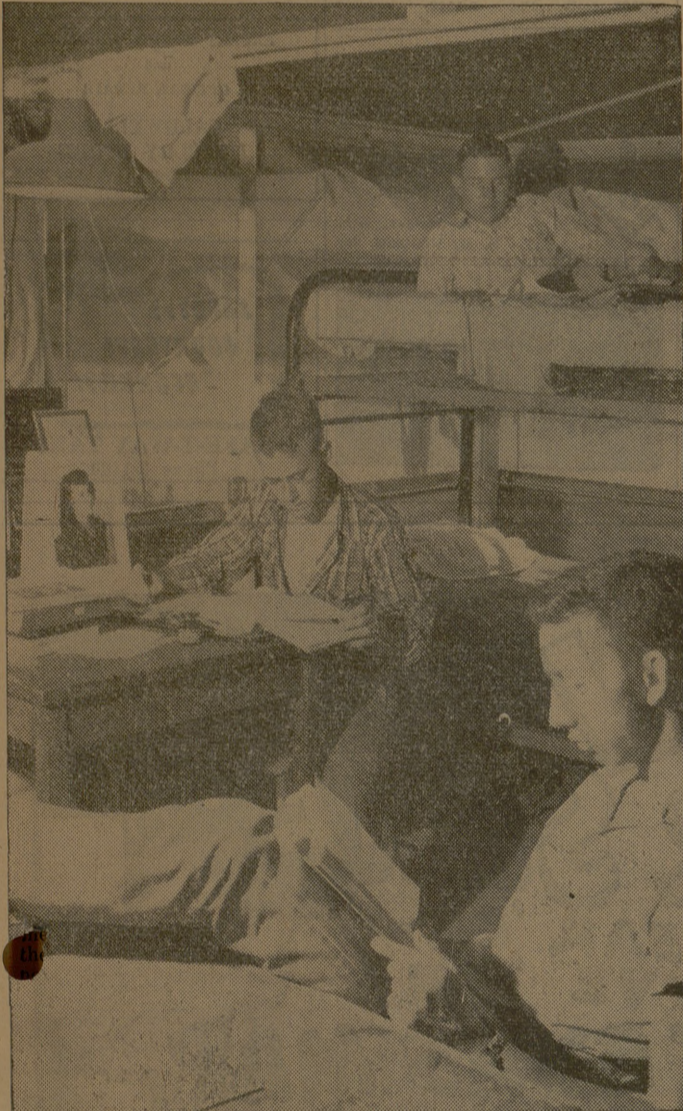
**C. H. Ransdell**  
Assistant director of the adjunct, Ransdell has spent the past six weeks there. He serves as assistant to the Dean of the Basic Division during regular school semesters.



Yes, there's also time for fishing at the A&M Summer Adjunct near Junction. The South Llano River offers many splendid fishing "spots" for the students in their spare time. These boys are inspecting their rods and reels before leaving on a fishing expedition. "One boy, however (left), doesn't fit in the roll with a slide rule in his hand instead of a rod and reel.



"Batter up! And here's the pitch..." Even the vast A&M intramural program was taken to the A&M Adjunct near Junction where recent high school graduates and geology and civil engineering summer campers get a chance for exercise after classes are over.



Amid the fun and relaxation at the camp there must also be study periods for the 53 high school graduates enrolled at the A&M Adjunct near Junction for college preparatory work this Summer. Instruction is offered in freshman English, mathematics, and physical education.



Reading comprehension is another point taken into consideration for getting the high school graduates ready for college work. At the Junction A&M Adjunct, the boys are given mechanical aids to better their reading speed and efficiency.



**Dr. John R. Bertrand**  
Director of the Summer A&M Adjunct is Dr. Bertrand who is also Dean of the Basic Division. He was appointed last December.



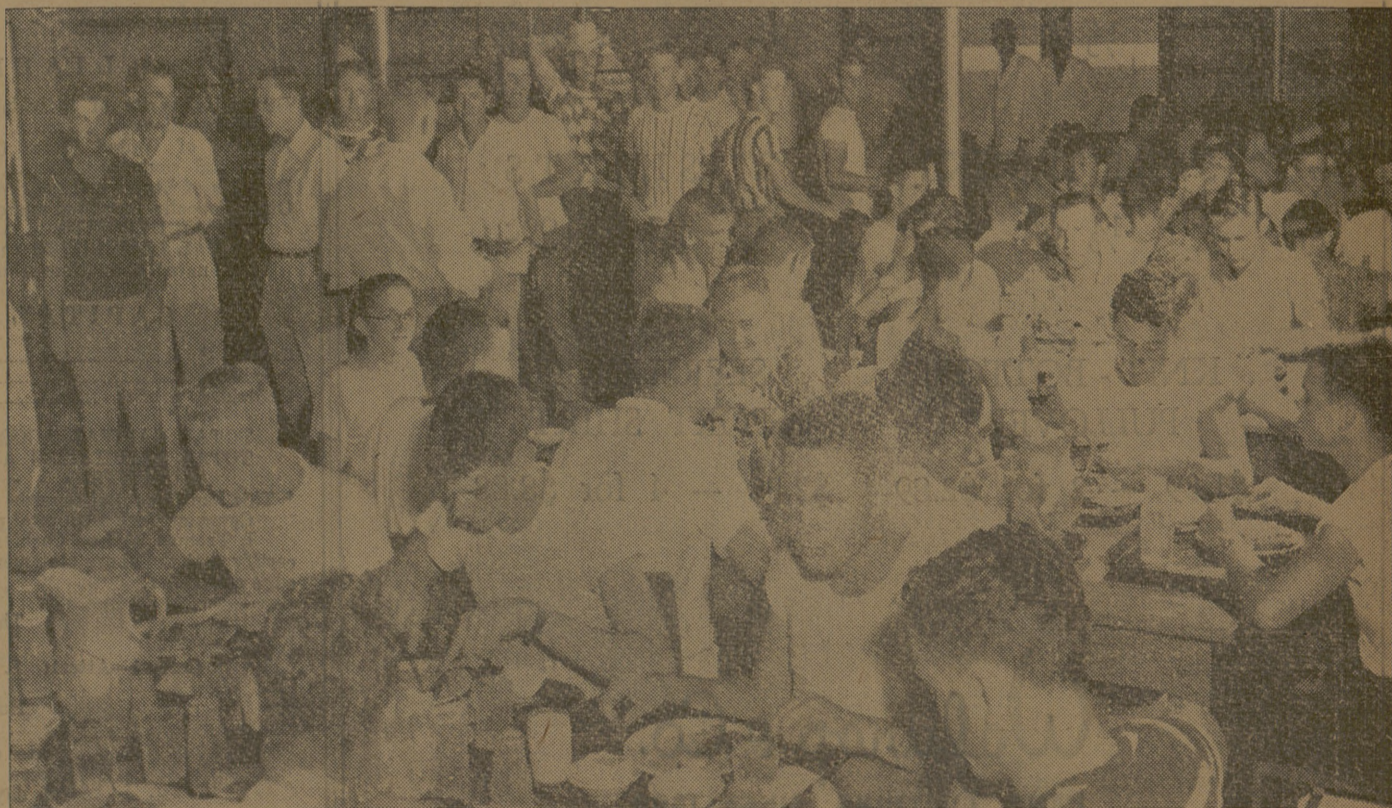
Outdoor classrooms are one of the many outstanding features of the A&M Summer Adjunct at Junction. Instructors for the recent high school graduates take advantage of the numerous, big shade trees as an outdoor shelter from the sun. These students are getting preparatory work in freshman English.



The Geology campers found their usual Summer camping quarters a little more luxurious with the additional students attending the A&M Adjunct in Kimble County. Vic Russek, geology major from East Bernard, is looking over plans for the days expedition in the area surrounding the camp.

## A&M's Summer Adjunct

Classes officially began Thursday, June 7, at the A&M Adjunct in Junction with 53 high school graduates reporting for the first day's class sessions. This commenced the first year's operations at the newly constructed Camp in West Texas' Kimble County. Along with the new student group, there are 24 civil engineering and 61 geology students attending their respective Summer camps now located at the Adjunct. Dr. John R. Bertrand, dean of the Basic Division, is director of the Summer adjunct. C. H. Ransdell, assistant to Bertrand in the Basic Division, is also assistant director of the Adjunct. Courses being offered for college credit include first year mathematics, 101 and 102; freshman English, 103; physical education 101; and basic 101, remedial reading.



It'schow time in the Mess Hall at the A&M adjunct at Junction. The 150 students enrolled at the camp find modern eating conveniences operated by the A&M Mess Hall. The students are served cafeteria style and are seated eight to a table in the new dining room.