

**Duchesses
for
1951
Cotton
Pageant
and
Ball**



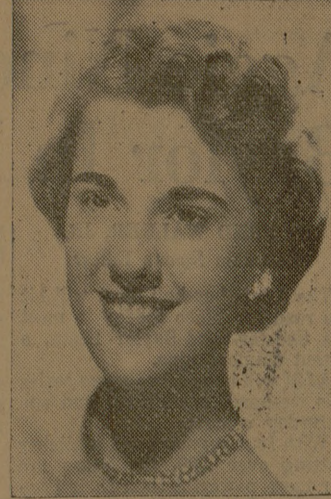
Miss Patricia Young
Escorted by John Gossett
Seventh Regiment



Miss Dolores Sanchez
Escorted by Ernesto Sanchez
Laredo Club



Mrs. Elizabeth Williams
Escorted by Harold Williams
Kream and Kow Klub



Miss Nan Hassler
Escorted by Joe Johnson
Artillery Regiment



Miss Ruth Ann Tipton
Escorted by Russell Smith, Jr.
Junior Class



Miss Jean Hamilton
Escorted by Eddie Wright
Laredo Ex-Student Club



Miss Joanne Branch
Escorted by Joel Austin
The Battalion



Mrs. Frances Fehrmann
Escorted by Robert Fehrmann
Petroleum Club



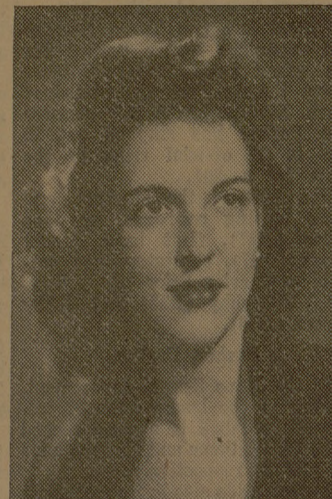
Miss Della Ann Young
Escorted by John Devine
Newcomers Club



Miss Sarah Barrow
Escorted by Richard Ewing
LaVillita DAR



Miss Georgia Bossart
Escorted by Karl Meyers
Ag Council



Mrs. Ann Clark
Escorted by Bill Clark
SAM



Miss Betty Box
Escorted by Don Young
36th Division A&M Club



Miss Nancy Howell
Escorted by Bill Chamlee
A&M System



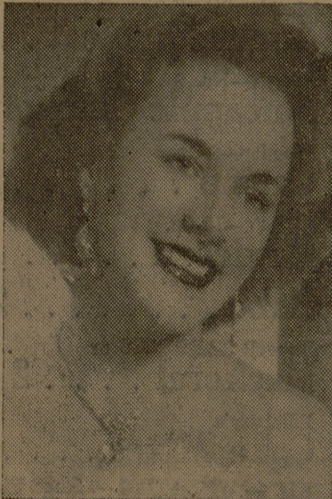
Miss Jean Swinner
Escorted by Chuck Ainsworth
Lufkin Club



Miss Docia Schultz
Escorted by Stanley Southworth
Air Force Regiments



Miss Connie Nelson
Escorted by Joe C. Wallace
Phi Eta Sigma



Miss Sue Stendebach
Escorted by Robert Fitts
Collegiate FFA Chapter



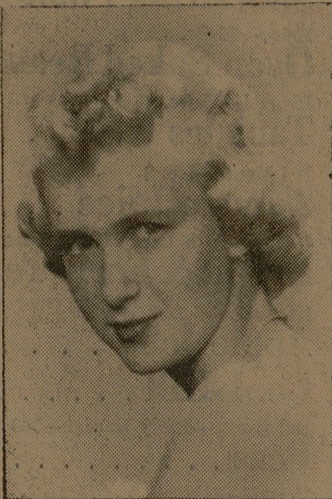
Mrs. Bonnie Maddox
Escorted by Ross Maddox
Saddle and Sirolo Club



Miss Betty Napier
Escorted by Winfred Shown
A&M Women's Social Club



Miss LaVerne McAshan
Escorted by Charles Lyons
Houston Mother's Club



Miss Gail Grissom
Escorted by John B. Stephens
Abilene Club



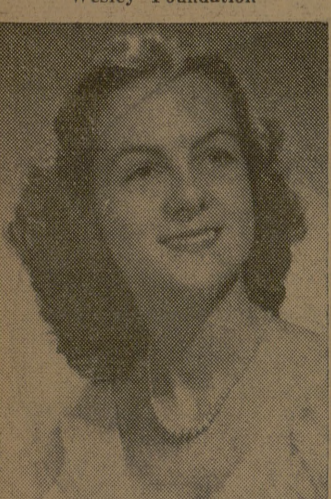
Miss Jo Standley
Escorted by Holland Winder
Madisonville, Texas



Miss Sidney Howell
Escorted by Lawrence Ashburn
Wesley Foundation



Miss Lucille Ebert
Escorted by A. W. Seiter, Jr.
Guadalupe-Cómal County Club



Miss Sue Hill
Escorted by Bob McGraw
East Texas Club



Miss Wilma Moore
Escorted by Lee R. Howard
Foundryman's Society

**SPALDING
SPORTS SHOW**

NOT ONLY WAS THE FABULOUS SUZANNE LENGLEN A BALLERINA OF THE COURT SHE WAS ALSO ACCURACY ITSELF

"OH, MA CHERIE! TOMORROW WE SHALL USE ONE OF YOURS"

IT IS SAID SHE COULD HIT A HANDEKERCHER HER FATHER SPREAD ON THE COURT 4 FEET OF 5 TIMES

TWO RULES OF STAR PLAY
RULE 1 - PLAY WRIGHT AND DITSON RACKET
RULE 2 - PLAY WRIGHT AND DITSON BALL

THE GREEN RULES OF TENNIS

SPALDING-MADE WRIGHT AND DITSON BALL

THE ONLY OFFICIAL BALL OF THE U.S.L.T.A. CHAMPIONSHIPS SINCE 1887 AND OFFICIAL IN EVERY U.S. DAVIS CUP MATCH EVEN IN TESTS TOUGHER THAN ACTUAL PLAY THIS FAMOUS BALL STANDS UP TO U.S.L.T.A. STANDARDS!

SPALDING-MADE WRIGHT AND DITSON RACKET

FIBRE-STEELING FRAMES THE "THROAT" RAINBOW REINFORCES THE SHOULDERS NEW SUPER-STRENGTH ADHESIVE BRACES THE LAMINATIONS IN THE "BOW"

**Wright & Ditson
CHAMPIONSHIP
APP. U.S.L.T.A. - WOOL COVER**

**MADE BY
SPALDING**

GROCERY SPECIALS

BALLARD BISCUITS . . . Can 11c

White House Zenith
RICE Full 2 Pound Box 29c

Lady Betty
SALAD DRESSING Pint 35c

Low Everyday Price
CRISCO 3 Lb. Can \$1.07

Popular Brands
CIGARETTES Carton \$1.86

10½ Oz. (3 Cup Size) 93c Value—Large Pieces
SHELLED PECANS Pkg. 79c

39c Value—Pillsbury's Chocolate
CAKE MIX Pkg. 29c

Nestle's Morsels
CHOCOLATE CHIPS . . . 2 Pkgs. 39c

Chase & Sanborn's
COFFEE Lb. Can 83c

303 Cans Libby's
FRUIT COCKTAIL 2 cans 43c

Armour's Dash
DOG FOOD 2 cans 25c

45c Size—Elmer's mint or
FRUIT BUBBLES Can 39c

No. 1 Shelled Spanish
PEANUTS 1 Lb. Cello 25c

15-Oz. Pkg. Sunmaid Red Box
SEEDLESS RAISINS Pkg. 27c

8-Oz. Pkg. Baker's Semi-Sweet
DOT CHOCOLATE Pkg. 29c
(Pre-Summer Special. Regularly 39c)

Low Everyday Price
DIXIE OLEO Lb. 31c

KEYKO OLEO lb. 33c

Sweet Cream in ¼ Lb. Sticks
MEADOWGOLD BUTTER . Lb. 79c

MARKET SPECIALS

For An Economical Meal . . .
Serve Chicken and Dumplings

Lb. Tray—Stewing Cuts of
YOUNGBLOOD'S FRYERS . . . 33c

Decker's Tall Korn
BACON lb. 47c

Jasmine Pure Pork Roll
SAUSAGE 1 lb. 39c

Heart of Texas
FRYERS lb. 59c

Kraft's Cheese Food
VELVEETA 2 lb. box 89c

SEA FOODS

Large Select
OYSTERS pint 89c

JUMBO SHRIMP lb. 89c

Fresh Fish Arrive Noon Wed.

Freshly Ground
GROUND BEEF lb. 59c

Loin End Cut
PORK CHOPS lb. 49c

Grade AA Veal or Beef
SQUARE CUT ROAST lb. 78c

Fresh Fruits and Vegetables

Texas, Clean Bunches
CARROTS bunch 3c

Home Grown
RADISHES bunch 5c

Hard, Green
CABBAGE lb. 5c

Jumbo, No. 4 Size Firm
LETTUCE 2 heads 35c

Beautiful New Crop—White Wax or
BERMUDA ONIONS lb. 10c

Genuine Calavo—42 Size
AVOCADOS 2 for 25c

FROZEN FOODS

12-Oz. Pkg. Snow Crop
STRAWBERRIES pkg. 39c

6-Oz. Cans Snow Crop
ORANGE JUICE 2 cans 43c
(Everyday Price)

Birdseye
COD FILLETS lb. 39c

Worth the Difference—Sanitary
DELUXE ICE CREAM pint 28c

Specials for Friday and Saturday — May 4th & 5th

Southside Food Market

We Reserve the Right to Limit Quantities

More Duchesses, Page Six