

Mrs. Porter To Head Girl Scout Area Council

The Girl Scout Area Council in a recent meeting named Mrs. Holland Porter as president for the coming year. Mrs. Porter and the other officers, Mrs. Leonard Walker, vice president; Mrs. Morris Williams, secretary; U. M. Alexander, Jr., treasurer, and Mrs. I. G. Adams, registrar, will take office on June 1.

The meeting, presided over by President Mrs. Fred Elliott, an annual Council meeting for the area.

Mrs. R. E. Patterson, day camp chairman, announced that the Brownie and Intermediate Day camp would be held this year at Kiwanis Park in College Station. The site has been changed to the park from the Girl Scout House because of lack of space, Mrs. Patterson said. A camp folder with detailed information regarding these day camps, to be held from June 11-15, 3:30 until 7 p.m., will be distributed soon, Mrs. Patterson said.

The Established Camp, to be held for intermediate and senior Scouts, will be conducted June 28 to July 7 at Camp Arrowmoon. Detailed information on this will be given to Girl Scouts as soon as all plans are completed.

Mrs. A. T. Ball, grounds chairman for the Girl Scout House presented the idea that the Dad and Daughter work day, held this year in March, be made an annual affair to be held each year in the Spring. This suggestion was put in the form of a motion and passed by the council.

Mrs. G. G. Gibson, reporting for the Nominating-Membership committee, presented the following names to be approved as new members of the board of directors: Mrs. H. L. Heaton, Mrs. John Delaplane, Mrs. Leonard Walker, J. D. Martin and R. T. Price.

The Nominating-Membership committee is composed of new members Mrs. Morris Williamson, chairman, Mrs. Henry Mayfield and Mrs. G. G. Gibson.

Art Gallery Slates Exhibit In MSC Soon

The art gallery committee is sponsoring an art exhibit on works of prominent Texas artists in the MSC April 18 to May 1, Mrs. Ralph Terry chairman of the committee announced today.

The pictures to appear in the exhibit will be some of the finest work done by Texas artists, Mrs. Terry said. Twelve pictures of local artists will also appear in the exhibit.

Contributions of outside work are being given by the Texas Fine Arts Association in Austin. This association has a total membership of between 400-500 distinguished artists of Texas.

Heading the list of artists are Alice Naylor, William Lester, Robert K. Reel, Margaret Pace, Janet Turner. Many other well known painters throughout the state will be present.

The gallery showing will include oils, water colors, and prints. People interested in seeing the exhibition are invited to one of the finest showings yet presented by the gallery group, Mrs. Terry concluded.

Wandering Pledges



Policemen E. L. Odell (left) and B. A. Rose built a fire to warn eight cold, miserable pledges of a club at Abilene Christian College after they found them wandering on a lonely road near Abilene, Tex. They had been thoroughly doused with molasses and cornflakes and shampooed with new eggs and red paint. School authorities are investigating. Left to right, the boys are: Don Jackson, Ardmore, Okla.; Ben Cole, Dallas; Charles Wilson, Winslow, Ariz.; Gene White, Dierks, Ark.; Carroll Gregory, Dimmit, Tex.; Ronald Bailey, Bowie, Tex.; Lewis Duncan, Lamasa, Tex.; Glenn Womble, Dallas.

Religious Parents Veto Transfusion--Blood Eating

Chicago, April 19—(AP)—A critically ill week old girl last night was given a blood transfusion which her parents opposed as "breaking the Lord's command."

The state obtained a court order clearing the legal way for the transfusion and hurried the baby to a hospital for the transfusion. The infant, Cheryl Lynn Labrenz, is suffering from an RH blood factor condition which Dr. Herman N. Bundesen, president of the Chicago Board of Health, said could cause her death "within hours" if not corrected.

The baby was given two ounces of blood in the first transfusion and doctors said her response would not be known for several hours.

Her parents, Darrel, 25, and his wife, Rhoda, 20, refused to the last to give their consent. Describing themselves as Jehovah's Witnesses, the two object to "blood eating" on religious grounds.

In family court today, Edwin T.

Breen, assistant state's attorney, turned to the father and asked him to reconsider his stand.

"No, it's out of my hands," the young father replied.

Then Breen put the same question to Mrs. Labrenz.

"We refused blood transfusions because we would be breaking the Lord's command," she said.

"If we break it it will destroy not

only our chances but the baby's chances of a future life."

Then Breen told Judge Robert J. Dunne that "the state's rights in this particular case, in saving the life of a child, transcend the parents' rights."

Judge Dunne agreed and appointed Col. Harry Hill, chief probation officer of the court, as the child's guardian. A guardian, Hill gave his consent for the transfusion and the baby was taken to Michael Reese Hospital.

The blood condition results from a conflict of RH factors that destroy the red blood cells. Transfusions, doctors say, are the only means for correcting the condition.

Doctors and city authorities had attempted unsuccessfully for several days to get the parents to consent to the transfusion.

The parents base their objections on several Bible passages, one of which is from chapter nine, verses four of Genesis, reading:

"But the flesh with the life thereof, which is the blood thereof, shall ye not eat."

They consider blood received in transfusions as eating of blood.

Contributions

(Continued from Page 1)	
L Sqn.	11.96
Co. 11	11.78
B TC	11.46
C Inf.	11.23
H Sqn.	10.90
A TC	10.08
D Inf.	10.05
I Sqn.	9.73
A Chem.	9.40
Corps Staff	9.23
B QM	9.16
A Eng.	9.07
F Sqn.	9.05
A Sqn.	8.92
A Sig.	8.74
B Comp.	8.60
A Inf.	8.55
B Inf.	8.10
A Comp.	7.22
A Field	7.00
C Comp.	6.90
K Sqn.	5.75
A QM	5.60
D Field	5.40
A Field	4.77
B Senior	4.17
Hart Hall (two units)	4.10
E Sqn.	3.72
B Sqn.	3.68
C Sqn.	3.47
C Armor	3.40
A Senior	3.32
G Sqn.	3.26
C Senior	3.00
D Sqn.	2.41
E Senior	2.00
B Armor	1.65
D Senior	.75
—Those units where 100% contributed.	

Not added in the over-\$800 total for last night's campaign is \$47 which has been received from faculty and staff members, Eubank said.

Major Leagues

(Continued from Page 3)

Koslo in the ninth yesterday to give Boston an 8-5 victory over the New York Giants.

Detroit: Early Wynn held Detroit to four hits yesterday to give Cleveland a 4 to 2 decision in 10 innings before 51,611 fans. It was Cleveland's second straight American League win.

Philadelphia: Washington staged a three run ninth inning rally for a 6-4 victory over Philadelphia's Athletics last night. Irv Noren tripled home a pair and Mickey Vernon's double accounted for the other as the Senators won their second straight from the A's.

Guion Hall

TODAY & FRIDAY

WYOMING MAIL

STARRING Stephen McNALLY - Alexis SMITH

with HOWARD de SILVA. A Universal International Picture

Architectural Club Sets Dinner Dance

Mrs. Virginia Rowlett, for 13 years the wife of an architect, led a round-table discussion on "What The Architect Expects of His Wife," at a recent meeting of the Architectural Wives Society. The leader is also secretary of Caudill-Rowlett and Scott, the architecture firm of which her husband is a member.

Present for the meeting were club members including four faculty wives.

At a business session, the annual spring dinner-dance was discussed and set for May 12 at the Maggie Parker dining hall in Bryan. Club members will entertain for their husbands and for single architecture students and their dates.

Refreshments at the meeting were served by hostesses Jo Pyle and Lillian Nixon.

'51 Campus Chest Benefit Show Set For Guion Friday

The Hockaday Glee Club and the Singing Cadets of Aggiefield will combine their talent at 7:30 Friday night on the stage of Guion Hall in a show for the benefit of the 1951 Campus Chest.

Members of the Hockaday Glee Club will furnish the first forty-five minutes of entertainment. Their program will include sacred and popular songs as well as spirituals, and will feature a soloist, a duo, a trio, and songs by the entire group.

The first number in the sacred portion of the program will be "Come Ye Faithful" by Williams. Others in this group are the traditional " Fairest Lord Jesus" and "Jesus, Joy of Man's Desiring" by Bach.

Rhythmic Spirituals
Moving to rhythmic spirituals, the girls from Hockaday will include "John Henry," "Nobody Knows the Trouble I See," and "Oh Freedom" in their program.

The next portion will feature the duo and trio singing popular numbers such as "Too Late Now" from "Royal Wedding," "Make Believe" and "Who" by Jerome Kern, and "So In Love" from the show "Kiss Me Kate."

Singing more popular songs, the glee club from Dallas will use selections from the music of Cole Porter, Sigmund Romberg, Jerome Kern, and Richard Rodgers. Typical selections from this group are "Night and Day," "Smoke Gets in Your Eyes," and "With a Song in My Heart."

Aggie Music Makers
The music makers from A&M are to furnish the music for the last thirty minutes of the Campus Chest show, singing some of the popular songs from their repertoire. "Joshua Fit de Battle," the ever popular spiritual, is the first number by the cadets.

"Where in the World" will be

PALACE

Bryan 2-8879

NOW SHOWING

MAYNARD PERCY
MAIN KILBRIDE

WANDA MA and PA KETTLE
BACK ON THE FARM
IT'S ALL NEW!

with RICHARD LONG - MEG RANDALL - RAY COLLINS

FRI. NITE PREV. 11 P.M.

Starring
Bill Mauldin's
Up Front

with DAVID WAYNE
and TOM EWELL
"Willie"

with MARINA BERTI - JEFFREY LYNN
A UNIVERSAL INTERNATIONAL PICTURE

QUEEN

NOW SHOWING

He's LOADED...with Laughs

James STEWART
with harvey

with JIMMY D. BRUNNEN
"Jiminy's pet"

SAT. NITE PREV. 11 P.M.

BOB'S NEW
DAMON RUNYON
LAUGH
RIOT!

DAMON RUNYON'S
The LEMON
DROP KID
starring BOB HOPE

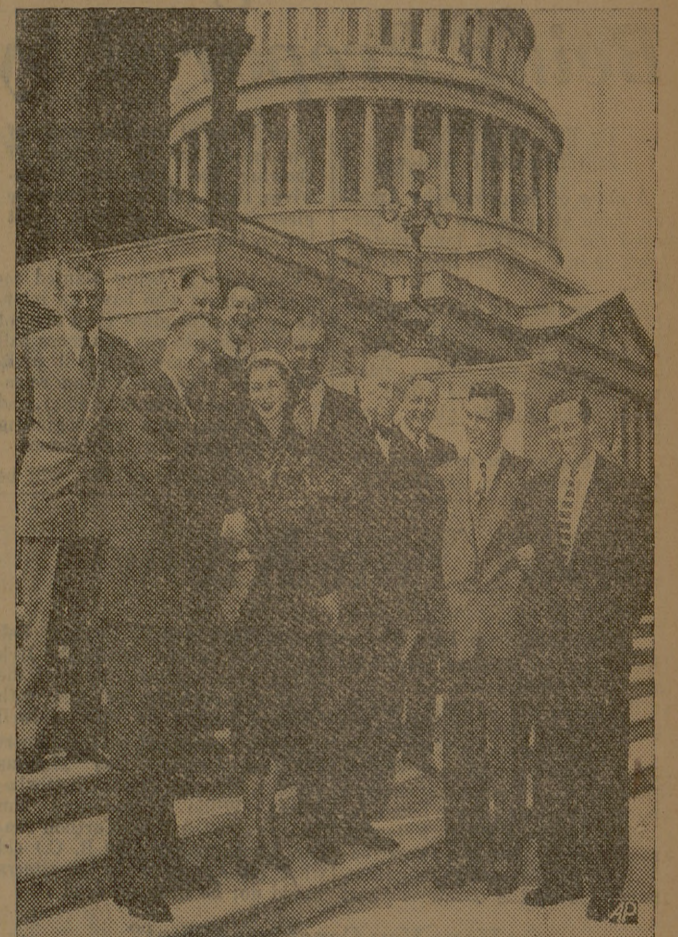
with MAXWELL - NOLAN - DARWELL

A Paramount Picture with
ANDREA KING - FRED CLARK
HARRY BELLAVER
Produced by ROBERT L. WELCH - Directed by SIDNEY LAYTON

VICTOR MATURE
TERRY WILLIAM
MOORE - BENDIX

NEWS - CARTOON

Roses for Jeannine



Former Aggie Sweetheart and now Maid of Cotton Jeannine Holland of Houston receives flowers from members of the Texas delegation on the steps of the capitol in Washington. Left to right; front, Rep. Albert Thomas presents the bouquet to Miss Holland; Sen. Tom Connally; Reps. George Mahon and Lloyd Dentsen, Jr. Rear; Reps. Homer Thornberry, W. R. Poage, John Lyle, Jr., J. Frank Wilson and Clark Thompson.

Negro Extensioners To Have Short Course

A summer school for Negro extension workers will be held at Prairie View A&M College June 4-22 and \$2,800 has been made available for the school, Dr. E. B. Evans, president, said today.

The donors are the Hoblitzelle Foundation, \$2,000; The Progressive Farmer, \$400 and the Texas Gulf Sulphur Co., \$400.

SPRING GARDENS

Yes, Sir. Fresh SPRING vegetables are coming in, and at Prices you can afford to pay.

Medium Size Calif.
Avocados 2 for 25c

Tender Baby
Yellow Squash . . . lb. 10c

Smooth, Clean New Crop Calif. Long White
Spuds 5 lbs. 33c

Yellowstone Brand Baking Size—Idaho Russett
Spuds . 10 lb. mesh bag 45c

Giant No. 4 Size
Lettuce 2 heads 35c

Home Grown
Radishes bun. 5c

5's Carton—Firm Pink
Tomatoes each 17c

Combination Fancy and Extra Fancy—Medium
(125) Size
Winesap Apples . doz. 35c

150 (Large) Size Florida, Juice
Oranges doz. 45c

— ALSO —
Romaine, Corn, Endive
Fresh Strawberries, etc.

MARKET SPECIALS

Kraft's Cheese Food
Velveeta 2 lb. box 89c

Hormel's All Meat Assorted Cold Cuts
Lunch Meats lb. 55c

Hormel All Meat
Frankfurters lb. 55c

Decker's Tall Korn
Bacon lb. 47c

Grade AA Veal or Beef Brisket
Stew Meat lb. 43c

FOR AN ECONOMICAL MEAL—SERVE . . .
Chicken and Dumplings

Assorted Stewing Cuts of YOUNGBLOODS
Fryers lb. 29c

Heart o' Texas
Fryers lb. 63c

Jasmine Pure Pork
Roll Sausage lb. 33c

Grade AA Veal or Beef Square
Shoulder Roast . . . lb. 75c

— EACH WEDNESDAY NOON —
Fresh Fish - Shrimp
Oysters

FROZEN FOODS

Low Everyday Price—½ Gallon Lilly
Mellokreme each 65c

Low Everyday Price—6-Oz. Cans Snow Crop
Orange Juice . . . 2 cans 43c

12-Oz. Snow Crop
Strawberries pkg. 39c

Birdseye
Green Peas pkg. 25c

GROCERIES

Colored Quarters Dixie
Colored Oleo lb. 33c

¾-Oz. Keyless American
Sardines 2 cans 15c

Cheaper Than Pink Salmon. Medium—Flat Can
Silver Bright
Red Salmon 2 cans 75c

Low Everyday Price—Kraft's Salad Dressing
Miracle Whip qt. 67c

Tall Cans Armour's Dash
Dog Food 2 cans 27c

For the Bigger Dogs—50 Lb. Bags Gaines
Dog Meal each \$5.75

Vacuum Pack Admiration
Coffee lb. can 85c

Low Everyday Price—Colored Quarters
Keyko Oleo lb. 31c

Pre-Summer Sale—Semi-Sweet Baker's
8-Oz. Package
Dot Chocolate 29c

5 Lb. Bag Kimbell's
Best Flour each 39c

39c Value—Most Economical Meat—Libby's
7-Oz. Can—(Ready to Serve—No Waste)
Veal Loaf can 25c

Honest Brand—Regular Cans
Vienna Sausage . . . can 10c

12-Oz. Swift's Spiced—Prem
Luncheon Meat . . . each 47c

3 Cup Size—Large Pieces—Low Everyday Price
10½-Oz. Cello
Shelled Pecans 95c

No. 1 Spanish—1 Lb. Cello
Shelled Peanuts 25c

Crisco 3 lb. can 99c

All Flavors Gelatin
Jello Desserts . . . 3 for 25c

Popular Brands
Cigarettes . . . carton \$1.86

No. 2½ Cans Libby's Y.C.
Halves Peaches can 29c

No. 2 Cans Kimbell's Diamond Brand
Pinch 2 cans 27c

Low Everyday Price—All Brands—Pasteurized
Milk ½ gal. 43c

In Wax Wrapped Compartments. Sunshine Krispy
Crackers box 27c

We Reserve the Right to Limit Quantities

Southside Food Market

Specials for Friday & Saturday - April 20th - 21st

The Exchange Store

Proudly Presents
SHEAFFER'S

new TM*

Sheaffer's TM has just arrived. The only really thin Model, Sheaffer's TM gives unbelievable comfort and convenience. Has one-stroke Touchdown filler, cylindrical 14K gold point, streamlined innerspring clip. See them today!

Sovereign TM \$8.75
Statesman TM \$10.00
Valiant TM \$12.50
Sentinel TM \$15.00

* THIN MODEL

THE EXCHANGE STORE

"Serving Texas Aggies"