

Casserole, Green Salad Is Basis for Easy Menu

A casserole, easy and delectable, forms the backbone of today's menu. The dish is called Farm Supper, but it is as welcome in the urban home as in the rural one. With the casserole, based around pork chops, goes a green salad, a fresh vegetable and a quick dessert, bread and beverage. The main dish and the dessert can be prepared beforehand.

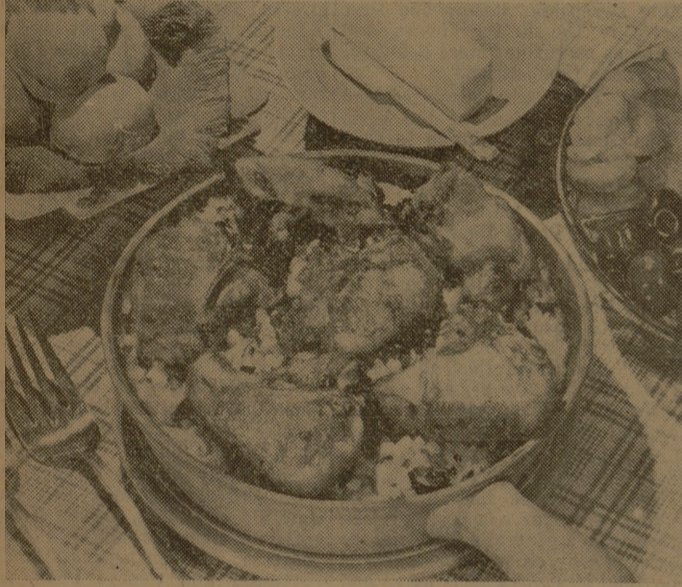
Farm Supper
Tossed Green Salad
Buttered Broccoli
Quick Cupcakes
Bread
Beverage

For the casserole dish, mix to-

gether 1 package frozen or two cups fresh cut kernel corn, 1/2 teaspoon salt, 1/4 cup minced green pepper, 1/4 cup chopped ripe olives. Place a layer of this mixture in a greased baking dish. Sprinkle with 1/4 cup coarse cracker crumbs and dot with margarine. Put on another layer of the corn mixture and sprinkle with another 1/4 cup cracker crumbs. Dot with margarine. Mix together 2 eggs, beaten, and 3/4 cup milk. Pour this over the mixture in the casserole. Season 6 pork chops with salt and pepper and arrange on top of this dish. Bake in 325 degree (medium) oven for 45 minutes. Make 6 servings.

For the salad, we like to use everything green we can find in the refrigerator—lettuce for the base, mixed with chopped fresh spinach, a diced carrot, avocado, green pepper, tomato, tiny cauliflower buds, and fresh green onions. These salad greens may be varied according to what you have on hand and to the family's taste. Toss vegetables together in a salad bowl. Pour over this salad oil (use salad oil first, it clings to the vegetables that way), the juice of 1/2 lemon, salt and pepper. Place in refrigerator until serving time.

For the broccoli, use fresh or frozen. If fresh is selected, be careful that the stems are young and tender and the tops are not flowered out. Cook in water in covered



This "Farm Supper," a pork chop casserole, forms the basis for the menu today.

Luncheon in New Mexico



The committee for the Food Group meeting last week, featuring La Placita Inn, Albuquerque, New Mexico was composed of, left to right, Mrs. Ralph Terry, Mrs. A. M. Platt, Mrs. E. N. Pianta, Mrs. T. K. Chamberlain, Mrs. George Potter, Mrs. B. C. Doggett and Mrs. Thomas Kiem.

A&M Foods Group Visits Famous Inns For Luncheons

By VIVIAN CASTLEBERRY

A group of College Station women monthly dine in the country's most famous eating places. They can't really travel the distance to these famous restaurants, so they bring the restaurants here. They are the Foods Group of the A&M Women's Social Club, and once each month they meet in the First Christian Church, where for a time the atmosphere is that of the finest dining places in the country. If they want to have lunch at Antoinettes, they simply transform the church into Antoinettes and serve a luncheon in keeping with the bill-of-fare offered in New Orleans. They did recently.

Visit Seven States
They also have dined in past months at Bit of Sweden in Los Angeles, at San Jacinto Inn in Houston, at Williamsburg Inn in Williamsburg, Virginia, at Toll House Inn in Whitman, Mass., and last week at La Placita in Albuquerque, New Mexico. Before the year is over they will have traveled to Detroit, Mich., for luncheon at Dearborn Inn and to Stillwater, Minnesota for a festive occasion at Lowell Inn.

The Foods Group numbers about 60 members. It was reorganized about six years ago as an interest group from members of the A&M Social Club. The club got its start about the mid-1930's, but was disorganized during the war. Its present officers are Mrs. Raymond Reiser, president; Mrs. R. F. Bruckhart, vice president and program chairman; Mrs. Royce LeRoy, secretary-treasurer; Mrs. Ray Oden, reporter, and Mrs. W. F. Adams, membership chairman.

Work! Work! Work!
While the Foods Group is a lot of fun, any one of its members will tell you that it is also a lot of work, for club members prepare the food and serve it, do the decorating for each luncheon, and attend all the details of a luncheon for 60 people. Each club member is on one committee per year to plan and execute these luncheons. Theme for the programs this year has been Famous Inns in the United States. Previously the group has studied foreign foods, party fare and a la carte, among other things. Next year they will have a new theme and will concentrate on other subjects. But always they will be mainly interested in food. Often in preparing these meals, the ladies are able to use the actual recipe from the inns which they are studying. Sometimes the res-

taurants will not divulge their food secrets and on these occasions the members copy the menus and recipes as nearly as possible. At each club meeting one of the members of the committee tells something about the inn at which that day's luncheon is served. "Very often," says Mrs. Reiser, "we are fortunate enough to have a lady with us who either has lived near the restaurant, or has dined there. On such occasions we are able to get a first-hand report of the restaurant."

Mustang Exes Slate Dinner Monday Night

College Station and Bryan SMU-exes will convene about 30 strong Monday evening at 7 p.m. for a dinner in the dining hall of the MSC. The gathering will be in connection with the Mustang Corals which are held throughout the country on or around March 24, which is SMU Founder's Day.

In charge of arrangements for the local Corral are Mrs. Frank Powell, Meredith Gravens, Mrs. Elmer Elkins and the Rev. Robert Sneed. Tickets will be \$1.25 each. Mustang alumni and their husbands, wives or dates are invited. Reservations should be made with Mrs. Elkins at 4-5374, with Mrs. Powell at 2-7400, or with Mr. Cravens at 2-1324 by noon Friday. "We are making allowances for a few late registrants," the Rev. Sneed said. "All Mustang exes are invited to attend this get-together," Mrs. Powell said. "If we have not contacted all the Mustangs of this area, we should be very grateful if they would call us."

At the Monday dinner the Rev. Frank Boutwell, '44, pastor of St. Paul Methodist Church, Bryan, will serve as master of ceremonies. Present for the occasion will be SMU executive secretary, George Bushang, who will assist the local group in the organization of an alumnae chapter and show colored slides of homecoming festivities last November. Local SMU-exes will be joined by Mustangs from Hearne, Caldwell, Navasota, Calvert and other surrounding towns, Mrs. Powell said. "Those ex-students are especially urged to attend and help make the meeting successful," Mrs. Powell added. Alumnae from Kidd-Key College, forerunner of SMU, are extended an invitation to be present at this meeting.

Dr. Wiley Is Main Speaker

At a luncheon meeting Saturday members of the local AAUW and TSCW ex-students heard Dr. Autrey Nell Wiley, head of the TSCW English department speak on "A Question of Time." The meeting marked the annual luncheon of members of the American Association of University Women. The College Station-Bryan group was joined for the occasion by members of AAUW in Madisonville. Mrs. John G. McNeeley, chairman of the fellowship funds committee and Mrs. C. F. Richardson, chairman of the social committee were in charge of arrangements for the meeting. Dr. Wiley told her listeners that a person's ability must be the first consideration in choosing applicants for positions. During the war, she said, women reached their highest status in this country. She said that in years of peace women have lost much of their gains.

From the Women's Desk

Wives, Daughters Ready For Easter

By VIVIAN CASTLEBERRY
Battalion Women's Editor

As these words get jotted out your way, students, their wives, profs and their wives and all other College folk are winding up what business they can before Spring holidays. This afternoon when five o'clock whistles blow, cars will head out from all directions homeward bound.

Come Sunday morning the EASTER PARADE will see these those uniforms dolls in all colors of the rainbow as Texas Aggies and their wives and dates head churchward.

Douthitt and Elaine Lester are too far away to be going home for Easter, but they'll put a doll of their own in the Parade when cherubic curly-haired Suzanne Lester comes out in her pink dotted swiss. Elaine will be the latest word in Spring fashion in navy and white . . . Betty and Aaron Campbell will see Easter morning dawn in Hillsboro, and later Betty will make the Easter parade in a two-piece brown dress with brown and white spectators and other accessories of crisp chalk white.

It will be Houston on Friday for the Darrow Hoopers where Darrow will participate in a track meet. After the sporting event, they'll go to Fort Worth to their homes. There tiny brunette Jeannine will take the spotlight front and center in a navy blue dress with pink accessories and a confection of a hat done of pink flowers . . . Martha and Ray Falke will be visiting Ray's folks in Temple for the weekend, and Martha plans to join the church crowd in her new mauve suit with black accessories.

Tall model-type Marilyn Gower and her husband, Bobby, will be Spring vacationing in Port Arthur. On Sunday Marilyn will make the Easter parade in a pink moire taffeta suit with all-lavender accessories. . . . Thelma and Elmer Elkins will spend Easter in Big D and on Sunday Mrs. E. will be attired in a pink linen suit with navy blue accessories. Her tiny navy hat will feature a double veil with velvet flowers.

Judy and Karen Davis will steal the Easter show from Peggy, their mom, when they go out in their pretty dotted swiss hoop skirt dresses. Karen's is yellow and Judy's is blue. . . . As soon as classes and work is over today Mary and (See WOMEN'S DESK, Page 6)

SLOGAN WINNERS

ARVIN or DINUBA? WHICH SHALL IT BE?

1st. prize of \$10 in free groceries goes to Mr. L. S. Paine. Other prizes of \$1 each in free groceries go to the following: Melvin S. Brooks, Daniel Russell, Dixie Southern and Mrs. W. M. Dowell. Because of the fact that so few people will be left here this Easter weekend, significance of the slogan will be explained next week.

● GROCERIES ●

- New Low Everyday Price.
- 6-Oz. Cans Snow Crop Frozen
- Orange Juice . . . 2 cans 43c**
- New Low Everyday Price—Colored Quarters
- Keyko Oleo lb. 31c**
- Popular Brands
- Cigarettes Cart. \$1.86**
- 3 Lb. Carton Mrs. Tuckers
- Shortening each 93c**
- No. 2 1/2 Cans Libby's
- Fruit Cocktail . . . each 37c**
- 46-Oz. Cans Kimbell's
- Grapefruit Juice, 2 cans 45c**
- Take Your Choice—4 1/2-Oz. or 10-Oz.
- Tomato Puree . . . each 5c**
- Fancy Small Blue Lake Moonrose—NO. 2 Cans
- Whole Green Beans, 2 - 43c**
- 51c Value—No. 300 Cans Gebhardt's
- Plain Chili can 43c**
- No. 300 Cans Gebhardt's
- Tamales can 15c**
- 31c Value—Big 12-Oz. Jar Whole—PREMIER
- Sweet Pickles jar 27c**
- 46-Oz. Cans Libby's
- Tomato Juice can 25c**
- No. 300 Cans Premier Fancy
- Pork and Beans . . . can 10c**
- Crisco 3 lb. can 97c**
- Fresh, U.S. No. 1 Spanish—Lb. Cello
- Shelled Peanuts 25c**
- No. 2 1/2 Cans Rosedale
- Bartlett Pears can 39c**
- 53c Value—12-Oz. Luncheon Meat
- Armour's Treet . . . can 47c**
- 1 Lb. Pkg. Admiration
- Coffee lb. 83c**
- 50 or 60 Watt Westinghouse
- Light Bulbs 3 for 35c**
- Best Buy by Analysis—Prince—Regular Can
- Dog Food can 10c**
- CASE OF 48 CANS \$4.65
- 15-Oz. Carton Del Monte
- Seedless Raisins . pkg. 27c**
- Large Box
- Ivory Snow each 29c**

● MARKET SPECIALS ●

- Jasmine Pure Pork
- Sausage lb. 33c**
- Decker's Tall Korn
- Bacon lb. 47c**
- Jasmine—Sliced
- Big Bologna lb. 45c**
- Kraft's Cheese Food
- Velveeta 2 lbs. 93c**
- Grade AA Square Cut
- Shoulder Roast . . . lb. 75c**
- Grade AA Brisket
- Stew Meat lb. 33c**
- Heart o' Texas
- Fryers lb. 65c**

EASTER HAMS

- No. 1—Whole lb. 66c
- Butt End lb. 69c
- Shank End lb. 63c
- Ham Hocks lb. 35c

ARRIVING EACH WEDNESDAY NOON

Fresh Fish - Shrimp Oysters

● FRESH PRODUCE ●

- U.S. No. 1 Clean Calif.
- Spuds 5 lbs. 29c**
- For Economical Food—Nebraska
- Red Potatoes . 10 lbs. 29c**
- No. 5 Size Calif.
- Lettuce 2 heads 19c**

● FROZEN FOODS ●

- Frozen, Honor Brand
- Broccoli pkg. 29c**
- Frozen, Honor Brand.
- Green Peas . . . 2 pkgs. 49c**

Southside Food Market

WE RESERVE THE RIGHT TO LIMIT QUANTITIES

SPECIALS FOR FRIDAY & SATURDAY MARCH 23rd & 24th

ARVIN OR DINUBA? WHICH SHALL IT BE

It's GREATER

Than You Think!

- FOR EASTER, take home your strong enthusiasm for Texas A & M.
- BRING BACK a promise, from a high school senior who will be graduated this June, to enroll in A & M this Summer or next Fall.
- THAT'S ONE of the finest things you can do toward helping New Students, Former Students, A & M and yourself.

EACH ONE REACH ONE

