

os
thy
of even nor-
the ability
to the line
factor var-
Some peo-
ple are in-
terested in
seeing to
their persons
have over an
area
ry with the
decreases in
the speed of
running or
ferred to a
uses a per-
move fur-
increases.
emely high
dom able to
ht angle is
the vision is
is another
that often im-
terwise keen-
ed that you
seeing from
angle allows
and distance.
fail you and
is lost.
es that re-
a social cal-
es over
ful one when
ain combine.
your vision
blindness, of
n vision de-
ple of a de-
of us—the
otion un-
ne of vi-
s your only
f an object
ward you.
ossible to
is variable
But every-
is of oncom-
g openings of
large to ad-
right head-
our pupils to
when the car-
tially blind
again ad-
ght. That's
ch the right
approaching
alities of
r, what you
54c
35c
65c
43c
10c
15c
15c
7c
27c
35c



D. W. Williams, president of the Southwest Conference and district representative for the National Collegiate Athletic Association is one of the 17-man council now in Dallas. It will be the responsibility of Williams and his sixteen associates to see that Article III of the NCAA's Constitution and Executive Regulations (The Sanity Code) will be so changed as to subdue the cries of many institutions, that under the present Code rules, it is impossible for their school to comply.

Debated Sanity Code Reviewed for Public

This week in Dallas, one of the largest meetings of the National Collegiate Athletic Association has been taking place. At the meeting various questions between the conferences have been settled and others brought up.

Perhaps one of the most talked of questions that is receiving serious thought at this meeting, as it does at all meetings, is the famed "Sanity Code". This code may be killed or given further support at the meeting.

We believe that the student body of A&M and others affected by this code, directly or indirectly, should know the real "Sanity Code". Below is a re-print of the "Sanity Code" from the NCAA's constitution.

Tomorrow, The Battalion will present the facts of the Southwest Conference's stand in the meeting, and a further explanation of the NCAA.—The Sports Staff.

ARTICLE III—NCAA SANITY CODE

Principles for the Conduct of Intercollegiate Athletics

Section 1. Principle of Amateurism. An amateur sportsman is one who engages in sports for the physical, mental or social benefits he derives therefrom, and to whom the sport is an avocation. Any College athlete who takes or is promised pay in any form for participation in athletics does not meet his definition of an amateur.

Section 2. Principle of Institutional Control and Responsibility. The control and responsibility for the conduct of both intercollegiate and intramural athletics shall, in the last analysis, be exercised by the institution itself.

Section 3. Principle of Sound Academic Standards. Athletes shall be admitted to the institution on the same basis as any other students and shall be required to observe and maintain the same academic standards.

Section 4. Principles Governing Financial Aids to Athletes. Financial aids in the form of scholarships, fellowships or otherwise, even though originating from sources other than persons on whom the recipient may be naturally or legally dependent for support, shall be permitted without loss of eligibility.

(a) If approved and awarded on the basis of need by the regular agency established in the recipient's institution for granting of aids to all students, provided, however, that the aid thus awarded shall not exceed the amount of tuition for instruction and for stated incidental institution fees, or

(b) if approved and awarded on the basis of qualifications in which high scholarship on the part of the recipient is the major factor and such award is made by the regular agency established by the awarding institution for the making of such awards, provided, however, that the existence of such scholarship, fellowship or other aid and its terms are announced in an official publication of such institution, or

(c) if awarded on the basis of qualifications of which athletic ability is not one, and the existence of such scholarship, fellowship or other aid and its terms are announced in an official publication of the institution.

Any student receiving aid permissible under (b) or (c) shall, however, not be awarded aid under (a) except to the extent that the aid awarded him under (b) or (c), or both, falls short of that permissible under (a).

In all cases the agency making the award of aid shall give the recipient a written statement of the amount, duration, conditions and terms thereof.

The acceptance of financial aid not permitted by the provisions of this section shall render the recipient ineligible for intercollegiate athletic competition.

(d) Any scholarship or other aid to an athlete shall be awarded only through a regular agency approved by the institution for the granting of aid to all students.

(e) No athlete shall be deprived of financial aids permitted by paragraphs (a), (b) and (c) of this section because of failure to participate in intercollegiate athletics.

(f) Compensation of an athlete for employment shall be commensurate with the service rendered.

(g) No one shall be denied student aid because he is an athlete.

(h) Nothing herein shall, however, be construed as a disapproval of indirect aids in the form of benefits reasonably incidental to actual participation in intercollegiate athletics, such as medical attention, meals on sanctioned trips, and during officially-sanctioned practice periods while the institution is not in session, and one meal per day while on the home campus during the season of the sport in which the recipient is engaged.

Section 5. Principle Governing Recruiting.

(a) No member of an athletic staff or other official representative of athletic interests shall solicit the attendance at his institution of any prospective student with the offer of financial aid or equivalent inducements. This, however, shall not be deemed to prohibit such staff member or other representative from giving information regarding aids permissible under Section 4.

(b) No member institution shall, directly or through its athletic staff members or by any other means, pay the traveling expenses of any prospective student visiting the campus, nor shall it arrange for or permit excessive entertainment of such prospective student during his visit there.

(c) No member institution shall, on its campus or elsewhere, conduct or have conducted in its behalf any athletic practice session or test at which one or more prospective students reveal, demonstrate, or display their abilities in any branch of sport.

R. A. Downard Gets San Antonio Job

R. A. Downard, field instructor for Texas Engineering Extension Service, has resigned to accept a position in San Antonio. He will be management engineer for the Frederick Sales Company.

He joined the Texas Engineering Extension Service staff in April, 1949. He developed and did extensive supervisory training work with the lumber companies and other industries of Texas.

Left Always Right For Pedestrians

Do you know when right is wrong?

It's when you are walking on the highway, says the Texas Safety Association. If you are doing any hiking, remember that you should walk on the left-hand side of the road, so you can watch the approaching cars on your side.

In the catechism of safety, there is only one answer—walk with caution, courtesy and common sense!

'Mural News

By JOE BLANCHETTE

The playoffs in intramural football will begin on Friday according to Barney Welch, Intramural Director.

In the opening round of the playoffs E Infantry will oppose A Engineers; A Vets will tangle with A QMC; A Signal will engage B Engineers; and A Infantry will battle a foe to be decided today.

Football

H AF eliminated K AF from contention in League E by scoring two touchdowns in the second half and winning 13-0.

The H AF offense did not swing into low gear until the latter part of the first half. Buzz Kennedy was primarily responsible for the ground eating attack on the winning airman.

A hard blocking H AF line, spearheaded by Jerry King, thwarted all efforts of the K airman to break through and break up the H AF running attack.

Kennedy also threw some very effective passes which loosened up the defense so the H Flyers' runners could break through the line for impressive gains.

Although B TC controlled the ball the majority of the first half, they yielded possession of the pigskin in the second half of the contest to allow C AF to drive 55 yards for the winning TD.

Sonnenburg climaxed the drive by circling end for 10 yards and the six points.

Lyle Payne and Bob Insall were outstanding on the B Transport defense nailing runners before they had built up their running power and intercepting numerous C AF aerials.

A AF did not allow A Composite inside their 40 yard line as the airman stopped the Composite men, 14-0.

E AF drove deep into D Vet territory five times but were unable to cross the pay-stripe but twice, as the flyers scored a 12-0 win over the Vet company.

Horseshoes

The horseshoe playoffs will begin Friday with I AF pitching against C AF and the A Infantry team meeting E, F, A.

In yesterday's engagements, I AF stopped A QMC, 2-1; C Infantry edged past A Engineers, 2-1; C Vets won a split decision over A Transport, 2-1; B Engineers squeezed by B AF, 2-1; and D Infantry dropped A Signal, 2-1.

Wendell G. Horsley Earns BA Degree

Wendell G. Horsley, son of Mr. and Mrs. Wendell R. Horsley, 530 Walton Dr., was among the 600 students qualifying for degrees at the end of the autumn quarter of the University of Denver, it was announced today at the large Colorado school.

Battalion SPORTS

THUR., JAN. 11, 1951 Page 5

Cadet Confidence Will Determine Future Victories

By RALPH E. GORMAN
Sports News Editor

Southwest Conference fans have seen 15 cage battles reeled off since the beginning of the conference season, and many would assume that it should be relatively easy now to make a prediction or two in regard to the eventual outcome of SWC basketball.

But the "relative ease" gains with complexity after each game.

Coach Presley Askew's Arkansas Razorbacks... considered tops in the Southwest among the preseason dopesters, have taken an embarrassing tumble to a spot just over the cellar steps.

Up in Cowtown, the Christians of TCU were destined to compete only with Dan Suman's Rice Owls, and their battle would be for the warmth of the cellar, but they're seated at the throne today.

From Texas University came word that the Longhorns would do well to finish fifth among the SWC cage powers, and they now show a tie with A&M for second place.

That's only a few of the major miscues in attempting to predict another phase of athletics in our ramble-scrumble conference.

Coach John Floyd's Aggies and the Owls are the only members of the conference who are living up to expectations. In Houston there was no way for the Feathered Flock to get but up, as they finished the 1950 season in their poorest style of many a year.

Owls Offer Little Opposition

But they are choosing to remain in their last season's position and are offering little or no competition to other conference teams. They now show three losses in as many starts and are tied with Bill Henderson's Baylor quintet, while the cadets are holding onto their pre-arranged second place among the SWC powers.

The question posing in our Aggie partisan minds today is one that increased in prominence after Tuesday night's 55-53 overtime victory.

How Strong? ...

So now we have the question... "Just how strong are the Aggies?"

Prior to Tuesday night's contest in Baylor's Rena Marrs Gymnasium all hope of an Aggie defeat was forsaken in Bear circles and even Jinx Tucker, Waco sports scribe and loyal Bruin supporter, conceded a conservation six point victory to the Cadets.

Along with the team strength in-terrogative, Farmer supporters are wondering just what happened in the Bear-dominated first half and some four minutes of the final period.

It was during these first 24 minutes of Bear reign that the huddled cadets exhibited little of the cool confidence which they had displayed previously against the Owls.

Bears Keyed Up

Buddy Davis and John DeWitt were doing quite well in capturing their share of the rebounds, but it was on the trip back up the court and the attempted penetration of the Bear defense that the Aggies faltered.

Fans will agree that the Bruins were keyed up higher than Larry Isbell and Hal Riley on last Oct. 28, and momentarily nudged the Cadets from their usual balance of ball control.

Only for brief intervals during the first period did the Aggies find their station in the cage game and display their final game winning talent.

The rest enjoyed during the half-time and the conversation with Cage Mentor Floyd spelled the turning point for the Farmers, defeat for the Bears, and hair-raising thrills for a houseful of spectators.

In a matter of minutes after (See FLOYD, Page 6)

Against Aggies Saturday...

McLeod, Fromme Lead Frogs

By JIM ASHLOCK

A&M's quintet will be in for a tough forty minutes of basketball when they play host to the TCU Horned Frogs in DeWare Field House Saturday night.

Up to this time the Aggies stand undefeated in Conference play, downing Rice 51-39 and squeezing by Baylor 55-53 in a sizzling overtime contest.

"They're tough. They have a good ball team and a good coach, and the team that wins Saturday night will be the one that plays the best ball."

The content of the Frog five verifies Floyd's statement, since coach Byron "Buster" Brannon's team is loaded with veteran talent.

George McLeod, 6' 7" all-Conference star from Houston who paced his team in scoring last year, is improved over last year and is expected to be one of the sector's outstanding pivotmen.

Other returning lettermen will include captain-elect Harvey Fromme, James Knox, Ted Reynolds, Tommy Taylor, Bud Campbell, and Johnny Ethridge. Up from the fish team will be Richard Allen and Ken Miller, while two junior college transfers, Johnny Taylor of Paris JC and Bryan Kilpatrick of Kilgore JC, will also see action.

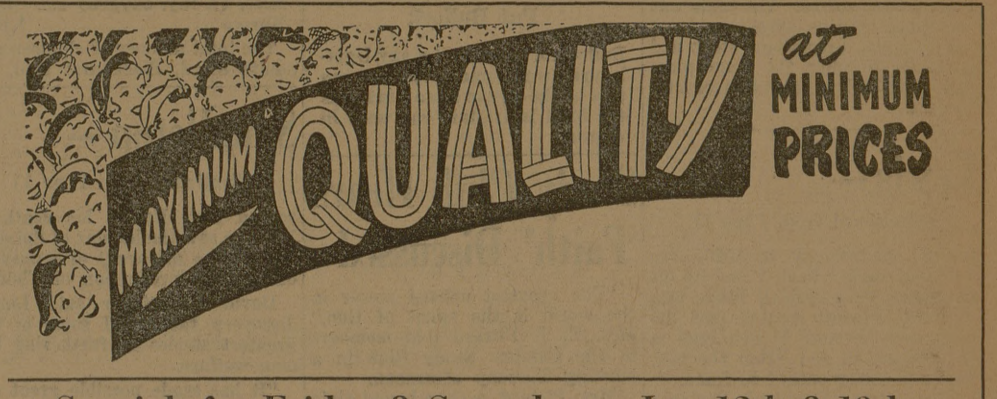
Fromme, starting at forward, is capable of dropping the ball through the hoop from any distance while Reynolds, the other forward, is at his best cleaning the backboards. Both Fromme and Reynolds are juniors.

Brannon has three sets of guards, but Johnny Swain and Ethridge will probably hold the starting berths. Both are small, but extremely fast and excellent ball handlers. Brannon can also call upon reserve guards T. Taylor, Campbell, Taylor, and Elliot.

TCU specialized in fast breaks, passing and breaking off their pivotmen.

McLeod is also dangerous due to his height and variety of shots, his favorite appearing to be the hook shot. But the Aggies style of play, emphasizing ball control and taking only the sure shots, has shown a trend to take some of the fire out of fast teams. This was disclosed in the Rice and Baylor games, in which the Aggies faced fast breaking teams.

In the game preceding the varsity game, A&M's freshman team (See FISH LOSE, Page 6)



Specials for Friday & Saturday — Jan. 12th & 13th

- SPECIALS •
- Texsun—46 Oz. **Grapefruit Juice . 19c**
- Hostess—VIENNA **Sausage . . 3 cans 25c**
- Hunts—2 1/2 **Peach Halves . . 29c**
- Pard **Dog Food 2 cans 25c**
- Texas Club—Unsweetened—46 Oz. **Orange Juice 25c**
- Pillsbury's—1 1/4 Lb. **Pancake Flour 15c**
- Charmin—60's **Napkins 2 boxes 19c**
- Kimbell's—12 Oz. **Strawberry Preserves . 31c**
- Kimbell's Cut—No. 2 **Green Beans 2 cans 27c**
- Tomato Puree . 4 cans 15c**
- Kimbell's Fresh—300 **Blackeyed Peas . 2 cans 25c**
- Campbell's **Vegetable Soup . 2 cans 25c**
- Vermont Maid—12 Oz. **Syrup 23c**
- Betty Crocker—20 Oz. **Devils Food Cake . . . 32c**

- Admiration **Coffee Lb. Pkg. 81c**
- Gladiola **Flour 5 lb. 43c**
- 1/2's **Bits O' Sea Tuna . . . 27c**
- FROZEN FOODS •
- Snow Crop—6 Oz. **Orange Juice . 2 - 39c**
- Snowcrop—12 Oz. **Strawberries 39c**
- Birdseye—14 Oz. **Spinach Leaf 23c**
- Birdseye—10 Oz. **Green Beans 23c**

- PRODUCE •
- California **Lettuce . . . 2 hds. 15c**
- Central American **Bananas 2 lbs. 19c**
- U. S. No. 1 California **Potatoes 5 lbs. 19c**
- Texas Marshseedless **Grapefruit 6 for 19c**

- MEATS •
- Lean Well Trimmed **Pork Chops . . lb. 49c**
- Armour's Dexter **Bacon lb. 43c**
- Armstrong's Famous **Bacon lb. 49c**
- Aged Wisconsin—From 500 Lb. Wheel **Cheddar Cheese . . lb. 55c**
- Lean—Meaty **Veal Stew Meat . . lb. 48c**
- Medium Select **Oysters pt. 79c**
- Dixon's **Wieners lb. 45c**
- Pork Loin **End Roast lb. 49c**

- SUNDRIES •
- Pepsodent—Giant **Tooth Paste 33c**
- Listerine—7 Oz. **Antiseptic 39c**
- Wiggins—Large **Milk of Magnesia . . . 33c**

COULTER DRIVE AT HIWAY 6

The Shopping Center

"FORMERLY BONEY'S"

Open 8 A.M. to 8 P.M. 7 Days a Week
Closed Sundays 1 P.M. to 4 P.M.

YEAR ROUND AIR - CONDITIONED FOR YOUR SHOPPING COMFORT

LARGE FREE PARKING AREA

We Reserve the Right To Limit Quantities



PARDON MY HASTE!

But I'm "makin' tracks". I'm anxious to pick up some of those fine bargains advertised in . . .

The Battalion

You can't beat the Batt for a shopping guide. Just about anything under the sun can be found for sale in their advertising columns. Wise shoppers "buy Batt" regularly.