

Aggies Continue As Top Scorers . . .

Mustangs, Bears, Steers Win

A&M proved that Southern Methodist wasn't the only team in the Southwest Conference that could travel through the air as well as on the ground in using a second half scoring spree to trounce TCU.

A good replacement for the talked-of Mustang tosser Fred Beners is Dick Gardemal, who completed eight of 13 attempted passes for 135 yards and two touchdowns helping raise A&M total passing yardage to 536.

In defeating the TCU Horned Frogs, 42-23, the Aggies broke all kinds of jinxes and also maintained the high scoring for the conference.

In the jinx department, the Cadet eleven won its first Southwest Conference game since '47 when they defeated Baylor, 24-0. On records Bruisin' Bob Smith jumped to the lead in conference scoring with 60 points, six more than were held by Randall Clay of TU at a similar time last year, and A&M scored the most points in a conference game since they defeated Arkansas, 41-0, in 1942 and hold a total of 204 markers in five games.

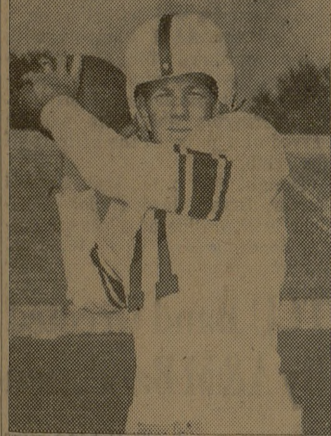
Southern Methodist, who used their exclusive rights on Kyle Rote playing him consistently through the game, defeated a bewildered Rice eleven, 42-21. The Texas Longhorns scored late in the fourth quarter then held Arkansas at bay to win 19-14.

Baylor became the fourth SWC

team to defeat Texas Tech, winning 28-12.

A&M continued to lead the conference in ground gained and began to push the Mustangs heavily on total offense with a barrage of completed passes. The Maroon and White gained 206 through the air and 280 on the ground against TCU.

TU, in defeating Arkansas, had trouble all the way. Byron Town-



Dick Gardemal

send was the Longhorns' star as he gained 144 yards in 25 carries. Rote carried 22 times for 150 yards against Rice, and Bruisin' Bob traveled 24 times for 146 yards, bringing his total to 593.

★ SMU 42, Rice 21 ★

The Ponies ran the Owls ragged scoring in every quarter and twice in each the second and fourth periods.

SMU struck for touchdowns the first two times it had the ball, then beat off a Rice comeback and rolled along easily as two pass-interceptions got a pair of quick scores.

The victory was the fifth straight for the Methodists, the nation's third ranking team this week.

For Rice, starting defense of its 1949 Southwest Conference championship, it was the first defeat in 13 games, its first conference loss since Oct. 1948.

Rote scored the first and third SMU touchdowns and paved the way for another as the Methodists relied most of the night on power instead of their anticipated aerial show.

Beners to Hawn

Beners connected with End Jimmy Hawn for the second Mustang score. Pat Knight and David Powell teamed to start the second half rout by returning a Rice pass all the way. Val Joe Walker intercepted another and raced to the next score.

The Mustangs' final tally came as Gene Roberts climaxed a 75

yard march with a smash from the 7.

Fullback George Glauser was the big noise for Rice, scoring on quick opening plays of 17 and 58 yards. Quarterback Vernon Glass passed for 49 yards to End Bill Howton for the other Owl tally.

Bill Sullivan made good on all six SMU conversions, as did Billy Wright on Rice's three.

Glauser Leads Rushers

Glauser's touchdown runs made him the night's leading ground gainer, netting 163 in 14 tries. Rote was second with 150 yards in 22 carries.

Beners had the edge over Glass in passing, completing 11 out of 17 for 108 yards. Glass completed five of 14 for 87 but had three intercepted. Only one toss by Beners was gathered in by Rice.

The Methodists' scoring drive were good for 68, 82, 61, and 75 yards. Powell traveled 20 yards for his score after taking a lateral from Knight, who has intercepted a Glass pass on the Rice 33. Walker took a pass intended for Rice and Bill Howton and moved untouched 16 yards.

Rice tried to sandwich a touchdown in between the first two SMU scores but failed. Benton Musslewhite, Mustang quarterback, to reduce its deficit to 7-14.

Frank Allen recovered on the SMU 17, and Glauser's touchdown explosion came on the first play.

Battalion SPORTS

MON., OCT. 23, 1950 Page 3

His second big run also was on the first scrimmage play after the Mustangs had been forced to punt for the first time midway in the third period.

Glass to Howton

Glass' pass to Howton came with five seconds left in the second period. It had been preceded by an SMU interference penalty that carried Rice from its 22 to the Mustang 49.

Rice made only three good threats that were halted. Taking the kickoff after SMU's first score, the Owls moved from their 23 to the Mustang 14 before losing on downs on the 18. The drive began as halfback Sonny Wyatt, through the line by 7 yards, lateraled to Glauser who raced to the visitors' 32 before being caught from behind by Halfback Ray Cleckler.

Rice In 2nd Half

Starting the second half like it intended to knot the count at 21-21, Rice moved from its 22 to the SMU 22 before being shoved back to the 30.

In the game's closing seconds Glass took to the air and shot the Owls 39 yards to the SMU 14 before time ran out.

The Mustang power plays were so effective Beners was not alerted until the last two plays before the second touchdown. By then a 15-yard penalty had set the Mustangs back. Beners' first toss to Johnny Champion got five yards and the second, to Hawn, got a score.

★ TU 19, Arkansas 14 ★

Texas, who meets the Feathered Flock of Rice this weekend, opened their SWC season with a calm and cool comeback over Arkansas with the showings of a champion. Ben Tompkins' passing and Townsend's running sparked the Longhorns attack.

Townsend scored two touchdowns as the Longhorns overcame in the fourth period a 14-13 lead posted by the Razorbacks. The Razorbacks seized a one-point lead with two and a half minutes left in the third period when Bob Cross intercepted a Texas pass on the Longhorns 41 and quarterback Don Logue plunged across the goal nine plays later from the 1.

Arkansas' George Thomason kicked the extra point, and it looked big to stunned Texas fans who recalled the Longhorns' 14-13 loss to Oklahoma last week.

TU Scores Early

But Texas, in a drive marked by a 24-yard pass from Tompkins to end Ben Procter and a 24-yard scamper by Townsend, scored at the opening of the fourth period in a 77-yard march which saw Townsend on the payoff end of a one-foot plunge across the goal line. 10 minutes into the first period.

The Longhorns opened the scoring 10 minutes into the first period when back Bobby Dillon raced 11 yards to cap a six-play march which netted 51 yards.

Texas' Billy Porter missed the extra point try but his kick was good early in the second period when Townsend punched across

from the one-yard line. The marker was set-up when Arkansas' Louie Schafele failed to get away a kick on his own 18, and Tompkins on the next play ran 17 yards to the 1.

Top Play of Day

But the top play of the day came midway in the second quarter when Arkansas' 6-foot, 2-inch Johnny Cole snared a Texas kick on his own 25, evaded a horde of

Gridiron Glance		Tex.	Ark.
First downs	18	10
Rushing yardage	216	131
Passing yardage	51	35
Passes attempted	8	8
Passes completed	4	4
Passes intercepted	1	7
Punts	4	7
Punting average	36.8	32.4
Fumbles lost	1	1
Yards penalized	35	50

Longhorn tacklers and raced down the sideline, with the entire team protecting him, for a 75-yard score.

★ Baylor 26, Tech 12 ★

Larry Isbell sharpened up for the Aggies this coming Saturday as he connected with his passes at desperate moments to lead the Baylor Bears to their third win of the season. The entire Baylor team became sharper and tougher in the second half to go ahead and win after what started out to be anyone's game.

Gridiron Glance		Bay.	Tech.
First downs	17	14
Rushing yardage	208	239
Passing yardage	163	82
Passes attempted	25	23
Passes completed	12	8
Passes intercepted	2	2
Punts	3	5
Punting average	36.1	34.1
Fumbles lost	0	1
No. of penalties	2	3
Yards penalized	10	25

Before bowing to Baylor, Tech had a brief moment of glory.

As 12,000 Baylor partisans sat glum, the Raiders drove 59 yards for a first period touchdown and their only lead of the day. J. W. Thompson went over from the four yard line for the score.

Then Tech was through on the scoreboard until the third period.

Three TD Lead

In the interim, Coach George Sauer's Baylor outfit went into a three-touchdown lead, and by the time halfback Bobby Close got away for a 76-yard touchdown run in the third period the Tech cause was hopeless.

Baylor scored a pair of touchdowns in the second period. Halfback James Parker cracked over from the two for the first one. Young Larry Isbell, the driving force in the Baylor backfield, hit Parker with a 22-yard pass for the second.

Baylor heaped on another touchdown four minutes into the third period, sending halfback Don Carpenter over from the one yard line. Close scored for Tech on the second play after the kickoff, but before the third period ran out fullback Richard Parma got his first touchdown as a Baylor collegian. It was a four-yard plunge.—Based on AP Reports.

—Beat Baylor—

Garmany Leads Cadet Harriers Over Texas U.

Led by junior star John Garmany, the Aggie cross country team completely outclassed the University of Texas Harriers last Friday afternoon over the Austinites' 2.6 mile course, winning by a score of 19-42.

So dominating were the Aggies that the only Longhorn to break into the Farmers' first five was C. A. Rundell, a junior college transfer who took 2nd behind Garmany. Right on Rundell's heels was Julian Herring and only a few yards back were Aggies Marshall Lazarine, Charlie Gabriel, and Charles Hudgins.

Garmany's time was a blistering 12:28 which is an average of 4:48 on each mile. So close were all the runners that the first nine men finished less than 20 seconds behind the winner.

Setting the pace all the way, Garmany ran a beautiful race, never letting Rundell get close enough to take the lead, although the two were fairly close all the way.

Herring showed signs of last year's form when he came from the last at the mile mark to take third, nipping Lazarine at the close of the race.

The Cadets next meet will be November 3rd against a strong Arkansas team. Arkansas is the Maroon and White's strongest threat for the title, and a win in November would help the outlook of the situation as to A&M's chances for capturing their third Southwest Conference title.

Garmany's time was 12 seconds faster than that of the winner from Oklahoma in the dual match two weeks ago between the Sooners and the Aggies at Norman. Coach Frank Anderson explained this saying, "The boys had not yet reached their top shape, and the Sooners held an edge on conditioning time."

—Beat Baylor—

Crucial TCU Moment



Photo by Battalion Chief Photographer Sam Molinary

Bobby Jack Floyd (32), TCU fullback, is stopped by Augie Saxe (46) for little gain in the TCU-A&M football fray here last Saturday. Coming up quick to help Saxe are Charley Hodge (87)

and Bobby Bates (55). A&M broke a three year home field conference jinx in defeating the Horned Frogs 42-23.

Ag Engineers Take Dallas Field Trip

Senior Agricultural Engineers made an annual inspection trip to Dallas, Monday and Tuesday Oct. 16 and 17.

Oct. 16 was spent at the State Fair, inspecting various farm machinery exhibits, a guide explained operation initial cost and cost of operation of the machinery.

Garmany's time was 12 seconds faster than that of the winner from Oklahoma in the dual match two weeks ago between the Sooners and the Aggies at Norman. Coach Frank Anderson explained this saying, "The boys had not yet reached their top shape, and the Sooners held an edge on conditioning time."

A tour was made over farms of the surrounding area and important conservation projects.

CLIP THIS AD!

The presentation of this ad entitles you to one wash and lubrication for only—\$1.50



Your Friendly Phillips 66 Dealer

GILBERT & BURT

1219 Highway 6 South

Phone 2-8333

Quion Hall

LAST TIMES TODAY

NOW ON THE SCREEN!

TECHNICOLOR

M-G-M's

ANNIE GET YOUR GUN

STARRING BETTY HUTTON HOWARD KEEL

10 SONG HITS BY IRVING BERLIN

LOUIS CALHERN - J. CARROLL NASH EDWARD ARNOLD - KEENAN WYNN

Directed by IRVING BERLIN

HERBERT FIELDS and DOROTHY FIELDS

Musical Numbers Staged by ROBERT ALTON

Directed by GEORGE SIDNEY - ARTHUR FREED

A METRO-GOLDWYN-MAJICA PICTURE

TUESDAY & WEDNESDAY

MITCHUM'S LATEST! IT'S HOTTER THAN JULY!

HOLIDAY AFFAIR

ROBERT MITCHUM - JANET LEIGH WENDELL COREY

Campus

TODAY thru WEDNESDAY

FIRST RUN

Features Start—1:44 - 3:48 - 5:52 - 7:56 - 10:00

ROBERT TAYLOR

DEVIL'S DOORWAY

Louis Calhern - Edgar Buchanan

NEWS - CARTOON

PALACE

TODAY thru WEDNESDAY

EVERYBODY'S WAITING FOR THEIR NEW MUSICAL!

M-G-M Brings on the Show

JUDY GARLAND - GENE KELLY

SUMMER STOCK

EDDIE BRACKEN - GLORIA DE HAVEN

MARGORIE MANN - PHIL SILVERS

with RAY COLLINS

M-G-M's SINGY, ZINGY, STAR-FILLED MUSICAL

Technicolor

QUEEN

NOW SHOWING

JOHNNY SHEFFIELD

Bomba - The HIDDEN CITY

SKYWAY

DRIVE-IN THEATRE

"MA AND PA KETTLE GO TO TOWN"

PAL HOLLOW GROUND

Your Best Blade Buy!

Shaves you better • Costs you less

PROVE IT YOURSELF AT OUR EXPENSE

Make this test. Don't risk a penny. Buy a package of PALS. Use as many as you wish. Then if you don't agree they're your best blade buy... more shaves, better shaves, at lowest cost... return the dispenser to us for refund of full purchase price. (If your dealer can't supply you, send us his name and address. Order type blades wanted and enclose payment. We'll reimburse dealer.)

Pal Blade Co., Inc., 43 West 57th St., New York 19, N.Y.

Fit your injector razor perfectly

PAL INJECTOR BLADES 20 for 59¢ 10 for 39¢ 6 for 25¢ (Trial Size)

PAL SINGLE and DOUBLE EDGE in ZIPAK dispenser 44 for 98¢ 10 for 25¢ 21 for 49¢

Single Edge Double Edge

ONE, TWO... OLD BLADE TO NEW

PAL single or double edge in regular packing, 4 for 10¢

Pal takes the Hout of SHAVING and leaves you a SAVING!

Campus Interviews on Cigarette Tests

Number 5...THE GNU



"I gnu the answers...but I wasn't talking!"

The debating team couldn't make much use of this non-talkative baby...but one look at his "literary leanings" tells you that tests don't buffalo him. Specially those tricky cigarette tests! As a smoker, you probably know, too, that one puff or one sniff—or a mere one-inhale comparison can't prove very much about a cigarette!

Why not make the sensible test—the 30-Day Camel Mildness Test. You judge Camel mildness and flavor in your own "T-Zone" (T for Throat, T for Taste) ...for 30 days. Yes, test Camels as a steady smoke and you'll see why...

More People Smoke Camels than any other cigarette!