

TCU Will Use Dutch's New Version of Offense

By AMOS MELTON
Director of Sports
Publicity—TCU

Ft. Worth, (Special)—The TCU football squad for 1950 will number around 58 players as the season opens. There are nine ends, 12 tackles, 12 guards, five centers, six quarterbacks, six fullbacks, and eight halfbacks.

The tentative starting team on offense will average around 194 pounds—199 in the line and 190 in the backfield. On defense, the prospective starting line will average 204 and the secondary around 182.

For the first time since L. R. "Dutch" Meyer assumed command in 1934, the TCU team will operate from something besides the Warner double-wing (with variations) as a basic formation.

After much thought and experimentation, the veteran little tutor came up with his own version of a "T-double wing" setup and gave it a thorough trial in spring training. The results were so satisfactory that Meyer announced his

return. They are Wilde, who hit 7 for 25 efforts last year for 175 yards and three touchdowns, and Dexter Bassinger, who made good 5 of 13 tries for 43 paces.

There are two untried tossers in Gilbert Bartosh and Duane Grissett. Bartosh is likely to alternate most of the season with Wilde as the top tosser.

Since the passing threat will be highly important to Coach Meyer's new "T-wing" formation, success or failure of the mound corps may be the deciding factor in the 1950 season. As yet, the throwing must be "proven."

The club's three top catchers, Morris Bailey, George Boal, and Jack Archer, graduated. Despite these losses, the receiving should be adequate.

Available Ends—Capable

Ends Billy Moorman and Wilson George, backs Dunn, Fowler, Jimmy Hickey, Morton, and Johnny Medanich have demonstrated

THE BATTALION
Page 6 THURS., SEPT. 7, 1950

Ag Baseballers Stronger; No Official Coach

Although the Aggie baseball team which placed second in the conference with a 9-5 record, losing three times to the powerful NCAA Champion, Texas University, once to SMU, and once to Baylor, is not expected to be the SWC champs this coming year, it will be stronger.

At the beginning of the 1950 school year the Aggies are without an official baseball coach. Athletic Director Barlow Irvin has announced that Perron Shoemaker, Fish coach is in charge of the Aggie nine until official action is taken by the Athletic Council.

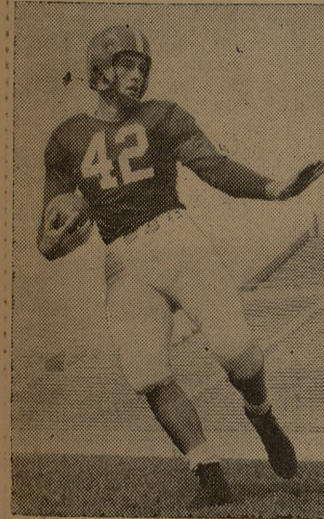
Last season's tutor Marty Karow resigned to take a similar post at his alma mater, Ohio State University.

Another loss from the team includes All-Conference centerfielder Wally Moon, who signed with the St. Louis Cardinal chain during the summer months.

Returning for this year's team includes All-Conference pitcher Pat Hubert, who won five, lost one in SWC play, and All-Conference shortstop Guy Wallace. Together with an all-around team and with another pitcher to help Hubert, the Aggies may win the SWC baseball crown which they last won in the early '40s.

Pitching support for Hubert may be produced in the form of Sam Blanton, Bob "Tank" Tankersley, Blanton Taylor, George Brown, and freshman hurlers from last year, Jack Brinkley and Bill Stirling.

Rounding out the returnees are Shug McPherson, Hollis Baker, Joe Ecrette, Yale Lary, Al Ogletree, Martin Hamilton, Lester Lackey, Hank Candelari, Joe Savarino, John DeWitt and top freshman prospects such as Charley Russell, Bill Munnerly, and Don Heft.



Dan Wilde
TCU Quarterback

1950 team will open with the new formation. The plan is an effort to combine the merits of the straight T and the double wing.

Returning Lettermen—24

There are 24 lettermen returning who, among them, have earned 40 monograms, contrast this with the loss of 17 veterans who had earned 51 letters, and it is easily seen that the team is, comparatively speaking, "green" especially at some of the key positions.

Several tentative starters, notably guard Tom Evans, fullback Bobby Jack Floyd, and halfback Malvin Fowler, have yet to play their first down to varsity football.

On the whole, the Frogs should have a bit more speed this season. With the departure of Lindy Berry, Dan Wilde is expected to come into his own. Other speedsters in the backfield are Johnny Dunn and Bobby Harding (Texas lass A high school sprint champion of 1948) at left half.

Big Malvin Fowler and Johnny Medanich on the right side can move equally as fast. For big men, John Morton and Bobby Jack Floyd at full move rapidly, and the line, while slightly smaller in spots, should be more mobile.

Only two moundsmen who have ever pitched in varsity competi-

Even With Doak Gone . . .

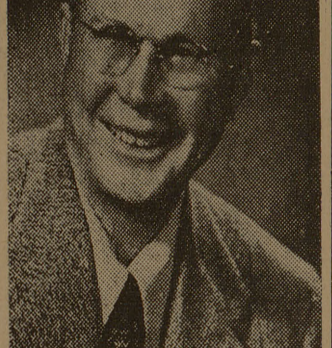
SMU Eleven Not Blue

By LESTER JORDAN
Director of
Athletic Publicity—SMU

Dallas (Special)—Although Doak Walker, Dick McKissack, Bobby Folsom, Jack Halliday, and other outstanding players who aided greatly in compiling SMU's great football record of the last three years are no longer on the Hilltop, there is little gloom in the Mustang camp as the Ponies prepare for the 1950 season.

H. N. Russell, who succeeded Matty Bell as head coach after the latter decided to devote full-time to his duties as athletic director, and his assistants put a fine-looking squad through an intensive spring drill and were encouraged by the spirit displayed by their proteges.

Coach Russell, who has been



H. N. Russell
SMU Head Coach

Bell's first assistant for five years, plans no radical departure in either the offensive or defensive patterns of the team and the players are already familiar with fundamentals of the system to be used by the Mustangs.

The Mustangs have some fine backfield offensive material in Kyle Rote, who scored three touchdowns against Notre Dame last year and who lead the Southwest Conference in punting, rushing, and touchdowns scored. Other offensive backfield material includes Johnny Champion, diminutive but speedy halfback, and Gene Robert, who lettered in 1948 but missed 1949 because of injuries suffered in an automobile accident.

Also Pat Knight, a big, blocking fullback; Henry Stollenwerk, a hard-hitting ball carrier; H. N. Russell, Jr., a smart field general and a superb pass catcher; Fred Benner, who is a passing specialist, and others among whom are Bill Forester, Benton Muslewite, Val Joe Walker, and other promising sophomores.

The loss of Co-captains Folsom McKissack, and Walker will be felt defensively as well as offensively, and the ability of the coaches to find capable men at the half-back and safety posts will determine to a great extent the success enjoyed by the Mustangs.

Bill Richards, who played a great defensive game against Notre Dame, Champion, D. C. Chancey, Ray Cleckler, Kenneth Duke, and Bill Crisler are among those who will be tried at the positions.

Available for the important post of linebackers are Dick Hightower, and I. D. Russell, who as sophomores last season impressed the critics with their deadly tackling. Sam Wood, James Dawson, Bill Fox, and Jim Landers should prove capable replacements.

No Platoon System

Coach Russell does not plan to follow the platoon system, but will use the best men both on defense and offense. Candidates for the end positions include Benny White, who played enough to letter last year; Bill Sullivan, who has lettered two years as a kick-off specialist; Bill Rippey, David Powell, Bob Hooks, and Jimmy Hawn, who were held out last season; Harry Dean, Jim Mahew, and Leland Mayo, 1949 freshman; and Leo Fikes and Robert Payne, squadmen last year.

Returning tackles are four lettermen—Neal Franklin and Charles Perry, who stood out in the closing games of the 1949 season, and Co-captain Bobby Collier and Bob Vann, who started on defense last year until benched by injuries.

Help will be given by Wayne Ligon, Bufard Partee, Ed Pettes, and Earl Walden of the 1949 frosh; Charles Chambers, and James Marion squadmen last season; and Bob Cadwallader, Cuba Holloway, and Hal Quinn, who have junior college experience.

The Mustangs lost five lettermen at guard, but the coaches were impressed by the spring work of Herschel Forester, a letterman; Ike Robb, a squadman; David Riley, Paul Turk, and Jmmie Thompson, who were held out last

WELCOME AGGIES
Old & New

VISIT:

Leon B. Weiss

THE FASTEST GROWING
MEN'S WEAR STORE
in
COLLEGE STATION

CLOTHES FOR THE CADETS

Tailor Made
or
Ready-to-Wear

All Types of Insignia

Moderately Priced — Nuff Said

WE'LL BE LOOKING FOR YOU

LEON B. WEISS

MEN'S STORE

Just North of the Campus
College Station

Why Pay
MORE
for Less

WHEN
You Can Pay
LESS
for

MORE

AT

SHAFFER'S
Book Store

- BOOKS
- HOBBY SUPPLIES
- RECORDS
- SUPPLIES

"Across from Post Office"
N. Gate College Station

WELCOME AGGIES There's A DIFFERENCE

Yes! There is a difference in Uniform Tailoring . . .
Come in and see us for . . .

THE PERFECT FIT
and that Military Look

- SUMMER SERGE
- PINKS
- GREENS
- HIGH BACKS
- FLAPS
- ZIPPERS

MENDL & HORNAK

TAILORS

North Gate

College Station

WELCOME STUDENTS

Visit our Cafeteria for a variety of Good Home Cooked Foods . . . Where you can select a balanced meal each day for a reasonable price.

— SERVING —

Breakfast — Lunch — Dinner

Wilson's Cafeteria

North Gate

College Station

USED CAR AND TRUCK HEADQUARTERS

Bryan Motor Company

415 N Main Street



Highway 6 — South



WELCOME

Mrs. Aggie

to

Pruitt's Fabric Shop

Headquarters for your
Sewing Needs

- AIR CONDITIONED FOR YOUR COMFORT
- THOUSANDS OF YARDS OF FINE FABRICS
- NOTIONS OF ALL KINDS
- THE FINEST PATTERN SELECTION . . .

Simplicity — Designer — McCalls — Vogue

Pruitt's Fabric Shop

South Side

Phone 4-1169

College Station