

# DeBerry and Duncan Spark Tennis Team to Initial Win

By HAROLD GANN

A&M's varsity tennis team opened its 1950 season, defeating Southeastern Oklahoma State, 5-1, in DeWare Field House yesterday afternoon.

Site for the match had been originally set for the clay courts, but a persistent rain caused play to take place inside, on only one court.

R. G. DeBerry, number one Aggie netman, led his teammates by posting a convincing 6-1, 6-3 victory over Gus Craig in the feature match. DeBerry teamed with Royce Tate, number three Aggie, to win over SOS's duo of Harlow Benning and Rick Green, 9-7, 6-2.

In the second seeded match, Bobby Duncan of A&M beat Green, 9-7, 6-2. In the number three singles event, Royce Tate gave the Cadets another win by taking Benning, 8-6, 6-3.

A&M dropped its only match when Dick Hardin brought back Blake, 6-8, 5-7.

The final match was completed at 7 p.m. when Allen Aaronson

in straight sets while both were still in high school. DeBerry played forcing tennis, seldom coming to the net because his deadly two-fisted backhand was good enough for placement alone. His forehand was steady, his backhand aggressive.

## Grapplers Near End Of Long, Weary Road

With the rude expulsion of 17 more grapplers from the winning ranks, the remaining matches will prove to be even better than the ones of the recent past. Finals in the divisions will come off Tuesday afternoon. Barney Welch, intramural director announced.

Four 129-pound potential wrestlers settled their opponents hash and advanced one space higher toward the final bout. C. W. Penn of F Air Force decisively Scott Carter of the Maroon Band, Sonny Crowley of B Field put the squeeze on Arthur Clardy of E Flight, while James Harmon of E Artillery won over Ed Theford of F Flight, and Shelby Newman of B QMC pinned Bill Underwood of C Infantry.

The 159-pound division ate up the majority of the matches with eight runt-and-growers entering the quarter-final round. Otto Yelton, winner of the 149-pound class last year, took Joe Alexander of K Air Force, W. R. Green of the ASA-gained a default win over Ken Timmons of A Infantry, J. H. Edwards of B Infantry pinned Paul Moore of A Field, Harold Springfield of A Ordnance gained a default victory on Stan Perkins of E Flight who was ill and could not engage in match competition.

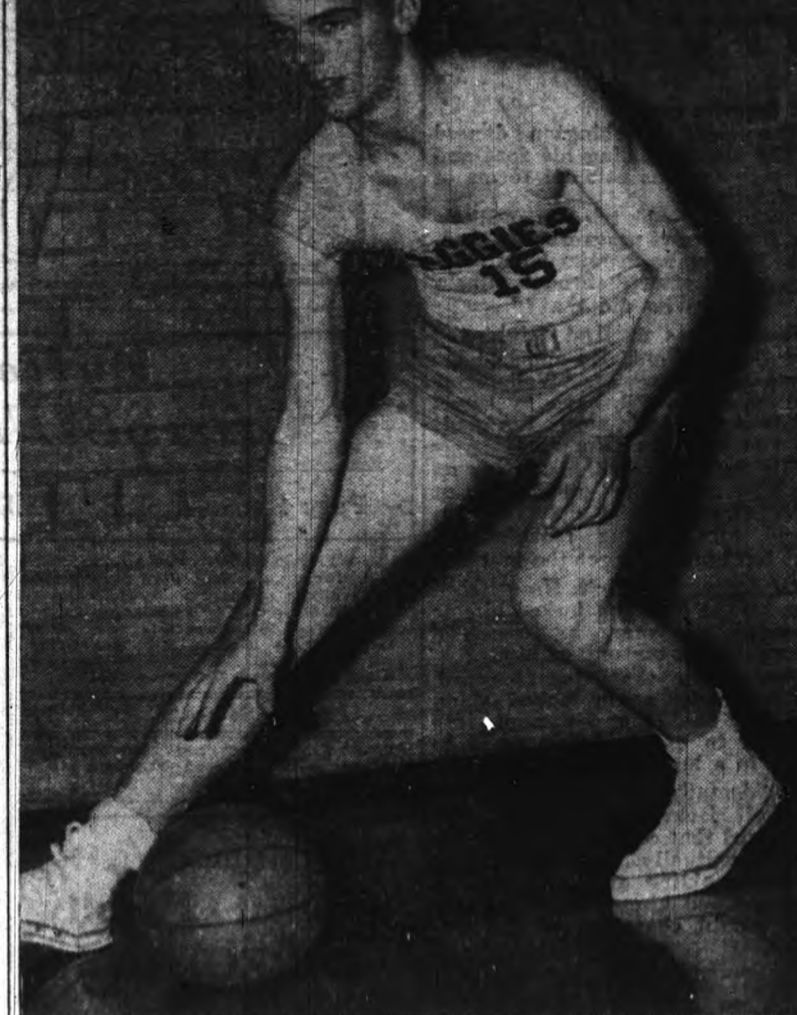
Max Word of Dorm 15 looked good in his decisive pinning of Dave Halton of B Field, while Davis of F Flight downed Chandler of E Air Force, Ken Schroeder of B Cavalry took Jim Hulse of B Engineers, and Ben Coleman of D Field Artillery pinned W. B. Littlejohn of A Flight.

One match in the 149-pound class pitted Lowell Holmes of the Maroon Band and Tommy Spatacchio of C Air Force against each other with the latter pinning Holmes in the last bout of the day.

Warren Pierce of D Air Force, clamped down on George Hoover of D Infantry of the 179-pound class, while Joe Pate of F Air

All members of the team agreed that Tate, number three singles man, played his best of the year. His hard-to-hit baseline shots and hard-to-return serve were Tate's chief weapons.

The main doubles match was the longest of the afternoon. It took DeBerry and Tate an hour and 45 minutes to dispose of their opponents in straight sets. The Cadet couple never lost a serve, and they had to break Green's serve in the last game to take the match.



Drilling with a stiff leg would be a pretty hard job for anyone except Don Garrett of the Fish quintet. Garrett has been a consistent starter for the freshman eagles and one of the team's leading scorers.

## Force was pinned by R. C. Giesche of B Transportation, and Joe Wilhelm of the ASA defeated Charlie Davis of B Coast.

In the 169-pound division Sam Rice of C Cavalry took a default win over Murph Vaught of H Air Force.

Workouts will begin for the coming volleyball game scheduled against Texas University Intramural Club team Thursday night at 8, Barney Welch announced. Everyone interested in playing for the Aggies is invited to come and work with the volleyball club, he added. The final mixing of the TU and Aggie teams will be at Austin during the University's annual fight night.

Finals in boxing at the Annex will begin Saturday afternoon at 4. All boxing and volleyball entries are due Monday, February 27, announced the intramural department today.

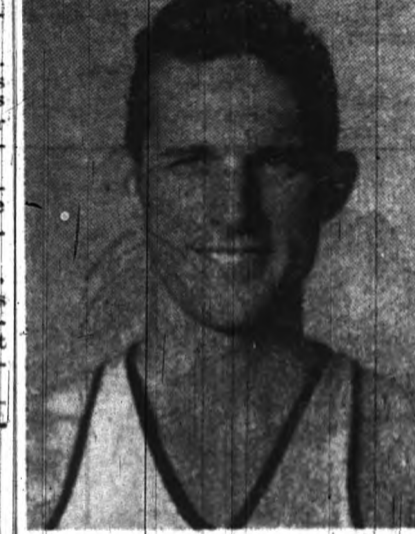
# Davis Baffled Medical Experts With Growth After Polio Hit

By SKIP SIMMEN

Baffling the medical experts, who predicted he would be nothing more than a shrimp after a severe attack of polio in his youth, Ag center Walter "Buddy" Davis has grown some what. Today he stands 6' 8" in his stocking feet.

Vitamin pills were not so well known back in the early thirties, so Mrs. Davis must have raised her son and corn bread and tators, for he has grown an average of two inches a year since his second year in high school to become the tallest cage center in A&M's history.

"Didn't start playing basketball till I was darn near in high school," said Davis, "didn't count on being so tall then." It was



Walter "Buddy" Davis

during his seventh year in the Nederland public school when he first picked up a basketball and he has hardly put it down since.

His height chart was just as accurate as a Santa Fe Chief schedule—in his freshman year in high school he stood six feet even; by the end of his freshman year, when his father glanced at the tape, it said 6' 3". His junior year he stood at 6' 6" and his senior year he reached a lusty 6' 8"!

Only 1/4 of an inch Davis has been at Aggie land almost two years now, and has grown 1/4 of an inch. "Guess I've stopped growing" was his only comment.

It seems that the whole Davis family attempts to defy the law of gravity. Buddy's dad stands

well over six feet, while his mother measures 5' 11". Both of his grandfathers were six footers, with one reaching 6' 6".

"I've got an older brother, but he's only 6' 5", commented Buddy. His brother, A. J., an ex-Aggie, is now playing football for Lamar Junior College at Beaumont. It seems that in the third grade both brothers were the same height but for a while after Buddy's attack of polio, A. J. jumped way ahead. "Kinda left him in the dust since then," says the younger Davis.

Dad Quite Amused While talking to Mr. Davis at the Villanova-Aggie pigskin affair, we found out another peculiarity of the Davis family. It seems that fifteen years ago Mr. Davis was the tallest of the bunch, with his oldest daughter coming next, followed by A. J., and then Buddy. "It didn't take long for that to reverse itself," said Mr. Davis, "for now it's exactly opposite."

Walt's point piling reputation began in his early high school days, and his schoolboy days ended up with the Nederland product collecting over 1,200 points in three years of competition. Probably his greatest season was his last. In that year Davis scored 636 points.

He lettered four years in high school, and was placed on an all-district selection his last three seasons. Davis also was an unanimous choice for a berth on the South squad in the '48 All-Star contest.

Family Sees 'em All The only game his father failed to see in Texas this season was the one played in Dallas against SMU. "He even wanted to go to Arkansas," said Buddy, "but Mom wouldn't let him."

Davis racked up 162 points in 12 games last season to lead the Fish basketballers to one of their finest campaigns in recent years. His whole family, including his father, mother, brother, sisters, two uncles and his brother-in-law witnessed the Rice-Ag clash in Houston Saturday night. "A whole bunch of kin-folk in Houston turned out, too," commented Buddy.

His major interests are not confined to the hardwoods, for Buddy has been going steady for the past five years with attractive Margaret Tynan, a Nederland girl. For the sake of writing material we will further comment that she lacks two inches of being a foot and a half shorter than her beau.

## BANK HOLIDAY

The banks of Bryan and College Station will be closed Wednesday, February 22, 1950 in observance of George Washington's birthday, a legal holiday.

FIRST NATIONAL BANK  
CITY NATIONAL BANK  
FIRST STATE BANK & TRUST CO.  
COLLEGE STATION STATE BANK

# Fish Basketeers Take Close Win Over Lon Morris, 56-55

By FRANK N. MANITZAS

Grabbing an early lead which they never relinquished, the A&M Fish basketball quintet, slipped past the Lon Morris Bearcats 55-55, last night in the DeWare Field House, handing the JC its eighth loss in 85 starts while the freshmen hustled in their sixth win.

The Fish enjoyed leads that never sank below the field goal stage until the last ten seconds of play. Jack Henderson, who was runner-up in scoring with 14 markers, scored three consecutive field goals during the crucial two-minute period which closed the Aggie's 10 point lead with one minute of playing time remaining.

Auerio Ramirez cleared a charity shot for the J. C. team while teammate Truman Crews followed up with only ten seconds to play. The game ended with the Fish holding the ball.

Gains Reversal of Previous One Yesterday's game was the reverse of the previous meeting between the two teams which Lon Morris won although the Fish had sunk the majority of the field goals, the Bearcats came through to beat them on free shots. The JC team dropped in 22 buckets to 21 for the Fish, who cashed in on 14 free shots while the opposition connected with only 11 in yesterday's game.

Leroy Miksch played his regular top-notch game off the boards but fouled out early in the second half and was replaced by Wally Biehl, who played his finest game of the season. Don Heft, Max Montegut, and Joe Gullege formed the guard slots and literally ran their legs off in keeping up with the short but fast Lon Morris five.

All three of the guards clicked with their field shots and the passing throughout the entire game was a vast improvement. Don Garrett and Jimmy Velvin held the forward positions most of the 40 minutes and alternated under the boards.

The scoring for the Fish was evenly distributed between the seven cagers. Heft was high scorer for the freshmen with 11 points, and Montegut trailed with 10.

Easy, All the Way Coach Gene Schrickel's team won the ball game with a sense of having it easy all the way. The team worked together more than ever before and most of the baskets came only after the ball had been worked in. On their few long shots the Fish hit with steadiness, especially Montegut and Heft.

Although Coach O. P. Adams' top scorer for the season—Potato Ramirez—was high scorer in the game with only 15 points, his well displayed shooting form furnished the proof as to how he acquired more than 300 points this season. Ramirez was effective on defense and will prove to be one of the best players in the coming Junior College Meet to be held here.

Primarily through the efforts of these two, Bradley (24-3) today replaced Holy Cross (22-0) as the No. 1 team in the weekly Associated Press Poll.

Holy Cross, which led for five straight weeks, attracted more first place votes—44 to 28—but the Peoria, Ill. Braves finished on top by 135 points. Bradley gathered 1,260 points to Holy Cross' 1,134 from 170 sports writers and broadcasters.

Ohio State—the only other team to receive more than 1,000 points—placed third with 1,061 harvest. The Buckeyes (18-8), who are assured of at least a first place tie in the western conference, drew a dozen first place votes.

In order, the other teams in the select circle are: 4-Duquesne, 5-Kentucky, 6-St. John's, 7-UCLA, 8-Western Kentucky, 9-North Carolina State and 10-LIU.

Unruh, a strong candidate for All-America honors, is the greatest producer of points in Bradley history. The six-foot-four senior has scored 1,703 points in four years, including a team-leading total of 356 this season. His patented shot is a two hand jump which is almost impossible to stop.

Melchiorre, a tremendous rebounder for his size, is Bradley's second leading scorer this season with 317 points. His uncanny ability of outplaying—and out-jumping—men a foot taller has confounded the experts for several seasons.

Lon Morris (53) Fg Ft Pp Tp  
Garret, f 2 3 1 7  
Velvin, f 4 1 2 9  
Bess, f 0 3 0 0  
Gullege, f 2 3 5 7  
Miksch, c 2 4 5 8  
Biehl, c 2 0 3 4  
Montegut, g 5 8 0 10  
Heft, f 4 3 0 11  
Douglas, g 0 0 0 0

Totals 21 14 16 56  
Lon Morris (53) Fg Ft Pp Tp  
Henderson, f 7 0 2 14  
Ramirez, f 2 1 5 5  
Colville, f 2 2 0 6  
Dalin, c 0 1 1 2  
Crews, c 3 1 4 7  
Ousley, c 2 0 1 4  
Alford, g 1 1 4 3  
Ramirez, g 5 5 1 15

Totals 22 11 18 85  
Half-score: Aggie Fish 58, Lon Morris 52.  
Free-throws missed: Fish 12, Lon Morris 11.  
Officials: Breeseale and Wilkens.

There will be plenty of work for Texas Aggie baseball pitchers the week of March 20-25. The Cadets face Ohio State three times, Oklahoma University once and Minnesota twice on six successive afternoons.

## Bradley Breaks Crusader Reign As Top Quintet

New York, Feb. 22.—Bradley's hustling Braves head the nation's basketball parade Tuesday because of a skinny southpaw and a little round man.

Paul Unruh is the lean scoring ace. Little Gene (Squaky) Melchiorre, a mere five-foot-eight, is the dynamic "midget" who sometimes plays the big fellow's game at center.

Primarily through the efforts of these two, Bradley (24-3) today replaced Holy Cross (22-0) as the No. 1 team in the weekly Associated Press Poll.

Holy Cross, which led for five straight weeks, attracted more first place votes—44 to 28—but the Peoria, Ill. Braves finished on top by 135 points. Bradley gathered 1,260 points to Holy Cross' 1,134 from 170 sports writers and broadcasters.

Ohio State—the only other team to receive more than 1,000 points—placed third with 1,061 harvest. The Buckeyes (18-8), who are assured of at least a first place tie in the western conference, drew a dozen first place votes.

In order, the other teams in the select circle are: 4-Duquesne, 5-Kentucky, 6-St. John's, 7-UCLA, 8-Western Kentucky, 9-North Carolina State and 10-LIU.

Unruh, a strong candidate for All-America honors, is the greatest producer of points in Bradley history. The six-foot-four senior has scored 1,703 points in four years, including a team-leading total of 356 this season. His patented shot is a two hand jump which is almost impossible to stop.

Melchiorre, a tremendous rebounder for his size, is Bradley's second leading scorer this season with 317 points. His uncanny ability of outplaying—and out-jumping—men a foot taller has confounded the experts for several seasons.

COOL COMFORTABLE CLEAN  
Beautyrest Mattresses ••• Tile Baths  
BRYAN COURT  
PRESTON DISHMAN, Owner and Manager  
Hi-way Six, South of Bryan  
PHONE 2-7560

SAVE WHEN YOU BUY BEST

## Charlie's Food Market

SPECIALS FOR FRIDAY AND SATURDAY — 24th & 25th North Gate College Station

3 Pound Can CRISCO . . . . . 73c	1 Quart Jar Rosedale OLIVES . . . . . 69c	2-No. 2 Cans Nuzest ORANGE JUICE . . . . . 29c	Quart Jar Diamond—Sour or Dill PICKLES . . . . . 23c
Folgers—1 Pound Can COFFEE . . . . . 79c	18-Oz. Jar Dari-Rich CHOCOLATE SYRUP 2 FOR 19c	2-No. 2 Cans Libby's TOMATO JUICE . . . . . 25c	12 Oz. Can Armour's TREET . . . . . 43c
Large Package DREFT 25c	Large Package TIDE 25c	Large Package IVORY SNOW 25c	
Pint Jar Miracle Whip SALAD DRESSING . . . . . 31c	14 Oz. Bottle Heinz KETCHUP . . . . . 25c	1 Bottle Lee & Ferrins—WORCHESTERSHIRE SAUCE . . . . . 29c	2-No. 2 Cans Mission Green & White LIMAS . . . . . 25c
2-No. 2 1/2 Cans Libby's FRUIT COCKTAIL . . . . . 69c	2-No. 2 1/2 Cans Monarch PEACH HALVES . . . . . 51c	2-No. 2 Cans Diamond SPINACH . . . . . 29c	2-No. 2 Cans Diamond CUT GREEN BEANS . . . . . 29c
2 Pound Carton Kraft's VELVETA CHEESE . . . . . 79c	Roll Tender Veal ROAST . . . . . lb. 55c	Armour's Dexter SLICED BACON . . . . . lb. 37c	★ PRODUCE ★ 116-Size Texas ORANGES . . . . . doz. 33c Firm TOMATOES . . . carton 15c CABBAGE . . . . . 2 lbs. 5c Idaho POTATOES . . . . . 10 lbs. 55c
★ Market ★			
WE DELIVER PHONES 4-1164 — 4-1165			

Stiles Flowers  
AGGIES  
JOHN STILES '48  
Can Fill Your Corsage Needs . . . .  
Beautiful  
Orchids  
Gardenias  
Camellias  
STILES' Flowers  
1903 So. College  
WE DELIVER  
CAMPUS BRYAN ANNEX  
We Can Fill Late Orders Promptly  
CALL 3-1003 DAY OR 3-1032 NITE

PREPARE NOW... FOR COMING EXAMS  
Ask to see the famous COLLEGE OUTLINE SERIES

ACCOUNTING, Elementary . . . \$1.00	ALGEBRA, College . . . . . 1.00	ANCIENT HISTORY . . . . . .75	ANC. GEO. AND MOD. HIST. . . 1.25	ANTHROPOLOGY, Outline of . . 1.25	BACTERIOLOGY, Prin. of . . . . . 1.25	BIOLOGY, General . . . . . .75	BOTANY, General . . . . . .75	BUSINESS, General . . . . . .75	CALCULUS, Th. . . . . . 1.25	CHEMISTRY, First Year Col. . . . 1.25	CHEMISTRY, Maths. for Gen. . . . 1.50	CHEMISTRY, Organs. . . . . .75	CORPORATION FINANCE . . . . . 1.00	DOCUMENTED PAPERS, Writ. . . . . 1.25	ECONOMICS, Principles of . . . . . 1.25	EDUCATION, History of . . . . . .75	ENGLAND, History of . . . . . .75	ENGLAND, 1500-1848, Hist. of . . 1.00	EUROPE, 1815-1947, Hist. of . . . 1.00	EXAMIN. Surv. of . . . . . .75	FORESTRY, Gen. . . . . . 1.25	FRENCH GRAMMAR . . . . . 1.00	GEOLOGY, Principles of . . . . . 1.00	GEOMETRY, Plane, Prob. in . . . 1.00	GERMAN GRAMMAR . . . . . 1.00	GOVERNMENT, American . . . . . .75	GRAMMAR, ENG. Prin. & Prog. of . 1.25	HYDRAULICS for Firemen . . . . 1.00	JOURNALISM, Surv. of . . . . . .75	LATIN AMERICA, History of . . . 1.50	LATIN AMERICA in Maps . . . . . 1.25	LAT. AMER. Civlitz. & Econ. . . . 1.00	LAT. AMER. Economic Dev. . . . . 1.25	LITERATURE, American . . . . . 1.50	LITERATURE, English, Dict. of . . 1.25	LIT., English, Hist. to Dryden . . 1.25	LITERATURE, German . . . . . 1.50	LOGARITHMIC Tables . . . . . .49	MID. AGES, 300-1300, Hist. of . . . 1.75	MUSIC, History of . . . . . 1.00	PHILOSOPHY, An Intro. . . . . 1.00	PHILOSOPHY, Readings in . . . . 1.25	PHYSICS, First Year College . . . . 1.75	POLITICAL SCIENCE . . . . . .75	POLITICS, Dict. American . . . . 1.25	PORTUGUESE GRAMMAR . . . . . 1.25	PROMINENT MEN, Guide to . . . . 1.25	PSYCHOLOGY, Educational . . . . . 1.75	PSYCHOLOGY, General . . . . . 1.00	RUSSELL, History of . . . . . .75	SHAKESPEAREAN Names, Dict. . . . 1.00	SHAKESPEARE'S Plays, Out. of . . 1.00	SLIDE RULE, Practical use of . . . 1.25	SOCIOLOGY, Principles of . . . . . 1.25	SPANISH GRAMMAR . . . . . 1.00	STATISTICAL TABLES . . . . . 1.25	STUDY, Best Methods of . . . . . .60	TRIG., Plane & Spherical . . . . 1.25	TUOOL & STAPLE Plans, Out. . . . 1.50	U. S. in Second World War . . . . . 75	U. S. to 1865, History of . . . . . 75	U. S. since 1865, History of . . . . 1.75	WORLD, Since 1914, History of . . 1.00	ZOOLOGY, General . . . . . 1.00
-------------------------------------	---------------------------------	-------------------------------	-----------------------------------	-----------------------------------	---------------------------------------	--------------------------------	-------------------------------	---------------------------------	------------------------------	---------------------------------------	---------------------------------------	--------------------------------	------------------------------------	---------------------------------------	---	-------------------------------------	-----------------------------------	---------------------------------------	--	--------------------------------	-------------------------------	-------------------------------	---------------------------------------	--------------------------------------	-------------------------------	------------------------------------	---------------------------------------	-------------------------------------	------------------------------------	--------------------------------------	--------------------------------------	--	---------------------------------------	-------------------------------------	--	---	-----------------------------------	----------------------------------	--	----------------------------------	------------------------------------	--------------------------------------	--	---------------------------------	---------------------------------------	-----------------------------------	--------------------------------------	--	------------------------------------	-----------------------------------	---------------------------------------	---------------------------------------	---	---	--------------------------------	-----------------------------------	--------------------------------------	---------------------------------------	---------------------------------------	--	--	---	--	---------------------------------

PRICES SUBJECT TO CHANGE

## THE EXCHANGE STORE

TWO STORES — Main Campus A & M Annex