

**- MURAL -**

(Continued from Page 5)

and Miller, Jackson of C Cav, won out over Ditto of A TC and Madison of B TC tied up Mobley of A FA Bornkahl of CWS mated Briscoe of D AF to complete the day's heavyweight matches.

In the 179-pound class, Plache of Maroon Band scored against Houser of E Air Force, followed by Holmes of A Infantry who dropped Hulon of A CAC. Kruse of B QMC and Wilhelm of A ASA proved themselves superior matmen to Garza of C Cavalry and Kadel of A Ordnance.

Brand of A Air Force topped Bralae of B CAC, and Bice of C Cavalry downed Moore of G Air Force to round out the 169 pound class.

**Forfeits High**

The 159-pound class contained the highest percentage of forfeits of the day's matches. Gardner of G Air Force failed to show up against Little John of A Air Force, while Coleman of D Field scored over Bowden of D Field by a default.

Green of A ASA and Schroeder of B Cavalry tossed Reasoner of G Air Force and Martin of C Air Force for losses. To complete the class, Hulse of B Engineers defeated Carter of A Signal.

Only contest in the 149-pound class featured Terry of B Field Artillery, who concluded the days wrestling by defeating Slatter of B Cavalry.

**FOR MUSIC THAT CAN'T BE BEAT . . .**  
It's really a treat!  
Buy that "AGGIE WAR HYMN"  
We all know that it's the best in the land.  
So buy 'em now while Lou has them on hand  
**LOUPOT'S**  
"Trade with Lou — He's right with you!"  
CLASS '32

**What's Cooking**

**AGGIE SQUARES**, Friday, 8 p.m., Parish House. Election of Officers. Beginners come at 7:30.  
**BASTROP - LEE COUNTY HOME TOWN CLUB**, Thursday, Feb. 16, 7:30 p. m. Room 224 Academic Building.  
**INSTITUTE OF AERONAUTICAL SCIENCES, A&M CHAPTER**, Tuesday, Feb. 21, 7 p. m. Petroleum Lecture Room. Mr. Fred Weick will speak on the agricultural airplane.

**Latin American Club**, Friday, February 17, 7:15 p. m., YMCA Assembly Room. Pictures will be made at this time.

**RODEO CLUB**, Monday, Feb. 20 8 p. m. Lecture Room, A&I Building Everyone is invited.  
**SADDLE AND SIRLOIN CLUB**, Tuesday, Feb. 21, 7:15 p. m., A&I Lecture Room.

**SAN ANTONIO CLUB**, Tuesday, Feb. 22, 5:30 p. m. West side, Agriculture Building. Picture to be taken. Uniform number and suit coats will be worn.

**BAPTISTS -**

(Continued from Page 4)

for local people was started with a class of only four local children. The preaching service was conducted in the auditorium of the EE Building and the classes and unions were held in the class rooms.

In April 1923, the first Baptist Church of College Station was organized with 91 charter members. It is the only Baptist Church in the United States which has been an outgrowth of Baptist Student Union work.

**5% New Automobiles**  
**5% New & Used**  
**AUTOMOBILES FINANCED**  
**New and Used**  
Phone 4-1232  
Flo Colson Travis Nelson

**Battalion CLASSIFIED ADS**

Page 6 FRIDAY, FEBRUARY 17, 1950

**SELL WITH A BATTALION CLASSIFIED AD.** Rates . . . 25¢ a word per insertion with a 25¢ minimum. Space rates in Classified Section . . . 50¢ per column inch. Send all classifieds with remittance to the Student Activities Office. All ads should be turned in by 10:00 a.m. of the day before publication.

**FOR SALE**  
SEE US to buy or sell used furniture. Phone 2-7067. Wood Furniture Company.  
BUY YOUR NEW CAR (any kind) through F. E. Hyson, Box 4761 (South Station) College Station or see in back of Austin Hall.

**New Airline Route Gets CAA Signal**

Washington, Feb. 17.—(AP)—Examiner Vernon Radcliffe recommended yesterday that the Civil Aeronautics Board give Trans-Texas Airways a temporary route from Mission-McAllen-Edinburg to San Antonio and vicinity.

The report was made in the South Texas Service case. The route would go by way of Alice, Corpus Christi and Beeville.

Radiff also recommended that the board order an investigation to determine whether it should suspend the authority of either Eastern Airlines or Braniff Airways to serve Corpus Christi and Brownsville. The recommendations are subject to approval by the board.

**Spring Enrollment Figures Released**

Latest figures released from the Registrar's Office reveal a total enrollment of 6,701 students for the Spring Semester, according to R. G. Perryman, assistant registrar.

**Official Student - Faculty DIRECTORY**

of Texas A&M College

50c per copy

Phone 4-5444

or Mail 50c to

**STUDENT PUBLICATIONS**  
Texas A & M College  
College Station, Texas

—On Sale at Annex—

**SNACK BAR & NEWS STAND**

**FOR RENT**

COMPLETELY FURNISHED modern three room apt.—utilities & phone paid—private bath—garage. 2107 South College Avenue.

**FURNISHED APARTMENT** — 3 blocks from N. Gate—Electric refrigerator, private bath and garage. Available this weekend. Call 4-4764.

**WANTED:** Ride to and from work at Athletic Office, College. Leave 7:40 a.m.—get off 5 p.m. Betty Reed, 413 S. Nail Street, Bryan.

**SERVICES**

COMPLETE Beauty Service and Marie Norman Cosmetics. Ph. 2-8205—Located in block of Palace Theater.

**LFL ABNER Little Evil Man, What Now?**

By Al Capp



Consult **Dr. Carlton R. Lee** OPTOMETRIST With Your Visual Problems 203 S. Main — Bryan Phone 2-1662

**Typewriters for Rent LATEST MODELS BRYAN BUSINESS MACHINE CO.** 209 N. Main Dial 2-1328

**City Limits of College Station On Highway 6, South NEW STATE MO-TEL ULTRA-MODERN The Perfect Place for that Friend to Stay**

**LOOK! WHAT YOUR PENNIES WILL BUY**

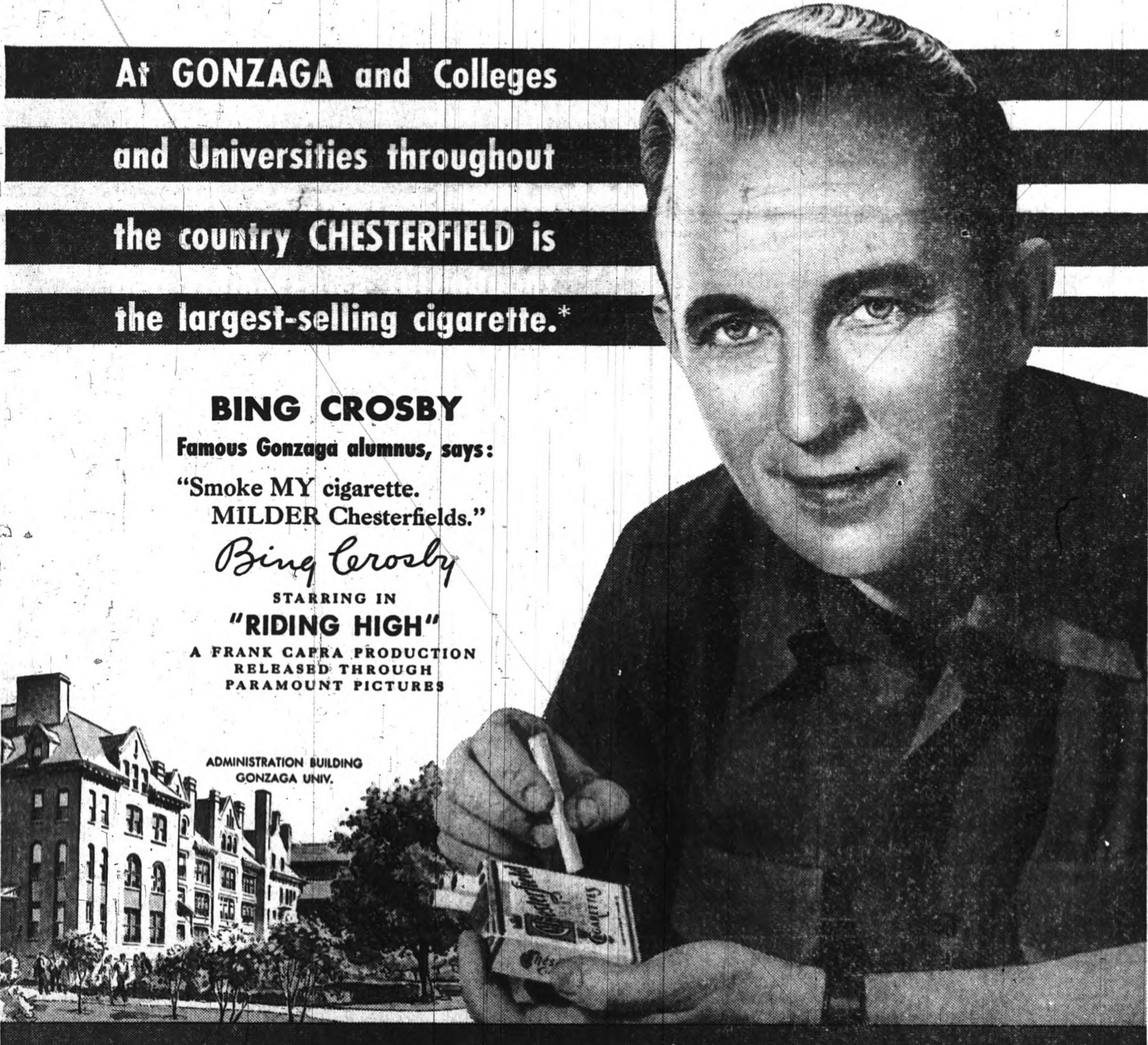
- No. 2—Le Grand White **W K CORN . . . . . 10c**
- 300 **HUNT PEARS . . . . . 15c**
- No. 1—Tall—Sea Ranger **PINK SALMON . . . . . 35c**
- Mrs. Tucker's **SHORTENING . 3 lbs. 48c**
- 80 Count—Good Housekeeping **NAPKINS . . . . . 10c**
- 14 Oz. **HEINZ KETCHUP . . 25c**
- Kraft **CARAMELS . . . . . 1 lb. 29c**
- Chase & Sanborne **COFFEE . . . . . 1 lb. 68c**
- No. 2—Kimbell **WAX BEANS . . 2 cans 25c**
- Medium Size **CAMAY SOAP . 3 bars 20c**
- Post **SUGAR CRISP . 2 for 25c**
- Diamond **SWEET PICKLES . pt. 25c**
- No. 2—Stokely's **PIE CHERRIES . . . . . 25c**
- No. 300—Franco American **SPAGHETTI . . 2 cans 25c**
- Ashley's Green **CHILE PEPPERS . 2 - 29c**
- No. 2—Diamond Standard **TOMATOES . . . . . 10c**
- Campbell's **TOMATO SOUP . 2 for 19c**
- ROYAL GELATIN . . . . . 5c**
- No. 300 Uncle William **PORK & BEAS . . 3 for 25c**
- 2 Oz. McCormick **VANILLA EXTRACT 37c**
- Swans Down Instant **CAKE MIX . . . . . 2 for 55c**
- No. 2—Libby's **PINEAPPLE CHUNKS 27c**
- Large Box Nabisco **VANILLA WAFFERS . 19c**
- Gladia **FLOUR . . . . . 5 lbs. 38c**
- 16 Oz. Libby's **TOMATO JUICE . . . . . 23c**
- 20" x 38" Cannon **TOWELS . . . . . 1 pr. 75c**
- 7 1/2 x 11 1/2 **WASTE BASKETS . . 39c**
- White Mule—Leather Palm **GLOVES . . . . . 98c**
- Fresh—Grade A **EGGS . . . . . doz. 35c**
- 300 Kimbell—Fresh Green Shelled **BLACK-EYE PEAS . . 10c**
- Big Ben **LAUNDRY SOAP . . . . . 5c**
- Top Kick **DOG FOOD . . . . . 3 cans 20c**
- 12 Oz.—Log Cabin **SYRUP . . . . . 27c**
- 1/2 Lb.—McCormick **TEA . . . . . 27c**
- Armour - Dexter

**Quality MEATS money saving PRICES**

- BACON . . . . . lb. 33c**
- Armour's **FRYERS . . . . . lb. 49c**
- Fresh Ground **HAMBURGER MEAT . 33c**
- Kay Kraft **NATURAL CHEESE . 49c**

**★ PRODUCE ★**

- CABBAGE . . . . . lb. 1c**
- LETTUCE . . . . . 2 heads 15c**
- GREEN ONIONS . 2 bn. 15c**
- SQUASH . . . . . lb. 10c**
- CARROTS . . . . . 3 bunchs 10c**
- BEETS . . . . . bunch 5c**



**At GONZAGA and Colleges and Universities throughout the country CHESTERFIELD is the largest-selling cigarette.\***

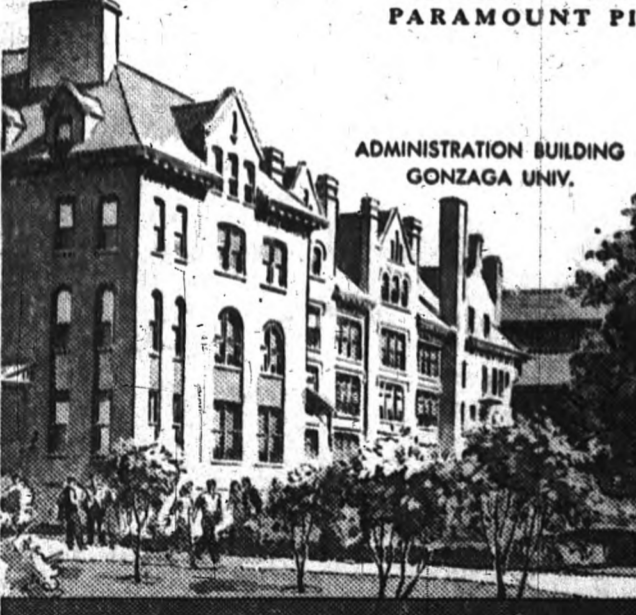
**BING CROSBY**

Famous Gonzaga alumnus, says:

"Smoke MY cigarette. Milder Chesterfields."

*Bing Crosby*

STARRING IN "RIDING HIGH" A FRANK CAPRA PRODUCTION RELEASED THROUGH PARAMOUNT PICTURES



ADMINISTRATION BUILDING GONZAGA UNIV.

**Always Buy CHESTERFIELD**

**They're Milder! They're TOPS!** — IN AMERICA'S COLLEGES WITH THE TOP MEN IN SPORTS WITH THE HOLLYWOOD STARS

Hear CHESTERFIELD'S Great New BING CROSBY SHOW Every Wednesday over the entire CBS Network—9:30 P.M. E. S. T.—8:30 P.M. C. S. T.—7:30 P.M. M. S. T.—6:30 P.M. P. S. T.



Highway 6 and Coulter Drive

\*BY RECENT NATIONAL SURVEY

Copyright 1950, Looserr & Mies Toacoco Co.