

Stop, Look, Listen At Train Crossings

Since earliest times railroads have worked hard to provide many of the things that we take for granted. They carry the fresh foods we eat, take people on their vacations, and in some cases carry the dead to their burying places. Trains can do more than this. Last year, according to the National Safety Council, 1,875 people were killed at grade crossings by trains. Even more distressing is that just a casual look at the figures show that 72 per cent of these people died at railroad crossings where the whole track was in view.

Many of the 4,700 injuries which occurred could have been avoided

by merely following the rules which the Safety Council lists below.

1. Approach all rail-highway crossings with your vehicle under control, prepared to stop, if necessary.
2. Look and listen. If the view is obscured, use extra precautionary measures. Know the way is clear before attempting to pass over the crossing.
3. Obey the traffic rules and caution others to do so.
4. Support public enforcement agencies in their campaigns for safe driving on the highway and at grade crossings.
5. Always observe these definite warning signs.

Safety Council Suggests Cautious Christmas Time

Chicago Dec. 16.—Put safety at the top of your last-minute shopping list, the National Safety Council suggested today.

A safe Christmas celebration, free from accidents that mar holiday happiness in thousands of American homes, is the very best present anybody can give or receive, the Council said.

There is a need for everyone to recognize the extra holiday hazards and to offset them with the extra caution needed to hold down accidents that make the Christmas-New Year period the most dangerous time of the year. The Council pointed out that traffic accidents reach their peak at year-end because of winter weather, earlier darkness and holiday festivity. Home accidents also soar during this period.

The Council and 160 other national organizations are conducting a nationwide campaign to hold down the threatened holiday toll. City and state officials, civic leaders and local safety leaders are cooperating with the campaign behind the slogan, "Don't Let Death Take Your Holiday!"

"Christmas is a very special day of joy," said Ned H. Dearborn, president of the Council. "But it is a very special day in another sense, too—a sense that spells

tragedy for many homes and families in the midst of Yuletide happiness.

"Our records show that the traffic death toll for the day before Christmas is even greater—about two and a half times the daily average. These two days call for special caution on everybody's part—driver and pedestrian alike.

"If everyone assumes personal responsibility for a safe celebration for himself and others," Dearborn continued, "whether he is walking or driving in traffic, or is in his own home—then Christmas will be a truly happy holiday for all of us."

The Council offered the following suggestions to keep the spirit of Christmas—alive:

1. Start early and take it easy when you are driving. Heavy holiday travel is especially dangerous because of winter's earlier darkness and bad weather.
2. Be alert when you are walking. Avoid the rush of last minute Christmas shopping, and carry packages so they do not obstruct your view. Motorists cannot always see you, especially during early evening darkness.
3. Stay sober when you are celebrating. Don't let holiday spirit—or spirits—replace common sense.

Would You Pass Over Forty Cars on Road?

If you are traveling sixty miles per hour and passing a car that is going forty-five miles per hour, it is like passing forty cars parked bumper to bumper on the road. You would look ahead carefully before passing so many parked cars. Look just as carefully when passing one moving car, because it takes 600 feet to safely overtake, pass and clear the car ahead at those speeds.

- DANCES -

(Continued from Page 2)

FORT WORTH A&M CLUB. Christmas party, Tuesday, December 27, 8:30 p. m., Two-Bucks, Aggies and friends.

AGC JUNIOR CHAPTER. Christmas party, Monday, December 19, 7 p. m., Franklin's 76c to members, steak dinner.

FORT ARTHUR AGGIE MOTHERS' CLUB. banquet and dance, Wednesday 8 p. m., December 28, Avalon Club.

Lampshades Damaging

READING, Eng. — (AP) — Lampshades are playing havoc with British history, Lt. Col. G. E. C. Malet, registrar of the national register

of archives, told Reading University students.

He lamented the custom of using "old deeds, with interesting examples of old writing and historic signatures and seals, to make

Lutheran Christmas Service

LUTHERAN STUDENT CENTER CHAPEL
(North Gate)

Rev. Fred Mgebroff, Pastor

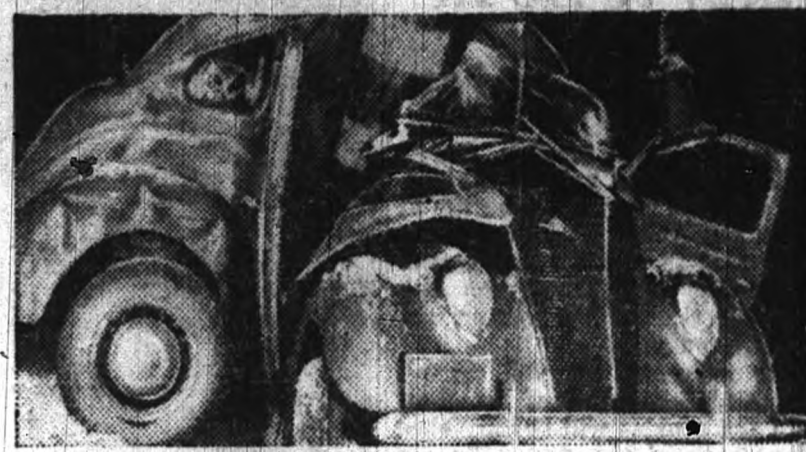
SUNDAY, DEC. 18:

9:30 a.m.—Sunday School and Bible Class

10:45 a.m.—Christmas Communion Service
(Lutheran students invited)

6:30 p.m.—"The Living Word", Christmas program and moving-picture, presented by the Sunday School. The public is invited to attend.

NOTE: Free bus service from the Annex to the Lutheran Student Center at 9 a. m. on Sundays.



DEATH NEVER TAKES A HOLIDAY

Don't let holiday "spirits" get you involved in an accident. Liquor and gasoline don't mix. If you drink, don't drive. Let someone who is not drinking drive you home. Remember, death never takes a holiday.

Be Careful—the life you save may be your own!

This advertisement is published in the public interest by

HALSELL-DONAHO CO.
BRYAN, TEXAS
"Your Buick Dealer"

Are your Tires safe?



The odds are greater that you will have an accident in winter. So weigh the odds in your favor by having your tires checked. Use B. F. Goodrich Mud Grip Tires.

Be Careful—the life you save may be your own!

This advertisement sponsored in the interest of your safety by

B. F. GOODRICH CO.
123 E. 25th St. — Bryan

Attend The Church of Your Choice Sunday

COLLEGE STATION'S OWN
BANKING SERVICE

College Station State
Bank

North Gate

The Exchange Store

"Serving Texas Aggies"

With Two Stores

Main Campus

A & M Annex

NASH

NASH

MIT LEE AND CO.

27th and Bryan

BRYAN, TEXAS

Complete Automobile Service

American Laundry

— and —

Dry Cleaners

Bryan, Texas

Serving the College Station and
Bryan Communities Since 1909

First State Bank & Trust
Co.

BRYAN TEXAS

Member Federal Deposit Insurance Corporation

MENDL AND HORNAK

Uniform Tailor Shop

Tailor made uniforms of
all kinds.

North Gate

Phone 4-8444



Merry Christmas

The greatest joy of the Christmas season is that of the little tots who awaken early Christmas morning and gaze in pleased wonder at the marvelous Christmas tree and the beautiful toys Santa Claus has brought.

The happy expressions on these little faces is worth all the trouble the grown-ups have taken to make the occasion a perfect one. Scenes like the one pictured here are among the happiest memories of childhood.

A little later on these children will begin to learn the deeper significance of Christmas. They will learn that the gifts of their parents, in the mythical role of Santa Claus, are but symbols of God's great gift to humanity.

The good will, love and unselfishness of the Christmaste are but a foreshadowing of the peace and good will that is to prevail among men through the teachings of Jesus, whose birth the Christmas season commemorates.

Parents should endeavor to lead their children into an understanding of this deeper meaning of Christmas—a task in which the Church stands ready to cooperate.

THE CHURCH FOR ALL . . .
ALL FOR THE CHURCH . . .

The Church is the greatest factor in earth life, the building of character and good citizenship. It is a source of spiritual values. With every day civilization can survive only if every person should attend services regularly and support the Church. They are: (1) For his own sake. (2) For his children's sake. (3) For the sake of his community and nation. (4) For the sake of the Church itself, which needs his moral and spiritual support. Plan to go to church regularly and read your Bible daily.

Copyright, 1947 by
E. E. Koster, Strasburg, Virginia

A & M Christian Church

9:45 A.M.—Church School
11:00 A.M.—Morning Worship
5:00 P.M.—Supper Group

A & M Church of Christ

9:45 A.M.—Bible Classes
10:45 A.M.—Morning Worship
7:15 A.M.—Youth meeting

A & M Methodist Church

9:30 A.M.—Cadet Coffee Hour
10:00 A.M.—Sunday School
11:00 A.M.—Morning Worship
7:30 P.M.—Evening Worship

Christian Science Society

11:00 A.M.—Morning Worship

St. Mary's Chapel

8:30 A.M.—Sunday Mass
10:00 A.M.—Sunday Mass

College Station Baptist

9:45 A.M.—Sunday School
10:50 A.M.—Morning Worship
6:15 P.M.—Baptist Training Union
7:15 P.M.—Evening Worship

St. Thomas Episcopal Chapel

8:00 A.M.—Holy Communion
9:30 A.M.—Aggie Coffee Club
9:30 A.M.—Church School
11:00 A.M.—Morning Worship
6:30 P.M.—Evening Service

A&M Presbyterian Church

9:45 A.M.—Sunday School
11:00 A.M.—Morning Worship
6:30 P.M.—Student League
7:30 P.M.—Fellowship Service

American Lutheran Church College Station

9:30 A.M.—Bible Class
10:45 A.M.—Worship Service

City National Bank

Member Federal Deposit Insurance Corporation
Bryan, Texas

Madeley's Pharmacy

South Gate

● DRUGS

● NOVELTIES

● FOUNTAIN

Portraits of Distinction

FROM

Aggieland Studio

A & M Grill

North Gate

THE BEST SUNDAY DINNER IN
COLLEGE STATION AFTER
CHURCH

The Triangle Drive Inn

Famous for its . . .

COLD DRINKS

DELICIOUS SANDWICHES

AND

CHICKEN-IN-THE-BASKET

Midway Between Bryan & College Station

J. A. Williams & Sons

113 E. 26th St — Bryan

Telephone 2-1574

INSURANCE REAL ESTATE
MORTGAGE LOANS



A & M METHODIST CHURCH

You are cordially invited to attend all the church services.

Sunday:

9:50 A.M.—Church School
11:00 A.M.—Morning Worship
7:00 P.M.—Worship — Fellowship

Wednesday:

6:00 P.M.—Dinner — program for Aggies

Rev. James Jackson
Pastor



STOP, LOOK AND LIVE LONGER

Obey Traffic laws—they're made for your protection. Learn what the laws are and observe them. You'll live longer.

Be Careful—the life you save may be your own!

This advertisement is published in the public interest by

KAY WOLEN'S DEPT. STORE

BRYAN, TEXAS