

# Ruth Lord Cited For Long Service

Ruth Lord is thinking about doing some fishing—she doesn't have to be down at the office tomorrow morning. In fact, she doesn't have to go back to the office at all.

After 31 years "as secretary to a succession of college officials," Miss Lord has retired. Her service to the college, however, did not go unrecognized.

At its meeting last week on the campus the Board of Directors cited Miss Lord's service to the college by passing a resolution stating, "In positions of important administrative responsibility, Miss Lord has made their work easier . . . and their accomplishments greater and has aided students in their contracts with these officials in a competent and friendly way."

Ruth Lord first came to A&M in 1918 from Belton where she had been secretary to President J. C. Hardy of Baylor College, as it was known in those days. Prior to coming to Belton she had been secretary to the president of Colorado A&M College.

Back in 1918 the college enrollment was only around 2,000 and Miss Lord remembers distinctly the lack of paved highways between College Station and Bryan. Those were the days when the famed "Toomerville" trolley was in operation.

Her finest job at A&M was as secretary to B. Youngblood who was at that time director of the Texas Agricultural Experiment

Station. She was there three years and transferred to the Animal Husbandry Department where she was secretary to D. W. Williams, then head of that department.

In 1926 she was named secretary to E. J. Kyle, dean of the School of Agriculture and remained in that position for 19 years. Following Dean Kyle's appointment as ambassador to Guatemala, she became secretary to T. D. Brooks, then dean of the School of Arts and Sciences.

When Dean Brooks retired in 1947 to become dean emeritus and professor of education, Miss Lord became secretary to Dr. P. B. Pearson, dean of the Graduate School, who succeeded Dean Pearson, on leave with the Atomic Energy Commission in Washington.

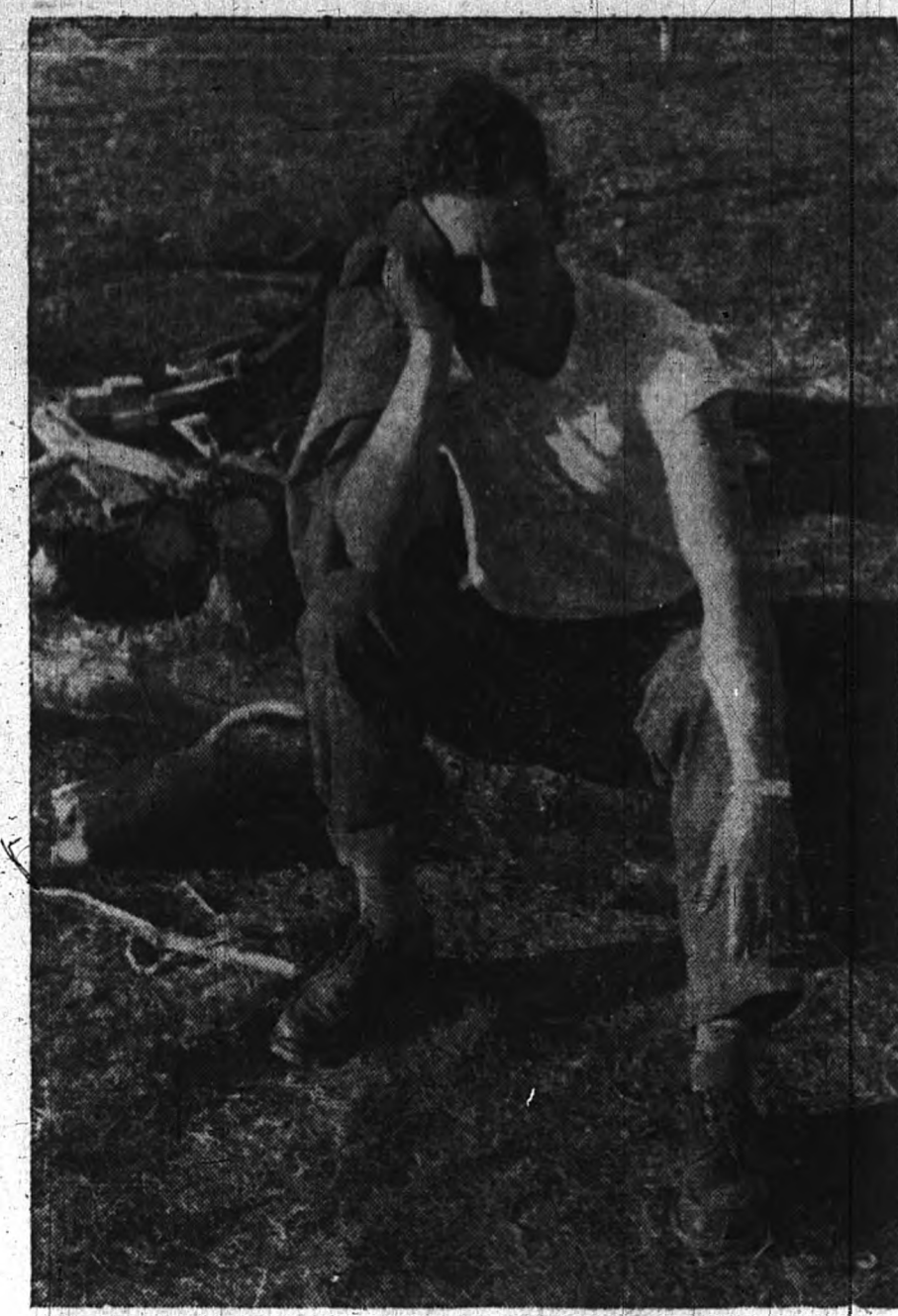
## Corps Picture Schedule Given

Corps students began to have their individual pictures taken yesterday according to Jim Woodall, corps co-editor of the Aggie-Land 1950. Woodall emphasized that the corps students must have their pictures made within the periods specified on the following schedule because there will be no make-up pictures made for those persons who fail to do so.

He added that executive officers, first sergeants, and staff members should have two pictures made, one with the garrison cap and one without. Pictures are to be made at the Aggie-Land Studio and a charge of two dollars must be paid at the time the pictures are made, Woodall said.

The schedule for corps students is as follows:

- CORPS SENIORS**  
Nov. 28 through Dec. 1: A through H  
Dec. 2 through Dec. 6: I through R  
Dec. 7 through Dec. 10: S through Z
- CORPS JUNIORS**  
Dec. 12 through Dec. 15: A through M  
Dec. 16 through Dec. 20: N through Z
- CORPS SOPHOMORES**  
Jan. 4 through Jan. 7: A through J  
Jan. 9 through Jan. 12: K through T  
Jan. 13 through Jan. 14: U through Z
- CORPS FRESHMEN**  
Jan. 16 through Jan. 17: A through M  
Jan. 18 through Jan. 19: N through Z



The Battalion photographer didn't get this man's name, but apparently he would have been too tired to give it to him anyway. This was one of thousands of men who pitched in to build the biggest bonfire in A&M history.

## Exams Readied For Civil Service Job

Examinations for the position of Construction Inspector, with entrance salaries ranging from \$3,100 to \$3,825 per annum, have been announced by the Civil Service Commission in Dallas.

Employment will be with the Bureau of Reclamation in the states of Oregon, Washington, California, Arizona, Nevada, Idaho, Montana, Wyoming, Colorado, New Mexico, Utah, North Dakota, South Dakota, Nebraska, Kansas, Oklahoma, and Texas, according to a bulletin released by the commission.

Application forms and additional information may be obtained from the post office; the Executive Secretary, Central Board of U. S. Civil Service Examiners, Bureau of Reclamation, Denver Federal Center, Denver, Colorado; or from the Regional Director, 14th U. S. Civil Service Region, 210 South Harwood Street, Dallas 1, Texas.

## INVESTMENT MEETING

(Continued from Page 1)

from Hardin-Simmons in 1940, and his Masters in Business Administration from Stanford University in 1947. He attended the Merrill Lynch Training School for 6 months in 1947.

**Final Session**

The final session of the course on Dec. 14, features two speakers and an information film. Lewis E. Brazleton, commodity department manager, will discuss "The Commodity Markets." "Municipal Bonds" is the topic to be discussed by Charles D. Pearce, Jr., account executive. The film, a New York Stock Exchange movie entitled "Money at Work" will be introduced by Cyrus T. Johnston, account executive.

Brazleton attended the University of Texas for 3 years. He was employed for 14 years as salesman and sale manager for the Houston Packing Company. He has been with the Merrill Lynch firm since May 1, 1946.

Pearce is a graduate of the University of Pennsylvania. He has been in the banking business for 20 years and with the present firm since September 1944.

Johnston attended the Merrill Lynch Training School for 6 months. He spent three years in the manufacturing business and 6½ years with Northwest Airlines.

**SHAFER'S Book Store**

MAKES YOUR Christmas Shopping Easy!

Use our check list to pick your gifts:

- Radios
- 45 RPM Record Players
- 45 RPM Records
- Record Albums
- 78 RPM Records
- Accessories

**DROP IN TODAY!**

**Shaffer's Book Store**  
North Gate

But... THERE'S AN "A" IN YOUR FUTURE

If you prepare now with the COLLEGE OUTLINE SERIES

ACCOUNTING, Elementary	\$1.00
ALGEBRA, College	1.00
ANCIENT HISTORY	.75
ANC. MED. and MOD. HIST.	1.25
ANTHROPOLOGY, Outline of	1.25
BACTERIOLOGY, Prin. of	1.25
BIOLOGY, General	.75
BOTANY, General	.75
BUSINESS LAW	1.50
CALCULUS, The	1.25
CHEMISTRY, First Year Col.	1.25
CHEMISTRY, Maths. for Gen.	1.00
CHEMISTRY, Organic	1.50
CORPORATION FINANCE	1.00
DOCUMENTED PAPERS, Writ.	1.25
ECONOMICS, Principles of	.75
EDUCATION, History of	.75
ENGLAND, History of	.75
EUROPE, 1500-1848, Hist. of	1.00
EUROPE, 1815-1947, History of	1.00
EXAMS, How to Write Better	.25
FRENCH GRAMMAR	1.00
GEOLOGY, Principles of	1.00
GERMAN GRAMMAR	1.00
GOVERNMENT, American	.75
GRAMMAR, ENG. Prin. & Proc. of	1.25
HYDRAULICS for Firemen	1.00
JOURNALISM, Survey of	1.25
LATIN AMERICA, History of	1.50
LATIN AMERICA, Hist. of	1.25
LAT. AMER. Civiltz., Bggs. in	.50
LAT. AMER. Economic Dev.	1.25
LITERATURE, American	1.50
LITERATURE, English, Dist. of	.75
LIT., English, Hist. to Dryden	1.25
LIT., Eng. Hist. since Milton	1.25
LITERATURE, German	1.50
LOGARITHMIC & Trig. Tables	.60
MID. AGES, 300-1500, Hist. of	.75
MUSIC, History of	1.00
PHILOSOPHY, An Intro.	1.00
PHILOSOPHY, Readings in	1.25
PHYSICS, First Year College	.75
POLITICAL SCIENCE	.75
POLITICS, Hist. of American	1.25
PORTUGUESE GRAMMAR	1.25
PUNCTUATION, Guide to	1.50
PSYCHOLOGY, Educational	.75
PSYCHOLOGY, General	1.00
RUSSIA, History of	1.50
SHAKESPEARE'S Names, Dict.	1.00
SHAKESPEARE'S Plays, Out. of	1.00
SLIDE RULE, Practical use of	.75
SOCIOLOGY, Principles of	1.25
SPANISH GRAMMAR	1.00
STATISTICAL METHODS	1.25
STUDY, Best Methods of	.60
TRIG., Plane & Spherical	1.25
TUDOR & STUART Plays, Out.	1.50
U. S. in Second World War	.75
U. S. in 1848, History of	.75
U. S. since 1848, History of	.75
WORLD, Since 1914, History of	1.00
ZOOLOGY, General	1.00

PRICES SUBJECT TO CHANGE

**The Most Intimate**

**The Most Personal**

**of**

**Christmas Remembrances**

**YOUR PHOTOGRAPH**

**AGGIELAND STUDIO**

North Gate College Station

**Exchange Store**

"Serving Texas Aggies"

TWO STORES

Main Campus A&M Annex

## Local Poets Choose Carson President

The Bryan-College Station Chapter of the Texas Poetry Society met Sunday for an organizational meeting with Dr. T. F. Mayo, head of the English Department, serving as temporary chairman.

Clara Carson of the English Department was elected president. Jerry Reeves was elected vice-president and Mrs. F. L. Thomas was elected secretary-treasurer.

This chapter will be affiliated with Texas society which is headed by David Russell of SMU, state poet laureate.

Members are eligible to compete for prizes offered by the state society.

Next meeting will be Sunday, December 18, in the YMCA, at 2:30 p. m.

Loss something? Then find it quickly with a BATTALION classified ad. Call 4-5324.



It was a long, cold night, but the bonfire guards stuck it out to the bitter end. This was one of more than 20 fires visible from the top of Goodwin Hall last week.

**On the Minute . . .**

Accuracy for your watch when we repair it. Skilled mechanics do the work expertly—promptly.

**SOL KLEIN**

**WATCH REPAIRING & ENGRAVING**

213 Varisco Bldg. Ph. 2-1976

## LIL ABNER Beggars Can't Bechoosers



## LIL ABNER Happy End



## By Al Capp



## By Al Capp



## \$500 Research Grant Received For Experimental Tectonics

Experimentation on the campus to supplement theoretical geological knowledge has been aided by a research grant.

Trustees of the research fund and the executive committee of the American Association of Petroleum Geologists have approved a grant of \$500 to the Texas Engineering Experiment Station and the Department of Geology for work on "Experimental Tectonics."

The tectonics research project duplicates in the laboratory with scale models geologic structures encountered in nature. Such research gives a better understanding to petroleum geologists of the actual conditions found below the earth's surface, according to the Geology Department.

Studies in this direction, by means of the mathematically sealed models, are expected to result in considerable new information to this subject of widespread interest in the geological field, the department said.

An asphalt of Texas Highway Department specification has been chosen to represent the salt for reasons of its relatively low specific gravity, high viscosity, insolubility in water and availability. Sediments are represented by granular materials of a local source. Deformation taking place is made more evident in the models through use of marker layers to provide a color contrast in the otherwise homogeneous materials.

The well-known plastic flow theory of the origin of salt domes has been followed as a theoretical basis for model construction and study.

Several preliminary conclusions have been reached as a result of experimental studies to date. These deal with origin of the salt domes.

## AGGIES

(Continued from Page 3)

addition to Copeland and Chapin, looked the best on the defense for the Cadets.

**Scoring Drives**

Briefly, the scoring was thus:

1. Rudy Bauman recovered Glen Lippman's fumble on the Aggie 20 and Perry Samuels, Clay and Borneman rushed it over in seven plays. Clay, who had a 12-point total for the day, then made good the first of his six conversions.
2. The Aggies rolled 60 yards in 14 plays with Dick Gardemal passing and Smith bucking the line. Smith took it over from the one-foot line. Shaeffer kicked goal and it was 7-7.
3. In the second quarter, Texas capped a 61-yard move when Townsend came scooting around from the Aggie 8, took a statue of Liberty handoff from Campbell and bolted into the end zone.
4. Townsend went over guard from the one, climaxing a scoring drive which consumed 14 plays and covered 74 yards.
5. Then came the slugging penalty, Goff punched over from the three and Texas led, 21-14, at half time.
6. Townsend moved most of the spark as Texas slipped up to the cadet 26; then Campbell uncocked a pass to end Ben Procter. The balding end was knocked out of bounds on the one-foot line and Clay burst across on the next play.
7. The Longhorns lead became 35-14 after five and a half minutes of the final period when Townsend squirted off tackle from the four. It was a 20-yard effort that began with Bobby Dillon intercepting Gardemal's pass.
8. Texas finally rolled in its guns with only 1:51 remaining. This time the Orange moved 55 yards on 11 plays, Levine going the last 10 over left tackle.

## A Harried Reporter

Great Falls, Mont.—(AP)—Beards grew thick and bristly in the county jail while legal chins wagged. The sheriff had submitted a bill for \$10.50 covering razor blades for prisoners.

The county commissioners said that was a sharp question which the county attorney would have to answer. He split no hairs in his opinion—said the bill was all right.

## What's Cooking

**AICHE MEETING**, Tuesday, Nov. 29, Pet. lecture room. Film and discussion of banquet.

**AMERICAN CHEMICAL SOCIETY (Student Affiliate)**, 7 p. m., Tuesday, Nov. 29, Room 9, Chemistry Building. This is a special meeting. The regular meeting will follow at 8 p. m.

**CAMERA CLUB**, 7:30 p. m., Tuesday, Nov. 29, Room 35, Physics Building.

**CAMPUS STUDY CLUB**, 3 p. m., Tuesday, Nov. 29, Room 129, Academic Building. Emergency meeting.

**HEART O TEXAS CLUB**, 7:30 p. m., Thursday, Dec. 1, Room 305, Academic Building.

**INDUSTRIAL EDUCATION CLUB**, 7:30 p. m., Tuesday, Nov. 29, Room 127 Academic Building. Christmas party to be planned.

**LAMAR CHAPTER HOUSTON A&M CLUB**, Thursday, December 1, 7:15 p. m., Room 301 Goodwin Hall.

**NAVARRO COUNTY A&M CLUB**, 7:30 p. m., Thursday, Dec. 1, Room 228, Academic Building. Christmas Party to be planned.

**RODEO CLUB**, 8:15 p. m., Tuesday, Nov. 29, A&M Library. Important.

**SADDLE & SIRLOIN CLUB**, 7:30 p. m., Tuesday, Nov. 29, A&M Lecture Room.

**SENIOR PETROLEUM WIVES CLUB**, 7:30 p. m., Thursday, Dec. 1, Cabinet Room, YMCA.

## Battalion CLASSIFIED ADS

Page 4 TUESDAY, NOVEMBER 29, 1949

SELL WITH A BATTALION CLASSIFIED AD. Rates . . . 3c a word per insertion with a 25c minimum. Space rates in Classified Section . . . 60c per column inch. Send all classified with remittance to the Student Activities Office. All ads should be turned in by 10:00 a. m. of the day before publication.

**FOR SALE**

PORTABLE TYPEWRITERS, \$10.00 off on all makes and models. Royals, Smith-Corona, Underwoods and Remingtons. Convenient terms. Gift wrapped. Late model rent machines, Typewriter and adding machines. Bryan Business Machine Company, 209 North Main, Dial 2-1228, Bryan.

Delta Lath, 12" swing, all tools.  
Harley Davidson Moto Cycle Model 125  
1-25,000 B.T.U. Floor Furnace  
310 Foster Avenue, College Hills

1941 FORD TUDOR, first class condition. See at 107 Highland, College Station, after 5:00. Phone 4-8270.

**SPECIAL STUDENT RATES**

1 year	14c
1 year Time	\$4.75
1 year Fortune	\$5.50
1 year Readers Digest	\$2.75
1 year Coronet	\$2.50

JOHNSON'S MAGAZINE AGENCY  
Box 284  
College Station, Texas

Consult **Dr. Carlton R. Lee** OPTOMETRIST  
With Your Visual Problems  
203 S. Main, Bryan  
Phone 2-1662

**Now Now Now**  
New and Used  
**AUTOMOBILES FINANCED**

Phone 4-1232  
Flop Colson  
Travis Nelson

**LET US PROVE . . .**

our exclusive **SANTONE SERVICE** is Best!

Ph. 2-8665  
**PERFECTO CLEANERS**

**Insure Tomorrow Today**  
EUGENE RUSH, General Agent  
American National Insurance Co.  
North Gate Above Aggie-Land Pharmacy

**LONDON'S**  
Paint Store  
2201 College Road

**UNDERWOOD TYPEWRITERS**  
SUNDSTRAND ADDING MACHINES  
15% Discount on Portables

**C. M. WRIGHT**  
W.S.D. Clothiers  
PHONE 2-1475  
Bryan, Texas