



## Roundin' It Up

BY BILL POTTS AND CHUCK CABANISS

Once again we stick out our collective heads on the Southwest Conference games to be played tomorrow, though this time we're hoping they're not stuck out so far as last week.

Our somewhat emotionalized guess on the outcome of the Aggie-LSU fray Saturday night was the worst last week because we "figured" that the Aggies had a good chance in that one.

As for the Baylor-Arkansas game, we just squeaked by that one by the skin of our teeth. Although we didn't use the proverbial coin to decide which way to pick that one, we could have because there was no hope to compare the two.

Baylor's easy win over the Porkers was probably the outstanding win of last week.

Steer-Sooner Reports Varied  
The remainder of the games, which we picked right, don't deserve to be spoken of except maybe the Texas-Oklahoma affair in Dallas.

Guesses by various individuals on that big game last week varied all the way from Texas 40-Oklahoma 7, to Oklahoma 45-Texas 0.

Reports on that one stated that the Steers went to Dallas thinking that they didn't have such a good team, and were surprised when they got two TD's.

Oklahoma did know what kind of a team it had, however.

A&M 13-TCU 20

The Frogs are going to be ready for the Aggies this week on their home field, especially after their showing the last two Saturdays. Although the Frogs did beat Indiana by one touchdown last Saturday, they're still smarting from the beating administered them by the Porkers.

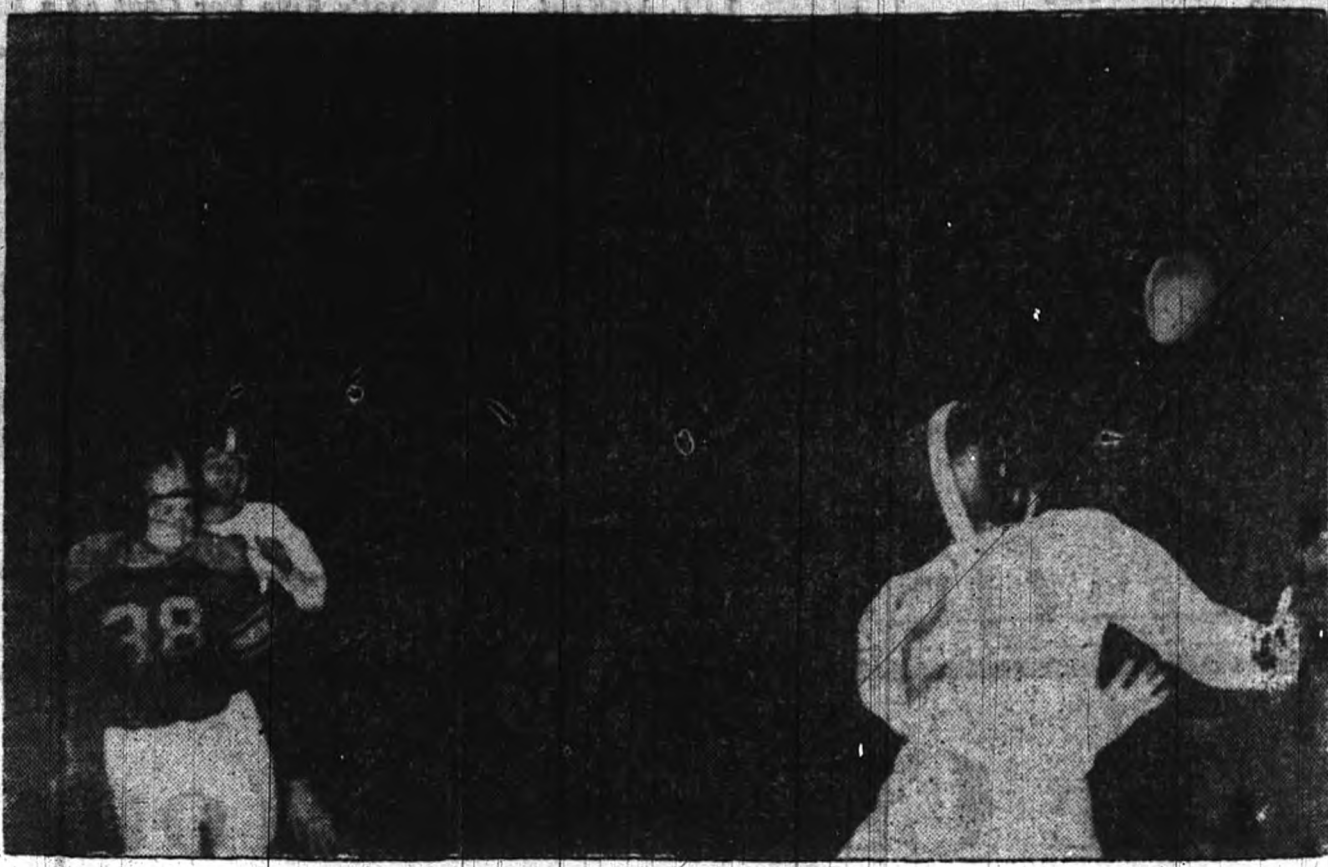
Coupled with that is the fact that they haven't won a home game since 1947 when they defeated the Aggies there in one of the worst games which an A&M team has ever played.

Given a dry field though, the Aggies are going to make it really rough going for the Frogs, especially in the air.

SMU 14-Rice 13

Although the coin wasn't used to decide this prognostication, it might as well have been.

Rice probably has what it takes to defeat a stronger team than



Ray Haas (20), Kingsville all-stater and one of the most promising Fish backs, awaits a pass thrown by quarterback Ray Graves. Speed merchant Haas, who resembles a whirling dervish

when opponents attempt to down him, caught the aerial and picked up a first down on the Cub six. Baylor's number 38 forced him out of bounds to terminate the yardage pickup.

## Flag Play Begins, Tight Games Seen

Tight play featured the opening games of the intramural flag football season. Flight 10 won a 0 to 0 ball game from Company 4 on penetrations while Company 1 defeated Flight 13 by a 6 to 0 margin.

Flight 10 carried home their victory over Company 4 on

the strength of 4 penetrations to 2. Company 4 found themselves behind 4 penetrations to 2 with one play left in the game when they executed a sleeper play which nearly carried all the way for a touchdown. However, the play was stopped on the 18 yard line and the play had produced nothing more than a penetration. It was a case of too little too late and Flight 10 had cause to celebrate.

SMU this year but you've got to remember the luck the Mustangs seem to have latched on to and kept.

Another reminder too: that "playing coach", Doak Walker, is still around and as long as he is, it's going to take a much better than average club to whip the ponies.

To cinch the guess, the Owls have yet to prove that they are not another "November" ball club. Remember week before last against LSU?

Baylor 34-Texas Tech 7

This one looks easy for the Bears. The passing combination of Burks to Isom will probably connect quite a few times before this one is over and the Red Raiders don't have what it takes to stop the Bruin attack.

That score above may look small after this game is over. Every one on the Baylor bench will probably play.

Texas 11-Arkansas 7

Texas will probably win this one but it won't be by a lopsided score like in its first three games.

The Porkers could however, rise up again and smack the Steers. They were up for the TCU tilt, then low for the Bears. They could be up again. They're also playing in Little Rock, near their home grounds.

Jack Fry and John Garcia were the mainstays of Company 4. Flight 10 utilized the fine play of Fletcher, Harper, and Ferry.

The band of Company 1 notched their initial victory of the season by virtue of a Flight 13 fumble. This occurred late in the first half on a bad pass from center, deep in Air Corps territory. Three plays later, the music-makers scored on an aerial to Joel Austin to register the first touchdown in the 1949 intramural season.

The Air Boys of Flight 13 only serious threat came, through the air lanes when Robin shared Willson's toss on the 25-yard line. Sout line play by the band stopped the Air Corps' thrust.

Company 1 got fine performance from J. R. Campbell, Austin, Parrish and Beard. Aggressive play by Sweeney, Willson, Stegall, Borden and Matthews stood out for the losers.

# Ags Head for Cowtown Tilt with Horned Frogs

By WELDON ALDRIDGE

The Aggie football squad left this morning for Fort Worth where the Aggie-Horned Frog grid clash is scheduled for the TCU gridiron Saturday afternoon at 2:30. The cadet squad and the coaching staff will stay in Dallas tonight and go on to Fort Worth Saturday morning.

The entire student body will be on hand Saturday for the Aggies' first conference tilt of this season. A corps parade will precede the game.

Since the Frogs are rated in the "off and on" class, the forecasters are not favoring the Cowtowners by more than a 13-point margin. Both the Aggies and the Frogs have been displaying erratic play so far this season.

The Frogs started off the season with a bang as they defeated a not too strong Kansas eleven. The following weekend saw underdog Oklahoma A&M eleven rise up to tie the heavily favored Frog squad.

The Frogs' first conference tussle found an Arkansas Razorback team downing the Frogs to the tune of 27-7. Last weekend all-conference Lindy Berry led his team to a slim win over a mediocre Indiana aggregation.

Past records of the A&M-TCU gridiron series do not look too bright for the Frogs. Since the classic began in 1897 the Aggies have taken 24 wins while the Frogs have won only 16.

However, from 1925 until 1935 the Frogs defeated the Aggies in every game except for one which ended in a 0-0 deadlock. The Purples won both the 1917 and the 1948 contests, too.

Operating from the single wing, the double wing, or the Meyer spread the Frog captain, Lindy Berry, promises to be the busiest man in the backfield quartet. In

1948 he handled the ball in 52 per cent of the Frogs' offensive plays, both in the air and on the ground. Berry was rated No. 1 in the Southwest on total offense and No. 4 in the nation.

In the aerial department all-Southwest Conference end Morris Bailey is the receiving half of the "Berry-to-Bailey Battery." He has snagged 49 passes for 691 yards in his three seasons at TCU.

At fullback John Morton has been doing an excellent job filling Pete Stout's shoes. The 6' 3", 220-pound ball carrier is a transfer from Compton Junior College in California.

Heading the tackle list is big Clarence Marable, who was captain of the Waco High School team which went to the state quarterfinals in 1944. He was all-district twice and lettered three years in high school.

Bill Moorman, two-year letterman at left end; George Boals, lefterman offense specialist at left end; Jack Archer, Jim Hickey, and Orvin Browning at the halfback slots; and co-captain Don Narnell at the other tackle position, are expected to see lots of action Saturday.

Guards Moyelle Hicks and Harold Kilman and center Max Eubank complete the list of probable starters.

Missing from the Aggie lineup this weekend will be John Christensen, who has a badly injured shoulder. He will probably be out for at least three weeks.

While the Aggies took what Coach Stitteler called "an old-fashioned country licking" last weekend, Bob Smith, Glenn Lippman, Jim Flowers, and Carl Molberg turned in steady performances. Don Nicholas will probably retain his recently acquired quarterback position, and Bobby Goff will be the starter at right halfback.

At the left and right end posts, Wray Whittaker and Cedric Copeland will be snagging Nicholas' passes if the weather permits an aerial battle. Tuck Chapin will probably replace injured Mickey Spencer at the left tackle slot while right tackle Dwayne Tucker remains in that position.

Bounding out the probable Aggie starting lineup are Max Greiner, right guard, and Carl Molberg at left guard flanking center Bob Bates.

### TIME to Check . . .

Your watch and have it thoroughly cleaned. Our experts will put it in A-1 working order.

**SOL KLEIN**

WATCH REPAIRING & ENGRAVING

213 Varisco Bldg.

Ph. 2-1976



LET'S SEE, WHAT'S THE FIRE DEPARTMENT'S PHONE NUMBER?  
NATIONAL BOARD OF FIRE UNDERWRITERS

**HOMER ADAMS, '45**

INSURANCE LOANS REAL ESTATE  
N. Gate

## Mais Super Market

Specials - Friday & Saturday, October 14 - 15

|   |  |
|---|--|
| RANCH STYLE Beans . . . . . 300 Size 10c              | Cigarettes . . . . . ctn. \$1.70               |
| DELMONTE Spinach . . . . . No. 2 2 for 25c            | NO. 300 Butter Beans . . . . . Can 10c         |
| WHITE CREAM Corn . . . . . No. 300 13c                | ROYAL GELATIN Pudding . . . . . 3 For 21c      |
| STOKLEY'S Peas . . . . . No. 2 17c                    | Oxydol - large . . . . . 25c                   |
| FLOTILL - CRUSHED Pineapple . . . . . No. 2 2 for 49c | KRAFT Salad Dressing . . . . . Pint 29c        |
| CHOCOLATE - DABRICH Syrup . . . . . Pint 10c          | Pickles . . . . . qt. 25c                      |
| Hershey's Kisses . . . . . 8 Oz. 23c                  | BESTMAID Dill or Sour 5c                       |
| DASH Dog Food . . . . . 2 for 25c                     | ST. JOSEPH Aspirin . . . . . 1 Doz. 5c         |
|   | SWIFT JEWEL Shortening . . . . . 3 Lb. Can 78c |

### - Meats -

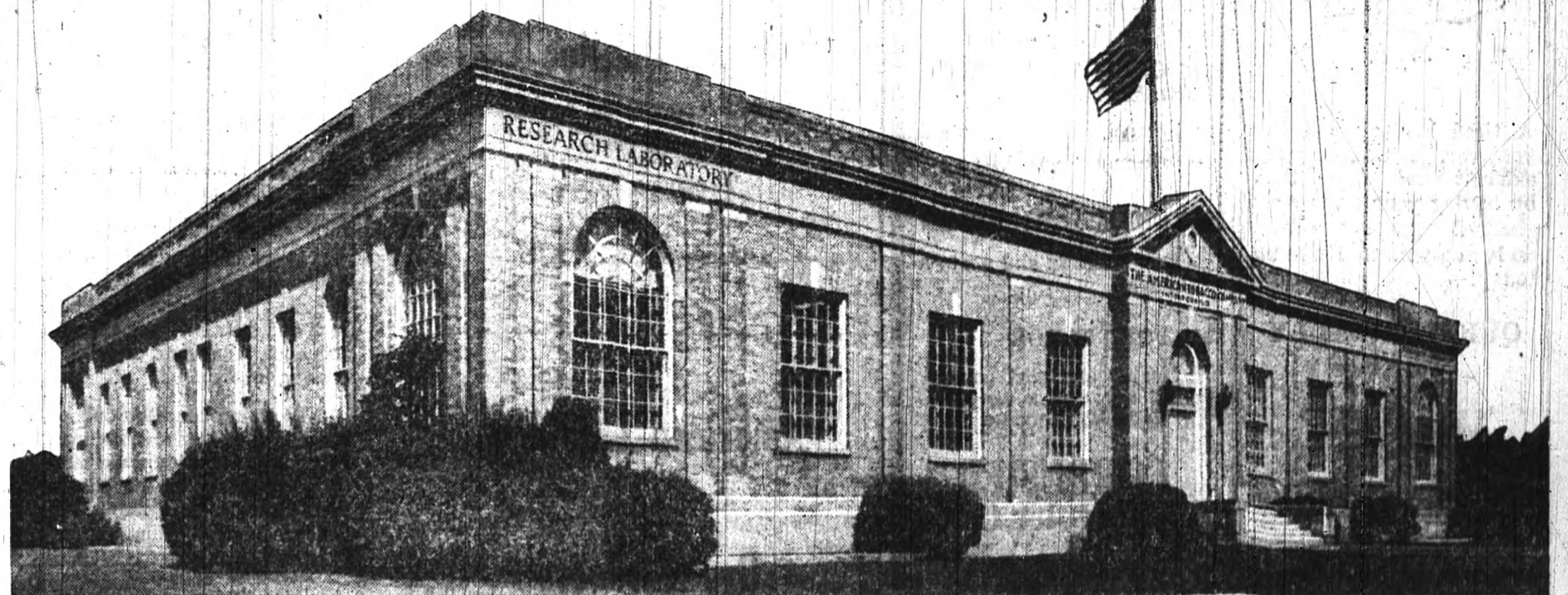
|                                   |
|-----------------------------------|
| BACON . . . . . lb. 59c           |
| PICNICS - 4-6 lb. . . . . lb. 49c |
| FRYERS . . . . . lb. 55c          |
| CHUCK ROAST . . . . . lb. 49c     |
| ROUND STEAK . . . . . lb. 75c     |

### - Vegetables -

|   |
|---|
| LETTUCE . . . . . 2 for 25c               |
| DELICIOUS APPLES . . . . . 2 lbs. for 25c |
| CALIFORNIA-229 ORANGES . . . . . doz. 35c |
| CALIFORNIA POTATOES . . . . . 10 lbs. 49c |
| GRAPES (Tokay) . . . . . lb. 10c          |

We Give Green S & H Stamps  
ONE FREE DELIVERY DAILY  
Complete Stock Groceries & Meat

## To give you a finer cigarette Lucky Strike maintains AMERICA'S FINEST CIGARETTE LABORATORY



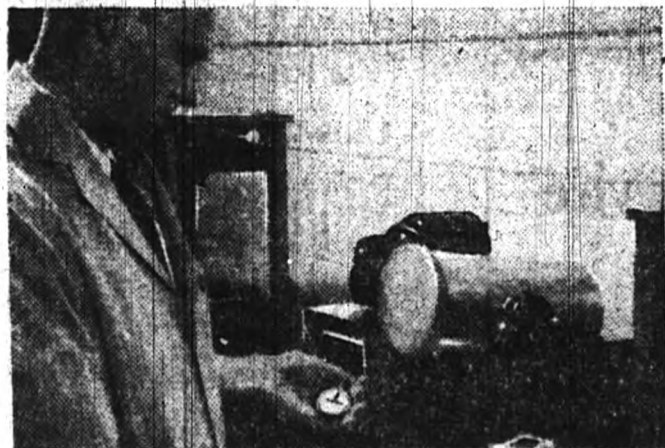
America's largest cigarette research laboratory is your guarantee that Luckies are a finer cigarette!

YOU SEE HERE the largest and most complete laboratory of its kind operated by any cigarette manufacturer in America.

For many years Lucky Strike scientists have delved into cigarette research on an extensive scale. Out of this has grown an elaborate system of quality control. Every step in the making of Luckies—from before the tobacco is bought until the finished cigarette reaches you—comes under the laboratory's watchful eye. As you read this, a constant stream of tobacco . . . samples

from every tobacco-growing area . . . is flowing into the laboratory in Richmond, Virginia. These samples are scientifically analyzed, and reports of their quality go to the men who buy at auction for the makers of Lucky Strike.

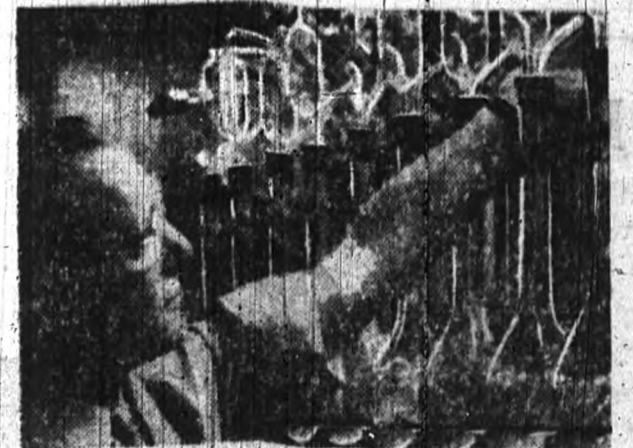
Armed with this confidential, scientific information—and their own sound judgment—these men go after finer tobacco. This fine tobacco—together with scientifically controlled manufacturing methods—is your assurance that there is no finer cigarette than Lucky Strike!



So round, so firm, so fully packed. Typical of many devices designed to maintain standards of quality, this mechanism helps avoid loose ends . . . makes doubly sure your Lucky is so round, so firm, so fully packed.



So free and easy on the draw. This meter draws air through the cigarette, measures the draw. Samples are tested to see if they are properly filled. Tests like this guarantee Luckies are free and easy on the draw.



Testing tobacco. Samples from every tobacco-growing area are analyzed before and after purchase. These extensive scientific analyses, along with the expert judgment of Lucky Strike buyers, assure you that the tobacco in Luckies is fine!



We know: **LUCKIES PAY MORE** for fine tobacco (millions of dollars more than official parity prices)

We are convinced: **LUCKIES PAY MORE** for cigarette research

So, for your own real deep-down smoking enjoyment

**Smoke a Lucky!**

Lucky Strike's fine tobacco and constant research combine to give you a finer cigarette. Prove this to yourself. Buy a carton of Luckies today!

COPY, THE AMERICAN TOBACCO COMPANY