

# Quarterback Club Meets Tomorrow at 7:30 In Assembly Hall

## Football In The Southwest Is Certainly A Family Affair

Dallas, Oct. 11 (AP)—Football in the Southwest Conference is family proposition. You can hook the teams, players and coaches up in almost every instance if you dig deeply enough. Take Matty Bell, coach of Southern Methodist. When he was head mentor at Texas Christian University one of his players was Blair Cherry. Cherry today, is coach of the University of Texas and a deep rival of Matty.

Then there's Harry Stiteler, coach of Texas A. and M. Back when Bell was coach of the Aggies Stiteler was one of his quarterbacks.

When Bell was coach at Texas Christian he once gave a kid who hung around the locker room a football. It was Davey O'Brien's first football. That youngster became TCU's greatest quarterback. In 1938 O'Brien engineered TCU to victory over SMU where Bell had gone as head coach three years before.

Bob Woodruff, coach of Baylor, and John Barnhill, coach at Arkansas, both played at the University of Tennessee. They also were coaches at Tennessee at the same time. The Baylor-Arkansas football rivalry in the Southwest Conference is quite rugged.

Jess Neely is coach at Rice. Back when he was coach of Clemson his assistant was Frank Howard. Now Frank is coach of Clemson and recently Neely's Rice team beat Clemson 33-7. Line coach for Clemson is Walter Cox, who played guard on Neely's 1939 team at Clemson.

H. N. Russell is Southern Methodist coaching staff. Back when he coached Highland Park High School in Dallas there was a youngster on the team named Doak Walker. The Doaker today is the celebrated All-America back at SMU who makes Russell's offense click.

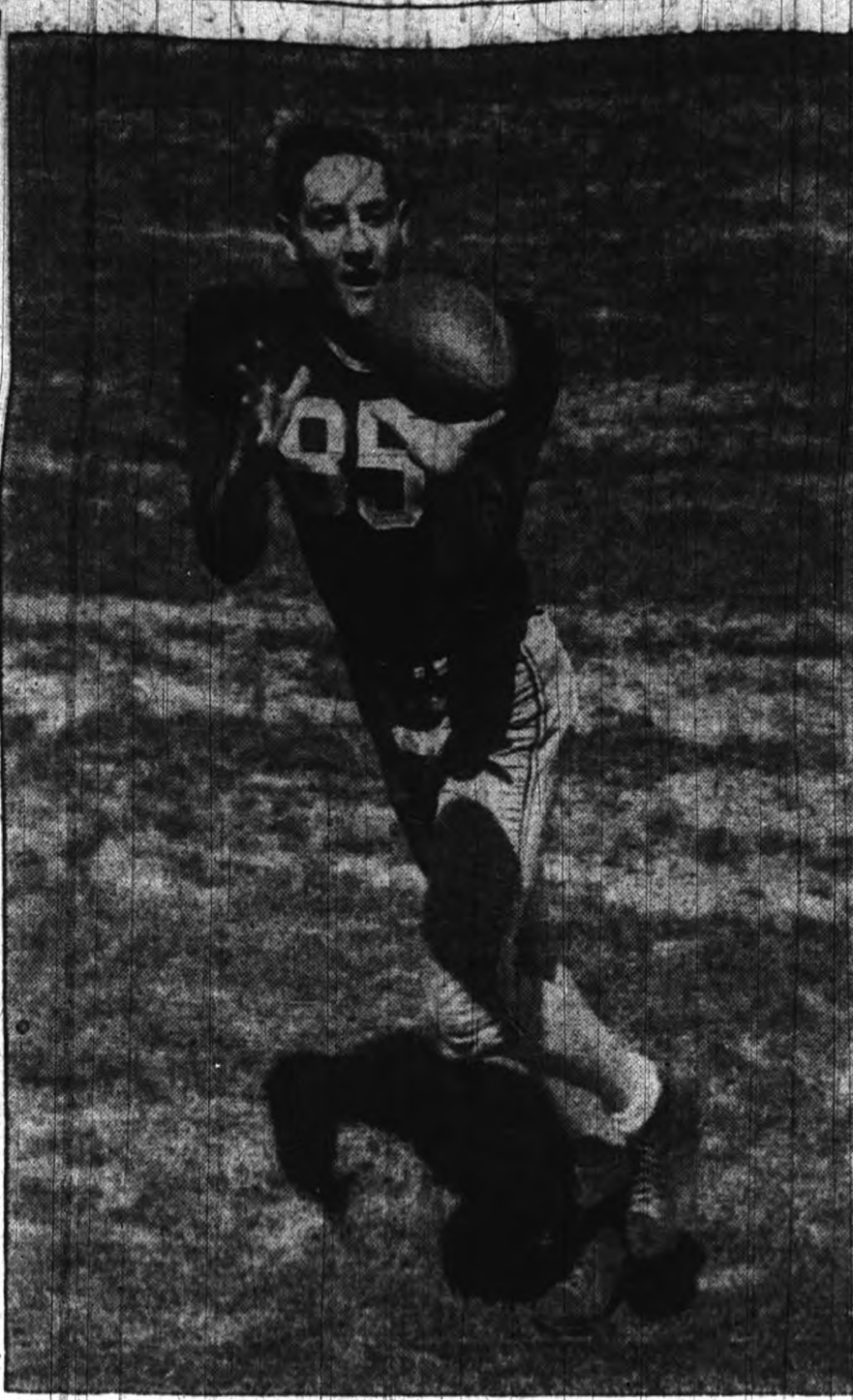
The U. S. Amateur golf title went to Bobby Jones in 1924, 1925, 1927, and 1930 — more times than to any other player.

And on the SMU squad is H. N. Russell, Jr. Stiteler thinks this family proposition in football can be carried a trifle too far. Harry was assistant coach at Rice several years ago. A couple of his products a Waco High School the year before were Ed James Williams and Tackle Ralph Murphy. Harry got them to go to Rice. Now they are key men of a Rice team that's been licking Texas A&M.

Going into other strata of football, there's the coach of Henderson County Junior College in Texas. He's Cecil Johnson, who once played for Paris Junior College. Recently his Henderson County team beat Paris 28-26.

At McMurry College, Wilford Moore is coach. Moore played guard on the Hardin-Simmons University team that Frank Kimbrough coached, from 1937 to 1940. Now Kimbrough is coach of West Texas State College. This season Moore's McMurry team beat Kimbrough's team 34-7.

Over at Tyler High School is Ed Hennig, Jr. His father is the coach. Ed, Jr., is quite a passer. Hennig, Sr., developed a couple of mighty fine throwers at Sweetwater and Tyler. At Sweetwater it was Sammy Baugh. At Tyler it was Gil Johnson, who sparked SMU to two Southwest Conference titles and now is with the All-America Conference Yankees.



Dan Spears, 190 pound junior end from Belton, has been playing at that position on offense some this fall. Spears is expected to develop into one of A&M's better end performers before the grid season closes.

## Aggies Given No. 68 Spot by Williamson; TU In Top Ten

As the Aggies finish off the last game of the '49 non-conference schedule, and after having suffered two startling defeats (second and third worst in the history of the Cadets), all are eagerly awaiting the outcome of the famed Williamson rating being going into the first of SWC grid games.

The Aggies have fallen consistently, since they were rated a slightly high eighteenth after the Villanova game, and now they are to be found a much lower sixteenth, with next Saturday's opponent TCU rated as the upstart SWC team to us at the No. 49 spot.

The Aggies have dropped again "earned comparison of team strengths" and are rated 85.5 after an 88.0 "earned comparison" for last week. TCU in the No. 49 spot is rated slightly higher with an 87.1.

Mighty Kentucky blasted their way through Georgia last week by a score of 25-6 and, by virtue of this win, retained possession of the nation's No. 1 gridiron spot boosting their "comparison rating" from a 99.1 to an almost perfect 99.6.

Kentucky is trailed by highly touted Army in the No. 2 position after the pointers downed powerful Michigan last weekend. Oklahoma has begun to climb again and have jumped this week from fifth to third place.

Even though the Williamson predictions were 90% correct in an 87 game coverage last Saturday, the debut of the high-scoring Longhorns came as a complete surprise to the sportswriting profession.

Other teams in the Southwest Conference included in the Williamson system are Baylor, rated a very high twelfth with an "earned comparison" of 94.1 SMU, still Walkered, has moved from eighteenth to sixteenth and 93.5, Rice, after smashing through weak New Mexico, has jumped up to twentieth from their No. 24 spot of last week and have a 92.9 rating.

Arkansas lost their game last week and at the same time lost a firm foothold in the eyes of the "pressbox Nostradamuses." The Hogs are now at a much lower twenty-fourth from a high twelfth of the previous week and their "strength" is valued at 91.6.

Nation's No. 1 Game According to Williamson's figures, the number one game of the week will find Notre Dame entertaining Tulane at South Bend, Ind. Both of these teams are among the top ten. Notre Dame may find that "entertaining" is the wrong

word. Tulane is rated some six teams above the Irishmen, and Williamson throws all emotion to the wind by saying that all the Green Wave has to beat is the Leahy-psychology.

The number two game will be California over Southern California, which is completely against the earlier predictions of the system. Number three should be Minnesota to shade Ohio State, while Vanderbilt takes Florida for a close fourth.

The SWC gridiron battles and the predicted outcome is Texas U. to outscore Arkansas with their many punches; SMU to overpower Rice; Baylor to easily beat Texas Tech; while statistics of played games give the Horned Frogs of Fort Worth a decided advantage over the boys from Aggieland.

In case you are wondering just how sharp this Williamson guy is, let these facts and figures help you in having confidence in the man. In the "major" games he has predicted 299 and has an average of 81.7%. For all the games of this season, which have been 1154, he has a correct percentage of 80.9. For consistency, which is a percentage of winners-over-losers, he has a right average of 99.6%.

The top ten teams of the nation for this week and their "earned strengths" are as follows:

Kentucky	99.6
Army	99.3
Oklahoma	98.4
Tulane	97.4
California	96.6
Texas U.	96.1
Minnesota	96.0
So. California	95.7
Ohio State	95.7
Notre Dame	94.5

### Ag. Ed. Majors Begin Teaching

Agricultural Education senior students began their practice teaching October 10.

Those students who are now doing practice teaching work are J. F. Michalski and W. H. Dull at Columbus; Carr Reed and H. N. Freeman, at Clifton; and W. A. Wyatt Jr. and William Coker, at Hearne.

Each student is scheduled to do a week's teaching in the respective high school vocational agriculture departments.

According to Professor Henry Ross, there are approximately 128 students that will do practice teaching this semester. Forty-seven of these students are potential January graduates.

## S Battalion S SPORTS

TUESDAY, OCTOBER 11, 1949 Page 3

### Aggies Meet Frogs In Cowtown Saturday

The Aggies hit the road for the fourth successive weekend when they travel to Fort Worth next Saturday to renew an old rivalry with the TCU Horned Frogs.

It's a "sink or swim" game for the Toads, who can't afford to lose or tie if they are to remain in the SWC pennant race. The Aggies, in their customary underdog role, will be out to break all kinds of jinxes.

(1) The Farmers will be shooting for their first conference victory since they blanked Baylor, 24-0, in October, 1947.

(2) Harry Stiteler's Aggies will be trying for their first victory over a TCU team since 1946. The Cadets haven't beaten TCU in Fort Worth since 1943 when they turned the trick, 13-0.

Physically, the two teams should be in about the same condition. Both have played on the road the past two weeks with the Frogs engaging Arkansas and Indiana. The same days the Cadets faced opposition at least as tough in Oklahoma and LSU.

Last year's scoring thriller between the Frogs and Aggies was closer than the final tally (27-14, favor TCU) indicated. The Cadets led, 14-13, in the fourth quarter, couldn't stop Lindy Berry's passes and fell behind, 20-14. In the final minutes of the fourth period, the Cadets tried a desperation pass and it backfired for another TCU score.

Berry and Pete Stout played prominent roles in TCU's 1948 victory over the Aggies. Stout is gone, but Berry returns and is apt to trouble the Aggies plenty with his passes.

Bobby Goff, who galloped 54 yards for an Aggie TD against the Frogs last year, is back for a final season of college ball. A fullback in 1948, Goff now operates at right half.

Ty Cobb holds the American League record for playing the most years with one team, 22 with the Detroit Tigers.

### MURAL NEWS

Non-military competition will begin today, with 5:15 basketball matches at the Grove. The opening tennis games will be sometime next week, but have not been announced yet.

Intramural flag football and intramural horsehoes will begin next Monday, October 17, and will last until the latter part of December.

Horsehoes must be played this semester instead of volleyball because of crowded conditions at the Grove where both the basketball and volleyball matches must be played.

Flag football follows its regular schedule.

BASKETBALL Non-Military	Time
Team vs. Team Courts	
17 Leggett	1 5:15
Law Walton	2 "
Pulley	3 "
4 Mitchell	4 "

### SCHEDULE FOR WEDNESDAY BASKETBALL—Military

Team vs. Team Courts	Time
C AF SR CO L	1,2,3 5:15
A ORD D INF	2 "
C INF D AF	3 "
A CAV I AF	4 "
TENNIS—Military	
Team vs. Team Courts	Time
A COMP B VET	1,2,3 5:10
A CA B AF	4,5,6 "
A INF B CAV	7,8,9 "
A SIG B CA	10,11,12 "
B QMC A VET	13,14,15 "
H AF B AF	16,17,18 "

## Program Includes Stiteler Talk, Prizes, and LSU Game Movies

The fourth edition of the Quarterback Club will meet tomorrow night in the Assembly Hall at 7:30 with Head Coach Harry Stiteler as the principal speaker. Movies of the A&M-LSU clash in Baton Rouge will also be shown with Stiteler narrating the films.

Prizes will also be awarded to the 11 winners in last week's Quarterback Club contest.

This is the second time that the weekly meeting of the club has been advanced from Thursday to Wednesday night because of a freshman football game.

Stiteler's talk tomorrow night will be on the Aggies this year now that the opening of conference play is near, and upon the Southwest Conference in general. Prizes will be awarded to the following persons for submitting the best guesses on football games in which Southwest Conference teams played last Saturday.

John F. Buchanan, Box 5113, College Station; Mrs. Odell Frazier, Box 721, College Station; Robert L. Jones, Box 2209, College Station; D. E. Newsum, YMCA; E. E. Neal, Box 5011, College Station; Ted Means, 104 S. Polk, Bryan; Lewold Connor, Box 2175, College Station; Ralph L. Terry, Box 4815, College Station; Ray P. Reed, Box 1947, College Station; W. C. Davis, City Nat'l. Bank Bldg., Bryan; and Ray N. Williams, Box 512, College Station.

### Marks Broken By Yanks, Bums In 1949 Series

New York, Oct. 11 (AP)—Following is a list of the major league team records broken in the 1949 World Series.

Most World Series won New York (A) 12 (old record 10 New York A).

Most World Series New York (A) 16 (old record 15 New York A).

Most World Series games won New York (A) 55 (old record 51 New York A).

Most series won in five games New York (A) 4 (old record 3 Brooklyn (N) 3 (old record 2 by 5 clubs).

Most players participating in five game series one club, 25, Brooklyn (N) (old record 20 by five clubs).

Most players participating in five game series both clubs, 45 Brooklyn (N) 25, New York (A) 20. Old record 40 Brooklyn and Boston 1918.

Largest player receipts pool for five game series \$490,855.75 (Record player pool receipts is \$493,674.83 in seven game series between New York and Brooklyn in 1947).

Most at bats total series New York (A) 2,796 (16 series). Most pinch-hitters used one club (See MARKS, Page 4).

Re-Almed, brother of Armed, champion money winning gelding, began his racing career with a victory at Belmont Park.

### AGGIES . . .

Why Go to Bryan to Buy Your SIGN CANVAS . . .

HENRY A. MILLER, North Gate, College Station has just what you need!

SAVE You Money, Time and Gas! Don't Delay!

—SEE—

Henry A. Miller Hardware . . . Today

for YOUR SIGN CANVAS

For quick, thorough review on many SUBJECTS

Start preparing today with the COLLEGE OUTLINE SERIES

ACCOUNTING, Elementary	\$1.00	LITERATURE, American	\$1.50
ALGEBRA, College	1.00	LITERATURE, English, Dict. of	1.25
ANCIENT HISTORY	.75	LIT. English, Hist. & Civ. in	1.25
ANC. HIST. and MOD. HIST.	1.25	LIT. Eng. Hist. since Milton	1.25
ANTHROPOLOGY, Outline of	1.25	LITERATURE, German	1.50
BACTERIOLOGY, Prin. of	.75	LOGARITHMIC & Trig. Tables	.40
BIOLOGY, General	1.25	MID. AGES, 300-1500, Hist. of	.75
BOTANY, General	.75	MUSIC, History of	1.00
BUSINESS LAW	1.00	PHILOSOPHY, An. & Mod.	1.50
CALCULUS, 2e	1.25	PHILOSOPHY, Readings in	1.25
CHEMISTRY, First Year Col.	1.25	PHYSICS, First Year College	.75
CHEMISTRY, Math. for Gen.	.75	PHYSICS, Principles of	1.25
COMMERCE, General	1.00	POLITICAL SCIENCE	.75
COMPOSITION FINANCE	1.00	POLITICS, Dis. of America	1.25
DOCUMENTED PAPERS, Wash.	.75	PORTUGUESE GRAMMAR	1.25
ECONOMICS, Principles of	.75	PSYCHOLOGY, Introductory	.75
EDUCATION, History of	1.25	PSYCHOLOGY, General	1.00
ENGLAND, History of	.75	RUSSIA, History of	1.50
EUROPE, 1500-1643, Hist. of	1.00	SHAKESPEAREAN Drama, Dict.	1.00
EUROPE, 1643-1715, Hist. of	1.00	SHAKESPEARE'S Plays, Out. of	1.25
EXAMS, How to Write Better	.25	SHAKE-SPEARE, Hist. of	.75
FORESTRY, Gen. Outline of	1.25	SOCIOLOGY, Principles of	1.25
FRANCE, GRAMMAR	1.00	SPANISH GRAMMAR	1.25
GEOLOGY, Principles of	1.00	STATISTICAL METHODS	1.25
GEOMETRY, Plane, Prob. in	1.00	STUDY, Best Methods of	1.00
GERMAN, GRAMMAR	1.00	TRIG., Plane & Spherical	1.25
GOVERNMENT, American	.75	TUDOR & STUART Plays, Out.	1.25
GRAMMAR, ENG. Prin. & Pp. of	1.25	U. S. in Second World War	.75
GRAMMAR, Lat. First Year	1.00	U. S. in 1848, History of	.25
JOURNALISM, Survey of	1.25	U. S. in 1918, History of	1.25
LATIN AMERICA, History of	1.50	WORLD, Since 1914, History of	1.00
LAT. AMER. CIVIL. & ECON. H.	1.25	ZOOLOGY, General	1.00
LAT. AMER. Economic Dev.	1.25		

PRICES SUBJECT TO CHANGE

## The Exchange Store

"Serving Texas Aggies"

Main Campus — TWO STORES — A&M Annex



Elio Nohavita, sophomore guard from El Campo, was one of the outstanding linemen on the Fish team last year and is expected to develop into a seasoned varsity performer before the season is over.

We Deliver

CLEANING . . . .

PRESSING . . . .

ALTERATIONS . . . .

PATCHES . . . .

WEAVING . . . .

SMITH CLEANERS

North Gate Phone 4-4444

WE GIVE S&H GREEN STAMPS

You Bet It Looks Sharp . . .

I SEND IT TO

CAMPUS CLEANERS

(Over The Exchange Store)

Real Deal for Pleasure

Smoke KENTUCKY CLUB

"LOOK FOR THE BLUE TIN WITH THE RED RIDER"

Pretty girl, mellow pipe, the mild, smoo-o-th taste of Kentucky Club—man, that's living! Enjoy this friendly blend of real White Burley—Treat Yourself to the Best!

Listen to "THE FISHING and HUNTING CLUB"—Mutual Network every week

## The Battalion QUARTERBACK CLUB

— This Week —

Wednesday

— at the —

ASSEMBLY HALL

ALL A & M STUDENTS ADMITTED FREE

See Movie of TEXAS A&M — LSU. GAME

Enter The Quarterback Club Contest

11 WINNERS EVERY WEEK

Prizes Presented at Quarterback Club Meeting Wednesday