

Gabbard Hears Truman Address At NPA Meeting in Washington

L. P. Gabbard, head of the Agricultural Economics and Sociology, Department was in Washington, D. C., recently as a member of the National Planning Association.

Association members were addressed by President Harry S. Truman, Secretary of Labor Maurice J. Tobin, Secretary of Agriculture Charles F. Brannan, ECA Director Paul G. Hoffman, and Geoffrey Crowther, editor of the London Economist.

President Truman made an off-the-record talk to the group in which he complimented the NPA program and expressed his long-time interest in planning to improve local and national government and to improve international relations. Gabbard said the president was pleasant and chatty and did not try to be profound.

Secretary of Labor Tobin, who is sponsoring a bill to remove restrictions on labor organizations, emphasized the importance of collective bargaining before the NPA group.

ECA Director Paul G. Hoffman said real progress had been made in the economy of Western Europe and seemed optimistic about the future. Secretary of Agriculture Brannan indicated his willingness to cooperate with planning groups and told NPA members that the main objective of the U. S. Department of Agriculture was to bring about conditions that would enable farmers to live as well as non-farmers.

Gabbard said the cleverest talk delivered at the meeting was given by Geoffrey Crowther, editor of the London Economist. Crowther reviewed the nationalization movement in Great Britain and pointed out that its development had not thus far brought about the downfall predicted by its opponents. Neither has it been the panacea promised by its most staunch advocates he said.

ELECTIONS

(Continued from Page 3)

called for a five man run off in the races originally having six or more entrants. For those positions where less than six men entered only two men will appear in the run off. The next ballot will be distributed as soon as an official count can be made and the ballot printed, officials said.

All offices seemed to require run offs except that of Veteran's vice president, according to the official tabulators.

Crowther did not feel that the nationalization movement had yet made a very great economic change in Great Britain. He advocated limiting government activities to dealing with broad general controls such as currency, and not concern itself with small details.

Gabbard is a member of the Committee of the South, a subcommittee of NPA which is studying and promoting industrial development of the South for better utilization of national and human resources. He has been a member of the committee since it was established in 1946.

Hammer Joins IE Department

Garland G. Hammer has joined the staff of A&M's Department of Industrial Education as an associate professor, according to Chris H. Groneman, head of the department. His appointment was effective at the beginning of the spring semester.

Hammer, who has been assistant professor of industrial education at the University of Oklahoma since 1946, has had long experience in industrial teaching, in colleges and public schools as well as for the U. S. Navy and the General Motors Corp.

Among public schools in Texas where he has taught are Belton, Beaumont, Whitney, Baytown and Dallas. During the war he prepared manuals and trained teachers for the Naval Air Technical Training Center and Radio Material School at Chicago. Later he was executive trainer at the General Motors Institute of Technology.

Sam Rowe Member Of Student Life

Sam A. Rowe, senior agricultural administration student from Texas City, has been named to the Student Life Committee for the remainder of this season.



Architectural student BOB REED and his wife, BETTY, try on their "costumes" for the architect's ASABAB dance next Saturday. The theme will be song titles, and if you can't guess this one we won't tell you what it is.

H. Heady Receives Ph.D. at Nebraska

Harold F. Heady, associate professor in the Range and Forestry Department, received the degree of doctor of philosophy at the mid year commencement exercises of the University of Nebraska.

Heady obtained his degree in botany under the direction of Dr. J. E. Weaver, plant ecologist, and his minor work was in the field of agronomy. His doctorate thesis

was concerned with the factors affecting forage production and utilization on bluebunch wheat grass ranges in Montana.

Work on this thesis was conducted while Heady was a member of the Department of Animal Husbandry and Range Management at Montana State College. He has been a member of the teaching staff at A&M since 1947.

Regulations Governing Reserve Books Announced by Librarian

Regulations governing reserve books in the Cushing Memorial Library have been announced by Paul S. Ballance, librarian.

Reserve books and required reading books should not be confused, Ballance stated. Reserve books are designated by a professor as supplemental texts with definite assignments. These books are placed on a separate shelf and restricted to two hours use in the building during the hours in which the library is open.

Ballance continued by saying that the reserve books may be checked out for overnight use one hour before the library closes and are due one hour after the library opens the next day. All books placed on reserve whether library copies or departmental copies are subject to the regulations governing reserve books.

Required Reading
Required reading books are those that are placed on a special shelf, and are intended to supplement the class text. The student

IE Students Offer Driving Directions

Any person interested in learning to drive a car or wishing to gain practice to pass an examination to obtain a driver's license may call the Industrial Education Department and a student will be provided to do the instructing, Chris H. Groneman, head of the department, announced today.

Students taking an Industrial education course are interested in teaching others how to drive. In order for them to gain the practical application of the course it is desirable that they teach others how to drive, Groneman continued. A nominal charge per person will be paid to defray the cost of gasoline and oil, Groneman concluded.

Lynch Will Attend Saint Louis Meet

S. A. Lynch, Geology Department Head, will attend the 34th annual Geologists Convention to be held in St. Louis, March 14-17. This convention is a tri-organizational affair comprised of the American Association of Petroleum Geologists, the Society of Economic Paleontologists and the Society of Mineralogists.

Carlton D. Speed, Houston Geologist, estimates that approximately 500 geologists will attend the tri-organizational conference.

Cliffe Will Lead Aero Students

R. T. Cliffe Jr., of Houston, was elected chairman of the Annex branch of the Institute of Aeronautical Science at a meeting of the aeronautical students last week. A. J. Craig from Dallas was chosen vice-chairman, while K. G. Van Tassel of San Antonio was elected secretary. All are aeronautical majors.

The IAS meets at the Annex every two weeks on Wednesday nights at 6:30 in the Engineering Drawing Building. C. L. Turner, chairman of the campus organization, was present at the last meeting. Other campus members are expected to appear at the future meetings to aid and explain the curriculum of study to the Annex club members.

Assistants Needed To Grade Problems

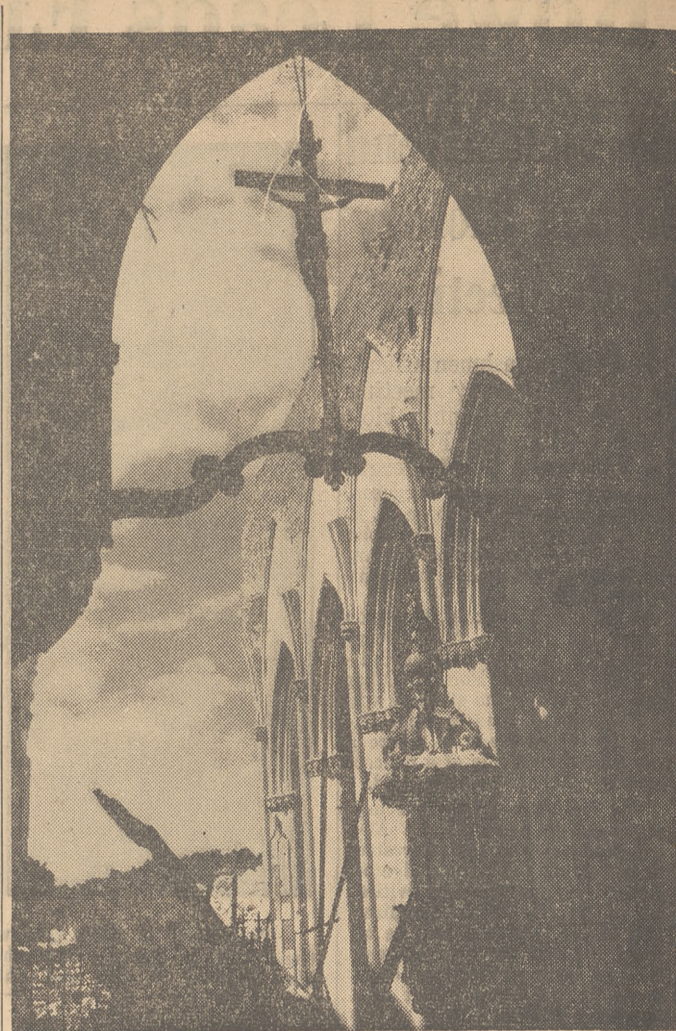
Student assistants are needed for problem grading in the physics department on a weekly schedule at their individual convenience. Dr. J. G. Potter, head of the Physics Department, has announced.

Men who have completed sophomore physics courses with superior records are invited to apply at the department office, Potter said. The pay will be 60 cents per hour.

New Training Unit To Be Formed Here

College Station has been allocated another organized reserve corps training unit, Colonel Oscar B. Abbott, executive officer for the Texas Military District, announced today.

Although the New York Giants hit 57 less homers in 1948 than they did the previous year, their 1948 total of 164 still led the National League by 56.



The Cathedral of St. Lo in Normandy is one of the photographic panels on display this week in the Architecture Department on the fourth floor of the Academic Building. The panels are entitled Fine Arts Under Fire and were assembled by Life Magazine in collaboration with the American Commission for the Protection and Salvage of Artistic and Historic Monuments in War Areas.

Generator Given To EE Department

The Electrical Engineering Department has been given a 5 kilowatt DC generator by the manufacturer, the Louis-Allis Company. The generator will be installed in the machinery laboratory in Bolton Hall, to be used by electrical engineering students, according to M. C. Hughes, head of the department.

Campus Capers - Let's Learn

Johnny

HOISTS HECTOR TO THE APOGEE OF POLITICAL PREDOMINANCE

HEC, I'M NO HARBINGER OF RUIN, BUT IF YOU CONTINUE BEING NASTY, YOU'LL NEVER BE PRESIDENT OF THE STUDENT UNION

HEC, YOU'VE GOT CIGARETTE HANGOVER. THAT'S WHY YOUR THROAT'S RAW AND YOU'RE IRRITABLE. WHY NOT CHANGE TO PHILIP MORRIS THE ONE LEADING CIGARETTE PROVED DEFINITELY LESS IRRITATING?

OH MY! A WOULD-BE PRESIDENT SHOULDN'T HAVE CIGARETTE HANGOVER.

SO GENTLEMEN, IF YOU ELECT ME PRESIDENT, REST ASSURED I WILL BEAR THE IMPERATORIAL YOKE AS LIGHTLY AS A TEN-TON ANVIL

HEC IS REALLY 'SENDING' THOSE BOYS, WATCH HIM IN THE COMING STUDENT ELECTIONS!

HEC WON'T FORGET HOW PHILIP MORRIS HELPED HIM GET RID OF CIGARETTE HANGOVER TOO!

I THANK YOU FOR ELECTING ME HEAD OF THE STUDENT BODY AND I PROMISE THAT BODY WILL NO LONGER APPEAR TO HAVE SUFFERED DECAPITATION.

Re-vivify your vocabulary

APOGEE (ap-o-jee) - A climax or culmination.

BADINAGE (bad-i-nij) - High class wise-cracking.

CIGARETTE HANGOVER (Don't pronounce it; get rid of it!) - That stale smoked-out taste; that tight dry feeling in your throat due to smoking.

CIMMERIAN (sim-air-i-an) - Dark as a witch's cupboard.

ELEEMOSYNARY (el-ee-moss-in-ah-ree) - in the free or "hand out" class.

GLAMAMAN (glam-ah-man) - Masculine of "glamagal" (a "neologism", see below)

HARBINGER (har-bin-jer) - a herald or forerunner.

IMPERATORIAL (im-pair-ah-tor-yal) - Commanding or top brass.

NEOLOGISM (nee-oh-a-jizm) - a newly-coined word.

PERIPHRAISIS (per-if-rah-sis) - saying little in many words, or hot air.

All good stories point a moral:

Behind the playful plot, our intentions are serious: we want you to discover for yourself the welcome DIFFERENCE and the extra pleasure in smoking that PHILIP MORRIS can bring you.

Established proof of this DIFFERENCE is too extensive to be detailed here—but pre-medical and chemistry students, who will be particularly interested, can get this PROOF in published form FREE by writing our Research Department, Philip Morris Co., 119 Fifth Ave., N. Y.

CALL FOR PHILIP MORRIS

The New ...

CHARLIE'S

FOOD MARKET

College Station Free Delivery North Gate
Phones 4-1164 — 4-1165
Delivery Hours — 10 a.m. — 4 p.m. Store Hours — 7:30 a.m. — 6:30 p.m.

SPECIALS FOR FRIDAY & SATURDAY — 18TH & 19TH

★ MEATS ★

SWIFT'S SUGAR CURED HAMS
4 to 7 pounds each
44c per pound

ARMOUR'S STAR
Franks . . . 1 lb. cello 46c
Fresh Ground Beef . lb. 45c
Veal Cutlets lb. 75c

★ FROZEN FOODS ★

PIE OF THE MONTH
Cherry Pies . . . Each 52c

GLAZIERS
Blackeye Peas . . Pkg. 21c
HONOR BRAND SLICED
Strawberries . . . Pkg. 48c

FRESH FRUITS
VEGETABLES
WHITE SQUASH . . lb. 15c
ONIONS 2 lbs. 9c
CALAVOS Each 15c
Extra Large Stalks
CELERY each 23c

Juicy Texas
ORANGES . . 5 lb. bag 29c

IMPERIAL PURE
Cane Sugar . . 5 lb. bag 44c

PARD, CANNED—16 oz. cans
Dog Food 2 cans 27c
PINE CONE WHITE CREAM STYLE
Corn 2 No. 2 cans 27c

Try Us for Courteous Service and Delivery CHARLIE

★ GROCERIES ★

MRS. TUCKER'S
Shortening . 3 lb. pkg. 67c

SALT
Free Running or Iodized
2 pkgs. 15c

DOLE'S
Pineapple Juice . 2 cans 31c

ROYAL—(Five flavors)
Jellatin Desert . . Pkg. 5c

CHASE & SANBORN'S—4 oz. jars
Instant Coffee . 2 for 49c

BREAST 'O' CHICKEN—Reg. size
Fancy Tuna 44c

NEW WINDSOR SIFTED—No. 2 cans
Peas 2 for 27c

CLOROX BLEACH
Quarts 15c
1/2 Gallon 27c

WATER RESISTANT—Made by Diamond
Matches 2 boxes 5c

OXYDOL
Regular Size . . 29c
Giant Size . . . 79c

VAN CAMPS—303 can
Chili Con Carne

30c

HIGH QUALITY

• RECORDS • RADIOS
School & Office
Supplies
ALL YOUR NEEDS
HASWELL'S