

The Veteran Battalion Staff, commanded by HELMUT QUIRAM, is seen passing near the reviewing stand in Austin. They are followed by the veteran companies.

Washington Used Car Dealer Defends 'Favoritism' Policy

WASHINGTON, Dec. 1 (AP)—A Washington area Chevrolet dealer yesterday defended his firm's policy of favoring buyers who have old cars to trade in on new ones.

Lawrence Kenyon, vice-president and treasurer of Kenyon-Peck, Inc., of Arlington, Va., told a house sub-committee investigating trade practices:

"I think it is important for us to try to even up our business with good, profitable deals on trade-ins."

John T. M. Reddan, committee counsel, said Kenyon-Peck records show that 70 percent of the firm's new car sales the first seven months of this year involved trade-ins.

Reddan asked Kenyon whether there is any significance in such proportions.

"I think so," Kenyon replied.

"We are always on the look-out for profitable deals."

Rep. Macy (R-NY) the sub-committee chairman, has said his group decided to inquire into operations of Washington Area car dealers as representative of the entire country.

As the hearing began, Macy said in a statement that the committee started investigations several months ago in response to a public demand for action from Congress on trade practices in rail fields.

FILMS BID FOR PRINCESS

STOCKHOLM—(AP)—Five-year-old Princess Christina may soon become the heroine of a fairy-tale.

The princess, who is the daughter of Sweden's widowed Princess Sibylla and Prince Gustaf Adolf, killed in a plane accident last year, has been considered for the lead in a motion picture for Svensk Film-

He reported that his office is getting hundreds of letters daily from all over the country, and added:

"The story seems to be the same everywhere—tips to salesmen, low values on trade-ins."

His house subcommittee on auto sales heard evidence two weeks ago that salesmen for two Washington new car dealers took tips of \$400 and \$500 regularly from their customers. Yesterday, it took a look at the trade-in policies of one of the nation's largest Chevrolet dealers.

Benjamin Ourisman, president of Ourisman Chevrolet Inc., and the Mandell Chevrolet Co., told the committee his firms follow waiting lists "as far as is humanly possible." He said they do not require that prospective buyers have used cars to trade in.

Two committee investigators testified later that the record of June sales by the two firms showed that buyers without trade-ins had waited an average of 14 months for new cars, while those with trade-ins had waited an average of 50 to 54 days.

One witness said he was allowed \$5 for a 1936 Studebaker which the company resold for \$200. Another said he was allowed \$1,352 for a 1947 Chevrolet which the company later resold for \$2,100.

industry, the Swedish artist Emar Nerman said. So far, Princess Sibylla has not decided whether to accept the offer, he added.

Nerman sailed for the United States aboard the Swedish American liner "Stockholm." He is going to New York to work as a cartoonist.

Southwestern Livestock Show Entries Due

FORT WORTH, Dec. 2, (AP)—A record of nearly \$100,000 in premiums is offered exhibitors in the 1948 Southwestern Exposition and Fat Stock Show here Jan. 28—Feb. 6.

The deadline for livestock entries, announced by W. A. (Bill) King, general livestock superintendent, is Dec. 13, while horse show exhibitors have until Jan. 5 to enter. Livestock premiums total about \$67,000. Over \$22,000 in premiums will be offered horse show exhibitors.

In line with the trend of other major shows, open class fat steers will be judged by age rather than weight.

For the first time in the Exposition's history, Brahman cattle will be shown. Another new event will be the Grass Judging contest for 4-H Club and FFA members. After a lapse since 1942, poultry, turkeys and rabbits will again be exhibited. About \$2,500 in premiums will be offered.

General Manager Edgar Deen said more than \$75,000 has been spent paving walks, roads and parking areas and putting covers on the carlot stock sheds. The show plant at the Will Rogers Memorial Coliseum grounds now represents an investment of over \$3,000,000.

Menger Hotel In San Antonio To Be Modernized

SAN ANTONIO, Tex., Dec. 2—(AP)—San Antonio's historic old Menger Hotel, built before the Civil War, will be enlarged and modernized.

The picturesque structure across the street from the Alamo, will have a four-story addition of 125 rooms.

It was in the Menger's old-fashioned bar that Teddy Roosevelt recruited Texans to join the Rough Riders.

The bar will be dismantled and incorporated into the modern addition.

Notables who have signed the Menger register include Gen. U. S. Grant, Benjamin Harrison, Phillip H. Sheridan, "Buffalo Bill" Cody and John J. Pershing.

Architects for the improvements make it plain that none of the charm and dignity of the old building will be lost.

The new addition will be built on the site of a parking lot and the old Albert Frederick Building which will be wrecked.

A glass partition will separate the new lobby and the patio behind the hotel.

Hart to Manage New Radio Store

Charles Hart, class of '48, will manage the Aggie Radio and Appliance Company, soon to open at the North Gate.

The appliance concern, a branch of the United Appliance Company in Bryan, has been in business at East Gate for several years.

The Aggie Radio and Appliance Company will stock the latest in Westinghouse Appliances, as well as other leading brands of electrical equipment. The store will also feature an ultra-modern record bar with sound proof record booths, Hart said.

Experiment Station Hopes for Greater Texas Through Engineering and Industrial Research

By BILL ROSE
"A greater Texas through engineering and industrial research" keynotes present activities of the Texas Engineering Experiment Station on the A&M Campus.

Financial income from trees used as windbreaks; essential oil from weeds; home insulation by cottonseed by-products; household water heating from the ground; and more reasonable shipping of Texas produce to Eastern markets are but a few of the experimental studies in progress by A&M engineering researchers.

Major problems submitted by industries, governmental agencies, technical societies, and individuals are set up as experimental projects in the various laboratories. A technical infor-

mation service is offered on problems of lesser scope. Immediate administrator of the station is Dr. A. W. Melloh, vice director, who coordinates the research program. Dean H. W. Barlow of the School of Engineering serves as director. Main facilities of the Station are chemurgic, structural engineering, freight rates studies and fan testing laboratories.

The Cottonseed Products Research Laboratory, which is operated jointly by the Cotton Research committee of Texas and the Texas Engineering Experiment Station, is internationally known. Under the direction of A. Cecil Wamble, manager, the research program is conducted to utilize to the utmost cottonseed as a by-product.

Present research covers cottonseed varieties studies, oil extraction methods, X-ray treatment for growing, and use of hulls as an insulating material.

A propeller fan testing laboratory was started in the Engineering Experiment Station in 1937 as a service to the many small fan manufacturers in Texas and other parts of the United States with an over-all objective of bringing integrity to the entire fan industry through proper standardization of testing facilities and procedures.

Cooperating with the laboratory is the Propeller Fan Manufacturers Association, Detroit, Michigan, nation-wide organization of axial fan manufacturers, which has named the Texas Engineering Experiment Station facility its sole testing laboratory. The association encourages its members to do their testing through the laboratory in order that all ratings might be based on standard procedures.

The chemurgic laboratory under Dr. B. R. Holland, conducts chemical research. Its studies at present concern developing products from both uncultivated and cultivated plants and trees of Texas for commercial production.

The Chinese Tallow Nut tree, which was introduced in Texas several years ago by the Forest Service for its utility as a windbreak as well as for its soil improving qualities, is under experimentation by the laboratory. Suitable uses for its fruit are being determined in order that its propagation will be economically feasible in rural areas.

About 50,000 of the Chinese Tallow Nut trees have been planted in the Houston area for landscape ornamentation. Chemurgic researchers are also developing essential oils from uncultivated plants found growing throughout the state.

Agronomy Society Elects Kelling Vice-President

Willie A. Kelling was elected vice-president of the Student Section of the American Society of Agronomy at the annual convention held in Chicago, Illinois, November 27.

Kelling is a junior agronomy major from Chapel Hill, Texas. He was the A&M alternate on the 1948 Crops Judging Team and is vice-president of the Lutheran Student Association.

Twenty-two student agronomy societies from various parts of the country were represented at the Chicago convention. The Texas A&M Agronomy Society, consisting of 119 members, was the second largest group represented, topped only by Oklahoma A&M College with 125 members, Kelling said.

Delegates to the convention from A&M were Kelling and Virgil Caraway, president of the local Agronomy Society.

AIEE to Hear GE Engineers Tonight

George N. Pingree, General Electric engineer in Dallas, will speak on lighting at a meeting of the AIEE-IRB tonight, Norman F. Rode, electrical engineering staff member and chapter sponsor, said yesterday.

The chapter will meet in the Electrical Engineering Building Lecture Room, at 7:30 p.m., Rode added. The meeting is open to the public.



SAM T. BOSWELL cashes in on a free pass to the Campus Theater. He received pass through the Battalion classified ad section.

Texas Congressmen Slated For Important Committee Positions

By TEX BASLEY
AP Special Washington Service

WASHINGTON, Dec. 2 (AP)—Texas is about to get a place once more on the powerful House Rules Committee.

Rep. John E. Lyle, Jr., of Corpus Christi, is the man. If he makes the grade, he will be the first Texan to serve on the committee since Martin Dies of Orange, who lost a reelection contest four years ago.

Although the Rules Committee has little glamor for the man of the street, it is exceedingly important. It acts as a sort of traffic cop for all legislation reported out of other committees and headed for the House Floor. If it chooses it can bottle up a measure indefinitely.

A few members of this committee in the past have used this procedure to block Administration bills carrying the approval of committees which had studied them thoroughly.

Lyle has acquired a reputation for his independence on roll call votes, but his friends say he would favor sending a bill to the House Floor for settlement by a majority vote even though he personally might oppose it.

Rep. J. M. Combs of Beaumont

The stability of economically built highway bridges for generations of progress in commercial vehicle traffic is a consideration under study for the Public Roads Administration in the structural engineering research laboratory.

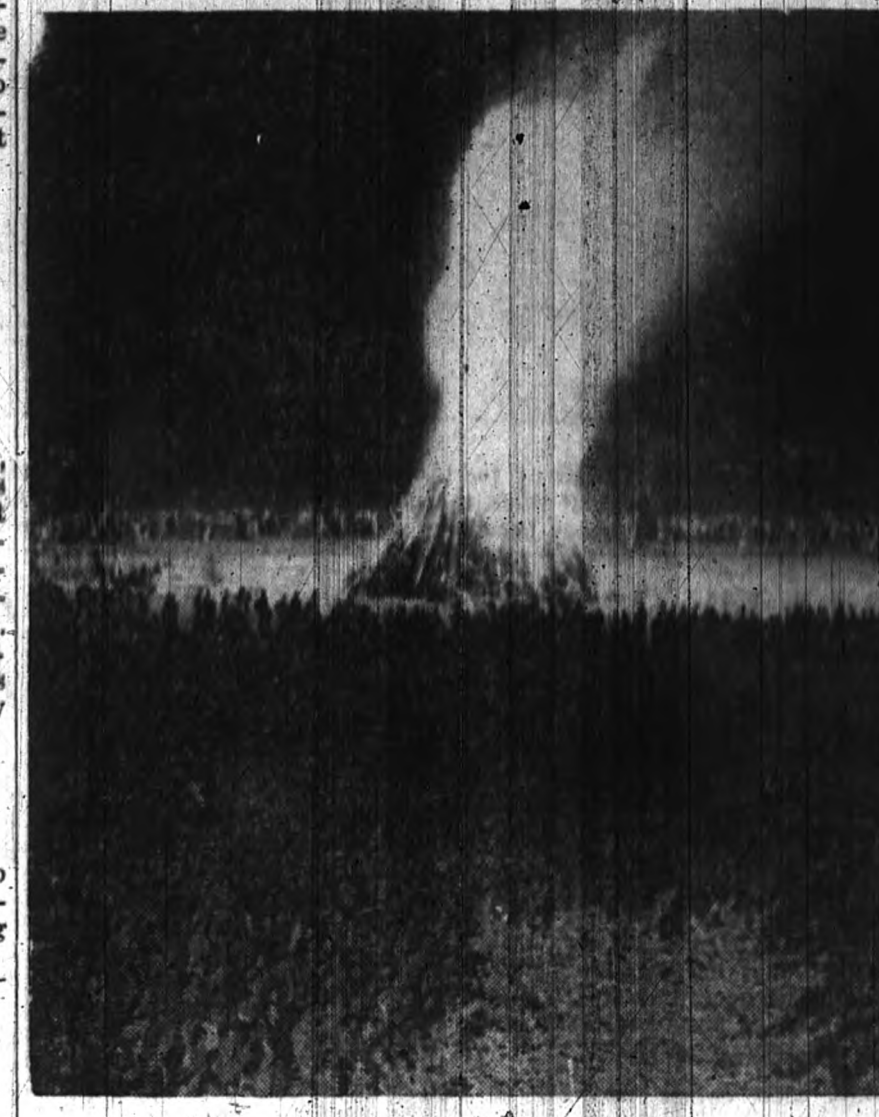
These studies, conducted under Prof. H. K. Stephenson, manager of the laboratory, concern frequencies of various groupings and sizes of trucks in travel over bridges.

During the past ten years freight rates studies have been conducted on a continuing basis as a service to Texas shippers of produce to the Eastern markets. The studies are under the direction of W. B.

Langford. Reverse cycle refrigeration for heating through utilization of the earth as a heating source is under study by Donald M. Vestal, Jr., on a project conducted in cooperation with the A&M Research Foundation.

Through similar arrangements, aeronautical research involving high-lift devices is in progress at the Personal Aircraft Research Center under the direction of Fred R. Weick.

Published technical material on A&M research efforts is available upon request in the form of Station bulletins.



The bonfire burns as Aggie football team members tell the assembled crowd about Thanksgiving Day plans for Texas University.

SHOP EARLY!

A wonderland of toys for good girls and boys from which to choose the dolls that will win the hearts of little girls, the games, the sleds, the various gifts that will thrill little boys.

"Use Our Lay Away Plan"

Immie's Toy 'n Tot Shop

"Sells for Less" 1001 S. College Ave. Phone 4-1618

CONGRATULATIONS

to

HASWELL'S

on Opening of The

Decorator's Shop

at

East Gate — College Station

We are happy to be associated with the Decorator's Shop in supplying the people of Bryan, College Station, and A&M College with our products. We wish every success to Haswell's in this new step forward toward greater service to people in the Bryan-College Station area.

Distributors of—

- NORGE REFRIGERATORS & APPLIANCES
- ZENITH RADIOS AND APPLIANCES
- M. G. M. PHONOGRAPH RECORDS

Automatic Distributing Co.

HOUSTON, TEXAS

Congratulations:

TO

HASWELL'S

On the Opening

Of the New ...

Decorator's Shop

We are happy to have the finest and most completely stocked Decoration and Gift Shop serving College Station carry our products.

Binswanger Glass Company

HOUSTON, TEXAS

NOW OPEN FOR BUSINESS . . .

THE NEW

Decorator's Shop

at East Gate, College

BY

Haswells

Since 1888

- FULL LINE OF COOK'S PAINTS
- PAINTING ACCESSORIES
- DECORATIVE APPOINTMENTS
- COUNSELING SERVICE ON HOME DECORATIONS

—Complete Stocks of the Following Name Brands in Wallpaper—

Bigge United James Bute Imperial
Cook's Sunworthy Prager Vogue Star-Feeless
York White Rose May Flower Wood Davis

PHONE: 4-1269 EAST GATE, COLLEGE