

Professor of Ag Education Leaves For Mississippi

Henry Ross, professor of agricultural education at A&M, left Wednesday for Mississippi to assist agricultural education personnel in that state to initiate agricultural education workshop procedure.

Teachers of vocational agriculture in Texas have had the advantage of using the workshop procedure since 1943 when the first course was instituted at A&M.

The procedure is different from the academic method in graduate work. Teachers are assigned to fields of their special interests to do research on a particular problem. Committees report daily and the entire group is given the benefit of the work done by each committee.

Professor Ross was invited to inaugurate the workshop procedure in Mississippi by the agricultural education department of the Mississippi State College. He will spend two weeks in directing the work.

The workshop procedure has met with favor in Texas, Ross said. The enrollment in the first course offered by Ross was 17 and the present enrollment of vocational agriculture teachers in graduate workshops is 75.

Ross has been with the agricultural education department at A&M since 1935. Prior to his appointment as professor, he was an Area Supervisor and teacher of vocational agriculture.

WHO WILL BE OUR NEXT PRESIDENT?

44% of Students Plan to Vote for Truman; Dewey Will Receive 36%, All Rest Undecided

By DUDLEY BURRIS

Forty-four percent of the students interviewed recently stated that they would vote for Truman for president in the fall if he should win the Democratic nomination.

In an interview conducted by The Battalion, Monday afternoon, students, college employees, professors, and visitors were asked three questions concerning their views on the coming Democratic National Convention.

The three questions asked were: "Who do you think the Democrats will choose for their presidential candidate next month? Who do you think will be the vice presidential choice? In the event Truman is the candidate, will you vote Republican to avoid voting for Truman?"

Of those interviewed 67% believed that Truman would get the nomination; 23% believed General Eisenhower would be nominated and 10% were either undecided or had no idea.

About 76% had no opinion as to who the Democrats would nominate for vice-president. Hughes was favored by 6% of the persons interviewed, and 3% of the persons contacted were for each of the following men: Connally, Byrd, Rayburn, Douglas, Marshall, and Berkley.

In regard to the final question of the interview, 44% were

in favor of voting for Truman on the Democratic ticket, 20% undecided, and 36% voting Republican, of whom 20% would vote Republican anyway.

Among those who would vote for a Republican rather than for Truman, William Kirkpatrick, a graduate student of 2208 East Twenty-fifth Street, Bryan, said, "I would vote Republican rather than for Truman because I think a Republican president would get along better with the Republican congress we now have."

Norman F. Bode of the Electrical Engineering Department said that he would vote for Truman, but

if Stassen or Vandenberg had been the Republican candidate, it would be a different story.

The campus seems to have a definite lack of interest in the Democratic Convention after the heated Republican struggle.

The overall attitude of the college is best summed up by Joe Meador of the Architecture Department who said, "I would not vote at all and pair my vote with someone. All this is subject to change when a definite platform is formed, particularly in regards to a strong no-appeasement policy with Russia, the Chinese Reds, and the Balkan situation."

L'L ABNER Next!!!

By Al Capp



Little Man—What Now?

By Al Capp



RELIGIOUS CALENDER

BAPTIST CHURCH

One block north of North Gate Rev. R. L. Brown, Pastor Sunday 9:45 a. m. Morning Worship, 10:30 a. m. Training Union, 6:15 p. m. Evening Worship, 7:15 p. m. Wednesday Prayer Meeting, 7:15 p. m. Nursery at all services.

SAINT MARY'S CHAPEL

Two blocks east of North Gate Rt. Rev. J. B. Gleisner & Rev. T. J. Valenta, Chaplains Sunday Mass, Sermon, and Holy Communion, 8:30 and 11 a. m. Newman Coffee Club, 10 a. m. Confessions before Mass on Sunday mornings.

A&M CHURCH OF CHRIST

One block north of North Gate James F. Howler, Minister Sunday Bible Class, 9:45 a. m. Worship Service, 10:45 a. m. Young People's Meeting, 6:15 p. m. Evening Worship, 7:15 p. m. Wednesday Prayer Meeting, 7:15 p. m. Nursery at all services.

A&M CHRISTIAN CHURCH

Assembly Room, YMCA Rev. Allen S. Watson, Pastor Sunday Morning Worship, 9:30 a. m. CHRISTIAN SCIENCE ORGANIZATION Assembly Room, YMCA Mr. P. B. Goode, Sponsor

LET AN

Aggie Student SERVICE YOUR CAR

GAS OIL EXPERT GREASING WASHING WAXING & POLISHING

STOP AT THE GULF STATION

1 block north Bronco Inn on Houston Hwy. Owned & Operated by J. W. Schmidt. A&M Sta. Vet - Class '50

Dr. John S. Caldwell

Optometrist Caldwell's Jewelry Store Bryan, Texas

GUY H. DEATON

Typewriter Exchange New & Used Typewriters Guaranteed Repairs 116 S. Main Bryan

AN OUNCE OF PREVENTION IS WORTH A POUND OF CURE

Our regular servicing of your car keeps it in A. No. 1 condition... assures you safe, smooth, carefree driving. Let us service your car every 1000 miles. It's the wise thing to do!

CALL 2-1376 FOR PICK-UP SERVICE

"1st In Service Because... We Put Service 1st"

Corbusier Chevrolet Co. Bryan, Texas

2-1585

DIAGNOSERS-FUR STORAGE MATTERS

AMERICAN

LAUNDRY FOR CLEANERS

2-1585

Official meeting first Thursday of each month, 7:30 p. m. Discussion group every Sunday at 11 a. m.

SAINT THOMAS EPISCOPAL CHURCH

South of the campus, across the drill field from Duncan Mess Hall Rev. O. G. Helvey, Vicar Sunday Holy Communion, 7:30 a. m. Morning Prayer and Sermon, 9 a. m. Church School, 10 a. m. Aggie Coffee Hour, 10 a. m. Evening Prayer, 6:30 p. m. Y. P. Service League, 7 p. m. Nursery at all services.

HILLEL SERVICES

YMCA - Chapel Friday Worship Services, 7:15 p. m. Wednesday Cultural Meeting, 7:15 p. m.

LUTHERAN STUDENT SERVICE

Assembly room on second floor of YMCA Rev. Fred Mgebroff, Pastor Sunday Sunday School and Student Bible Class, 9:30 a. m. Worship Service, 11 a. m. Cabinet Room.

A&M METHODIST CHURCH

One block east and one block north of North Gate Rev. James Jackson, Pastor Sunday Identical Morning Worship Services, 9 and 11 a. m. Sunday School, 10 a. m. M. Y. F., 6 p. m. Happy Gospel Services, 8 p. m. Wednesday Wesley Fellowship and Choir practice, 7 p. m. Nursery at all services.

THE A&M PRESBYTERIAN CHURCH

One block north of North Gate and one block west Rev. Norman Anderson, Pastor Sunday Sunday School, 9:45 a. m. Morning Worship, 11 a. m. Westminister Student Fellowship 6:30 p. m. Evening Worship, 7:30 p. m.

Steen Predicts Republican Victory In November Elections

By JIMMY MAMARCHEV

"The Republicans will win the next election easily. The Democrats have been in office for the past sixteen years. Nearly every twelve years there is a change." Those were the words of Dr. R. W. Steen, professor of history at A&M.

Thomas E. Dewey will win for sure, Steen said. There is hardly any other way out. In 1944, during the war and other international and domestic crises, the popular vote was very close even though Dewey lost out on electoral votes. Today the Democrats have nobody strong enough to run against Dewey and his party.

President Truman will run, and if nominated by the Democrats will have to choose a Southerner for his running mate. Steen believes that the man Truman will choose for vice presidential candidate will be Sam Rayburn. He is obviously the best choice and is against civil rights. Hardly anyone else in the South, who is vice presidential material, is able to hold that position.

Were Truman to withdraw from the race, then Eisenhower might be drafted and, as a result, Steen said, the Democratic chances would be much better. However, there is little chance that this will happen since Truman has given no indication of withdrawing and Eisenhower has said many times that he did not want to run.

There is no definite line that can be drawn between the two parties at present. The Republicans have controlled Congress for the past two years and yet few changes have been made. The civil rights question, which has caused so much contention in the South, has been brought up and fought over by both parties, but little will probably be done about it by either. If the Republicans take over next January they will probably lean towards big business more than the Democrats have in the past. In the problem of the armed services there is practically no difference of opinion.

There will probably be few changes in foreign policy, Steen said. There is a good possibility that the Marshall Plan will become stronger and also a good chance that the Republicans will be a little firmer in dealing with Russia. In spite of this possibility, there will probably be little basic change.

Dr. Steen believes that the next Secretary of State, if the Republicans win, will be John Foster Dulles. Dulles is a capable man who served on Wilson's advisory committee at the Peace of Paris. However, if for political reasons, Dewey is forced to

R. C. ECHOLS

Realtor Over Canada's Pharmacy Bryan Phone 2-6454

Attention!...

JUST RECEIVED WESTINGHOUSE—

Food Mixers Toasters Waffle Irons

AGGIE RADIO & APPLIANCE

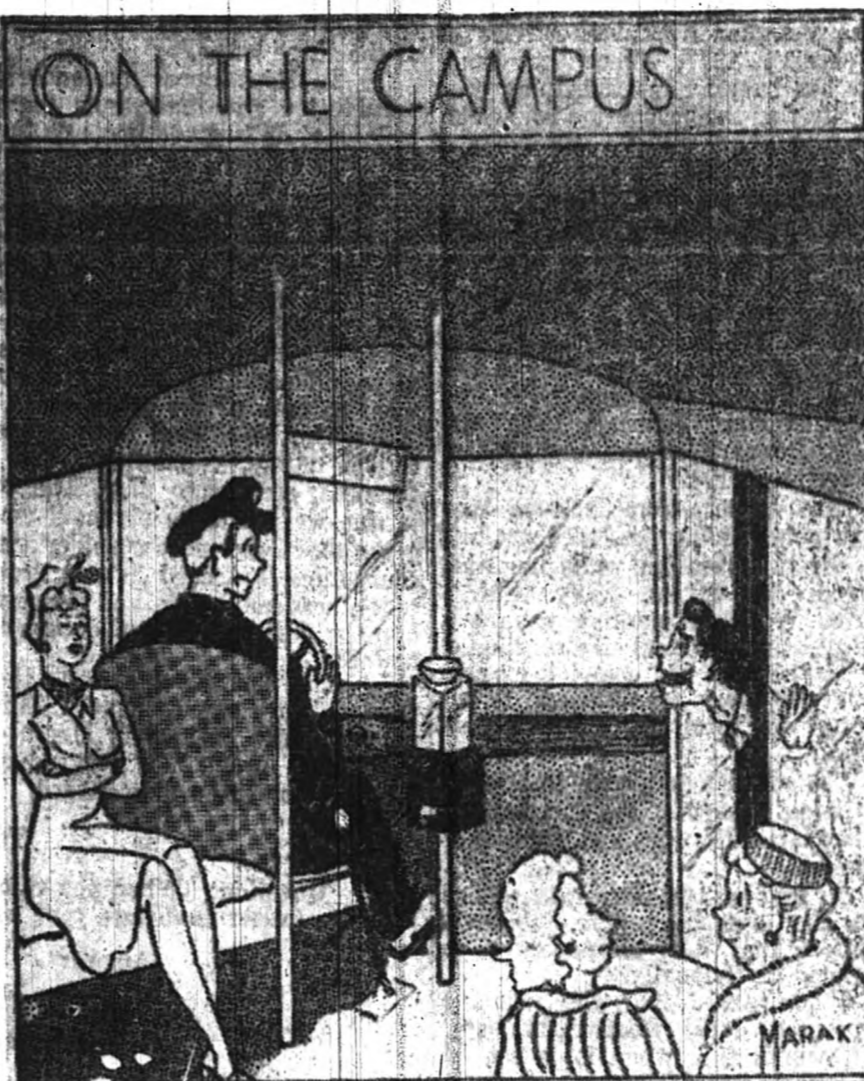
East Gate

Flights Planned For Out Of Town

The Charter Air Freight and Passenger Service of Waco, Texas, is making early plans to make air travel available for the out-of-town football games during the 1948 football season. Joseph Hahn, president, announced today.

Ten passenger charter flights are being planned to transport students to the different out-of-town games at very reasonable rates.

Various other flights are being scheduled to conform with distant events in track, basketball, baseball, and other sports functions, Hahn said.



"Say, mister, can I have my head back?"

FUN FOR ALL

3RD ANNUAL JAYCEE

INDEPENDENCE DAY CELEBRATION

JULY 5th

All Day Entertainment

COUNTRY CLUB

Bingo, Barbecue, Cake Walk, Pony Ride AND CANDIDATE SPEECHES

BATHING BEAUTY CONTEST AT BOMBER FIELD

8:30 P.M.

GIBSON'S IGA Super Market

Between Bryan and College, Houston Highway No. 6, South

OPEN 7:00 A. M. TO 9:00 P. M.—7 DAYS A WEEK

BRYAN'S LARGEST NEIGHBORHOOD STORE

PHONE 4-1222

SPECIALS FOR FRIDAY & SATURDAY

Gladiola Flour . 5 lbs. 39c	SWIFT'S Vienna Sausage . 2 for 33c
10 lbs. 75c	MAX Corn Chips . . . 2 1/2 19c
ADMIRATION Coffee . . 1-lb. pkg. 48c	FRENCH Mustard . . . 9-oz. 12c
LIBBY Tomato Juice . 46-oz. 29c	ALABAMA GIRL PLAIN Sweet Pickles . 8-oz. 19c
DELMONTE Catsup 14-oz. 19c	TETLEY ORANGE Pekoe Tea . . . 1/4-lb. 29c
Prem 12-oz. 45c	KELOGG'S 5 1/2-Oz. Rice Krispies . 2 for 29c
SWIFT'S Potted Meat 8c	CIGARETTES Your Favorite Carton \$1.63

PRODUCE

CALIFORNIA CRISP PASCAL CELERY each 16c	U. S. NO. 1 CALIFORNIA CARROTS . 2 lge. bu. 23c
EXTRA FANCY APPLES 2 lbs. 25c	CALIFORNIA SUNKIST — 432's LEMONS Doz. 26c
IGA Apple Jelly 8-oz. 11c	NO. 124 DIXIE Cold Drink Cups . . 10c
Royal Gelatine . 3 for 21c	NO. 3626 Hot Drink Cups . . . 15c
Bisquick 20-oz. 24c	BROOKFIELD AMERICAN Cheese 2 lbs. 99c
OLD DUTCH Cleanser 2 for 19c	BROOKFIELD PIMENTO Cheese 2 lbs. 99c
BAMA Peanut Butter . 1-lb. 28c	V. B. APPLE Sauce No. 2 14c
IDEAL Picnic Packages . . . 15c	

MEATS

TO BARBECUE VEAL BRISKET . lb. 42c	SQUARE CUT CHUCK ROAST . . . 59c
SWIFT'S PREMIUM CELLO FRANKS 47c	SWIFT PREMIUM FRYERS lb. 75c
Swift'ning . 1-lb. can 40c	3-lb can \$1.10
BAYER Aspirin 10c	WILDFLOO Cream Oil . . . 5-oz. 53c
GILLETTE Blue Blades 17c	LUSTRE-CREAM Shampoo \$1.00