

WTAW Batt Chat

Raymond Massey, screen and stage star, will be the guest of Radie Harris, WTAW commentator on affairs in the entertainment world, on Saturday, January 27, at 1:15 a. m., CWT. Massey plays a lead role in the motion picture, "Arsenic and Old Lace."

Edward Tomlinson, WTAW's authority on inter-American affairs, will be away from Washington and will not be heard on Saturday, January 27. On this date only, two veteran Washington newspapermen will substitute for Tomlinson—Allen Hayden, Washington correspondent for the Chicago Daily News, and William K. Lander, United Press Washington correspondent.

Tomlinson is heard each Saturday at 5:30 p. m., CWT.

With butter soaring into the red-point stratosphere, Home Economist Beulah Karney will offer a myriad of tips for extending this all-important culinary item on the What's Cookin' program, Saturday, January 27, at 9:00 a. m., CWT, over WTAW.

Accompanied by the Musical Chefs, tenor Earle Tanner will sing "A Little Bit of Heaven," "Let's Take the Long Way Home," "Thine Alone" and "Rose Marie."

A skit portraying the mass migration of young women in the hope of finding glamour and excitement in a war world will be enacted on the dramatic portion of the program.

Andy Russell, newest favorite of the teenagers, will make a command appearance on Philco's Radio Hall of Fame, Sunday, January 28, at 5:00 p. m., CWT, over station WTAW.

Sharing vocal honors on the program will be Ginny Simms, popular motion picture and radio songstress. Dick Powell will preside as master of ceremonies.

In the humor department, Gil Lamb, the hilarious comedy find of Paramount's "The Fleet's In," will be headlined.

Paul Whiteman's orchestra and chorus will furnish the musical portions of the program.

"Listen to the Mocking Bird" and "Meet Me in the Shadows" will be sung by the eleven-voice, a cappella chorus under the direction of Harry S. Walsh on the Aunt Jemima Show, Monday, January 29, at 9:25 a. m., CWT, over WTAW.

On Tuesday, January 30, the choristers will intone Victor Her-

bert's "Indian Summer" and "In a Little Spanish Town." Aunt Jemima, portrayed by Harriet Widmer, will have more cheery philosophy for her listeners. Don Dowd is the announcer.

A new arrangement of an old favorite, "You Made Me Love You," and "There Goes That Song Again" will be sung by Baritone Curley Bradley on WTAW's Farm and Home Makers program Monday, January 29, at 11:30, CWT. The Four Cadets will vocalize "Way Down Yonder in the Cornfield," "Song of the Seabees" and "He Is So Precious To Me." The Home Towners, under Rex Maupin's direction, will play "Rose Room" and "Suzette."

Ace Homemaker Kay Baxter will discuss new plans for the February holidays and Miranda, Persimmon Holler philosopher, will have more stories for her listeners.

Henry J. Kaiser, noted industrialist, will be the speaker on Saturday, January 27, at the Metropolitan Opera Victory Rally broadcast over WTAW as part of the presentation of Thomas' opera "Mignon." Kaiser will speak at 2:02 p. m., CWT on "Peace and Free Enterprise." His talk will be a part of the general theme of the series, "The Fight for Peace."

At the Opera Forum Quiz at 3:08 p. m., CWT, Olin Downes presides. The experts answering questions sent in by listeners are Sigmund Spaeth, Robert Bagar and George Marek.

Rice Stevens sings the title role in "Mignon" with James Melton, Mimi Benzell, Ezio Pinza and others. Wilfred Pelletier conducts. The performance is another in the series sponsored again this year by the Texas Company.

One of the most difficult, resourceful and effective medical feats of the present war will be described by the man who accomplished it when he appears on the WTAW broadcast of the Radio Hall of Fame, Sunday, January 28, at 5:00 p. m., CWT.

Lieut. Col. John K. Burns, a flight surgeon attached to the Army Air Forces Redistribution Center No. 3, Santa Monica, Calif., will tell how in the jungles of Burma he made an iron lung from bamboo, canvas and wire and saved the life of a lieutenant stricken with infantile paralysis. On the lighter side of the full-hour variety broadcast, Songstress Ginny Simms, Dick Powell and Andy Russell will join forces with Comedian Gil Lamb.

Paul Whiteman will conduct his Radio Hall of Fame orchestra in a salute to his fellow band leader, Meredith Wilson, now an Army major. Whiteman will play three tunes written by Wilson for the Army: "Yankee Doodle Girl," "Hit the Leather" and "Iowa."

When your match goes out be sure it can't come back. Be careful with fire in the woods.

LOUPOT'S A LITTLE PLACE - - - - A BIG SAVING!

STUDENT CO-OP Bicycle and Radio Repair PHONE 4-4114

ALTERATIONS LAUTERSTEIN'S Phone 4-4444

We have the most complete line of - - -

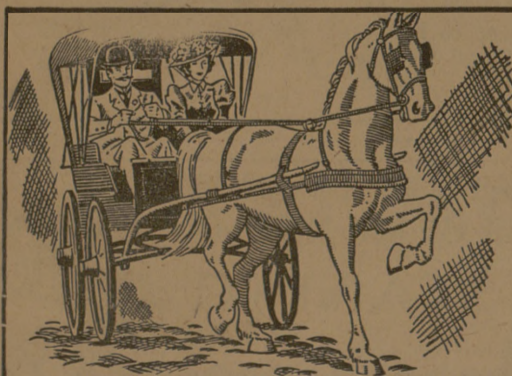
- VETERINARY BOOKS INSTRUMENTS SUPPLIES in the South

We will order anything on special request free of charge.

Let Lou put your name on your steel instruments free of charge.

WANT TO BUY LAMPS

LOUPOT'S TRADING POST



You're as OUT OF DATE as the Horse and Buggy. If You Don't Know SPANISH

SPANISH LESSONS OVER RADIO WTAW, MON., WED., FRI. AT 7:15

Labor Shortage Solved by Making Saving Equipment

Technical advice and encouragement will be given to Texas farmers this year to build homemade labor-saving devices as a means of relieving the indicated labor shortage. According to Caesar Hohn, state farm labor supervisor, this will be an expansion of the Extension Service regular farm labor program, with the Texas Agri-

LISTEN TO WTAW 1150 kc.—(Blue Network)

SATURDAY, JANUARY 27, 1945

- 6:00 Sign On Texas Farm & Home Prog. WTAW Sunup Club. WTAW News Summary. BN Arlo at the Organ. BN United Nations News. BN Off the Record. WTAW The Breakfast Club. BN What's Cooking. BN Land of the Lost. BN Songs by Jean Tighe. BN Kay's Canteen. BN Trans-Atlantic Quiz. BN Land of the Lost. BN Swingshift Frolics. WTAW WTAW NEWS. WTAW Nat'l Farm & Home Hour. BN Eddie Condon's Jazz Concert. BN Trans-Atlantic Quiz. BN Farm Fair/PEM. WTAW Farm Fair. WTAW Luncheon Tunes. WTAW Metropolitan Opera. BN Yiddish Broader. BN Harry Warner-Sports. BN Edward Tomlinson. BN Labor USA. BN Sustaining Music. BN Children's Vesper Hour. WTAW Sign Off. 7:15 Sign On 7:15 Football Game 10:30 Sign Off

SUNDAY, JANUARY 28, 1945

- 8:00 Blue Correspondents. BN Coast to Coast on a Bus. BN The Lutheran Hour. WTAW The Southernaires. BN Music by Master Composers WTAW Weekly War Journal. BN College Ave. Bapt. Church. WTAW P. M. 12:00 John B. Kennedy. BN 12:15 George Hick. BN 12:30 Sammy Kaye's Tangee Serenade. BN Your Sunday News Extra. WTAW Old Fash. Revival Hour. WTAW Listen, the Women. BN Miss Hattie. BN Darts for Dough. BN Set To Music. BN Mary Small Revue. BN Met. Opera Presents. BN Radio Hall of Fame. BN Drew Pearson. WTAW Week of Review. WTAW Sign Off

MONDAY, JANUARY 29, 1945

- 6:00 Sign On Texas Farm & Home Prog. WTAW Sunup Club. WTAW Martin Agronsky. BN Daily War Journal. BN Let's Learn Spanish. WTAW Blue Correspondents. BN Morning Melodies. WTAW Hollywood Headliners. WTAW The Breakfast Club. BN My True Story. BN Aunt Jemima. BN Between the Lines. WTAW Rosa Rio at the Organ. BN Breakfast at Sardi's. BN Gyl Martin. BN Jack Berch and His Boys. BN Glamour Manor. BN Meet Your Neighbor. BN Farm and Home Makers. BN P. M. 12:00 Bankhage Talking. BN WTAW Noonday News. WTAW Farm Fair/PEM. WTAW Songs by Pta. Marsh. BN John B. Kennedy. BN Mystery Chef. BN Ladies Be Seated. BN Songs by Morton Downey. BN Appointment With Life. BN Yours Alone. BN Time Views The News. BN Ambrose Haley. BN That's For Me. WTAW Church of Christ. WTAW Brazos Valley Farm & Home WTAW Dick Tracy. BN To Be Announced. BN Hop Harrigan. BN Terry and the Pirates. BN Treasury Salute. WTAW Jack Armstrong. BN Capt. Midnight. BN Six o'Clock News Journal. WTAW Raymond Gram Swing. BN Sign Off

TUESDAY, JANUARY 30, 1945

- 6:00 Sign On Texas Farm & Home Prog. WTAW Sunup Club. WTAW Martin Agronsky. BN Daily War Journal. BN Your Life Today. BN Blue Correspondents. BN Rosa Rio at the Organ. BN The Breakfast Club. BN My True Story. BN Aunt Jemima. BN Between the Lines. WTAW Rosa Rio at the Organ. BN Breakfast at Sardi's. BN Gyl Martin. BN Jack Berch and His Boys. BN Glamour Manor. BN Mid-Morning Melodies. WTAW Farm and Home Makers. BN P. M. 12:00 Bankhage Talking. BN WTAW Noonday News. WTAW Farm Fair. WTAW Texo Roundup. WTAW Carole O'Hara. BN John B. Kennedy. BN Mystery Chef. BN Ladies Be Seated. BN Songs by Morton Downey. BN Appointment With Life. BN Sincerely Yours. BN Time Views The News. BN Ambrose Haley. BN That's For Me. WTAW Keys of Faith. WTAW Voice of the Army. BN Dick Tracy. BN To Be Announced. BN Hop Harrigan. BN Terry and the Pirates. BN Something for the Girls. WTAW Jack Armstrong. BN Capt. Midnight. BN Six o'Clock News Journal. WTAW Raymond Gram Swing. BN Sign Off

OFFICIAL NOTICES Classified

FOR RENT to week-end guests or regular three nice corner rooms, three blocks from the post office. Call 4-4784.

LOST—Maroon and Gold Eversharp pen with initials E.P.S. engraved on the cap of pen. Please return to E. Stravolomos, Dorm No. 15, Room 204.

Would like to alternate use of car with someone near my Bryan address, 602 S. Washington, on daily trips to College. B. T. K. Mullins, Eng. Draw. Dept. Phone 2-1312 or 4-7294.

Will Aggie get my cap in the safe in Hearn, please return it. Thanks. Sessums, Room 320, No. 14 or T. R. Arnet.

Executive Offices

CHANGES IN THE OFFICIAL SCHEDULE OF CLASSES The following classes will meet as follows: Chem 101—General Inorganic Chem. (4) 50M MWSTh1 Th2-5 F. C. 402—General Ornithology (4) M3-5F1-5 500S MWJ Land 409—Protect, Conceal. Drop Math 102—Algebra (3) S1S MWF9 M. S. 121—Military Science (General) (1) 51T Th1 Lang 106—Beginning Spanish (3) 500S H. L. HEATON, Registrar.

Announcements

NOTICE TO ALL CONCERN After February 1, 1945, all dogs on Campus without current Rabies tags will be picked up.

Church Notices

FIRST BAPTIST CHURCH R. L. Brown, Pastor 9:45 a.m. Sunday School 10:30 a.m. Morning Worship 6:00 p.m. Training Union 7:00 p.m. Evening Worship A cordial invitation is extended to all who desire to worship with us.

COLLEGE AVE. BAPTIST CHURCH 203 N. College Ave. J. H. Landes, Pastor 9:45 Sunday School 11:00 Morning Worship Service 6:15 Training Union 7:30 Evening Worship Service 8:30 Young Peoples' fellowship hour.

THE FIRST CHRISTIAN CHURCH Corner Twenty-seventh and S. College F. J. Smythe, Pastor 10:00—Sunday School 11:30—Communion and Worship 6:00—Recreation Hour 7:00—Christian Youth Fellowship 8:00—Communion and Sermon A cordial welcome awaits all who attend this church.

CHURCH OF CHRIST R. B. Sweet, Pastor Sunday, 9:45 Bible classes; 10:45 the morning worship; 7 p.m. the evening worship. Wednesday 7:15 p.m. the Prayer Meeting. All are invited to attend all these services. You will be most welcome.

CATHOLIC STUDENTS Sunday Masses 9:15 and 10:30 a.m. Wednesday Mass 7:00 p.m. Confession Saturday 6:30 to 7:30 p.m.; Sunday, before Mass.

ST. THOMAS' EPISCOPAL CHAPEL The Rev. J. Hugh R. Farrell, Chaplain Septuagesima Sunday Holy Communion 9:00 a.m. Coffee Club 9:30 a.m. Church School 9:45 a.m. Holy Communion 11:00 a.m. The Bishop's Annual Address will be read at the 11:00 a.m. service.

AMERICAN LUTHERAN CONGREGATION Y. M. C. A. Chapel, Campus Kurt Hartman, Pastor Sunday School at 9:45 a.m. Student Bible Class and Discussion Period at 9:45 a.m. Divine Services 11:00 a. m.

A. & M. METHODIST CHURCH AND WESLEY FOUNDATION Rev. R. C. Terry Sunday: Church School—9:45 a.m. Morning Worship—10:50 a.m. Wesley Foundation—7 p.m. Wednesday: Choir Practice—6:45 p.m. Wesley Fellowship and Midweek Devotional—7 p.m. The A. & M. Methodist Church is one block east of the Post Office at the North Gate.

A. & M. PRESBYTERIAN CHURCH Norman Anderson, Pastor Sunday School 9:45 in the Campus Theatre. "By courtesy of the Management." Student League 6:30 in the Y. M. C. A. Chapel. Student Forum 7:30 in the Y. M. C. A. Chapel.

cultural Experiment Station and several agencies working with agriculture cooperating.

Initial steps toward an educational program with this objective were taken at a joint meeting of the A. and M. College Extension Service, Experiment Station, Agricultural Adjustment Agency, Soil Conservation Service, and Vocational Educational Service on the College campus recently.

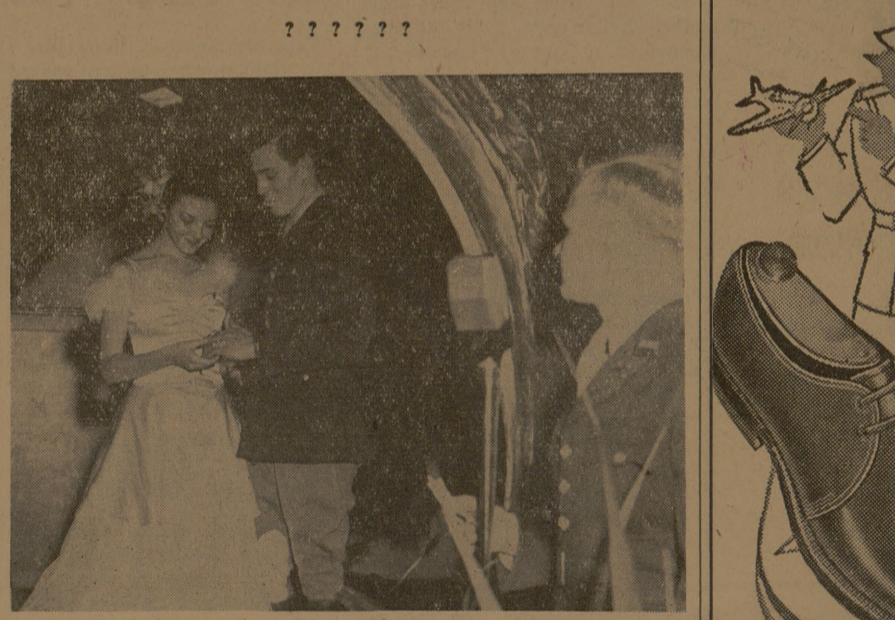
It was the opinion of the group that the most economical means of acquainting farmers with equipment they could build on or near their farms would be a series of seasonal demonstrations at the 18 substations of the Experiment Station. Equipment suitable to soil types which the Experiment Station had developed would be given action demonstration, and where possible these demonstrations would be taken to the farms subsequently. Farmers would be invited to bring in for demonstration labor-saving equipment they had originated and built.

M. R. Bentley, Extension Service agricultural engineer, and H. P. Smith of the Experiment Station engineering division were requested to select proved types of inexpensive labor-saving agricultural equipment for demonstration. Labor-saving devices which could readily be made on the farm were plentiful, said C. H. McDowell, acting director of the Texas Agricultural Experiment Station, but farmers were not familiar with many of them. Some 500 shops operated over the state under the direction of the Vocational Agricultural Department together with the services of teachers in each would be available to assist farmers in building equipment.

PULSATING PULCHRITUDE



Bill Glazier steps through the Senior Ring which was the scene of the couple's engagement announcement.



Charles West watches Butch watch Jackie.



Gerrie turns Joe Green's Senior Ring. From George West Sib brought Betty for a minute in the Ring.

Houston Ex's Unit Wears Citation

AT A 12TH AAF B-25 BASE ON CORSICA—First Lieutenant John F. Rougagnac, Jr., 24, of Houston, Texas, is now authorized to wear the Distinguished Unit Badge, signifying that he is a member of a Twelfth Air Force B-25 Mitchell bombardment group which has received the War Department citation "for its part in destroying the Benevento, Italy, marshalling yards with devastating effect."

The citation reads in part, "Distinguishing themselves through extraordinary heroism and unswerving resolution, the combat crews destroyed eighteen of the attacking planes and bombed the marshalling yards with devastating effect. The gallantry and combat proficiency exhibited by the personnel of this group in striking this decisive blow have reflected the highest credit on their organization and the Military Service of the United States."



Edgerton SHOES FOR MEN

Rapid strides are being made in aviation—and in shoemaking too! Take Dura-Soles for instance. They're new, they're soft, they're pleasant to wear, they're made of leather by a considerable margin.

\$6.50 to \$7.95

Waldrop & Co. "Two Convenient Stores" College Station—Bryan

LOUPOT'S A LITTLE PLACE - - - - A BIG SAVING!

HELP BRING VICTORY—BUY MORE WAR BONDS