

### OFFICIAL NOTICES

#### Classified

FLIERS—Have won a 10 hr. \$75.00 course at Bryan airport. Will sell for \$50.00. R. L. Echnoz, Bldg. 6, Room 212, Naval Training School, College Station.

LOST—Lifetime Sheaffer Fountain Pen with name, "J. Fuller Collier, Jr.," inscribed on it. Please return to 301 Bissell for Reward.

FOR RENT—One three room garage apartment furnished and bills paid. Call S. V. Ferritte, Phone 4-8794.

LOST—A thin yellow gold Elgin pocket watch. Reward. Call Mrs. Rogers, 4-7294.

#### Announcements

DALLAS CLUB—There will be a meeting of the Dallas A. & M. club tonight in the Y Chapel at 7:15 o'clock. Plans for the mid-term dance will be made and it is important that every one be present. Refreshments will be served.

SPANISH CLUB—The Spanish club will meet in room 124, Academic building, Wednesday at 7 o'clock.

RIO GRANDE VALLEY CLUB—The Rio Grande Valley A. & M. club will meet in room 120, Academic building, at 7:00 o'clock tonight. Plans for a watermelon picnic will be made.

HEART O' TEXAS AND MOUNTAINERS CLUB—The first meeting of the Heart o' Texas and Mountainers club will be held tonight in Room 109 Academic building. New officers for the club will be elected. All boys from Menard, Mason, Junction, and surrounding counties are urged to be present.

CHRISTIAN SCIENCE MEETING—There will be a meeting of the A. & M. Christian Science organization in the YMCA parlor at 7 o'clock Wednesday evening.

#### Meetings

RURAL SOCIOLOGY CLUB—Members of the Rural Sociology club are invited to attend a watermelon picnic Tuesday evening at 7:30. The picnic will be held in the area in front of the American Legion project house. A short business meeting will be held.

### Former Student Is Commanding Officer At Enid Sub-Depot

Col. LeRoy Hudson is a full Colonel now. The Commanding Officer of the sub-depot at Enid (Okla.) Army Flying School retains his same duties as both a flying officer and administrative officer after his promotion from the rank of Lieutenant Colonel.

Colonel Hudson has behind him a long record of service in the Army Air Forces. Graduating from Kelly Field, San Antonio, Texas, in 1938, he next attended the Chanute Field, Ill., Air Corps Technical School in 1931. Since then he has seen service as an engineering officer and organization commander at a half a dozen Army flying fields in the southwest.

### Get Our Prices on Made-to-Measure UNIFORMS



Stop in and see us before you order Made-to-Measure Uniforms. Our prices are right and every garment is made to your individual measure.

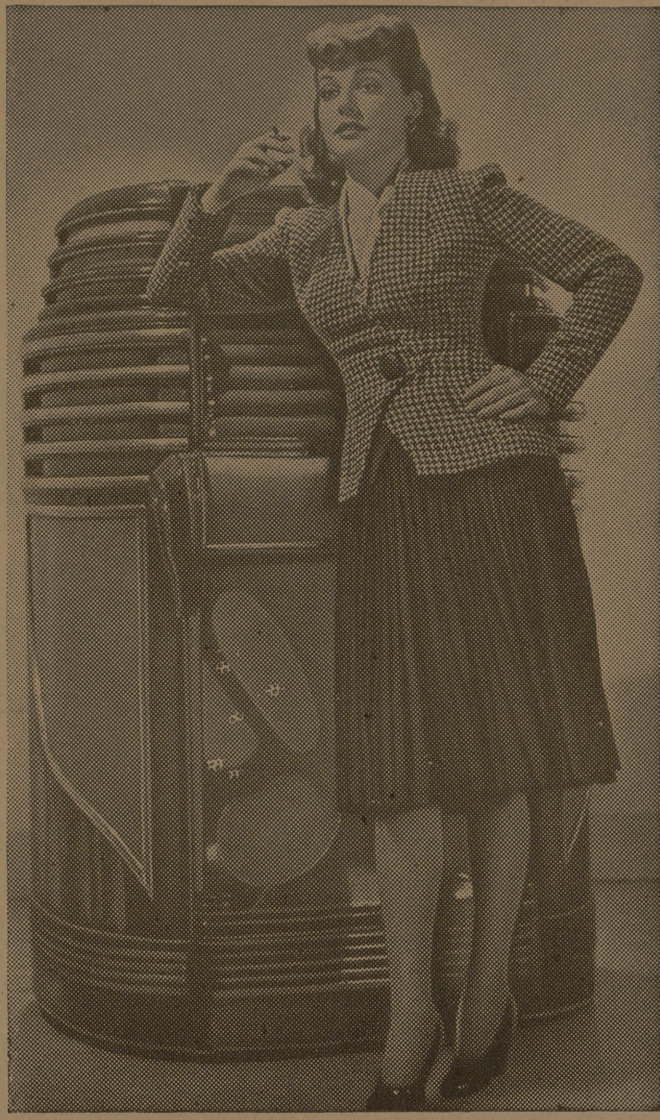
- Regulation Blouses
- Junior Slacks
- Ice Cream Slacks
- Ice Cream Breeches
- Wool Shirts
- U. S. Army Cramerton-Cloth Shirts . . . Slacks and Breeches

You'll like the smart tailoring and fine fabrics . . . every garment guaranteed to fit.

## Waldrop & Co

"Two Convenient Stores" College Station Bryan

## The Juke Girl



Ann Sheridan, shown above, is starred in the current attraction at Guion Hall as the "Juke Girl," the story of a girl who spends her time in dance halls.

#### LISTEN TO

## W T A W

1150 KC

Tuesday, August 4, 1942

- 11:25—Popular Music
- 11:30—Treasury Star Parade
- 11:45—Brazos Valley Farm and Home Program
- 11:50—Popular Music
- 11:55—The Town Crier

Wednesday, August 5, 1942

- 11:25—Popular Music
- 11:30—Arms for Victory
- 11:45—Brazos Valley Farm and Home Program
- 11:50—Popular Music
- 11:55—The Town Crier

#### —YMCA—

(Continued From Page 1)

by the start of the fall football and social season, Gay stated.

Funds for the enormous re-decorating program the YMCA has been doing were raised jointly by A. & M. Mothers clubs, and the Ex-Students association, while much of the actual remodeling on the YMCA building was undertaken by the college itself.

### A & M Forestry Service Releases First Sound Movie

Wood goes to war! "Forests of Freedom," the first all-color 16mm sound motion picture to be produced by Texas A. & M. College forest service was released this week for particular use in East Texas but adaptable and of interest to other sections of the state where Texas timber is playing a part in the war effort.

The film deals primarily with the many uses to which wood is being put. Scenes are included of timber operations. Actual forest fires pictured sweeping through timber stands are a highlight to the brief part showing ways to prevent destructive fires from starting. The whole film is given a military and patriotic atmosphere with views of A. & M. students on training and drill maneuvers.

The picture is primarily intended for use in the two motorized motion picture units operated by the Texas Forest Service in the piney-woods belt and its aim is the prevention of forest fires which are a hindrance to the production of wood material needed in the war. One copy will be kept at A. & M. for use in special showings.

onestory, frame dwelling with shingle roof and tenant occupancy before June 15, 1936 was \$37.50. Now the same amount of insurance on the same type dwelling will cost \$13.88. This will vary slightly in Texas towns according to their respective key rates and fire record credits.

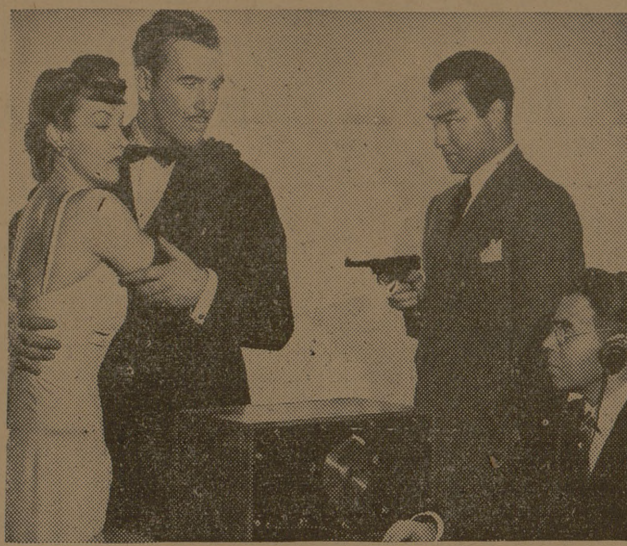
In recounting the substantial insurance savings effected during recent years, the Board recognizes that many factors have contributed to the continued downward revision in fire insurance rates. These include fire prevention practices; the cooperation of city officials with both the insurance department and local fire departments in providing more adequate protection against fires; action cooperation of the firemen; helpfulness of insurance agents in extending aid to insurance buyers, and the cooperation of the insurance companies.

The good fire record credits benefitting 506 Texas towns and cities this year will mean a total saving over normal insurance costs in the amount estimated at over \$2,773,000. In 1939 the Board of Insurance Commissioners made the maximum 25 per cent good fire record credit applicable to all towns and cities with an annual volume of \$20,000 or more in insurance premiums.

"Our efforts on a constant fire prevention program are now paying substantial dividends," Hall asserted. "Texas ranks foremost in the nation on fire prevention education. Texas firemen have done an excellent job as a whole in fighting fires and in the improvement of fire fighting practices. Given an opportunity they have been able to materially reduce potential losses after fires were discovered.

"Besides the property saved from fire destruction every year, the cost of production has steadily decreased. There is only one way in which we can preserve the savings record already attained, and that is to continue with a vigilant practice of fire prevention in every home and place of business."

## "Secret Agent of Japan"



A scene from "Secret Agent of Japan" starring Lynn Bari and Preston Foster, that Plays Tuesday and Wednesday as half of the double bill at the Campus.

## Paint Shortage Will Be Noticed

Before long, paints of many types are going to become scarce.

Mrs. Bernice Claytor, specialist in home improvement for the A. and M. College Extension Service, says shortages will be felt especially in paints, varnishes, and enamels for interiors. The reason is, these require natural or synthetic resins. For some time synthetic resins have been ear-marked for exclusive war use, and lately the War Production Board has ordered a 50 per cent cut in the amount of natural resins manufactured for civilian purposes.

Here are some of the specialist's suggestions for choosing and using interior paints to the best advantage.

Semi-gloss paint, which washes well and is not to harsh in appearance, is suitable for kitchens and bathrooms. Flat paint gives a "soft" appearance and is best for large areas such as walls and ceilings. It soils less quickly than gloss paint, but it will not stand up as well under washing.

Calcimine is the cheapest wall paint available. Though it cannot be cleaned, it can be washed off entirely and a new coat applied. The specialist cautions: "Don't use calcimine on smooth woodwork or on walls which have been covered with oil paint." The coating eventually will chip off and make later re-painting far harder.

Enamel should be used only on very smooth surfaces, for it makes holes, chips, and scars more noticeable. Homemakers who want to avoid the trouble of sandpapering and planing uneven surfaces, should use a gloss or semi-gloss paint instead of enamel.

## Wood For Aircraft Construction Now Under Observation

Studies of the possibilities of using native Texas woods for plywood in aircraft construction have been initiated by A. & M. through two of its divisions, the Texas Forest Service and the Engineering Experiment Station.

Work was started this week making three-ply sweetgum plywood panels of varying thickness on the powerful hydraulic press in the forest products research laboratory of the Texas Forest Service, under the direction of E. W. Stark. Three Texas veneer companies are cooperating on the study by furnishing the veneers, and strength tests of the completed panels will be made at the college by Prof. H. J. Hansen, timber specialist, of the Civil engineering department.

The plywood is built up in alternating layers, bonded together with a phenol formaldehyde resin, which is not affected by weather or moisture. In this way thin strips of wood can be built up into a sheet having strength qualities greater than an equal weight of aluminum, and with a number of other desirable qualities.

At present many of the formulae used in the design of plywood parts are based on a number of assumptions. Besides developing the various strength properties of sweetgum it is planned to use the results of the strength tests conducted at A. & M. as a means of deriving more accurate general formulae which can be applied to airplane design as well as other structures.

Wood is being used in increasing amounts on American aircraft and recently the Army and Navy were reported to have contracted for wood training planes. Plans have also been prepared to construct huge transport planes of bonded plywoods. Some of Italy's combat airplanes are known to have wooden wings and fuselage.

Sweetgum has been approved recently by Army officials for use as plywood in aircraft. It occurs in East Texas on rich bottomlands. Its reddish-brown heartwood is valued for furniture and paneling. It is also extensively used for baskets, crates and veneers. The forest service estimates that the volume of sweetgum in standing trees in East Texas will total about two billion board feet.

## Wartime Meal Course Offered TSCWites

Practical wartime problems in nutrition are being considered by Dr. Ercei Eppright, head of the TSCW home economic department, and her group of workshop students who are studying "Food for the Family" the next three weeks.

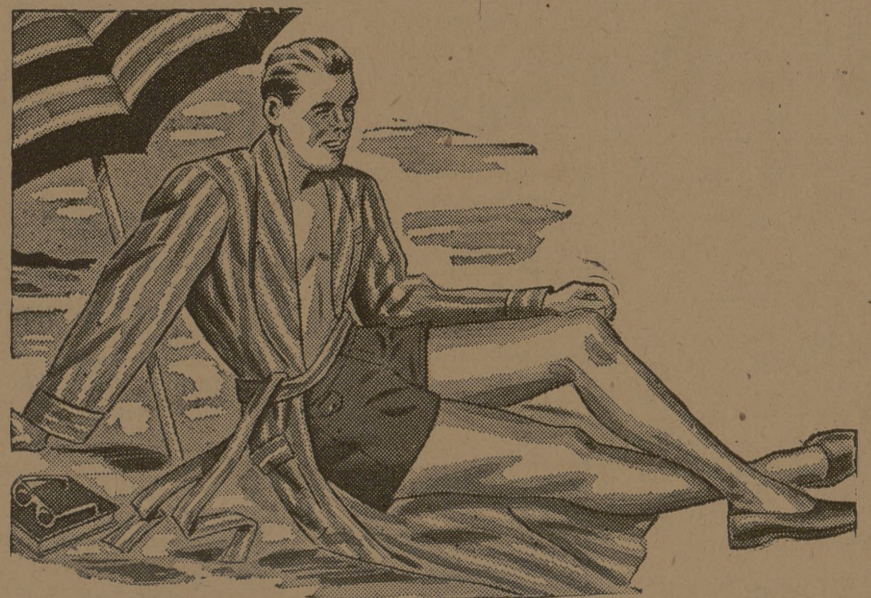
LIKE MAGIC  
- Books Turn to Cash -  
See Us Before You Sell  
**COLLEGE BOOK STORE**  
Next to A. M. Waldrop's

RIDE the BUS to BRYAN  
- Safe -  
Dependable - Economical

2 Rides for 15¢ A Saving of 5¢  
Save When You Ride

**BRYAN-COLLEGE TRACTION CO.**

## America's FINEST SWIM SUIT



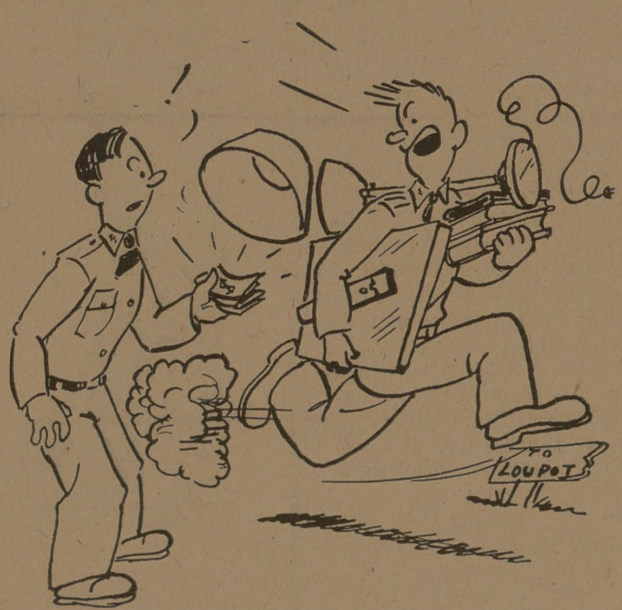
# JANTZEN

## EXCHANGE STORE

AN AGGIE INSTITUTION

## Sample Cartoon to Win \$50.00

For Rules see Tues., July 28, Battalion



No chatter from you, I'm headin' for LOU!  
You too should see Lou  
To get what's coming to you!

## Loupot's Trading Post

An Aggie Tradition