

Official Notices

Executive Offices

CLASSES SUSPENDED—Classes will be suspended at 10 a.m. today to permit all students to attend the exercises honoring the Aggie heroes—F. C. Bolton, Dean.

Classified

BEDROOM with meals as desired. College Park, three blocks from Campus. Call 4-4719.

FOR RENT—Furnished apartment, 111 Montclair St., College Park, 1/2 block from Campus.

Are you behind on war news? Special rates for all military personnel, professors and students: TIME \$3.50, LIFE (students and military personnel) \$3.50. Regular rates for others: TIME \$5.00, LIFE \$4.50, FORTUNE \$10.00. Subscribe now through Doll Hammons, Authorized Agent, Box 4255 or see in Room 320 No. 9 or 4th floor Academic building.

FOR RENT—One three-room furnished apartment, S. V. Peritte, 4-8794.

FOR RENT—Extra cool, furnished 4-room apartment. Separate meters, entrance and yard. On bus line. See Mrs. Jess Hensarling at 900 East 30th St., Bryan, or call 2-1552 after 5:00 p.m.

FOR RENT—Furnished apartment, utilities paid; 1/2 block up from Highway No. 6 on Sulphur Springs Road; also room for 2 gentlemen. Phone 4-8634.

NEWCOMERS CLUB—Newcomer's club will meet Wednesday afternoon with Mrs. C. H. Groneman at three o'clock. All members are invited and there will be bridge and sewing.

Announcements

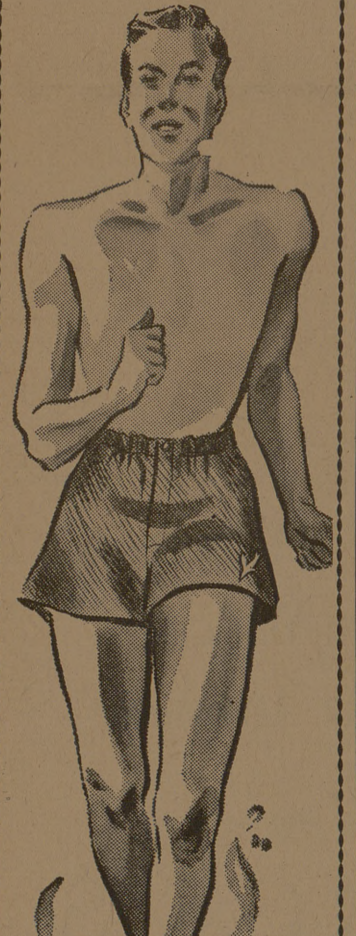
Buses for the First Christian Church in Bryan leave the new area at 9:15. These buses stop at the new area, Old Y, and at the north gate. Students will be at each of these places to give out tickets.

STATEMENT OF POLICY BY THE RED CROSS EXECUTIVE BOARD We recognize the American Red Cross as a world society organized for the purpose of ministering to mankind in all sorts of emergencies and calamities. Its ministry is especially increased in time of war, both to civilian population and to soldiers in the armed forces.

The program of the Red Cross is carried on by volunteer workers, and this program is open to any American citizen regardless of class or race. It is financed by volunteer subscriptions from our citizens.

The policy of the Red Cross is formed by a National Executive Committee in Washington of which the Hon. Norman H. Davis is Chairman. A Local Chapter is granted a charter with the provision that it conforms to the National Policy. The Local Board of the Chapter has no alternative than to carry out the prescribed policy. If any unusual question arises in the Chapter it must be decided by the area office in St. Louis.

The effectiveness of the chapter depends upon the cooperation and the spirit



STYLED IN CALIFORNIA the "SHIR-ZIP" Catalina SWIM TRUNKS - Featuring Built-in Comfort LOOK FOR THE FLYING FISH

Slip into a pair of Catalina Swim Trunks and enjoy the freedom of Catalina styling. The "SHIR-ZIP" shown above is available in Maroon... Tan or Royal Gabardine. \$2.50

Catalina Latex Trunks in smart patterns or plain colors \$1.95 to \$5.

Catalina and Manhattan TENNIS SHORTS \$2.25 to \$2.50

Waldrop & Co Two Convenient Stores College and Bryan

Rev and Mrs R L Brown



Pictured above are Rev. and Mrs. R. L. Brown. He has been pastor of the local Baptist church for the past 22 years.

of loyalty within its membership. In view of the fact that hundreds of Brazos County boys are now in the service and the further fact that at least seventeen of these boys have been reported "missing in action," the local Board urges the sort of cooperation that would establish beyond a doubt the loyalty of its citizens to our country, and a deep appreciation for the supreme sacrifice which has already been made by our boys. This Chapter is peculiarly favored because it is represented by the thousands of A. & M. boys who are in all branches of the service throughout the world.—Executive Committee, Brazos County Chapter American Red Cross.

CITY TO BEGIN WORK OF MOWING VACANT LOTS WITHIN ITS LIMITS At the regular meeting of the City Council July 9th, provisions were made to begin the work of mowing all vacant lots within the limits of the city of College Station. All lots not mowed by that time will be mowed by the city and a bill for this service will be rendered to the owner of the property thus involved. This action of the Council follows the provisions of a recently enacted ordinance which provides that vacant lots shall be mowed when in need of same and assesses the penalty of a fine not to exceed \$50.00 for each offense.

An agreement has been entered into by the City Council of the city of College Station and Mr. J. M. Miller to begin this work Monday, July 30th and to proceed until all vacant lots within the city limits have been put in satisfactory condition. The rate will be \$1.00 per hour.

Church Notices

THE CHURCH OF CHRIST R. B. Sweet, Minister Sunday: 9:45 a. m., the Bible classes; 10:45 a. m., the worship service; 7 p. m., the after-upper discussion group and at 8:00 p. m. the evening worship. Wednesday: 7:30 p. m., the mid-week prayer meeting. All are invited to attend all these services. You will be most welcome.

BETHEL EV. LUTHERAN CHURCH 509 S. College Avenue, Bryan Rev. H. A. Traugott, Pastor 9:45 a. m., Sunday school and Bible class. 10:45 a. m., Morning service. All are cordially invited to attend. Services will be over in time for students to return to the campus for lunch.

ST. THOMAS CHAPEL (Episcopal) Rev. Roscoe Hauser, Jr., Chaplain 7:00 a. m., Holy Communion. 9:00 a. m., Church school. The Coffee club. 10:00 a. m., Morning prayer and sermon. 7:00 p. m., Canterbury club.

CATHOLIC BOYS—Don't forget the Newman club dance Saturday night at 8:30 in the Maggie Parker Tearoom in Bryan. Every Catholic boy invited.

FIRST BAPTIST CHURCH, COLLEGE STATION, Rev. R. L. Brown, Pastor Harvey Hatcher, Education & Music Sunday school 9:45 a. m. Morning worship service, 10:50 a. m. B. S. U. Council 1:30 p. m. Training Union, 7:00 p. m. Evening worship service, 8:00 p. m. All students are welcome to our services in the new Baptist church just one block north of the North Gate, Post Office.

A. & M. PRESBYTERIAN CHURCH Norman Anderson, Pastor 9:45 Sunday school. 11:00 Morning worship, Sermon topic: "Uncovering Surprises." 7:00 Young People's League. Topic: "If I Could Do It Again." 8:00 Evening worship and fellowship. All services are held in Guion Hall. During the summer our evening program is held on the lawn in front of Guion Hall. A cordial welcome to all.

THE FIRST BAPTIST CHURCH in Bryan Wm. H. Andrew, D. D. Pastor Sunday School—9:45 A.M. Morning Worship—10:00 A.M. Evening Worship—6:30 P.M. Baptist Training Union—7:30 P.M. A cordial welcome to every Aggie. Meet your friends at this church. Attend the Dan Russell Sunday School Class, every Sunday. Free bus from Project House area at 9:15; New area 9:20, old Y 9:25. A family church for students.

TWILIGHT

(Continued from Page 3) tilts on schedule: Madeley's Pharmacy vs. Lipscomb's Pharmacy—Diamond 9. Campus Cleaners vs. Holick's Cleaners—Diamond 7. Faculty vs. Aggie Cleaners—Diamond 6. Campus Theatre vs. Loupot's—Diamond 4. Juke Box Prom Saturday...35 cents Colorado university's basketball team has scheduled a game in New York's Madison Square Garden for five straight seasons. Juke Box Prom Saturday...35 cents

House Flies Are Definite Menace To Public Health

Thousands of children and adults die every year from diseases carried by the fly. Typhoid fever, tuberculosis, summer complaint, cholera, intestinal diseases, and frequently death follow closely in the trail of the common house fly.

"The control of the fly menace comes at the top of the list of necessary public health measures which should be applied by every city and community in the State," urged Doctor Geo. W. Cox, State Health Officer.

"The most effective measure for control is to prevent breeding," Doctor Cox said. "Flies breed in filth, and about eight days are required to complete a life cycle. During her life time of several months, one house fly lays from 600 to 1000 eggs. Thus it can easily be seen that in a season which usually begins in the spring of the year, the descendants from one fly number countless thousands.

"To eliminate flies, the breeding places must be destroyed. Manure piles, garbage, and other organic filth furnish the requirements of warmth, moisture, and food necessary for the propagation of the fly. Flies should be kept from contact with food or drink or utensils in which such food and drink are prepared and served. Likewise, they should be kept from access to privy vaults where they pick up the infections, which they later spread to humans by contact with the food and drink, and by unwashed hands and utensils.

"See that your windows, doors, and porches are screened so that the stray fly from some careless neighbor will not molest your family. See that your grocer keeps meat, vegetables, and fruit screened from flies. "Organize health measures to destroy the breeding places, control the flies' access to your home and food, and establish standards of cleanliness in your community that will eliminate the fly."

Nearly 50 per cent of families with children in college have incomes of less than \$3,000 a year.

"It's A Gam, Gary!" Sure, a gam—a leg to you, Professor! A sprightly episode in the romance between a professor writing an encyclopedia of slang, and a cabaret sweetheart of the gangsters who runs to him for protection. Gary Cooper and Barbara Stanwyck are starred, in Samuel Goldwyn's "Ball of Fire" showing at the Campus Thursday and Friday.

Forest Fires Can Slow War Effort

Forest protection is national protection. Now, as never before in America's history, our forest resources must be guarded against fire. The demand for lumber to be used in connection with war industries and activities is taxing the South's woodlands so heavily that, even with the utmost care, they will be greatly depleted by the end of the present crisis.

Each acre of merchantable timber destroyed by fire is a loss that the South cannot afford to bear, and each acre of young growth burned leaves a smaller growing stock to meet post-war demands. Every man-hour spent in fighting fires means an hour that could have been devoted to building planes or ships or to producing needed farm products. In addition, smoke from forest fires interferes with artillery and aviation training and the detection of enemy planes and submarines.

In the South, Regional Forester Joseph C. Kircher, of the U. S. Forest Service, says some 95 per cent of all forest fires are man-caused. Any fire that man causes, man can prevent. Most of the South's fires are caused by carelessness or incendiarism. The smoker, camper, hunter or fisherman, by taking simple precautions, can easily avoid setting the woods on fire. He can be sure his match is out before throwing it down, and that his pipe heel or cigar or cigarette butt is dead. He can take care to build his campfire well away from inflammable material and to see that it is out—dead out—before leaving it.

Farmers should make it a rule never to burn brush when the wind is high and always to be sure that plenty of help and fire fighting tools are on hand. The forest fire-bug must pause to remember that his action would give aid and comfort to the enemy, that every acre he burns helps Hitler and Hirohito. Unburned forests, by conserving rainfall, help provide abundant and steady supplies of water for industrial and power purposes. They aid in preventing destructive floods and erosion of valuable farmland. They provide food and shelter for wildlife and opportunities for healthful recreation.

The forests of the South are vital to the present war efforts and to future prosperity. They can

DISTRACTIONS

(Continued From Page 2)

a creditable performance as the cop who helps solve the murders. The Lowdown: the whole thing's loco.

As the attraction at the Campus theatre at midnight tonight and also Sunday and Monday, Claire Trevor, William Holden and Glenn Ford hold forth in "TEXAS," a story of our state shortly after the Civil War.

In "Texas," Glenn Ford and William Holden are two boys who go West after the war between the states. Ford is a law-abiding citizen and Holden gets in with some cattle-rustlers. The friendship between the pair is split up even further when they both fall in love with Claire Trevor.

"Texas" is full of cattle stampedes, shoot-em-up gun battles and good old fist fights. Its got drama, comedy, romance and action.

The Lowdown: a class "A" Western.

Street Returns from SPEE Meeting in N Y

W. E. Street, head of the engineering drawing department, has just returned from the annual meeting of the Society for the Promotion of Engineering Education held at the colleges and universities of New York City.

The general theme of the meeting was "The Task of the Engineering Colleges in the War Effort."

High points of the Drawing Division meeting included: Practical Application of Descriptive Geometry in the Shipyard Drafting Room, by A. M. Merrill, principal Naval Architect at the Brooklyn Navy Yard; and Revision of Drafting Standards.

Street was elected editor of the T-Square page in the Journal of Engineering Education for the second successive year. This page is devoted to the interests of the Division of Engineering Drawing.

Juke Box Prom Saturday...35 cents

Dinah Shore Featured On WTAW Saturday

Dinah Shore, the nation's favorite feminine singer of popular songs, shares the spotlight with two dramatic stars, Edward G. Robinson and Mabel Todd, on the "Treasury Star Parade" broadcast to be heard Saturday at 11:30 over Station WTAW. Miss Shore, who is heard regularly each Wednesday night on the Eddie Cantor "Time to Smile" series, and on Friday on her own musical series, sings an English song now achieving popularity in this country, "He Wears a Pair of Silver Wings." Robinson and Miss Todd, both well known screen actors, co-star in "Joe Doakes and the White Star." David Broekman is music director of the "Treasury Star Parade" series.

University of Minnesota Flying Club has trained more than 400 students as fliers without accident of any kind.

Juke Box Prom Saturday...35 cents

and must be protected against their arch enemy, the red fire wolf.

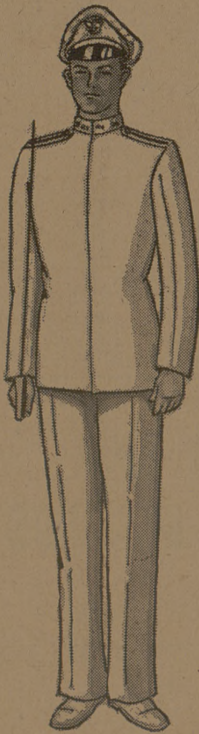
Have Your Eyes Examined Lenses Duplicated Dr. John S. Caldwell Bryan, Texas

Five Secondhand

R. V.

UNIFORMS

FIRST COME FIRST SERVED



LOUPOT'S Trading Post

LISTEN TO WTAW

1150 KC

Saturday, July 11

11:25 a.m.—Music 11:30 a.m.—Treasury Star Parade (U. S. Treasury) 11:45 a.m.—Brazos Valley Farm and Home Program 11:50 a.m.—A Moment for Reflection (Bryan and College Station Pastors) 11:55 a.m.—The Town Crier 12:00 noon—Sign-Off

Sunday, July 12

8:30 a.m.—Classical Music 9:15 a.m.—Roans Chapel Singers 9:30 a.m.—Sign-Off

CHURCH

(Continued from Page 1)

were moved to the Engineering Building auditorium. They were held there until a church was built.

Both Rev. and Mrs. Brown are active in state Baptist student work. They have been Baptist Student Secretaries since the time they came to A. & M. in 1920. They have attended every Baptist Student Meeting in Texas and the South for the past 22 years and have attended two international student conferences in Europe.

This is the only church that is known to have grown out of Baptist Student work, church officials stated. It was pointed out that now at A. & M. over 1,250 students show preference to the Baptist Church. During the month of June, 150, mostly students, have joined the church here.

Juke Box Prom Saturday...35 cents

Typical yearly expense at state-operated co-educational colleges in the U. S. is \$453, while the figure for private institutions is \$979.

Commissions Open To Doctors In Emergency Service

Supplying the need for an immediate program of expansion in the medical personnel available for the Health and Emergency Medical Service, Dr. Geo. W. Cox, State Health Officer, today announced that the United States Public Health Service is offering reserve commissions to physicians and dentists whose services may be used to care for evacuees in the event of enemy action.

Recruitment for those reserve commissions will be largely from older age groups, from those of minor physical disability, making them ineligible for military service, and from women physicians.

Doctor Cox, who serves as State Chairman on Health and Emergency Medical Service, pointed out that it is essential that staffs for operating base hospitals in safe areas be adequately planned to go into immediate effect, in event of disaster. "Caring for the sick and injured in the event of enemy action is a grave responsibility, and we one has the right to assume that we are immune from attack," Dr. Cox said. "Emergency base hospitals in safe areas to which casualties may be evacuated, together with lines of evacuation, and means of transport have been established in almost all sections of this state."

Juke Box Prom Saturday...35 cents

TRADE WITH LOU, HE'S RIGHT WITH YOU LOUPOT'S

SUBURBAN BUS SERVICE TO SAVE TIRES STARTS

In view of the shortage of tires, causing many residents of the College Station area who shop in Bryan to limit the use of their automobiles, this company proposes to launch a new schedule of trips, on a 30 day trial basis. There will be two trips in the morning and two in the afternoon, that will serve College Hills, Oakwood, College Park, South Side and operate on the loop formed by Highway 6 and College Road.

This schedule will be subject to change, if this is necessary to give the best service possible.

If this service, which has been sought by many residents of the areas to be served, is supported, it will be continued indefinitely.

However, if the buses are compelled to operate at a loss, it will not be possible, because of the tire situation, to continue the schedules. To determine this, exact records of each trip will be kept for a thirty-day trial period.

The following schedules will go into effect July 6th:

Lv. Bryan	8:30 A.M.	Lv. Bryan	1:00 P.M.
Ar. Col. Hills	8:42	Ar. Col. Hills	1:12
Ar. Oakwood	8:55	Ar. Oakwood	1:25
Ar. College Pk.	9:00	Ar. Col. Pk.	1:30
Ar. S. Side	9:05	Ar. S. Side	1:35
Ar. Bryan	9:20	Ar. Bryan	1:45
Lv. Bryan	11:00 A.M.		
Ar. Col. Hills	11:12	Lv. Bryan	3:45
Ar. Oakwood	11:25	Ar. Col. Hills	3:57
Ar. Col. Pk.	11:30	Ar. Oakwood	4:10
Ar. S. Side	11:35	Ar. Col. Pk.	4:15
Ar. Bryan	11:50	Ar. S. Side	4:20 *

*This bus will not be available for return to Bryan until 5:00 P. M.

All buses will leave Bryan for College over new highway 6, returning by campus, YMCA and North Gate.

Fares: 15¢ from all park communities listed above to Bryan, 5¢ from all park communities listed above to campus, 10¢ or 2 tokens for 15¢ from Campus to Bryan.

Bryan-College Traction Co., Inc.