

By Mike Haikin
Battalion Sports Editor

Aggies to Nip Frogs 14-7; Also Picking Texas, Rice, and SMU to Win Tilts Today

This afternoon one of the most extensive SW conference schedules gets under way. Two conference games and a couple of intersectional tilts are on the menu today. The conference will have a grand chance to add prestige to its already respectable record when Rice and S. M. U. take on L. S. U. and Auburn respectively. As for the conference games, the Texas Aggies match wits with the T. C. U. Horned Frogs in what should turn out to be a whale of a battle, and Texas faces Arkansas in Austin.

We're still batting 1,000 in conference games, but may break that ole limb today. Anyway, we'll try not to, so here goes.

A. & M. - T. C. U. . . . The highest scoring team in the nation versus one of the best defensive teams in the country. Whatta battle that should turn out to be. However, they tell us that a good offense is the best defense, and it seems that the Aggies have enough of both to take home the bacon. The coin says Aggies by a 14-7 count.

TEXAS-ARKANSAS . . . Even if Layden doesn't get to play we can't see anything but a slaughter in this one. Texas should breeze, 39-7.

RICE-L. S. U. . . . Here's a good one for someone to make suckers out of the "Smart" boys. Rice had its peak against Tulane last week, and is due for some sort of a letdown. We would pick an upset here if Rice were playing anyone but L. S. U. The Tigers just don't seem to have any scoring punch, and teams without scoring punch can't win ball games. Even if Brumley might be on the sidelines, it's the Owls by a 13-0 count.

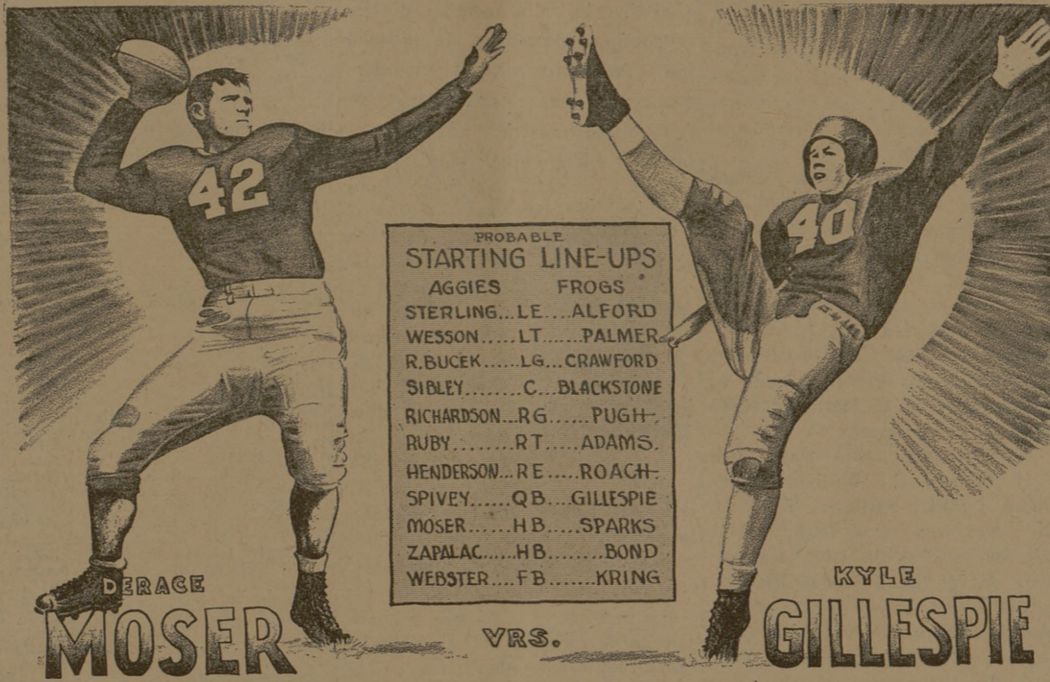
S. M. U. - AUBURN . . . The Mustangs are still one of the strongest teams in the Southwest Conference, and this is just not the stopping place for them. Spot any number of points you want on Auburn, and we'll still take S. M. U. Score 26-0.

Other good games to take include Northwestern over Michigan by a whisker (and we do mean a whisker), Duke over Colgate by 19, Navy over Cornell by 7, Fordham over West Virginia by 30, Nebraska over Indiana, Washington State over Southern California in a mild upset, Washington over U. C. L. A., Georgia over Columbia, Dartmouth over Harvard by 13, and Alabama over Tennessee by 6 or less.

SPORTS SQUIBS FROM HERE AND THERE

Harry Ferguson, U. P. sports editor, who saw last week's game between A. & M. and N. Y. U. writes: "First prospective All-American seen by this department in 1941 is Derace Moser, Texas Aggie tailback . . . Moser runs, passes, and kicks . . . his only flaw is that he has not learned to carry the water bucket without spilling a few drops" . . .

Triple-Threaters Tangle Today



PROBABLE STARTING LINE-UPS

AGGIES	FROGS
STERLING...LE...ALFORD	WESSON...LT...PALMER
R. BUCEK...LG...CRAWFORD	SIBLEY...C...BLACKSTONE
RICHARDSON...RG...PUGH	RUBY...RT...ADAMS
HENDERSON...RE...ROACH	SPIVEN...QB...GILLESPIE
MOSER...HB...SPARKS	ZAPALAC...HB...BOND
WEBSTER...FB...KRING	

'MOSE' AND KYLE WILL MIX IT UP TODAY IN FORT WORTH AS THE AGGIES AND FROGS COME TOGETHER IN THEIR ANNUAL TUSSELE. BOTH BOYS ARE PLAYING THEIR LAST YEAR OF FOOTBALL, AND AS MAINSTAYS ON THEIR RESPECTIVE TEAMS WILL SPARK THEIR TEAMMATES TO ACTION ON THE GRIDIRON!!!

PETER CANTU

Dutch Meyer, Frog Coach, Has Compiled Great Record at TCU

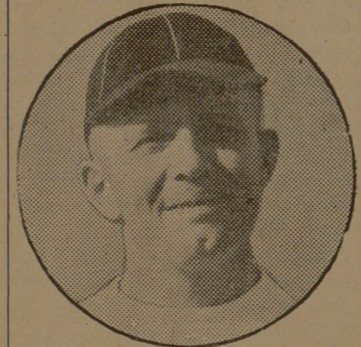
Leo R. "Dutch" Meyer, head football coach at Texas Christian university, has been with that school as student and coach for 22 years. Meyer entered T. C. U. as a freshman in 1917, when first-year men were eligible for intercollegiate competition.

"Dutch" became one of the most versatile athletes that school ever had; lettering four times in basketball at guard; four times in baseball as a pitcher; and twice in football at end. He was captain of the basketball team twice and the baseball club once. Meyer's total collegiate record is ten varsity letters and three times captain.

Meyer left school in 1918 to go into the service of the United States Army; was commissioned a

second lieutenant and was an instructor in the S. A. T. C. at Transylvania college at Lexington, Kentucky.

Upon graduation from T. C. U.



HEAD COACH L. R. "DUTCH" MEYER
T. C. U.

In 1922, Meyer had such an impressive record in baseball that the Cleveland Indians signed him. An old shoulder injury kept him from playing ball so he returned to Texas to coach at Polytechnic high school, Fort Worth, in the spring and winter of 1923. In 1923, T. C. U. entered the Southwest Conference and Meyer came back to his Alma Mater as freshman coach. He has been there ever since.

Meyer is married, has no children. His hobbies are farming, fishing, and bridge; he operates a farm about 20 miles from Fort Worth. Meyer never gets far away from football, no matter what.

(See DUTCH MEYER, Page 4)

Williamson Picks Aggies, Steers to Win Their Games

By Paul B. Williamson
In the two Southwest Conference games we have the Texas Aggies meeting the Texas Christian Horned Frogs and the Texas Longhorns tangling with the Arkansas Razorbacks. The Aggies, rated in fourth place with a rating of 99.0 per cent, should defeat the Horned Frogs, who are in 39th place in the Williamson System with a rating of 89.7 per cent.

The System picks the Longhorns, in first place with 99.9 per cent, to beat the Razorbacks, in 82nd place with a 84.9 per cent rating in the System.

Two Southwest Conference teams should shine in intersectional games today. The Williamson System picks the Rice Institute Owls to win over the Louisiana State University Tigers and the Southern Methodist University Mustangs to beat Auburn.

Today's outstanding intersectional game will find the Colgate Red Raider's invading Durham, North Carolina, to clash with the Duke Blue Devils. Duke, having a rating of 99.5 per cent, should win in stride against Colgate, who has a rating of 88.7 per cent. Even though the score should be as the ratings indicate, Colgate could still close the season as one of the strongest teams in the East.

Our selections for other important contests are: Georgia over Columbia, in a rough one; Ole Miss over Holy Cross; Nebraska over Indiana; Santa Clara over Michigan State; Fordham over West Virginia; and Kentucky over Xavier, with possibly a rough fight here.

The biggest game of the week, a non-intersectional battle, will be the game between the Northwestern Wildcats and the Wolverines of Michigan. That's just what it will be, a battle, and a battle of giants. The result of the game may have a bearing on the national championship, and definitely on the Big Ten championship. We pick Northwestern.

The remainder of the System's pickings are: Centre over Cincinnati; Alabama to win over Tennessee; Yale to eke out a victory

over the Army; Richmond U. over Washington & Lee; Sewanee to take Southwestern of Memphis; Baldwin Wallace over Western Reserve; Coast Guard to take Norwich; C. C. N. Y. over Clarkson Louisiana Tech to beat Louisiana Normal; and Boston University to take Bucknell.

Other leading games include: Boston College over Manhattan; Colorado to beat Colorado State, (hard); V.P.I. to take Davidson; Denver U. over Wyoming; Dartmouth over Harvard; Missouri over Iowa State; Syracuse over N.Y.U. and Temple to beat Penn State.

SATURDAY, OCTOBER 18

Home Team	Visiting Team
Akron	OHIO
Auburn	S. M. U.
ABILENE CHRIS.	Southwestern (Tex)
ALABAMA	Tennessee
Bates	NORTHWESTERN U.
BOSTON COLLEGE	Manhattan
BROWN U.	Tufts
Bucknell	BOSTON U.
BUTLER	DePauw
Buffalo	WASH. & JEFF.
Brigham Young	UTAH U.
Carnegie Tech.	NOTRE DAME
Cincinnati U.	CENTRE
Citadel	FURMAN
C. C. N. Y.	Clarkson
COE	Cornell Col.
Colorado Mines	COLORADO COL.
COLORADO U.	Colorado St.
Columbia U.	GEORGIA U.
Connecticut U.	MAINE
CHENEY TCHRS	Wash. St. Froh.
Davidson	V. P. I.

(See WILLIAMSON, Page 4)

Campus

SATURDAY
LAST DAY
"A GIRL, A GUY &
A GOB"

Lucille Ball George Murphy

PREVUE SAT. NIGHT
11 P. M.
SUNDAY & MONDAY
Ronald Colman — Jane Wyatt

Plus
Cartoon — Short — News

BEAT T. C. U.
BUT YOU CAN'T
BEAT
Us For A Swell Place To
Eat And Drink
**MADELEY
PHARMACY**

Across from PH-1 Ph. 4-4144

GIG 'EM AGGIES

THE FIRST NATIONAL BANK
Bryan, Texas

COLLEGE CAMPUS SANDWICH SHOP
"Pop Shaw's Hamburgers Are Best!"

HASWELL'S
Bryan

C. W. VARNER, JEWELER
Bryan — College

DeLUXE CAFE
"Where They Serve The Best"

ZUBIK & SONS
Uniform Specialists

CAMPUS VARIETY STORE
North Gate

HRDLICKA'S CAFE
On Old Highway 6

CITY NATIONAL BANK
Bryan, Texas

CALDWELL'S JEWELRY STORE
Bryan

NORWOOD'S & THOM McAN

CANADY'S PHARMACY
Bryan

GUY H. DEATON
TYPEWRITER EXCHANGE
116 S. Main Bryan

AGGIELAND SERVICE STATION
East Gate

CAMPUS CLEANERS
Over Exchange Store New "Y"

Y. M. C. A. BARBER SHOP
& VARSITY BARBER SHOP

FIRST STATE BANK & TRUST CO.
Bryan

BRYAN MOTOR CO.
Ford Products

G. S. PARKER LUMBER CO.
Bryan

PALACE — QUEEN — DIXIE
THEATERS
Bryan