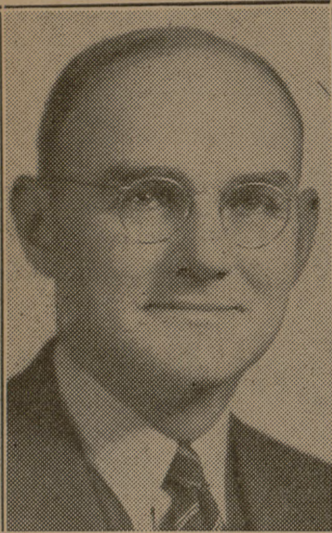


Engineering Dean



Dean Gibb Gilchrist, who sponsors the annual Engineer Show.

Engineers' Day Turns EE Building Into Maze of Wire and Machinery

Say, you parents and visitors, do you know the color of your voice... or its shape?

Well, you can see for yourself over at the Electrical Engineering exhibit in the EE building today from 10 to 12 this morning and from 2 until 5 this afternoon.

And there will be other electrical displays, featuring an automatic-electro counter of people that enter the building, a surge generator which will generate 300,000 volts and will split wood or make artificial light, a transmitter of voice by light rays, and a machine which makes pop corn minus the usually required heat.

All in all, there will be eighteen displays offered, and each display will be conducted and explained by a sophomore or freshman electrical student. Every exhibit has been produced with regular equipment that has been in use in everyday laboratory work.

The Engineer's Day sign on top of the EE building was constructed

and will be operated by three senior students of that department. The military science exhibit in front of the building will be conducted by the cadet Signal Corps regiment and the EE department. L. M. Haupt, associate professor of the department, is the faculty sponsor for the project, and Fred Nichols is the student in charge of all arrangements.

Picnic Lunch Tickets Now Available

"Students who will have guests for the picnic lunch at the Stadium, Sunday noon, must secure tickets for themselves and their guests," Preston Bolton, chairman of the parent's day activities, said Wednesday.

Serving will begin promptly at 12 and will continue until 12:45. Tickets are available in each organization and may be secured from the 1st Sergeant.

Mechanical Engineering Students Will Put on Largest Show in History

The Mechanical Engineering department promises to have one of the largest and most interesting exhibits in the Engineer's Day Program. Some of the exhibits that will be on display were on last year's program, but they will be even more interesting and educational this year.

The exhibits will be distributed through all sections of the department. One of the most interesting events will be the pouring of iron in the foundry. A model is built in the shape of Mt. Vesuvius. The molten metal is poured into the model and due to a reaction the molten metal is thrown into the air like lava that is coming from some erupting volcano. M. W. Watson, instructor in the foundry, will do the pouring of the metal and he will explain why the model erupts.

Some of the exhibits in the machine shop and the pattern shop

with various pieces in operation, will be displays of projects designed and constructed by the students, the operation of all the machines and a display of electrical and acetylene welding equipment including an automatic torch.

The mechanical and steam laboratory will have an interesting exhibit in the display of automobile engines. One engine will be mounted and running on the testing block. There will also be a display of automobile chassis with cutaway engine mountings. With the cutaway mountings, a person will be able to see all parts of an engine while it is in operation. The different parts of the engine and the function of each will be explained. Many other types of engines including hot-air engines, steam engines, gas engines, oil engines and generators will be on display.

Civil Engineering Department Students Promise Big Exhibit

The exhibit of the civil engineering department has been one of the outstanding features of Engineers' Day each year that the department has participated in the annual event. Today from nine a. m. until five p. m. the C. E. students again promise a stellar show at the Civil Engineering building.

Many of the individual exhibits that proved to be a success last year will again be presented at the show today. In addition to these, many new features will be added. Included in these new features will be what the civil engineering students call the fountain of youth. This fountain consists of a water pipe in mid-air suspended by wire from the ceiling and water flowing from the pipe. An explanation of the fountain will be made at the show.

H. E. Drumwright, president of the student chapter of the American Society of Civil Engineers, believes that the feature which will attract most attention at the C. E. building will be the presentation of the Texas Public Safety Department of Austin. The Safety Department will send their safety bus, which contacts all squad cars throughout the state daily, to the

college, and from the C. E. building the operators of the bus will talk to the drivers of these cars by radio.

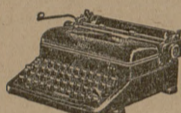
Other than the many novelty exhibits the laboratories of the C. E. department will feature a number of scientific presentations. All exhibits will be fully explained at the time they are shown.

Models of College Station's new Easterwood Airport and the State Highway No. 6 intersection at Bryan will also be shown. This highway model was constructed by the civil engineering students and was shown publicly for the first time at last year's engineering show. A model of a city water filter plant is also included in the show's program.

The soils mechanics, highway, photoelasticity, hydraulic, structure, strength of materials and surveying laboratories will each present from two to five exhibits. One Washington, D. C. and three Houston firms will also have exhibits at the C. E. building.

This year's civil engineering show has been under the direction of G. K. Carnes and W. L. Haynes, with Carnes as general chairman of the exhibit.

HIGH SCHOOL GRADUATES and STUDENTS



If you do not own a typewriter you are at a disadvantage for they improve the grades of your reports. Buy your typewriter where a complete repair service is yours for one year, free when you need it.

With this New MAGIC Margin ROYAL Portable, you'll set the margin automatically in 1/3 of the time... Just one of the exclusive modern features.

GUY H. DEATON

Typewriter Exchange

Bryan - Phone 2-5254

Congratulations High School Graduates

DYERS HATTERS
AMERICAN STEAM LAUNDRY
 SEND IT TO THE LAUNDRY
DRY •• CLEANERS
 Phone 2-1585 Bryan

Let's Go Out To Uncle Ed's



You will find that every Aggie has heard this expression because you can have such a swell time there. We have good music, prompt service and delicious foods. True Aggie spirit predominates here.

HRDLICKA'S

College Station - On Old College Road

Chemical Engineers Exhibit Chemistry in War and Industry

Chemicals and their use in warfare and the adaption of chemicals to modern day industrial uses plus a few exhibits on the humorous side will be featured today by the department of chemical engineering.

In connection with the application of chemistry to warfare, the students in the department who are studying Chemical Warfare Military Science have taken over a special exhibit to demonstrate the use of mortars which fire the chemical ammunition. Displays will show various chemical gases and their effect on human beings. A special feature of the exhibit will be the demonstration of gas masks and their use.

Industrial exhibits will include an exhibit on photography and one on wetting agents. There will be another on dyes and synthetic rubber. Chromium plating and soap manufacture will be on display. A model sulfur mine will be set up,

and a model plant for manufacturing sulfuric acid is also to be exhibited. Other exhibits of this nature include the molding of plastics, an everflowing oil well, a liquid air show, chemical gardens, manufacture of paper from Southern Yellow pine, a glass model refrigeration system, submerged combustion, and a petroleum testing laboratory.

Oscar the "Mathematical" machine will accept questions from the visitors and put them through a "process" and derive an answer—supposedly chemically. He answers all types of questions and gives all types of answers. There is no limit to Oscar's ability. Other humorous exhibits will include balances for weighing a visitor's name, another will give the visitors their name in glass.

Chairman of the committee for arranging this exhibit is E. H. Ivey of Dallas. The exhibit will be in the Petroleum building.

Airplanes and Motion Pictures Will Feature Aero Engineers Exhibit

The exhibit of the Aeronautical Engineering department on the Engineer's Day Program will be one of the most interesting on the program, in spite of the fact that the department is the newest on the campus, according to W. A. Collins, student chairman.

A moving picture, "History of Aviation" will be given which will show the progress of the airplane from the time of its invention by the Wright Brothers to the present-day types. The different types which includes the bomber, the pursuit plane, the observation plane, the attack plane, will be shown during the different steps of manufacture. The functions of each type of plane will be shown.

Engines ranging from 65 H. P. to 525 H. P. will be on display and they will be put into operation by the students. The drafting room

will be open and the designs of the students will be on display.

Besides the engines, all parts of a plane will be on display and each part will be explained. There will be a demonstration of the construction of the wings and an explanation of how they supply lift to an airplane. The various instruments which are used in controlling the flight of a plane, the fuselage of PT-9 and Meyers Trainer planes, and the propellor will be explained.

A wind tunnel which is used in the testing of the different models of planes before they are actually constructed will be on display and will be demonstrated by the students.

H. W. Barlow is the head of the Aeronautical Engineering department and W. A. Collins is chairman of the exhibit committee.

All Types of Modern Petroleum Production and Analysis to Be Shown

All types of modern petroleum production and analysis will be in operation for inspection by visitors today by the Petroleum Engineering department in the Petroleum-Geology building and in the Amcot field behind the building.

Four producing wells will be in operation showing the various methods of getting oil from wells, gas-lift, pump and others.

In the drilling and production laboratory cores taken from the Woodbine sand of producing fields in East Texas will be analyzed for oil and gas content and production possibilities. Methods of testing cements and drilling muds will be

in operation also.

The portable drilling rig will complete a well at the 450 foot sand and bring it into production in the Amcot field.

Another interesting feature of the petroleum show will be the operation of equipment used in the analysis of crude oil and oil field products.

Flow-measuring devices, orifice well testers, orifice meters, positive displacement meters and pressure regulators will be on display in the gas laboratory. Equipment for the determination of the value and specific gravity of gas will be in operation also.

Model House Exhibit Is Big Feature of Architecture Department

Model houses designed by the senior architecture students will be featured in the architecture exhibit on the fourth floor of the Academic building today. These models were displayed at the Fine Arts Museum in Denton where over 3000 persons from all parts of the state saw them exhibited. They are about one-half inch models, in fine detail, one of which was chosen to be built on the campus of T. S. C. W. in Denton.

Also on the program will be a national defense project by the freshman class together with the complete layout of Bryan's rehousing of the slums which has been presented for five consecutive years.

A model farm designed for a family in Alice, Texas, as well as recent work on reconditioning of a Bryan store will be presented by the junior class.

1926 1940
 SAME LOCATION 14 YEARS
 Try Us First - We Have It!
 ●
 EVERYTHING YOU NEED
 FOR YOUR ROOM
 ●
CAMPUS VARIETY STORE
 North Gate

High School Seniors
 ACCEPT OUR
CONGRATULATIONS
 and
GREETINGS
 May honest success be yours as you embark upon life.
 May you select a great college to prepare for the success you desire.
OUR AMBITION IS FOR YOU TO ATTEND A. & M. COLLEGE OF TEXAS
 When you come, remember you will be following the footsteps of thousands of AGGIES when you come to J. C. Penney Company, Inc. at Bryan, only ten minutes from College Station, to supply your uniform needs. We save you around 20% on your requirements of strictly regulation equipment.
 PENNEY'S have been a boon to the American public for over 38 years in supplying merchandise of merit at moderate prices. Bring mother and dad to our store in September and save a lot of money.
 Ask any upperclassman about Penney's. He knows. A big school makes big men.
 COME TO A. & M.
J.C. PENNEY CO.
 "AGGIE ECONOMY CENTER"
 Bryan, Texas

CITY OF COLLEGE STATION

Incorporated in 1939

A. and M. College and College Station are nearly synonymous terms. The community was incorporated in 1939, in order that the needs of its members could be better served. Its growth depends upon the growth of A. and M. College. To those who are now in A. and M. or who have made their decision to come to A. and M. the Administration pledges its cooperation and the cooperation of its citizens in any enterprise which will make this community a better place in which to live.