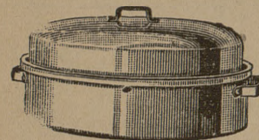


# Official Notices

SCHEDULE OF EVENTS  
November 25 and 26—Horticulture So-

## TURKEY ROASTERS



We have a large stock to select from . . . Six sizes—Aluminum and Enamelled . . . Self Basting Drip-Top. As low as—

79¢

## CARVING SETS

\$2.50

## FOOD CHOPPERS

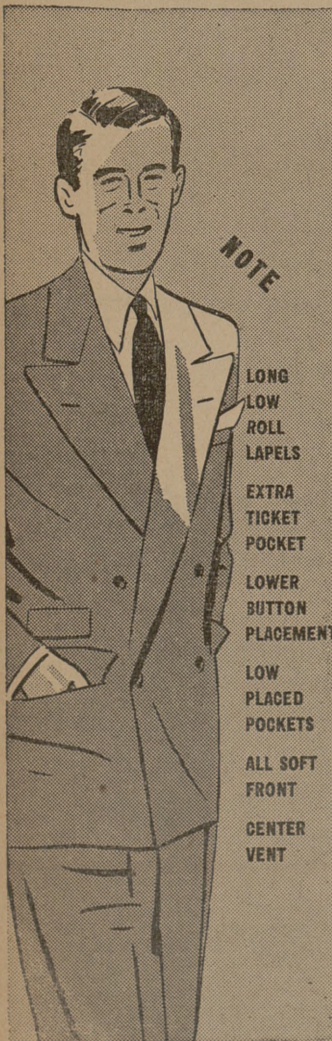
89¢

## PARKER-ASTIN Hdwe. Co.

Bryan, Texas

A Varsity-Town Original

## THE "UNIVERSITY LOUNGE"



NOTE

- LONG
- LOW
- ROLL
- LAPELS
- EXTRA
- TICKET
- POCKET
- LOWER
- BUTTON
- PLACEMENT
- LOW
- PLACED
- POCKETS
- ALL SOFT
- FRONT
- CENTER
- VENT

Of course you'll want to look your best for the thanksgiving Holidays. So we suggest "University Lounge" . . . in double or single breasted lounge models . . . They're correct in every detail and tailored in all the favored fabrics and colors. \$25 to \$35

### Waldrop & Co

"Two Convenient Stores" College Station - Bryan

ciety Show—Agriculture Building—8 a. m. to 9 p. m. daily.  
November 26—Corps Dance—Mess Hall—9:00 p. m. to 1:00 a. m.  
December 2 to 4, Inc.—Dairymen's Annual Meeting (A. L. Darrell)  
December 4—Jean Dickenson Concert—Town Hall—Guion Hall—8:00 p. m.  
December 4 and 5—Municipal Engineer's Short Course  
December 6—Tumbling Team Benefit Show—Assembly Hall—8:15 and 6:30 p. m.  
December 6—American Society of Civil Engineers Dance—Sbisa Hall—9:00 p. m.

### SENIOR R.O.T.C.

All students who have completed R. O.T.C. work under contract will complete their work at the end of this semester and will graduate from the college this semester. Without delay to the Sergeant-Major's office, second floor Ross Hall to file application for commission as second lieutenant in the Officers Reserve Corps.

### WISE Adjutant

### NOTICE

The following seniors should call at room 133, Administration Building, for their six application size photographs that are included with their personnel leaflets: Lloyd G. Conrod, Raeford G. Evans, Brock H. Faulkner, Ralph B. Blagraves, Randall Henderson, Doyle T. Horton, M. E. Innan, Jr., John W. Jorns, George R. Lewis, Tracy B. Meaders, Edgar L. Pettit, Eckwood H. Reagan, Victor E. Schember, William L. Shirley, Robert S. Stone, L. C. Walker, Ernest L. Wehner, William G. Whitehead.

LUCIAN M. MORGAN, Director Placement Bureau

### NOTICE

Senior Electrical and Mechanical Engineering students who are planning on interviewing the representative of Westinghouse Electric Manufacturing Company for employment upon graduation MUST turn in their executed student interview record before 5 p. m. Wednesday, November 27. These may be turned in at the E. E. Department, M. E. Department or Room 133, Administration Building.

LUCIAN M. MORGAN, Director Placement Bureau

### AGRICULTURIST MAGAZINE STAFF

There will be a short, but IMPORTANT meeting of the following boys in 126, Administration Building this afternoon at 5:00 o'clock. Be present and bring any material that you have ready for the December issue of the AGRICULTURIST.

- Tom Power
- George Taylor
- Tom Richey
- Roland Bing
- Tom Gillis
- Lee Rice
- Walter Cardwell
- Jack Miller
- David Pison
- V. A. Yentzen
- Phil Goldman
- Jack Jones
- Bob Button
- Ed Douglass
- Mortan Robinson
- Graham Purcell
- Jack Aycock
- Jack Hollaman

OFFICE OF THE COMMANDANT  
A. & M. COLLEGE  
COLLEGE STATION, TEXAS  
22 Nov 40

### CIRCULAR NO. 21:

1. The Corps of Cadet will move to Austin, Thursday morning, November 28, 1940, via Missouri Pacific Railroad to parade and attend the A. & M. - Texas University football game.
2. Calls will be sounded as follows:  
1st Call, Reveille (no formation) 5:00 A. M.  
Mess Call, Breakfast 5:03 A. M.  
Assembly 5:05 A. M.
3. Units will march to the Missouri Pacific depot in the order given below which will be followed in entraining. Tactical Officers detailed to ride the trains will accompany their units from their assembly areas to the depot. Troops will march from their respective assembly points at 5:45 A. M.  
a. Time of departure—6:15 A. M.  
Tactical Officers—Col. Wing, Major Spiller, Major Fox, Major Hollinghead, Major McIntyre, Captain Elwood, Captain McCulley.  
Troops—Band, Corps Staff, Infantry Regiment, Field Artillery Regiment, Composite Regiment, Cavalry Regiment, Engineer Regiment, Coast Artillery Regiment.
4. a. Railroad tickets are on sale at the Missouri Pacific Depot and round trip tickets may be purchased for \$17.5 each.  
b. Regimental Commanders will report to their respective Tactical Officers to familiarize themselves with the details of the parade.  
c. A cadet officer will accompany each organization on the train and senior cadet officers will be stationed in each end of the coaches to see that students do not get off the train when stops are made enroute. Vestibules will be kept closed.
5. DETRAINING:  
The special train will arrive in Austin at 9:15 A. M. Organizations will de-train promptly upon arrival and march in column of twos to assembly areas, as follows:  
Corps Staff—Intersection of Congress Avenue and West Second Street.  
Field Artillery Band—Intersection of Congress Avenue and West Second Street.  
Infantry Regiment—North Side of West Second Street between Congress Avenue and Colorado Street, head of column on Congress Avenue.  
Field Artillery Regiment—East side of Colorado Street between West First Street and West Second Street, head of column on West Second Street.  
Composite Regiment—East side of Colorado Street between West Second Street and West Third Street, head of column on West Second Street.  
Infantry Band—Intersection of Colorado Street and West Second Street.  
Cavalry Regiment—North side of West Second Street between Colorado Street and Lavaca Street, head of column on Colorado Street.  
Engineer Regiment—East side of Lavaca Street between West First Street and West Second Street, head of column on West Second Street.  
Coast Artillery Regiment—East side of Lavaca Street between West Second Street and West Third Street, head of column on West Second Street.
6. BAGGAGE:  
a. Immediately after halting in position at the parade assembly area, each squad will make up a squad roll containing all overcoats

and raincoats, securely tied in one bundle and tagged with two tags to each roll. Tags will be distributed by Company Supply Sergeants. Hand baggage will be marked with chalk—the name of the owner, organization, and arm; example, Joe Smith, Troop "C" Cavalry. Rolls and baggage will be placed in baggage trucks provided. Baggage will be obtained from truck at point of dismissal. Four men will be detailed from each battalion as guards to remain with property and safeguard same during the parade.

b. On detrainning members of the Band will secure instruments from the baggage coach and proceed to a moving cart provided for the purpose, and leave baggage and instrument cases in the moving van.  
c. Free check rooms for baggage after the parade have been provided at the Chamber of Commerce Building and on West Seventh Street adjacent to the Driscoll Hotel. These baggage rooms will remain open til 12 midnight, Thursday, November 28, 1940.

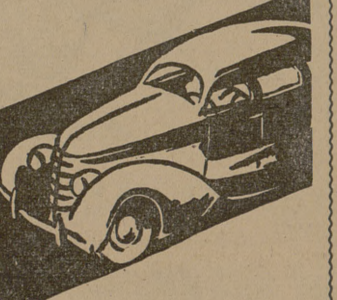
7. PARADE:  
a. Time: 10:00 A. M.  
b. Assembly: Organization will assemble in the respective areas designated, in column of companies, each company in mass formation.  
c. Order of March: Corps Commander and Staff, Field Artillery Band, Infantry Regiment, Field Artillery Regiment, Composite Regiment, Infantry Band, Cavalry Regiment, Engineer Regiment, Coast Artillery Regiment.

d. Formation: Column of regiments, battalions in column of companies, companies in mass formation at close interval, with a 9 man front.  
e. Route: Congress Avenue to the Capitol grounds.  
f. Reviewing Stand: The Reviewing Stand will be located at the Austin Hotel.

g. Colors, Standards and Guidons: Colors, Standards, and Guidons will be carried. Regimental Standards will salute. After the parade the Colors, Standards and Guidons will be placed in the Band van under the supervision of one Color Sergeant designated by the Corps Commander. The Band van will be located immediately back of the Capitol Building (north side of Capitol grounds).  
h. Dismissal: Capitol grounds.

8. UNIFORM:  
a. No. 1 uniform.  
b. Non-military students and other students that are not required to purchase a blouse are authorized to wear civilian clothes with coat and tie.  
c. No. 2 uniform will be non-regulation.

## Safe-T-Way



TAXI SERVICE  
Phone Bryan 1400

Have you a way to take that "little woman" home after the dance?  
Call us for quick and efficient service.

## W. J. Douglas, Jr. INSURANCE AGENCY

General Insurance  
Commerce Bldg  
Phone Bryan 160

## Fuller Elected Head Of New Home Town Club

Cadets from Jim Wells, Brooks, Duval, Kleberg, Live Oak, and McMullen counties met last Thursday evening in the new Y. M. C. A. to organize a home town club. Officers elected were Jack Fuller, Alice, president; John Ragland, Alice, vice-president; Bill Coker, George West, treasurer. Plans for a Thanksgiving dance were discussed.

DRIVING TO SOUTH DAKOTA and return over Thanksgiving holidays. Can take 4 all or part way and return. If interested call Bryan 7163.

FOR RENT—New four-room apartment with private bath. Newly furnished, including electric refrigerator, and garage. Located in College Hills Estates near campus. Ben D. Alexander, 4-8504.

FOR RENT—Furnished apartment, two rooms, near College. Garage if you want it. S. V. Perritte, Phone 4-8794.

FOR SALE—Four Cocker Spaniel pups. Address 802 E. 25th Street, Bryan. Phone Bryan 647.

DIYERS HATTERS  
**AMERICAN STEAM LAUNDRY**  
SEND IT TO THE LAUNDRY  
**DRY · CLEANERS**  
PHONE 585 BRYAN  
Patronize Your Agent in Your Organization

## SOUTHERN PACIFIC LINES

OFFER  
FAST, CONVENIENT TRAVEL  
FOR  
THANKSGIVING HOLIDAYS

Round Trip Fares:

Houston	\$ 3.40	Beaumont	6.40
Ft. Worth	6.00	Texarkana	10.40
Dallas	6.00	Amarillo	18.25
San Antonio	7.00	El Paso	26.95

For Further Information Call 4-1175

## Southern Pacific

T. H. BLACK, Ticket Agent -- H. A. SHAVER, T.P.A.

LET'S BEAT THOSE LONGHORNS!  
Thanksgiving Greetings From  
Your Favorite Store—  
**LOUPOT'S TRADING POST**  
North Gate

MOW EM DOWN ON THANKSGIVING  
AGGIES and shop at PENNEY'S

For a Really Merry Christmas  
FIRESIDE COMPANIONS  
**Men's ROBES**  
**4.98**  
Warm All Wool Flannel!  
He'll marvel at the warmth and light weight of these smart robes! ALL WOOL flannel in rich solid colors. The expensive looking tailoring includes notch or shawl collars, roomy pockets and fringed sashes.  
**Men's ROBES**  
**2.98**  
Solid colors, checks and all-over patterns in Whiten-ton blanket cloth! Big pockets. Braided sashes!  
Lounging  
**ROBES**  
**3.98**  
Rayon Satin Trimmed!  
Dressy robes in fine cotton and rayon jacquard! With shawl collars, fringed sashes.  
**PENNEY'S**  
J. C. PENNEY CO., INC.

DO YOU SMOKE THE CIGARETTE THAT Satisfies  
IT'S THE SMOKER'S CIGARETTE  
**CHESTERFIELD STARS A Milder BETTER TASTE**  
Made for smokers like yourself  
Its right combination of the best tobaccos that grow and its modern cigarette making methods, make Chesterfield a completely satisfying smoke, pack after pack. That's why people call it  
*the Smoker's Cigarette*  
Make your next pack Chesterfield. They satisfy with their Definitely Milder, Cooler, Better Taste.  
MAKE YOUR NEXT PACK  
**Chesterfield**  
Every step in the making of Chesterfield Cigarettes is supervised by skilled inspectors. One is here shown examining a "hand" of tobacco before it goes to the summary where every part of the stem is removed. (As seen in the new film "TOBACCOLAND, U. S. A.")  
BETTE DAVIS  
starred in Warner Bros. current hit  
"THE LETTER"  
Copyright 1940, LUCRET & MYERS TOBACCO CO.

Y.M.C.A. BARBER SHOP  
THE VARSITY BARBER SHOP  
OUR MOTTO: "A Better Haircut Than You Can Get Anywhere!"  
See Our  
Hair Oils - Hair Tonics - Shampoos