

# College Executives Plan Big Year

## Students Should Meet And Know Their College Administrative Officials

The men who are responsible for the administration of the affairs of any school are its officials. Ten men at Texas A. & M. college have these duties, and these responsibilities. Guided by President T. O. Walton, these men direct the course of the school.

Believing that all the students should know them and what they do, we print their pictures on this page with accompanying thumb-nail sketches of their individual accomplishments. These men welcome and encourage visits from students who would avail themselves of this opportunity for guidance and counsel and for valuable contacts with men pre-eminent in their respective fields.

### T. O. WALTON

President of the college since 1925, Dr. Walton came to A. & M. in 1916 as state agent with the Extension Service. He was made director of same in 1918, retaining that position until his selection as president of the college. Eminent in national affairs, he has held this position during the period of A. & M.'s greatest growth and most radical changes.

### F. C. BOLTON

Dean Bolton was once a major in the cadet corps of Mississippi A. & M. and also served as commandant one year. He was brought to this college as a professor of physics and electrical engineering. In 1922 he was made dean of engineering and served until 1927. Now he is vice-president and dean of the college.

### COL. IKE ASHBURN

Executive assistant to the president, he was appointed to that post in 1937, when he resigned as head of the Texas Good Roads Association and publisher of the Texas Parade. First connected with the

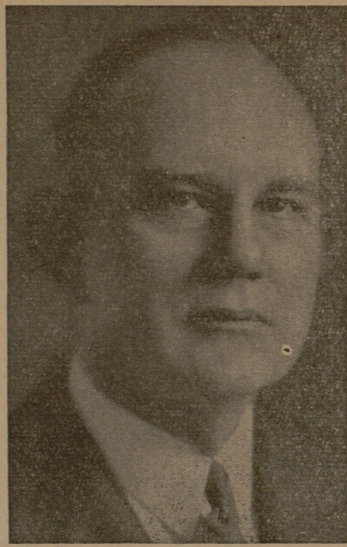
### Liberal Arts Dean



DR. T. D. BROOKS

college in 1913 as director of publicity, he has been commandant of the school and executive secretary of the Former Students Association.

### A. & M. President



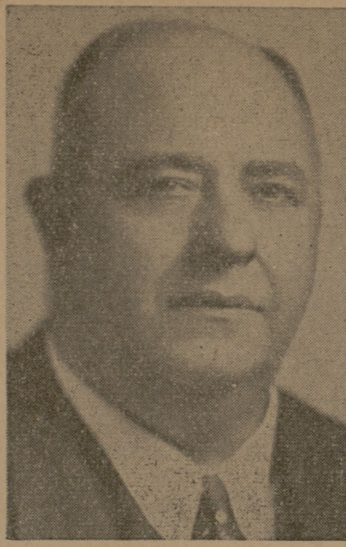
DR. T. O. WALTON

### Vice President



DR. F. C. BOLTON

### President's Aide



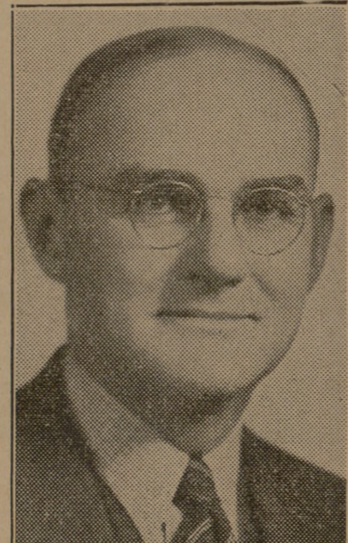
COL. IKE ASHBURN

### Agriculture Leader



DEAN E. J. KYLE

### Engineering Head



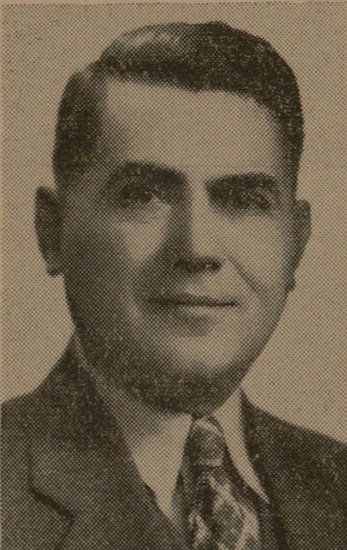
DEAN GIBB GILCHRIST

### Veterinary Chief



DEAN R. P. MARSTELLER

### The Registrar



E. J. HOWELL

A graduate of A. & M. in 1889, Dean Kyle first became a member of the teaching staff in 1902. He has been head of a department and was made dean of agriculture in 1911. His master of science degree is from Cornell University. He has authored numerous bulletins and texts on agricultural subjects and is an outstanding figure in the

### Student Publications



E. L. ANGELL, MANAGER

### Alumni Secretary



E. E. McQUILLEN

growth and development of agriculture in the South.

### GIBB GILCHRIST

In his career, Dean Gilchrist has held many jobs of importance throughout the state of Texas. Graduating from the University of Texas in 1909, he was assistant engineer and head engineer of the Santa Fe Railroad, and has served as division engineer of the highway department at San Antonio. In 1924 he was made state highway engineer. He also has served as an officer in the Engineer Corps during the World War I. He was made dean of engineering at Texas A. & M. in 1937 and is devoting his efforts to placing more A. & M. engineers in modern industries.

### T. D. BROOKS

Dean of the School of arts and Sciences and of the Graduate School, a graduate of Baylor, Dr. Brooks has served as principal and superintendent of schools at Hillsboro, president of Southwestern

Francis as dean of veterinary medicine.

### E. J. HOWELL

Registrar of the college, E. J. Howell took his B. S. degree in chemical engineering at A. & M. He taught chemistry a year at John Tarleton Agricultural College, and was also registrar and commandant there. Mr. Howell has been in the registrar's office at A. & M. since 1930. He is now president of the Eighth Corps Area Council of the Reserve Officers Association.

### E. L. ANGELL

Last year E. L. Angell had added to his position of manager of student publications the title of business consultant for student activities at A. & M. He has been in this former office since 1936. Having

done graduate work in Chicago University, he has been a reporter on a daily paper, a school official, a school superintendent as well as a representative of the State Department of Education before coming here.

### E. E. McQUILLEN

Present executive secretary of the Former Students Association, E. E. McQuillen was a cadet lieutenant colonel his senior year when he graduated in 1920 in animal husbandry. Also that year he played on A. & M.'s outstanding basketball team. He sold insurance in Dallas after graduation, but was brought back to the college as assistant to Col. Ike Ashburn, who was then executive secretary of the association. Mr. McQuillen was made secretary upon Col. Ike's resignation in 1926, and has held that position since that date.

**HELLO AGGIE!**  
When Is Your Mother's Birthday?  
(.. Or Your Girl's)

Of course you are going to give her a birthday gift. Send your Mother (or your girl) something that she can use, something practical; and that certainly will be no problem if you select it from the Smart Shop. We will be glad to assist you in every way possible in choosing her gift.

We have a beautiful stock of fine merchandise, things that women appreciate, so when you need something to send to your Mother or Sister, Cousin, (or your girl) get it at the Smart Shop.

You know, "It Will Please Them More From a Ladies Store."

Distinguished Wear For Women  
ACCESSORIES - LINGERIE - COSMETICS

Lester's SMART SHOP

# Natural GAS

Is Your Lowest Priced Domestic Servant

# 1 cent

- Will cook a good dinner for 3 people
- Will operate a bathroom heater for 2 hours
- Will heat enough water for 2 baths
- Will operate a living room heater 45 minutes
- Will make 33 cups of coffee
- Will heat enough water for 14 morning shaver
- Will operate a laundry dryer 45 minutes
- Will operate an incinerator 15 minutes
- Will run a gas refrigerator from 8 to 10 hours

Lone Star Gas Co.



that EXTRA TOUCH

...AT OUR FOUNTAIN

DRINKS THAT SATISFY!  
SANDWICHES - TOBACCO  
CANDY - PIPES

## George's Confectionery

In The New "Y"



Our chef is a mighty particular fellow—uses only choice quality foods to make up a varied menu served as you like it.

GOOD FOOD  
meets  
LOW PRICE  
at

CHEF JOHN'S STEAK HOUSE

On Highway 6 — Next to Grant's Service Station



15¢ to 5 p. m.

# CAMPUS

20¢ After 5

TODAY - - THURSDAY

The Dead End Kids

-in-

"YOU'RE NOT SO TOUGH"

with NAN GREY

FRIDAY - - SATURDAY

Richard Arlen and Andy Devine

-in-

"DANGER ON WHEELS"

-Also-

LATEST WAR NEWS - - CARTOON

PREVUE SATURDAY NIGHT - - SUNDAY - - MONDAY

Joan Bennett - Douglas Fairbanks, Jr.

-in-

"GREEN HELL"