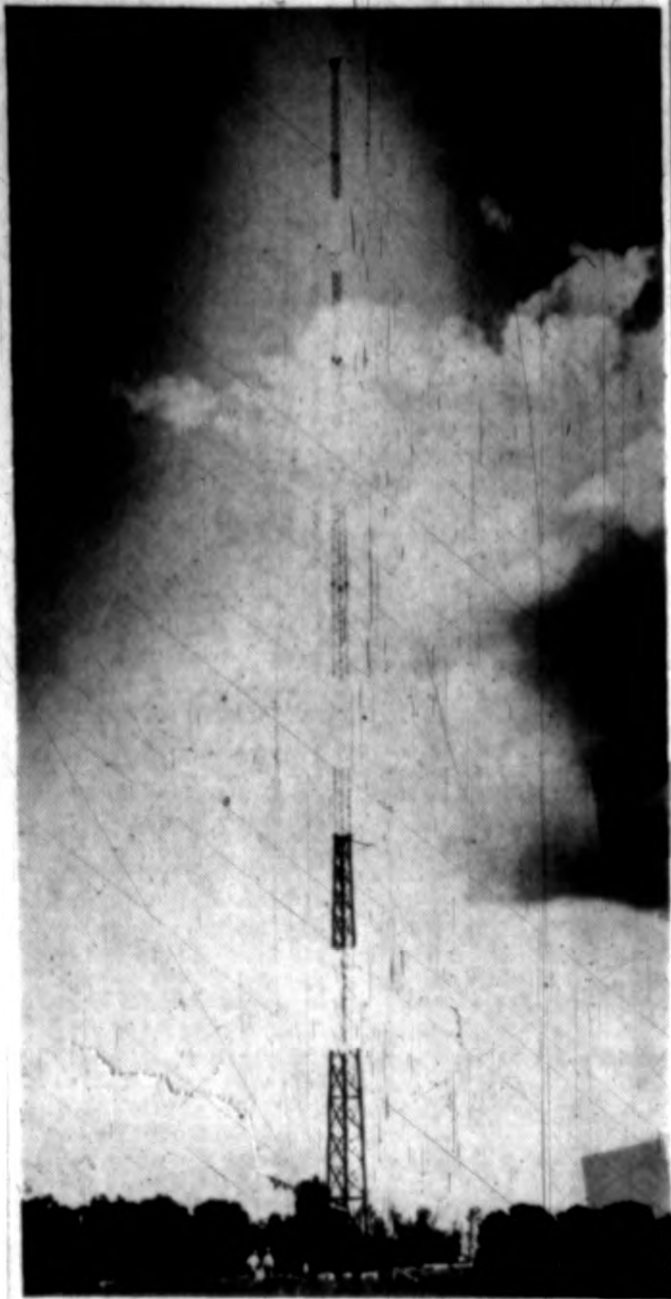
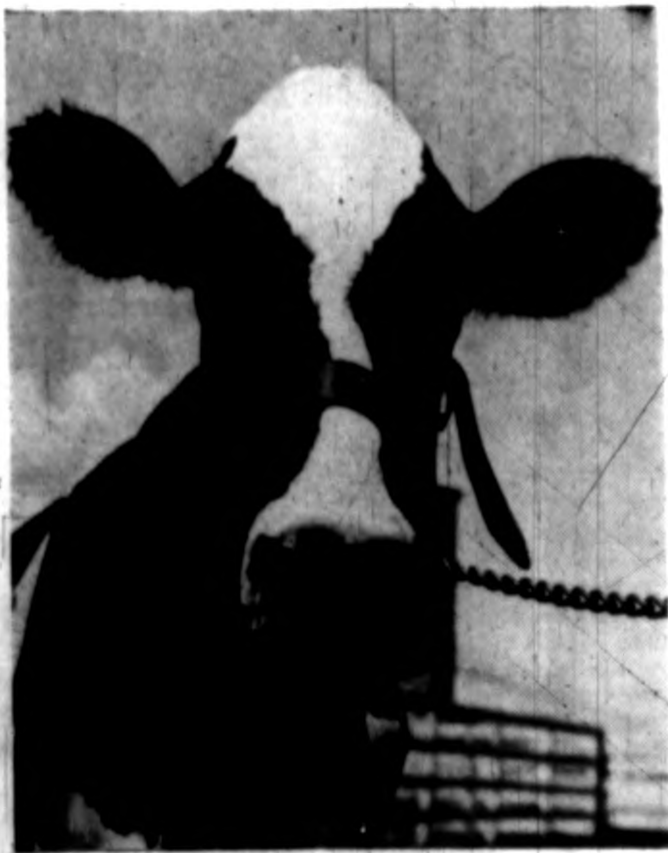


220 Feet High Looks 500



—Photo by Phil Golman
This slender steel structure is the new antenna erected for radio station WTAW. By use of this piece of equipment the effective broadcasting range of the station has been increased to 40 miles. The alternate dark and light painting is an effort to make it plainly visible from the air.

She Feeds The Most Aggies



—Photo by Phil Golman
This is Paulantha Aggie Pusch, the prize cow of the College Dairy. Figures on her milk production record for last year reveal that in the 365-day period she gave 16,551 pounds of milk with 582.4 butter fat, which is nearly three and one-half times that of the average dairy cow. She is a three-year old Holstein.

Many Houses Are Being Built in College Additions As Campus Residents Move Out

By Margaret Ann Williams
The general exodus from the campus has begun. More and more vacant houses and overgrown yards dot the campus as the faculty residents move off into the nearby residential sections. Since the notices to vacate the residences by September, 1941, were sent but last year, the where-to-live topic has been the most frequent subject of conversation among the faculty members living on the campus. Judging from the number of houses now under construction around the campus, this is a mighty good place for a carpenter.
The Geo. Summeys, the W. L. Fenberthys, and the J. K. Walkers have all moved into lovely new houses in North Oakwood. T. F. Mayo has also purchased a house in this addition but he hasn't

Changes IN Plans For 'Y' Announced

Cashion Promises Y Will Absorb New Tax Without Price Raise

Various changes in the arrangements for Assembly Hall picture shows for next year have been announced as imminent by M. L. Cashion, secretary of the Y. M. C. A.

The fact that the federal government has levied a tax on motion picture admission price to be used for national defense will be absorbed by the Y. M. C. A. in the present admission and will not increase the price students will have to pay. In effect it will amount to a reduction in the price of shows so that with the tax attached, the total admission price will remain unchanged. Mr. Cashion explains that this plan will save considerable bookkeeping and change-making as well as financially benefiting the student body.

Because the Board of Directors took no action on the proposal to renovate Guion Hall, it will not be possible to have it in use by the time school starts unless the Board meets in the first week of September. The next regular meeting is in October. W. S. Hipp of the Western Electric Company who has charge of servicing the projection and sound equipment estimates that the move can be made in about a week once the order to move is given, and that the complete metamorphosis should take less than two weeks.

Work on the picture schedule for Assembly Hall shows has proved that several changes need be made. Heretofore benefit shows have been run on Thursday and Friday nights. According to the plans for next year, the organizations will still get two showings but they will consist of a matinee and a night show on Friday.

This change means that the groupings of days will be changed, too. Shows good on the "Y" card program will still be shown on Saturday night with 25¢ admission for persons not possessing the privilege card. A picture will be played on Monday and Tuesday matinee and night shows if the permission is granted to show a Monday night show. Another picture will run Wednesday and Thursday. These will be 15¢ admission pictures.

The times for the beginning of the programs will be the same as for last year, 3:30 p. m. for matinee, and 6:45 for evening shows. On Saturday afternoon the matinee (Continued on Page 4)

Officer and Sergeant Meet For First Time In Seventeen Years

Capt. Ernest A. Ellwood, Field Artillery, who was called from retirement to active service and ordered to Texas A. & M. College last May, and Sergeant O. B. Jackson, in charge of the U. S. Army recruiting office at the Courthouse enjoyed a few minutes reunion Wednesday morning.

Capt. Ellwood, with the 4th Field Artillery back in the 30's, had been stationed at Fort Sam Houston and then was ordered to Laredo. In 1923 and 1924 Sergeant Jackson was his battery clerk.

The two men had not met since 1924 but when Capt. Ellwood walked into the recruiting office Wednesday morning Sergeant Jackson immediately recognized him.

Death Takes Former Student Norman J. Dansby, of Bryan

News of the passing of Norman J. Dansby, former student of A. & M., at a hospital in Houston a week ago last Wednesday came as a great shock to his many friends.

Norman J. Dansby was a son of the late H. P. Dansby and Mrs. Minnie M. Dansby. He graduated from A. & M. in 1926 after a career as an outstanding football player. He is survived by his widow, Mrs. Sue Dansby, his mother, and two brothers, Mit Dansby and H. P. Dansby, Jr.

Will Succeed Mangelsdorf



C. H. McDowell, above, who has been appointed by the Board of Directors as Vice-Director of the Agricultural Experiment Station succeeding P. C. Mangelsdorf who recently resigned.

C. H. McDowell Selected Vice-Director Texas Agricultural Experiment Station

For 25 years associated with the Agricultural Experiment Station, C. H. McDowell climbed to a higher rung on the ladder of success when he lately received notice of his appointment as Vice-Director of the Agricultural Experiment Station. He succeeds P. C. Mangelsdorf, who recently resigned to accept a position in Harvard. Mr. McDowell's appointment is effective September 1.

A former student of A. & M., McDowell graduated from the college in 1912 and received his Master's degree in 1936. He has worked and experimented in four of the principal farming regions of Texas and has established himself as an organizer and manager. First identified with the Experiment Station in 1917, at which time he was Superintendent of the Denton Station, he resigned in 1922 to accept a position on the Taft Ranch. In 1930 he was appointed Superintendent of Substation No. 16 at Iowa Park. Here he placed the affairs of the station on a substantial basis.

Since 1937 he has had the position of Superintendent of the Blackland Experiment Station at Temple. This station is a joint enterprise with the Federal Soil Conservation Service; and the results obtained from research at this location are proving of value, not only to the agriculture of this region, but to the state as a whole. In recommending McDowell for the vice-directorship, A. B. Conner, Director of the Texas Agricultural Experiment Station, said, "Mr. McDowell has actually conducted experimental work and farming operation in the principal farming regions of the state and has worked with almost all branches of agriculture, including animal husbandry, entomology, plant pathology, and other lines. I consider this experience a very important qualification for service as Vice-Director."

Industrial Engineering Department Is Created; Judson Neff Is Head

A new department under the guidance of Judson Neff, M. E. '28, to be called the Industrial Engineering Department is being established with offices at present in the Petroleum Engineering building. The department will offer courses this coming year in the training of students in the management of industry.

Instruction in the new department is to concentrate on rounding out the Engineering knowledge of students who take the basic Engineering courses and to increase their chances of success in industry, according to Mr. Neff. Background work in accounting and statistics, economics, finance, and marketing in connection with Engineering will be offered in the curriculum which will be announced in the near future.

The department will offer courses in the handling of specific engineering and industrial problems and will stress decision-making on the part of the student. Staff and organization problems of the department are unsettled at this time but will be cleared up in order that the students will find courses available in this field at the beginning of the fall term.
Mr. Neff, head of the department, graduated from Texas A. & M. in 1928 with a B. S. in Mechanical Engineering. Since his graduation he has had many years of practical experience in engineering and industrial work, both in this state



Judson Neff, who will become head of the newly created Department of Industrial Engineering.

Nationally Prominent Men Lecture at Second Annual Air Conditioning Conference

Aggie-Elect Bikes 1025 Miles To See Willkie

That 17-year old Johnny Stout of Handley, Tarrant county, will receive a personal introduction to the presidential nominee, Wendell L. Willkie, is the word that has come to the Texas-for-Willkie club headquarters in Dallas. Recently Johnny bicycled 1,025 miles from Handley to Elwood, Ind., to be present when Willkie makes his acceptance speech.

Since then the Texas youth has been invited to address several groups in Elwood on the subject of the Lone Star State. Arrangements for Johnny to meet the presidential nominee are being made by the committee in charge of the home-coming ceremonies.

Texasans traveling on the special train to Elwood for the ceremonies Aug. 17 will be met by Johnny Stout who will make the trip home with the Texas party.

In the Fall Johnny will enter Texas A. & M. College.

CHEMURGIC EXHIBIT TO BE SHOWN AT FAIRS

The former advanced another step in becoming closed allied with industry in Texas with the appointment of a Chemurgic Committee to supervise the preparation of an exhibit of agricultural products to be shown at the State Fair at Dallas and at the South Texas Fair at Beaumont.

Represented on the committee are: Mr. M. K. Thornton, Extension Service Agricultural Chemist, who is chairman of the committee; Dr. J. D. Lindsay, acting head of the Chemical Engineering Department; and Mr. D. T. Kilough, agronomist in the Agricultural Experiment Station.

The committee was appointed by the Board of Directors to study plans for the preparation of an exhibit showing how agricultural products can be effectively and economically utilized so as to produce many valuable by-products which can be consumed by industry. The exhibit when prepared will place in the charge of Mr. Elmore R. Torn, member of the East Texas Chamber of Commerce, who is chemurgic director of the two fairs. Professor C. J. Finney of the Architecture Department will be in charge of designing the exhibit.

The various products that will be featured in the exhibit are cotton, corn, peanuts, flax, tung, castor beans, soy beans, sweet potatoes, sesame, perilla, chia and many other agricultural products which, by the coordinating efforts of agronomists and chemists, valuable by-products used in industry can be produced. The exhibit will consist of a display of raw products, a tracing of the products' life cycle from the time it is planted until it emerges as a finished product ready to be consumed by industry, and a photograph section to show things about the product which would be impossible to show by display.

The committee particularly emphasized their thanks to the many departments which have cooperated with them in the designing of the exhibit. An enormous amount of enthusiasm has been shown here on the campus as well as all over the state for the new movement. Many industrial concerns have displaced their faith in the project by furnishing products and exhibit material.

It is the opinion of the committee (Continued on page 4)

Dr. Russell Returns Here After Month's Vacation

Dr. Dan Russell, head of the Rural Sociology Department, returned to the campus last Wednesday after having been away for almost a month.

Dr. Russell has been in Houston and Galveston where he underwent a series of treatments for sinus trouble. It was thought that the salt air along the coastal regions would prove beneficial.

Carrier Is Banquet Speaker; Larson Is Consulting Expert

Featuring nationally famous "big-name" men in the field of air conditioning, the Mechanical Engineering Department opens a three-day short course beginning today and lasting through Saturday. Responsible for the arrangements of the short course is Wayne E. Long, professor in the M. E. Department.

The purpose of this conference is to bring men of industry together to study and discuss the problems, new developments, and new ideas in the fields of heating, ventilating, and air conditioning; to foster a closer cooperation and a better understanding between the several trades and professions; and to assist in building and maintaining a sound engineering foundation for the industry.

Heading the staff of noted authorities will be Dr. F. E. Giesecke, professor emeritus of the Mechanical Engineering Department, who is the national president of the American Society of Heating and Ventilating Engineers. Dr. Giesecke has done outstanding work in the determination of friction losses in six-inch pipe for air conditioning plants. In fact several years ago he drew curves and predicted losses that a recent test run made this summer in the Mechanical Engineering Department.

(Continued on page 4)

Group Insurance Plan To Continue Despite New Ruling

A new ruling presented to the board of directors by Gerald C. Wann, attorney general of the State of Texas, forbidding the maintenance of a group insurance plan by the college, under the present set-up, resulted in salary raising of all college employees over 50 years of age concerned under the group insurance plan, this week. All other employees' premiums will be paid from the group fund.

Since 1931, the College has provided its employees with a method of group insurance whereby the insurance was obtained at a lower rate to the policy holders. Under this plan, the college paid a certain percent of the premiums and the rest was paid by the employee or staff member who held the policy. The group insurance was taken out with the Southwestern Life Insurance Co., Dallas, and allowed those receiving the policies to benefit by the cheaper rates. Effective September 1, all the college employees over 50 will receive a raise in salary to cover the necessary amount which has heretofore been paid by the college but which the college now is forbidden to pay by the new ruling. Under this method the group insurance plan can be continued and the college employees may still receive the benefits of cheaper rates.

The policies were graduated on such a scale, that, though each of the policy-holders held a policy for an amount with respect to salary, age of the employee, and other facts bearing on the amount of the premium and the cost of the insurance, each policy holder received a given percent of his insurance premiums paid by the college. Since it is now forbidden that the college continue this practice, it was necessary to institute this plan to keep the employee from having to pay the full amount of the policy.

This will mean that each employee over 50 will now receive a salary increased by the amount which he has had heretofore paid for him by the college. He will then send this amount along with the remaining amount of the payments he has been making, to take advantage of the group insurance in this new manner. Group insurance can be continued, despite the new ruling, college officials stated, and will result in a continued saving to the policy holders. There will be no change in the amount of the present payments under the new plan.