

A. & M. Track and Swimming Teams in Fort Worth Meet

Varsity and Fish Teams Entered In All Events at Show

Swimmers and runners leave Aggeland this weekend for Fort Worth to compete with other outstanding teams of the Southwest in field, track, and swimming events.

The track teams, both varsity and freshman, are entered in all events of the annual Fat Stock Show Track Meet Saturday. Co-captains Ed Dreiss and John McLean are expected to bring first place honors home to Aggeland in their events, as is J. R. Henderson, who ran third only to the fleet Rideout twins in the 880-yard run at Laredo last week.

Members of the varsity squad making the trip include E. D. Wilmeth, miler; Jim Thomason, shot put and discus; Roy Bucek, 120 and 220 hurdles; Red Cecil, 100, 220 dashes and broad jump; Bill Conatser, high and broad jump; Dreiss, 120 and 220 hurdles; R. F. Finley, high jump; Henderson, 880 run and mile relay team; Pete Henry, discus; M. E. Hogan, mile; Bob Kissinger, 100 dash; McLean, 440 dash and mile relay team; A. R. Nye, pole vault; Ernie Pannell, shot put; Marshall Robnett, javelin; Bob Schiller, mile relay team;

G. L. Seibert, mile relay team; Jude Smith, javelin; Bud Force, Marshall Spivey, Earl Smith and Conatser will form the football relay team.

Freshmen members are Phil Alford, hurdles; G. L. Bridges, 100 and 220 dash; Carlton Brush, 100, 220 and relay; J. H. Japhet, discus and shot; Jimmie Knight, 440 and mile relay; T. A. Mann, hurdles; Jack Petty, 440 and relay; P. J. Ricks, pole vault and high jump; Pete Watkins, high jump; Ray Terrell, broad jump; and E. B. Mayer, 880 and mile relay.

This year's swim meet at the Annual Fat Stock Show is the first to be held and will see representatives from S. M. U., Texas University, New Mexico Military Institute, Oklahoma A. & M., and Texas A. & M.

T.C.U. Boasts Of A Stronger Line, Faster Backfield

A much stronger line, an improved and faster backfield, and more adequate reserves. These are the 1940 football assets at Texas Christian University, as compared with a disastrous 1939 season.

"We'll be definitely stronger—strong enough to take more than one conference game," Coach Dutch Meyer says.

"But most of the other teams in the circuit also report improvement, so about the best we are hoping for is a first-division contender."

A big (210-pound average) experienced (six lettermen and one sophomore) forward wall will do much to cure the major troubles of the 1939 season. Coach Meyer just smiles contentedly when questioned about his line.

But when you mention backfield, he looks just a bit worried. He has quarterbacks galore, with speed and passing ability, but lacking experience in Southwest competition. If Kyle Gillespie's knee operation will stand the gaff, he is the No. 1 man in this spot.

Frank King, who lettered as a soph last year, looks entirely adequate at full. The halfback posts—particularly right half—are still undecided. Coach Meyer has a lot of fast boys, but won't be sure of his best combination until schedule time rolls around next fall.

The World's largest electric light bulb tops the memorial to Thomas Edison at Menlo Park, N. J. It weighs three tons, is 14 feet high, and measures nine feet, two inches at its widest point.

General Electric will distribute \$2,400,000 to its 67,000 employees this year under the company's profit-sharing plan.

In a single week recently foreign orders for iron and steel scrap totalled approximately a million tons, most of the purchases being made by Great Britain.

AGGIES TAKE THE FIRST OF TWO-GAME SERIES WITH FLYERS

Teams Will Play 2nd Game Today At 2:30 on Kyle Field

The Texas Aggies pounded out twelve runs in the first four innings off three Randolph Field pitchers Friday afternoon, before the game settled down to real baseball; and the cadets held out to take the Flyers 12-6. Herman Blackwell started on the mound for the Flyers and allowed four runs during his one-third inning. Dave Alsobrook reached him for a four-base blow. That was all for Mr. Blackwell. Colosky and Bodie followed on the mound with little better luck before 'Lefty' Jacobs came in and held the Aggies at bay in the last five frames.

Alsobrook and Marland Jeffrey led the hitting with home runs. Bob Stone and Jeffrey drove in three tallies. 'Red' Ballow got three runs in his first three trips up.

Scoring for the Aggies: Ballow, three; Jeffrey, three; Stone, three; Alsobrook, two; Pugh, one.

For Randolph Field: Pifer, two; Walker, two; Vielock, one; Devine, one.

The team will play the second of their two-game series with the Randolph Field Flyers on the Kyle Field diamond this afternoon with starting time set for 2:30.

Coach Marty Karow had a good chance to get a better look at his team in action against the Flyers yesterday afternoon and may make some changes from the lineup which started yesterday. First base is coming in for some experimenting with Bill Henderson and Bill Buchanan, gridsters, battling for the job of understudying Marland Pugh. Marland Jeffrey and Jack Lindsey are still battling for the second base job while Cecil Ballow and Bob Stone are alternating at short. Stone is regular on third but when Ballow is lifted he moves to short and either R. C. Adams or Joe Rothe move on to that bag. Rothe, a late reporter due to his football training, looked pretty good in his action so far and may win the job of understudy at either third or short.

Red Kirkpatrick and J. D. Scogins are still hot and heavy for field, and Lefty Moon and Jack Cooper fighting for the right field hole. Dave Alsobrook in center seems to be the only "lone wolf" of the squad. However, Johnny Rice has looked good when he has been in that position.

The pitching staff has not worked long enough to say much about them except that they seem improved over the 1939 staff. They are all expected to account for several Aggie wins this year and practice form indicated that they will.

SPECIAL TRAIN TO BE RUN NORTH THURSDAY

In order to meet the heavy demand for transportation to north Texas over the spring recess it has been arranged by Jack Bailey and Raymond Parrish to run a special Southern Pacific train to Dallas at 3:45 p. m. Thursday.

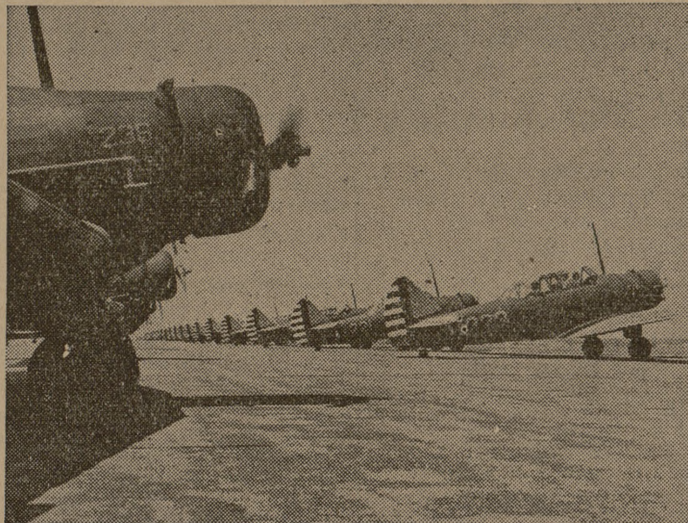
Return will be good on any regular S. P. train other than the "Sunbeam" from either Fort Worth, Dallas, or any point along the line. The cost of the round trip is \$3.65 of which one dollar deposit must be made by Tuesday noon and the balance by Wednesday noon to either Bailey or Parrish at room 426, dormitory 4.

BATTALION Sports

SATURDAY, MARCH 16, 1940.

PAGE 3

BT-9's, Training Ships for Uncle Sam's Future Military Pilots



Low wing monoplanes, known as BT-9's, are used at the Army Air Corps Primary Flying School at Randolph Field, Texas, in the secondary phase of training at the "West Point of the Air."

Powered with 400-horsepower engines, capable of speeds up to 170 miles per hour, these BT-9's are equipped with radio transmitter and receiver, landing flaps, and a two-position adjustable propeller to obtain maximum speeds. Flying Cadets, with veteran instructors, are taught the fundamentals of military flying in about 65 hours of flying time in these BT-9's. Transition from these training ships to the basic trainer plane is gradual, several hours of dual instruction being given before the Flying Cadet is qualified to make a solo flight.

Every six weeks a new class of Flying Cadets arrives at Randolph Field to begin its course in military aviation. The future pilots are between 20 and 27 years of age and are paid \$75 per month while in training.

Chem Engineers To Inspect Industrial Plants Next Week

Thirty-six members of the chemical engineering school will spend four days next week visiting industrial plants in Houston, Galveston, Texas City, Beaumont, and Port Arthur.

Monday, March 18 will be spent in Beaumont where the group will visit the International Creosoting Company, Gulf States Utilities Company, Magnolia Petroleum Company and other points. John Newton, vice-president and manager of the Magnolia Petroleum Company will be host at a luncheon for the students.

The group will spend Tuesday, March 19, in Port Arthur for an inspection of the Gulf Oil Corporation plant in the morning. Luncheon as guests of the Gulf Company at noon, will be followed by a trip of inspection through the asphalt plant of the Texas Company at Port Neches.

Wednesday, March 20, will be spent in Galveston and Texas City areas. The first plant to be visited will be the Texas Star Flour Mills. This will include an inspection of the dock facilities and luncheon will be served by Paul H. Bimmerman, flour mill president. The afternoon will be devoted to a tour of the vast oil refining facilities at Texas City, operated by the Pan-American Petroleum and Transport Company.

Thursday, March 21, will be spent in the Houston area, with visits to the Hughes Tool Company plant, the Sinclair Refining Company plant on the Ship Channel where lunch will be served; the Trinity Portland Cement Company and the Consolidated Chemical Industries.

The students will be accompanied by Professor F. F. Bishop, Dr. J. D. Lindsey and Dr. W. D. Harris of the teaching staff.

Gilchrist Addresses AAUP on Employing A. & M. Graduates

Dean Gibb Gilchrist addressed the A. & M. College Chapter of the American Association of University Professors at its meeting Thursday. He discussed informally some of his experiences as an employer of A. & M. graduates.

As Chief Highway Engineer for the State of Texas in 1924 and again from 1928 to 1937 until he resigned in 1937 to become Dean of the School of Engineering at A. & M., Dean Gilchrist was in a position to employ large numbers of A. & M. graduates and did employ many. From 1925 to 1927 he was an independent consulting engineer in Dallas, this giving him the opportunity of seeing A. & M. College graduates in action

Autograph Hunters—Here's a Good Tip ...

WACO. — Autograph seekers might take a hint from the childhood artistry of Dr. A. J. Armstrong, head of the Baylor University English department, said to be the world's foremost authority on Browning. The scholar's secret has been bared in a student-prepared biographical sketch.

It seems that the lad Armstrong adopted the unique system of addressing black-bordered mournful-looking envelopes to his would-be signers, reasoning that private secretaries would not open such pathetic-looking communications. The plan worked like a charm and autographs flooded in, Dr. Armstrong testifies. The first one was by Rutherford B. Hayes, later President of the United States.

More than 10,000 skulls are preserved in the National Museum in Washington.

The U. S. government recently ordered ammunition to the value of \$2,769,000 for three American manufacturers.

Some Boston University student will win a trans-Atlantic phone call with a leading European statesman in a contest to create interest in a Finnish relief campaign.



AUTO LOANS

• You've got the car. We've got the cash. Let's get together. Using your car as collateral, you can get a cash loan immediately!

• Our helpful loan method enables you to keep your car while you enjoy the cash—title reverts to you as soon as your loan is paid up.

• Come in today and chat with our Auto Loan Advisor.

TITUS-McCULLOUGH Inc.

Phone 1310 - 215 S. Main Bryan

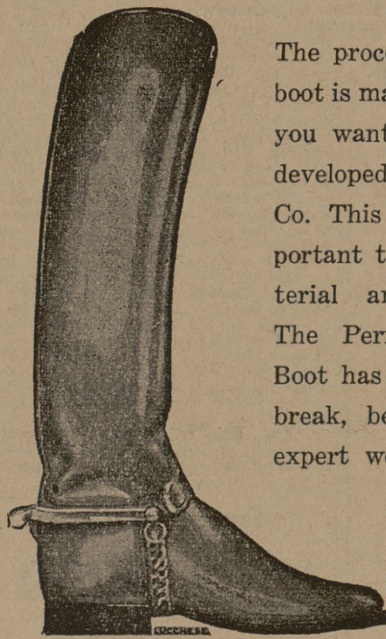
Dr. A. Benbow

DENTIST

Phone 375

Austin Building — Bryan

Attention Class of '41



The process by which this boot is made to break where you want it to break was developed by Lucchese Boot Co. This detail is as important to you as the material and workmanship. The Perfect Ankle-Break Boot has all three: proper break, best material, and expert workmanship.

Lucchese Boot Company

101 Travis Street

San Antonio, Texas

To get more out of your

EASTER VACATION

Take a trip!

by **GREYHOUND SUPER-COACH**

Get a new lease on life this Easter—get out and get the feel of spring during your holidays! It costs so little and you'll see so much on a Greyhound Super-Coach trip.

Ask your Greyhound agent about Greyhound's convenient schedules and money-saving fares. On most trips you can go one way—return another and see twice as much of spring!

ONE-WAY FARES

Houston	\$1.80
Beaumont	3.45
Waco	1.85
Dallas	3.50
Okl. City	7.00
New Orleans	7.75

Aggeland Inn—Phone 4-6614

YOU TRAVEL Best BY **GREYHOUND Lines**

W. J. Douglas, Jr.

INSURANCE AGENCY
General Insurance
Commerce Bldg. Phone B-160

GARBAGE CANS



Heavy Galvanized

PAILS and CANS

Lock on covers

6 to 31 Gallons

PARKER - ASTIN

Hdw. Co.

Bryan

IN PERSON

The MUSICAL SENSATION OF THE GENERATION

M. C. A. Presents

GEORGE HAMILTON and his **MUSIC BOX MUSIC**

CORPS DANCE

Saturday, March 16



Neat and Natty

That's how to look this Spring and Easter. That is how you will look in your new suit—custom tailored to your measure. Come in and select from our fine fabrics today.

NORWOOD'S
Bryan