

CAN SHE TAKE IT?



Above is Miss Mabel Sperry, who will be sliced into four parts by Birch Friday night at the Assembly Hall.

Moore, Junior ChE Student, Appointed U S M A Alternate

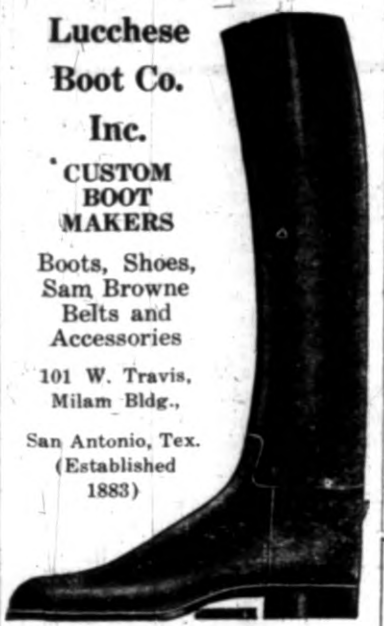
Raymond A. Moore, Bryan, junior chemical engineering student of A and M was designated by Texas Representative at Large Joseph W. Bailey, Jr., as third alternate for the entrance examination to the United States Military Academy. Moore will take the qualifying examinations in July, which will determine his eligibility for appointment.

The principal candidate designated by Bailey was James L. Dunn, Corsicana, and James Nipper, San Antonio, as first alternate. A second alternate has not been recommended.

Lucchese Boot Co. Inc. CUSTOM BOOT MAKERS

Boots, Shoes, Sam Browne Belts and Accessories

101 W. Travis, Milam Bldg., San Antonio, Tex. (Established 1883)



Shoe Repairing

Save Your Sole

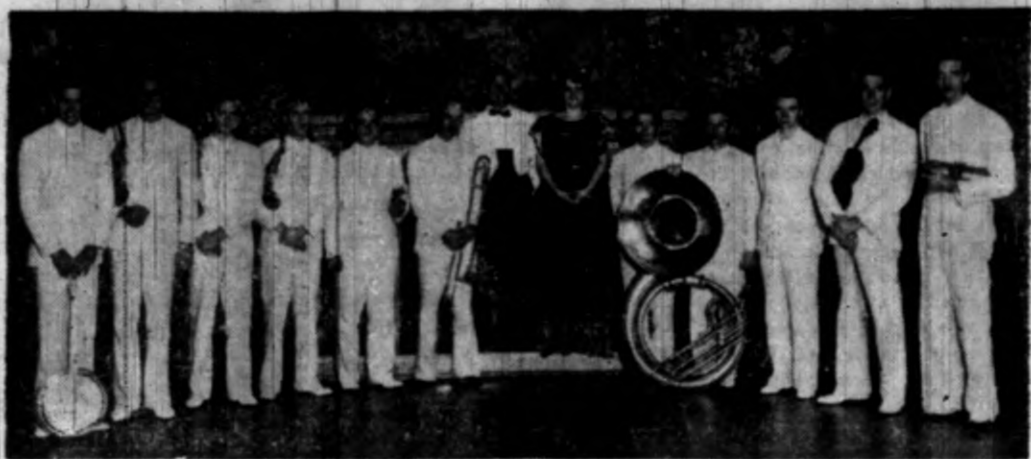
By Having Them Repaired Now!



HOLICK & SONS

North Gate

POPULAR RADIO ORCHESTRA FEATURED WITH STAGE SHOW



Kerry King and his twelve piece novelty orchestra will be one of the attractions presented at the A and M College Assembly Hall, Wednesday, March 7th in connection with the double stage show "Musical Moments" and "Minstrel

Memories". King has one of the most unique and versatile organizations ever to appear with a musical revue; in that every man in the band not only plays from two to five different instruments but each is a talented vocalist as well.

Another feature of King's organization is Buddy Janoush and his back-woods Jug Band. The orchestra features Clovis Rogers, tenor, in addition to a novelty quartet and trio.

College Glee Club Sent Invitation

The Texas A and M College Glee Club has received an invitation to sing at the First Methodist Church in Houston Sunday, March 4, according to an announcement made

today by E. W. Glenn, director of the Glee Club.

This is one of the many invitations that the Glee Club has received this year for appointments from cities over the State to sing before church services and other various receptions.

MICHIGAN STATE—

(Continued from page 1) the 1935 football season is as follows: September 22—Sam Houston S T C at College. September 29—Texas A and I at College. October 5—Temple at Philadelphia. October 13—Centenary at Beaumont. October 29—T C U at College. October 27—Baylor at Waco. November 3—Arkansas at College. November 10—S M U at Dallas. November 17—Rice at College. November 29—Texas at Austin. *December 8—Michigan at San Antonio. *Pending.

LOS ANGELES.—The "Thrill of a lifetime" has been experienced by Standley D. Warnas, Los Angeles Junior College student. He drew 13 spades in a bridge hand! One's chance of being dealt such a hand are 158,753,000,000 to 1, it has been computed.

PRINCETON, N. J.—Enrollment in the Institute for Advanced Study, of whose faculty Dr. Albert Einstein is a member, now totals 20 and is composed entirely of college graduates, most of whom are professor or instructors and who hold advanced degrees.

WELCOME TO A AND M
COACH NORTON
and
POWER
to
YOU
CASEY'S CONFECTIONERY
"Y"

GET A HAIRCUT THAT FITS At CAMPUS BARBER SHOP In the "Y" Bert Smith, Prop.

FAMOUS MAGICIAN TO BE PRESENTED FRIDAY EVENING

Birch, Widest-Known Magician, To Be Sponsored by YMCA and the Swimming Team At Assembly Hall.

Thrilling, Fascinating, Astounding, Wonderful—and not as cruel as it sounds, is this miraculous feat which Birch, Famous Magician, will perform next Friday evening, March 2, at the Assembly Hall. For Birch, in the twinkling of an eye, restores her in all her resplendent life and beauty.

Also included in the Birch performance are such bewildering illusions as the Vanishing Pony, in which a beautiful Shetland is caused to vanish while suspended in mid-air, the Challenge Packing Box escape in which Birch will attempt to escape from a strong box constructed by a local lumber company, the Beautiful Silk Mirage where yards and yards of gorgeous rainbow silk appears from nowhere, the Canary and the Mazda Lamp, in which a live canary is shot into a burning light bulb, and fifty other amazing illusions.

Miss Mabel Sperry, brilliant young xylophonist, is the assisting artist. A star of radio and concert fame, she brings you delightful melodies on her World's Fair Marimba, coming direct from the Century of Progress, Chicago.

Proceeds will go to the Y M C A and the swimming team who are sponsoring the entertainment.

Merka Third Scorer In S W Conference

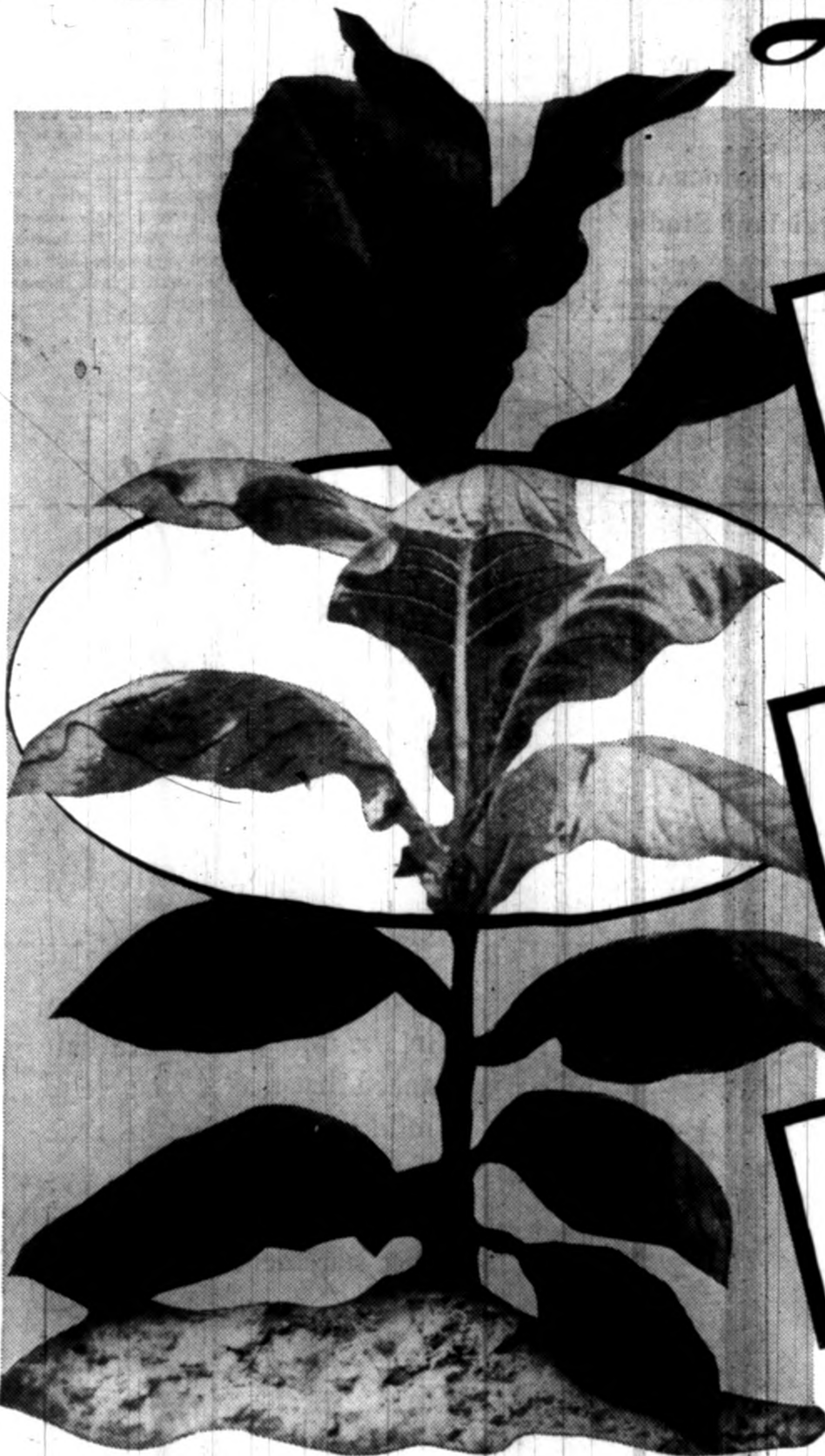
By making 20 points in the game with Baylor Saturday night, the indomitable Joe Merka, Captain and center of the Aggie basketball team, leaped into third place of the Conference individual scoring race. Merka, along with Jack Gray of Texas, and Allison of T C U, are the only scorers so far to break the 100 mark in points.

Gray, who led the scorers last year, now holds a six point lead over Allison, Texas Christian's prize goal chunker, and has two games with which to add to his total, while Allison has only one game left to play. The first five leading scorers are:

	p.	p.	p.	p.
Gray, f. Texas	10	51	40	142
Allison, f. TCU	11	49	37	135
Merka, c. A & M	10	39	27	105
Francis, c. Texas	10	36	22	94
arks, g. Baylor	11	28	34	9

ONLY THE CENTER LEAVES FOR

Luckies



1 Luckies do not use the top leaves ... because top leaves are underdeveloped ... they are not ripe ... They would give a harsh smoke.

2 Luckies use only the center leaves of the finest tobacco plants ... because the center leaves are the mildest, tenderest, smoothest.

3 Luckies do not use the bottom leaves, because bottom leaves are inferior in quality. They grow close to the ground, and are tough, coarse and always sandy.

This picture tells better than words the merit of your Lucky Strike. Luckies use only the center leaves. Not the top leaves, because those are underdeveloped—not ripe. Not the bottom leaves, because those are inferior in quality—they grow close to the ground and are tough, coarse and always sandy. The center leaves are the mildest leaves, the

finest in quality. These center leaves are cut into long, even strands and are fully packed into each and every Lucky—giving you a cigarette that is always round, firm, completely filled—no loose ends. Is it any wonder that Luckies are so truly mild and smooth? And in addition, you know, "It's toasted"—for throat protection, for finer taste.

Lucky Strike presents the Metropolitan Opera Company Saturday at 1:30 P. M., Eastern Standard Time, over Red and Blue Networks of NBC. Lucky Strike will broadcast the Metropolitan Opera Company of New York in the complete Opera, "Lulu" at Lammermoor.



NOT the top leaves—they're underdeveloped—they are harsh!

The Cream of the Crop "The mildest, smoothest tobacco"

NOT the bottom leaves—they're inferior in quality—coarse and always sandy!

Always the Finest Tobacco and only the Center Leaves

Copyright, 1934, The American Tobacco Company.

CANADY'S PHARMACY

Says Howdy To A and M's New Coaching Staff

GREETINGS AND BEST WISHES

To The Aggies' New Coaching Staff CAL AND HOMER

THE CAMPUS CLEANERS

Above the Exchange Store

"Shorty" Halbrooks

Joel English