

SHOW TALK

(By Fred L. Porter).

Raffles, with Ronald Coleman and Kay Francis, will be the feature of the Palace Theater three days, starting Thursday. Cliff Edwards with his ever present uke will appear in a short vaudeville act on this same program.

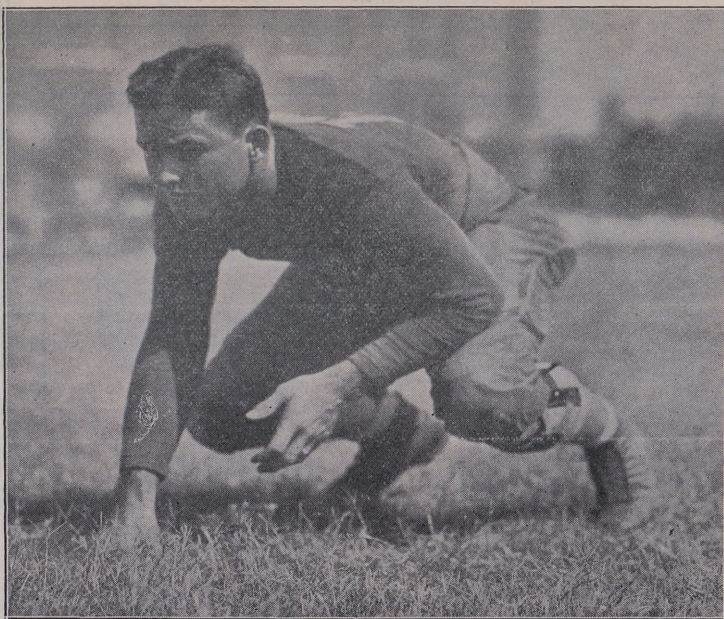
Gloria Swanson is the star of The Trespasser, the story of a woman who dwelt in the hearts of men who forgot their wives, coming to the Assembly Hall Saturday night.

The Palace preview Saturday night offers Edmund Lowe and Joan Bennett in Scotland Yard, a picture with a plot woven about the activities of that famous English detective agency. This picture will be the feature of the Palace program Monday.

Wednesday night the Assembly Hall show offers The Lady Lies with Walter Huston and Claudette Colbert.

Harold Bell Wright's Eyes of the World is the attraction offered by the Palace Tuesday and Wednesday.

Back In The Starting Lineup



Captain Bull Floyd, powerful fullback, whom Matty Bell has named to start against the Arkansas Porkers. Slowed by an injured knee, Floyd was held in reserve against the fleet T C U eleven last week.

53, seniors 373, juniors 495, sophomores 639, freshmen 856, special 14, non-collegiate two-year course in agriculture 4.

Students of electrical engineering outnumber those of all other courses, the figures announced show. There are 433 electrical engineering students enrolled, 175 of whom are freshmen. Agriculture is the next popular course with 323 students, followed closely by mechanical engineering with 305. Smallest enrollment in regular collegiate courses is shown in industrial education with five students. It is interesting to note that there are 59 liberal arts freshmen this year as compared with 26 seniors.

Purveyor Reported Better; At Home

Dean Charles E. Puryear, dean of the college and head of the department of mathematics, is reported to be showing improvement since being removed from the Bryan hospital to his home at College Station. Dean Puryear recently suffered an attack of paralysis.

Tuesday, October 21, the dean, who is the oldest member of the A & M faculty in point of service, was accorded a quiet party at his home to celebrate his seventieth birthday. Numerous friends and relatives visited his bedside to congratulate him.

Dean Puryear is a graduate of Richmond College, Richmond, Va., having received his M. A. degree there in 1881. He later attended the University of Virginia, receiving a degree in

TEXAS AGGIE FOOTBALL ROSTER, 1930

Head Coach—Madison Bell (Centre), end, 1916, 1917, 1918 and 1919.
Line Coach—J. G. (Klepto) Holmes, (A & M), guard, 1926 and 1927.
Assistant Coach—John Reid (Baylor), end, 1915 and 1916.
Freshman Coach—Roswell Higginbotham (A & M), half, 1919, 1920 and 1921.
Assistant Freshman Coach—Frank Anderson (Miss. College), half.
Freshman Line Coach—Dutch Dillingham (A & M), guard, 1916.
Freshman Line Coach—Walter Ewell (A & M), guard, 1927, 1928 and 1929.
Captain—Graceton Floyd, fullback, Rosewood.

No.	Player—	Age	Wt.	Ht.	Exp.
10	Stiteler, Harry, Smithville, back	20	137	5' 8"	B
11	Hewitt, W. W., Groesbeck, back	20	158	5' 10"	B
12	Shepherd, Frank, Houston, back	19	160	5' 11"	B
13	Webb, Lester, Flatonia, back	21	153	5' 8"	F
14	Bell, Luther, Harlingen, end	22	159	5' 10"	F
15	Graves, Henry, Corsicana, back	20	172	6'	B
16	Woodman, James, Austin, back	23	163	5' 8"	VS
17	Dansby, Horace, Bryan, back	20	165	5' 8"	VS
18	Davis, Walter, Fort Worth, back	21	170	5' 10"	VS
19	Christian, Jack, Abilene, guard	20	176	5' 11"	1-L
20	Lord, George, Jourdanon, guard	20	176	5' 11"	F
21	Mims, Percy, Fort Worth, end	21	175	6'	F
22	Harling, Bob, Houston, back	20	160	5' 10½"	F
23	Nolan, Willis, Santa Rosa, center	20	170	6'	VS
24	Sebesta, Albert, Marlin, back	21	165	5' 6"	VS
25	McFadden, Paul, Cleburne, end	21	175	6'	VS
26	Woodland, Sully, Cordele, back	19	166	5' 7"	F
27	Anderson, C. H. C., Dallas, center	22	164	5' 10"	VS
28	Tracy, Adrian, Houston, end	22	175	5' 11"	2-L
29	Weller, W. O., Brownsville, back	19	167	5' 9"	F
30	Aston, Jimmie, Farmersville, back	18	180	6'	VS
31	Golasinski, A. A., Houston, guard	20	182	5' 8"	F
32	Scheer, Bob, Marshall, end	19	178	6'	VS
33	Wolf, William, Corpus Christi, back	20	170	5' 10"	F
34	Zumwalt, Robert, Shreveport, La., back	18	172	5' 11"	F
35	Phillips, Harry, McKinney, back	23	180	6' 1"	VS
36	Guseman, Oliver, Houston, guard	20	180	5' 8½"	VS
37	Moore, Alvan, Itasca, guard	23	165	5' 4½"	VS
38	Floyd, Graceton, Rosewood, back	22	172	5' 8"	2-L
39	Emmons, Walter, Plainview, end	21	173	6' ½"	VS
40	Piller, D. M., Mineola, center	22	175	6'	F
41	Hill, Tom, Waco, tackle	22	188	6' 2"	VS
42	Hornsby, Harold, Austin, guard	22	180	5' 11"	VS
43	Abbey, Dan, Del Rio, center	20	201	6'	1-L
44	Moulden, Carl, Cisco, tackle	23	176	6'	1-L
45	Magrill, Byrom, Marshall, tackle	22	187	5' 10½"	1-L
46	Thompson, Homer, Vernon, tackle	22	175	5' 11"	B
47	Malone, Charlie, Dallas, end	20	195	6' 3½"	F
48	Van Zandt, Roscoe, Fort Worth, guard	19	200	5' 11½"	1-L
49	Dawson, Oran, Crockett, tackle	22	220	6' 4½"	VS
	Breedlove, M., Smithville, guard	20	180	5' 11½"	F
	Bucknan, Bob, Fort Worth, back	21	185	6'	B
	Elder, R. M., Karnes City, back	23	170	5' 9"	F
	Flournoy, C. H., Jasper, back	20	170	5' 10"	B
	Fischer, Harry, Houston, tackle	23	192	6' 1½"	VS
	Jennings, Audrey, Sanatorium, tackle	21	186	5' 10½"	B
	Kenderdine, John, Fort Worth, end	18	170	6' 3"	B
	Love, Joe, Sherman, center	18	155	5' 9"	F
	O'Dowd, Bill, Cleburne, end	22	155	5' 8"	VS
	Sulak, Bernard, West, guard	20	172	5' 10"	B
	Wareing, Leslie, Corsicana, tackle	22	175	5' 11½"	F
	Wright, R. H., Alice, end	19	156	5' 8½"	F

VL—Letter on varsity team.
F—Freshman team numeral.
VS—Varsity squad (no letter)

B—Intramural football, organized after Thanksgiving, composed of players who did not make the varsity or freshman teams.

civil engineering there in 1885, and he holds a LL. D from Daniel Baker College.

Mayo To Speak At Seminar Mon.

Thomas F. Mayo, librarian of the college, will address the Social Science Seminar in the Physics auditorium Monday night, October 27, at eight o'clock. Professor Mayo's subject will be "What is an Education", or "Pseudo-Philosophical Impertinence."

At the University of Mississippi, at Columbia University, and at Oxford, Professor Mayo studied the motives and attitudes of the students

who really wanted to educate themselves, and with these observations at hand, should be able to deliver one of the most interesting lectures scheduled for the college year.



Sheep lined Coats
\$7.95

All Leather Horse
Hide Coats—\$7.98

Montgomery Ward

Wm. B. Cline, M. D.

EYE, EAR, NOSE & THROAT

Refraction and Glasses

Phone 606 Res. 622

Office over Jenkins

Drug Store

Bryan, Texas

THE AGGIELAND BARBER SHOP

VISIT US

GET THAT CLEAN SNAPPY APPEARANCE WITH A FRESH HAIRCUT

NEXT TO AGGIELAND PHARMACY

R. W. IVEY, PROP.

CHIROPRACTIC

DR. F. S. WILLETS, GRADUATE CHIROPRACTOR

PALMER METHOD

BRYAN, TEXAS

ANALYSIS FREE — RATES FOR STUDENTS

OFFICE HOURS 1 TO 6 P. M.

SANDWICHES OF ALL KINDS — CHILE — HOT AND COLD DRINKS

POWERS

CONFECTIONERY

Across from Palace

INSURANCE OLD LINE LEGAL RESERVE

S. D. SNYDER

Phone 509 F 2

Box 1155

College Station, Texas

READY FOR THE Arkansas Game?

Boys let us dress you for that great game!

Fresh new shipments of gabardine, serge, wool, and broadcloth shirts.

Serge Breeches and Slacks. Packard's New Calf dress shoes \$8.50

Texas Aggie Specials \$6.50 and \$5.95

New! New Variety Fish Brand Slicker \$5.50

New Sweaters, Sox, Shirts, Ties, House-Slippers, Bath Robes, Dunlap Hats

W. F. Gibbs & Son
PACKARD OXFORDS

The Greater Palace

THURSDAY — FRIDAY — SATURDAY



RONALD COLMAN in RAFFLES

Presented by SAMUEL GOLDWYN

United Artists Picture

KNUTE ROCKNE FOOTBALL NEWS (UKELELE IKE) VAUDVILLE ACT FOX NEWS



PREVIEW 11 P. M. SATURDAY
EDMUND LOWE IN "SCOTLAND YARDS"
WILL ALSO SHOW MONDAY ONLY