

SEABURY CLASSES KINDS OF LOVE

The seven kinds of marital love, according to David Seabury, psychologist and author, are, in the order of their ability to make married life happy:

Mate Love, founded on natural

compatibility.

Romantic Love, that is in love with love.

Sex Love, based on physical attraction.

Home Love, based on the universal longing for a retreat.

Intellectual Love, founded on mental attraction.

Propinquity Love, which develops from having the same social background.

Virginia to use Traveling Schools

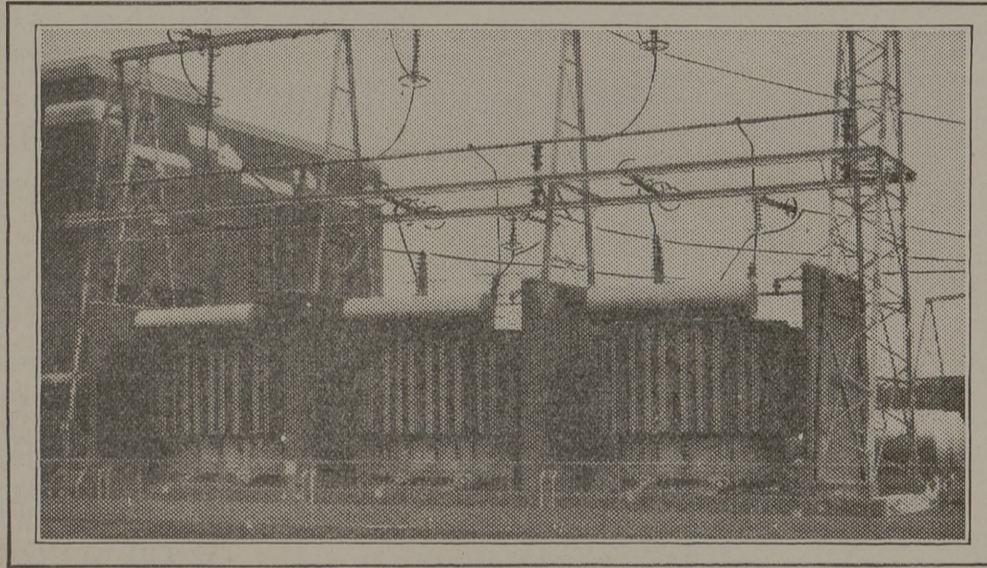
Richmond, Va.—The Virginia department of education is considering the use of schools on wheels, equipped with blackboards, desks and other necessities, to be taken into the isolated and sparsely settled moun-

tain districts of the state.

Morris Hart, state superintendent of schools, says the teacher could easily learn to drive the bus. In this way it could serve one community in the morning and another in the afternoon.

Plans considered would include in the equipment a small traveling library, adequate heat, drinking water and a first aid kit.

WHAT YOUNGER COLLEGE MEN ARE DOING WITH WESTINGHOUSE



Special cars were needed . . .
*railway tracks had to be lowered, to handle
the transformers these men built*

AT Conowingo, Maryland, is the second largest hydro-electric development in the world. Power generated there at 220,000 volts will be fed into lower voltage transmission lines of the Public Service Electric and Gas Company at Roseland, near Newark, New Jersey.

The transformers that will perform this transfer of energy are physically the largest ever built, for their capacity is sufficient to serve the home lighting needs of a city of a million people. Four in number, each is larger than a house, weighs when empty as much as a large locomotive and holds three

tank cars of oil. Four specially built railway cars and fifty-two standard cars of various types were required to transport them from the factory to the job. At one point the railway tracks had to be lowered so the units would clear an overhead viaduct, so great was their size.

When spectacular jobs like this come up, it is natural that they go to an institution like Westinghouse. Pioneers in electrical development, Westinghouse engineers often know the thrill of achieving the "impossible" in seeing their work through from design to erection.

Westinghouse



E. W. TIPTON
University of Kansas, '25
Development of Commercial
Design



R. L. BROWN
Ohio State University, '22
Tap Changer Development



EMIL STEINERT
University of Minnesota, '25
Electrical Designer



A. C. STAMBAUGH
University of Pittsburgh, '24
Engineer of Tests



H. H. WAGNER
University of Illinois, '27
Designing Engineer