

M. E. Department Under Progression

"A greater A. and M. of Texas that is the conscientious slogan of every member of the educational outlay in this: our Agricultural and Mechanical College.

The legislature approved an estimate for \$4,000 to do necessary work to improve the practice courses of the M. E. department and we find that only \$5,500 of the \$4,000 was used.

In the building itself we find considerable changes, the foundry

having been moved from the north east wing of the M. E. shops to the middle wing along with the elevator where a new charging platform was added to a reconditioned cupola. The pattern shop was merged with the wood working shop thus allowing room for the steam laboratory equipment which now occupies this room, the basement compartment immediately beneath, and the old foundry room, the floor of the latter being covered with concrete which serves as a base for equipment. The heating system of the entire building was given a complete overhauling.

Dr. Hedges and his staff of ion chasers are occupying the rooms west of the main corridor waiting restlessly until our new chemistry building is a realization.

Our equipment additions, including about \$1300 of new material consists of 2 centrifugal pumps driven by G. E. motors, a one-half ton automatic self contained refrigerating unit, a Tips single cycle vertical Diesel engine donated by the Tips Engineering Company of Austin, Texas, a 25 H. P. horizontal Diesel formerly used by the Texas Power and Light at Crum, Texas, a small single spindle shaper, and a small Porter-Cable belt sander.

These changes, the moving cost-

ing about \$4,000 and the remodeling costs aggregating some \$1,500 necessarily followed the revolutionary changes in the third and fourth year M. E. course schedule which was suggested by the previous M. E. Department head and capably managed by the present one.

SAY "BO" DIDJA

Say "Bo" didja ever get so cynical,
 And have such a pessimistic view on life,
 And say that you weren't ever going To fall in love with any girl,
 And that you were a "woman hater,"
 But, say "Bo" didja ever have a real Sweet Thing from Texas come down For the first corps dance,
 And you have that date with her
 And take her to Bryan
 For those famous fried chicken legs
 And "crooked finger practice" on

tea cups,
 And shine your boots twice and put
 On cosmetics to show her that
 You are the type the movies are looking for;
 And say "Bo" didja ever feel that
 You were a fool to have such a Pessimistic view on "women"
 And then tell yourself that you were
 Going to turn a new leaf
 And then fall in love, yes LOVE
 With that Texas girlie
 So that you sit and dream of her
 Day in and night out,
 Neglect your studies to
 Picture HER in your visions?
 Say "Bo" didja? Well,
 JODY MILLER did.

La Salle Hotel

Modern Fire Proof
 100 Rooms 100 Baths

La Salle Restaurant and Coffee Shop

Bryan's Finest Eating Place

THEM GOOD MALTEDS
 WE STILL MAKE 'EM

Cadets and Campus People invited to call.

King's, Whitman's and Pangburn's Candies.

Holmes Brothers

Confectionery

Campus Shoe Shop

Serving A. & M.
 Since "81"

Dr. Lamar Jones

Dentist

X-RAY

Second Floor City National Bank Building
 Telephones

Office 698 Res. 464

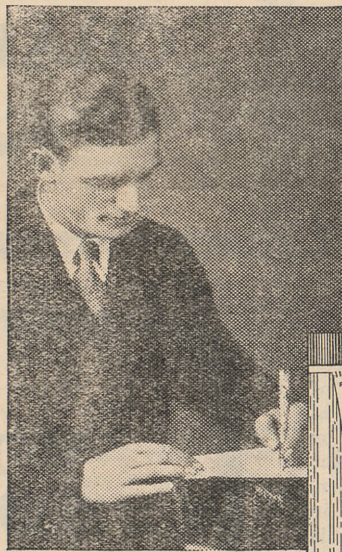
Bryan, Texas

FOR

RED HOT HAMBURGERS
 AND COLD DRINKS

Andrews Place

BACK OF LEGGETT HALL



Non-stop line plunges won an All-American berth for "Biff" Hoffman of Stanford University. When it comes to non-stop writing, "Biff" depends on a Parker Duofold.

To prove Parker Duofold is a pen of lifelong perfection, we offer to make good any defect, provided complete pen is sent by the owner direct to the factory with 10c for return postage and insurance.

For Non-Stop Writing

These All-American Football Stars,
 Like All Real Fellows,
 Depend on Parker Pressureless Touch

Non-Breakable Barrels—24%
 Greater Ink Capacity—*Guaranteed Forever Against All Defects

Hitch your writing to the star of all pens if you want to be in the same class with the Big Fellows who star in every line of endeavor.

There's never been another so handsome to carry as black-tipped Parker Duofold—never another so shapely to hold—and none with our 47th Improvement—Pressureless Touch.

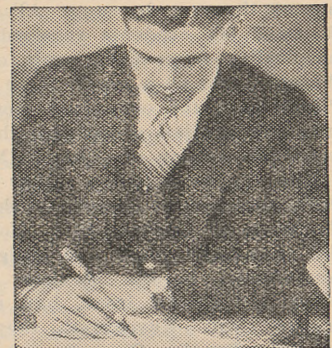
It adjusts its flow to the speed of your hand by easing your stroke. It sweeps pen worries out of your mind, so your brain has a clear track for thinking.

Do you know that by actual count Parker's Pressureless Writing now rules throughout America?

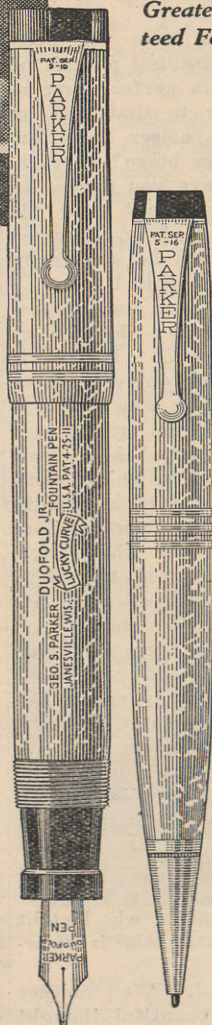
A census of pens in 13 technical schools disclosed that Parker leads in popularity 2 to 1. It was voted the favorite by students in 55 colleges. And a nation-wide poll conducted by the Library Bureau proved Parker the preference by 25% above the second pen, and 48% above the third.

Stop to any good pen counter and select your point. Imitations can't deceive you if you look for the imprint, "Geo. S. Parker—DUOFOLD."

THE PARKER PEN COMPANY, Janesville, Wis. Offices and Subsidiaries: New York, Chicago, Atlanta, Buffalo, Dallas, San Francisco.



The headwork which made Howard Harpster of Carnegie Tech, All-American Quarterback isn't confined to football. He uses good judgment in the classroom too, writes—via Parker Pressureless Touch.



Pens to match \$3 to \$5

Parker

Duofold \$5-\$7-\$10