

room be provided for each dormitory; the room to be furnished with upholstered furniture and other fittings suitable for a club room.

2. It is suggested that a caretaker be placed in charge of each dormitory, charged with maintaining it in a clean and sanitary condition.

3. It is suggested that the jani-

tor force be increased and that the rooms be swept daily and the halls twice daily by competent men under the close supervision of the caretaker.

4. It is suggested that the rooms be checked in and out by the caretaker and no person be allowed to occupy them without provisions first

being made to insure payment for any damage that might be done by them.

A reasonable careful estimate of the costs of these improvements has been made and it is believed that all of the provisions and suggestions contained in this petition can be effected without increasing the main-

tenance fee more than twelve dollars and fifty cents per term. The students desire these changes and believe they will be of advantage in making the school a better one than it now is. It is hoped that the authorities execute the provisions contained in the plan as soon as possible.



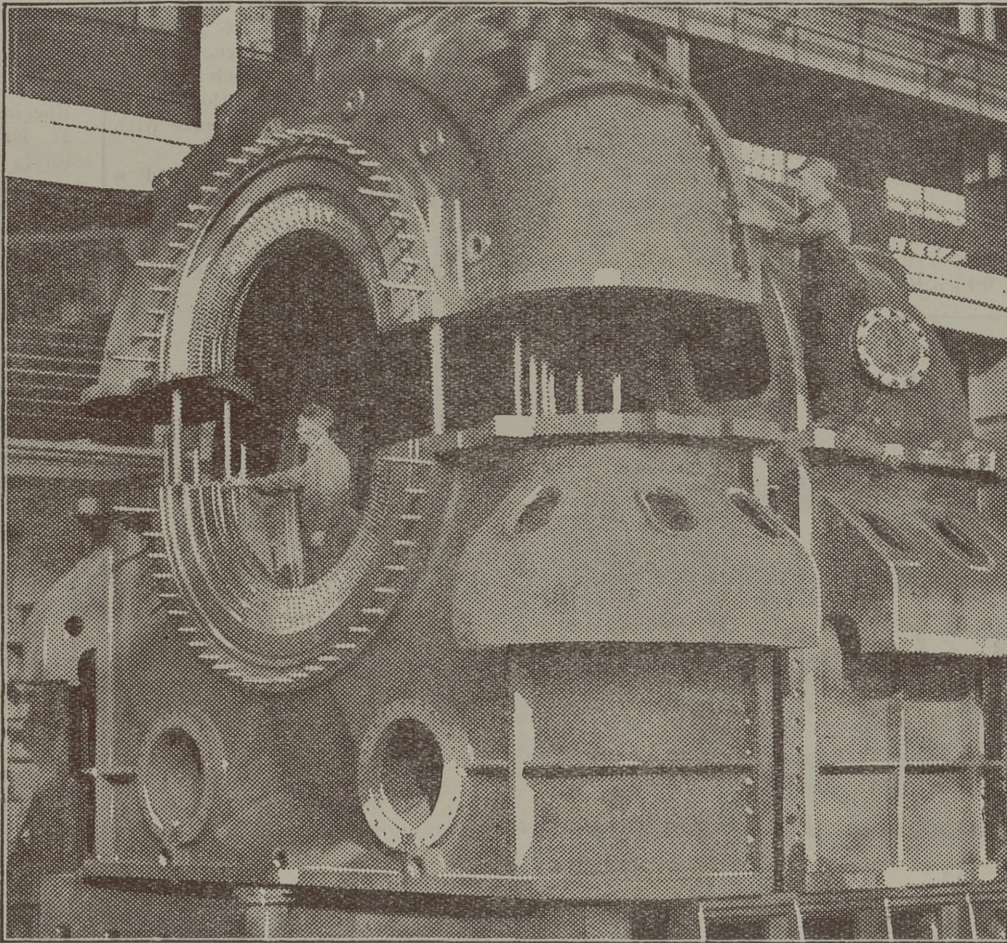
P. G. ROBERTS,  
Production Engineer,  
Penn State, '25



C. W. GUTH,  
Mechanical Engineer,  
Colorado School of  
Mines, '22



ROBT. REYNOLDS,  
Turbine Engineering,  
Pratt Institute, '20



## YOUNGER COLLEGE MEN ON RECENT WESTINGHOUSE JOBS



E. F. STALCUP,  
Headquarters Sales,  
Kansas State, '21



C. E. WARE,  
Contract  
Administration,  
Penn State, '17



H. B. MAYNARD,  
Manufacturing  
Operations,  
Cornell, '23

## The Duke Power Company Turbine-Generators

*Where do young college men get in a large industrial organization? Have they opportunity to exercise creative talent? Is individual work recognized?*

THE largest steam-turbine generator units to be installed south of the Mason-Dixon line are now being built for one of the most unusual organizations of its kind in the world. The Duke Power Company is famous for the efficiency of its power plants—and for the fact that its operating profits are distributed largely to charity.

At a horseshoe bend in the Catawba River in the heart of the Piedmont Carolinas the Duke Power Company is building a generating plant which, if present plans are carried out, will be the largest of its kind in the southeastern United States. The ultimate capacity will probably be 600,000 horsepower. The first two units, which Westinghouse is now building, each are to have a generating capacity of 55,000

kilowatts. They will develop 150,000 horsepower.

By operating at practically full capacity during the entire 24 hours of the day, letting the company's hydro-electric plants handle variations in the quantity of power required, the new units will furnish the means to reduce current costs to a minimum.

The large jobs go to large organizations. Westinghouse holds a strong appeal for young men of enterprise and genius because it almost daily

provides contacts with outstanding developments in the electrical field.

# Westinghouse

