

AGGIES WIN FIRST CONFERENCE BATTLE

(Continued from Page 8)

L. E.	Winters
Lister	L. T.
Holmes	Wren
L. G.	Coleman
Bartlett	C.
Figari	Van Sickle
R. G.	Crabaugh
Sprott	R. G.
Petty	Rose
R. E.	Geise
Hunt	Q.
Burgess	Donathan
L. H.	Cole
Mills	R. H.
Varnell	Beavers
F. B.	

Referee, Rix; Umpire, Kenney; Headlinesman, Viner; Field Judge, Braun.

DROP KICKS

(Continued from page 8)

season. But don't take them too seriously; they don't know any more about our team than anyone else. There is no team that cannot be beaten but if a good team has the proper support it can make it mighty hard for any other team to outplay them.

The Aggie team this year is a fighting team, and with a determined cadet corps behind it the other teams in the conference are in for a hard time when they play A. & M.

Let's go Frog-gigging.

TICKETS FOR THANKSGIVING GAME

(Continued from Page 8)

No. 5 for their individual ticket on a date about a week before the game, the exact date will be announced in The Daily Bulletin. Students desiring to purchase tickets for friends and relatives will make request in writing and mail same to Mr. Sullivan enclosing check to cover cost of tickets, which will be \$2.50 each.

The University of Texas gets half of the 15,000 seats on the east side and this leaves 7,500 for distribution. The corps will get 2,500 of these and the rest are to be divided among the Former Students and Faculty. This, Mr. Sullivan points out, leaves only a few seats on the side and the end sections to be distributed among the general public but, as the sections are to be built high, there will be good seats in these sections and students will get choice of them.

DO NOT WAIT TOO LONG getting in your reservation for tickets as you may not get a desirable seat. The ticket sale for Former Students who are not members of the Former Students' Association and the general public will open Nov. 1. Applications received prior to 5 p. m. Monday, October 31, 1927, will be filed as of November 5.

CONFERENCE STANDING.

Team	P	W	L	Pct.
A. & M.	1	1	0	1000
S. M. U.	1	0	0	1000
Arkansas	2	1	1	500
T. C. U.	1	1/2	1/2	500
Texas U.	1	1/2	1/2	500
Rice	1	0	1	000
Baylor	1	0	1	000

ON COOL AIRISH DAYS

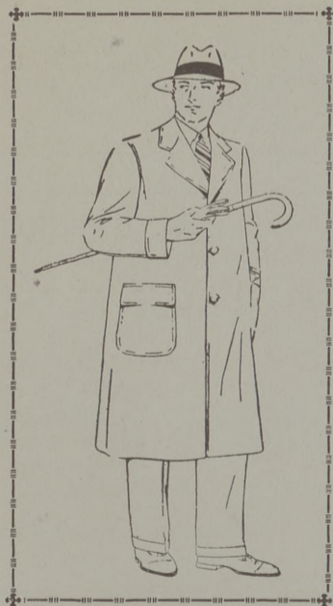
We would suggest hot tamales with chili gravy, saltines, and hot coffee

SERVED ONLY AT

CASEY'S

IN THE "Y"

Coats Coats Coats



- Slickers
- Suede Coats
- Gaberdines
- Sheep Lined
- Rubber Coats
- Top Coats
- Over Coats
- Leather Coats

THE LARGEST STOCK AND THE LOWEST PRICES IN BRYAN

A. M. WALDROP & CO.

TWO CONVENIENT STORES

BRYAN AND COLLEGE

STOP!

Have you protected that loan with a Life Insurance Policy? Rotary clubs require it. Protect your loan the same way.



S. D. ("SI") SNYDER, The INSURANCE MAN

Offers you this protection through the UNION CENTRAL LIFE, a low net cost company.

P. O. BOX 1555

COLLEGE STATION, TEXAS

PHONE 509F2

Old Lady: "Son can you direct me to the People's Saving Bank?"

Boy: "Yessum, for a quarter."

Old Lady: "Isn't that a mighty high pay, my boy?"

Boy: "No, ma'am, not for a bank director."

Who said: "Man proposes, God disposes, woman exposes?"

Bore: "Haven't I met you some place before?"

Bored: "Possibly; sometimes I get a little careless where I go."