

Storms halt flight

Columbia grounded

United Press International
EL PASO — The often delayed flight of the space shuttle Columbia, weather-sensitive because of temporary tiling installed to protect its aluminum skin, was postponed again Wednesday due to a spring storm centered over south Texas.

Weather permitting, Air Force spokesman Harry Nixon said the shuttle — bolted atop a 747 jumbo jet — would take off from Biggs Army Air Field at 9 a.m. today and arrive 90 minutes later at Kelly Air Force Base in San Antonio on the

first leg of an all day flight to Cape Canaveral, Fla.

The shuttle was to have departed El Paso Wednesday for Kelly AFB, but thunderstorms continued between west Texas and Florida, the shuttle's final destination, and a T-38 jet trainer dispatched from El Paso to San Antonio indicated there was no chance of clearing.

Astronaut Deke Slayton, in charge of ferrying the Columbia from Edwards AFB, Calif., to the Kennedy Spaceflight Center, then ordered the grounding, the fifth in the last 12 days.

It was the torrential rains in south Texas that caused NASA officials, fearing wetness might damage the temporary tiling, to order the shuttle to land at Biggs Air Field, adjacent to the much larger Fort Bliss, Tuesday with only 20 minutes notice to Biggs officials.

However, when technicians inspected temporary plastic tiles bonded to the aluminum skin of the spacecraft after its first test flight, they discovered some of the tiles had blown off.

The shuttle will have 34,000 black and white tiles attached to its skin when it is launched to protect it from the tremendous temperatures of re-entry. But it still lacks 7,000 of the permanent tiles and the plastic dummies were put on to preserve its aerodynamic lines in flight.

The latest flight plan alteration has called for only a two hour refueling stop at San Antonio instead of an originally planned overnight stay, followed by a direct flight to Cape Canaveral, Fla., bypassing a previously scheduled stop at Eglin Air Force Base, Fla.

Snake bit you? Here's what to do

By RICHARD OLIVER
Battalion Reporter

Don't look now, but next to your right foot is a five-foot rattlesnake, and it just bit you. What do you do? The first thing to do is to find some medical attention, according to Dr. Thomas Glass, clinical surgeon at the University of Texas Medical Branch in San Antonio.

Glass spoke Wednesday night on the treatment of snakebites, sponsored by the Health Education section of the Department of Health and Physical Education.

"It's not hard to get medical care," Glass said. "The earlier you get to medical attention the less damage will occur."

Glass is adamantly against the crosscutting and mouth suction methods of snakebite treatments.

"It's important to keep the wound clean," he said.

"By putting your dirty mouth on a snakebite, you increase the chances of infection many times over."

"Cross-cutting is a dangerous and ineffective way to stop the spread of the venom. A person can never be sure how deep the venom has been injected, and it is often impossible to determine how deep to cut."

"Also, 20 to 25 percent of all snakebites have no venom, making the cross-cut unnecessary."

Glass believes applying tourniquets and ice packs to a snakebite are the safest and most effective way to neutralize the spread of the venom.

"I have been cussed and discussed over my views in this area," he said "but most arguments against these methods are absurd. Both the ice pack and the tourniquet will restrict the movement of the venom and save many areas of muscle tissue which would otherwise be injected and destroyed by the venom."

Glass said tourniquets should be placed close on both sides of the bite to restrict venom movement in either direction.

"Shoelaces, strings, rubber bands or anything will do," he said. "Don't worry about the width of the tourniquet or cutting off your circulation. It's almost impossible to cut off all circulation with the tourniquet."

Glass said of the three pit vipers — rattlesnakes, copperheads and water moccasins — the rattlesnake causes the most deaths.

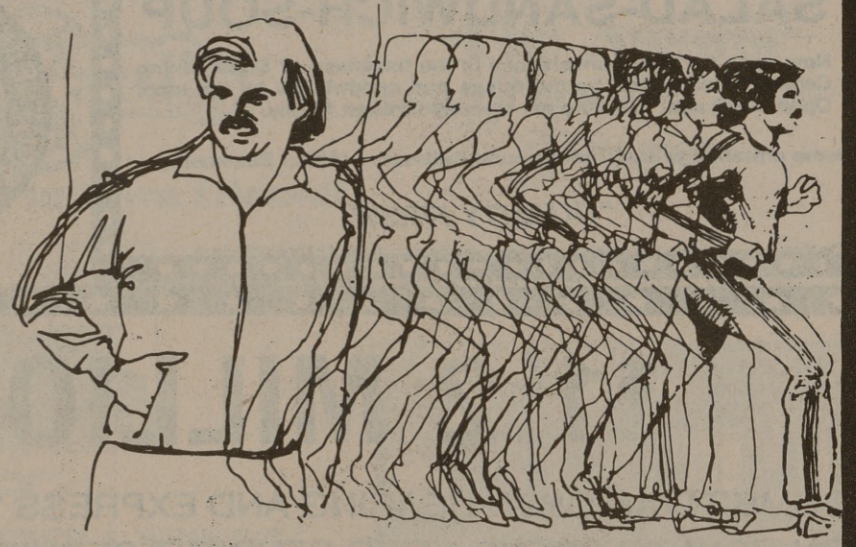
"From one to seven people die each year from the rattlesnake bite," he said. "Usually no one dies from the bite of a water moccasin or copperhead."

Some 1933 stamps worth \$2,500 now

United Press International
NEW YORK — A two dollar investment in a souvenir sheet of stamps 45 years ago is worth \$2,500 today, according to Alain de Cadenet, a collector and consultant to the British Post Office. The sheets were issued by Austria in 1933.

Norway will mark the 125th anniversary of the first Norwegian stamp by issuing souvenir sheets in conjunction with NORWEX 80, an international stamp exhibition scheduled in Oslo June 13-22, 1980, de Cadenet said.

The British Post Office also will be offering special souvenir sheets on Aug. 22, 1979, in honor of the 100th anniversary of the death of Rowland Hill, who introduced the world's first adhesive postage stamp.



ENTIRE STOCK OF WARMUPS 40% off

EXCLUDING ADIDAS
Wilson and Dunlop championship

tennis balls reg. 2⁸⁵ NOW 1⁵⁰

(limit 2)

NIKE WAFFLE TRAINER reg. 29⁹⁵ NOW 24⁹⁵

NIKE Astro-Grabber Softball Shoe reg. 33⁹⁵ NOW 28⁹⁵

Woodstone Commerce Center

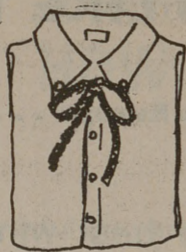
907 Harvey Rd. (Hwy. 30)



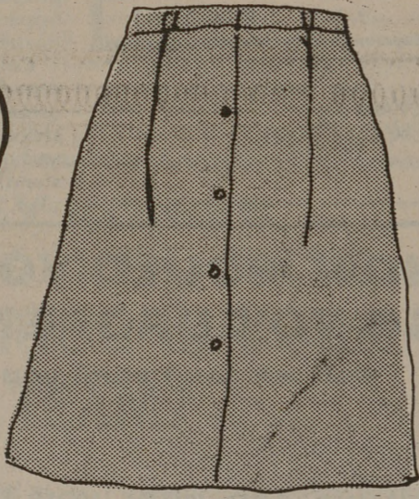
GANT FOR HER



GANT BLAZER
\$78
Khaki and Navy
Sizes 4-14



OXFORD CLOTH
Button down shirts \$25
ties \$5 and \$6



GANT SKIRTS
\$38
Khaki and Navy
Sizes 4-14

MSC Cafeteria

Now Better Than Ever. You Will Be Pleased With These Carefully Prepared and Taste Tempting Foods. Each Daily Special Only \$1.79 Plus Tax. "Open Daily" Dining: 11 A.M. to 1:30 P.M. — 4:00 P.M. to 7:00 P.M.

MONDAY EVENING SPECIAL
Salisbury Steak with Mushroom Gravy Whipped Potatoes Your Choice of One Vegetable Roll or Corn Bread and Butter Coffee or Tea

TUESDAY EVENING SPECIAL
Mexican Fiesta Dinner Two Cheese and Onion Enchiladas w/chili Mexican Rice Patio Style Pinto Beans Tostadas Coffee or Tea One Corn Bread and Butter

WEDNESDAY EVENING SPECIAL
Chicken Fried Steak w/cream Gravy Whipped Potatoes and Choice of one other Vegetable Roll or Corn Bread and Butter Coffee or Tea

THURSDAY EVENING SPECIAL
Italian Candle Light Spaghetti Dinner SERVED WITH SPICED MEAT BALLS AND SAUCE Parmesan Cheese - Tossed Green Salad Choice of Salad Dressing - Hot Garlic Bread Tea or Coffee

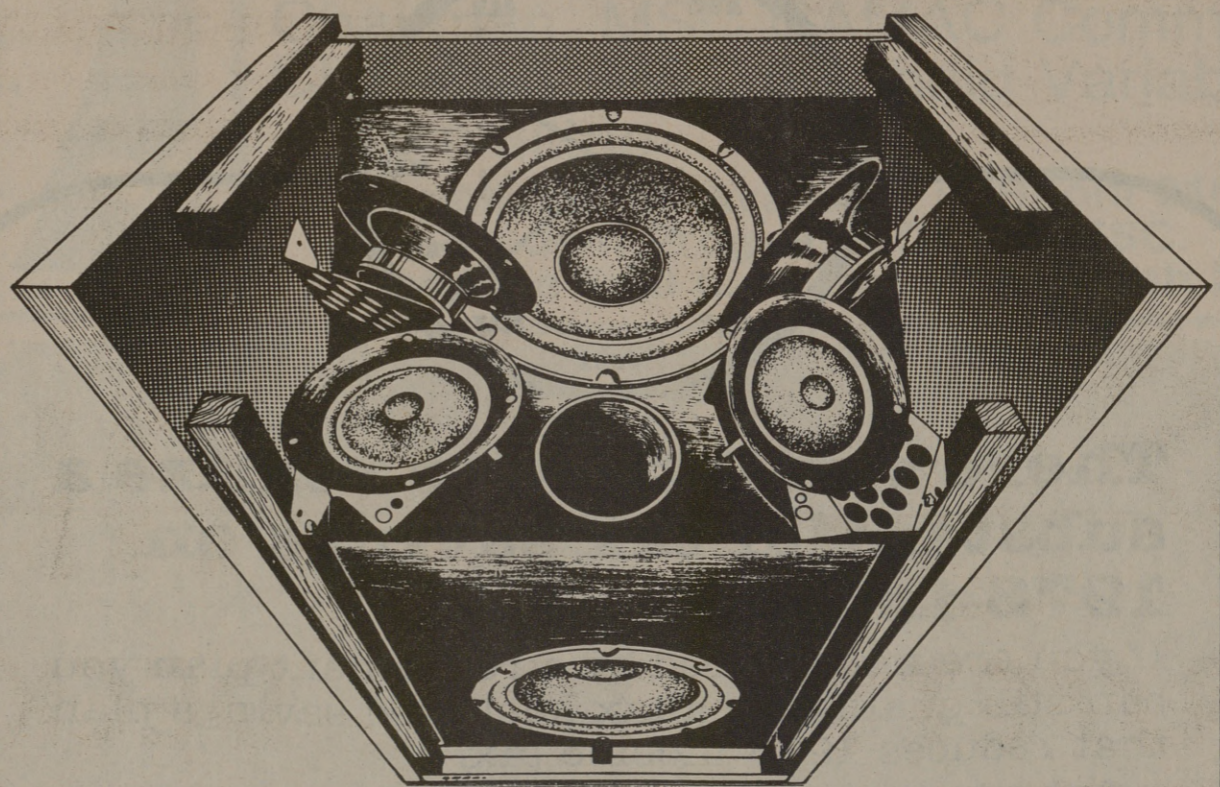
FRIDAY EVENING SPECIAL
BREADED FISH FILET w/TARTAR SAUCE Cole Slaw Hush Puppies Choice of one vegetable Roll or Corn Bread & Butter Tea or Coffee

SATURDAY NOON and EVENING SPECIAL
Chicken & Dumplings Tossed Salad Choice of one vegetable Roll or Corn Bread & Butter Tea or Coffee

SUNDAY SPECIAL NOON and EVENING
ROAST TURKEY DINNER Served with Cranberry Sauce Cornbread Dressing Roll or Corn Bread - Butter - Coffee or Tea Giblet Gravy And your choice of any One vegetable

"Quality First"

Introducing The Bose Model 601.



The new Model 601 loud-speaker from Bose looks, works and sounds very different from any conventional floor-standing speaker.

Like the world-renowned Bose 901* Series III, the Model 601 is a Direct/Reflecting* speaker, designed to recreate the impact and presence of a live performance with a quality of realism that no conventional speaker can match.

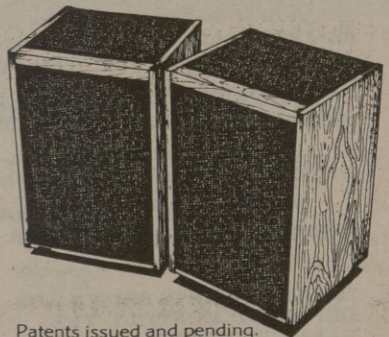
The Model 601's unique configuration of six drivers—four tweeters and two woofers—spreads a

balance of reflected and direct sound to every corner of the room.

From virtually any listening position, the sound is open and spacious, full of the feel and ambience of a live performance, and with none of the harshness so characteristic of conventional high-fidelity speakers.

The Model 601 is also highly efficient (minimizing amplifier power and expense) and exceptionally versatile (allowing superior performance in a wide range of speaker positions). For a more complete

introduction to the Model 601, come in for a live demonstration.



Patents issued and pending. Cabinets are walnut veneer.

BOSE
Better sound through research.

AUDIOVIDEO

707 Texas Ave. in College Station

696-5719

Financing Available