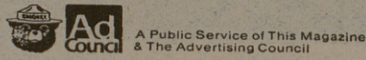


**Thanks to you, I still have a home.**



For over 30 years, Smokey has been asking you to be careful with fire. During that time, you've helped cut the number of careless fires in half. So from Smokey Bear and all of us who live in the forest, thanks for listening. And keep up the good work.



# Cattle 'shipping fever' to be studied at A&M

By LORI MAYER  
Battalion Reporter

The U.S. Secretary of Agriculture has approved a \$65,260 grant for a study to be conducted by Texas A&M University on shipping diseases in cattle, says Bill Presnal, House Appropriations Committee chairman.

Secretary Bob Bergland approved the grant for testing by Texas A&M of a new self-contained cattle car

that can transport cattle long distances by rail, Presnal said.

The car, which will be 85 feet long, will have two decks, says Dr. Mike Irwin, the primary researcher for the project.

Water troughs will be located in the center of each deck that will enable two of the cattle to drink at a time on each deck. The cattle will have more room to move around than in the trailer trucks that transport them now, Irwin said. This new cattle car will help increase their resistance to "shipping fever," a major cause of cattle deaths in the United States.

Shipping fever is caused by the crowded conditions in trucks, which carry young cattle that have just been weaned and are on their way to the stockyards or pastures. These calves undergo great stress in the weaning process, and in the crowded trailers that stress is multiplied, says Mary Mahoney, the assistant editor for the Department of Agricultural Communications at the University. This leaves the calves susceptible to several respiratory diseases, among them pneumonia, she said.

This project is being funded

through the federal-state marketing improvement program which is being administered by the United States Department of Agriculture Agricultural Marketing Service (AMS). Under this program, states may request federal funds and, after approval, match them with at least an equal amount of state's money.

If shipping fever could be reduced, the result could be a large saving in the cost of moving cattle. Shipping fever now costs the United States \$1.5 billion per year, Irwin said. This loss includes the cost of vaccines and treatments of the fever. It also includes the loss of production caused by the fever.

"We don't expect the railroads to take the place of trucking as a number one means of moving Texas livestock. However, the improved cattle car could lead to increased rail shipments," Presnal said.

The cattle car that will be tested by Texas A&M will be for movement between Texas and Tennessee. If this first stage of the project is successful, movement over a large area of the United States is planned.

The research will be conducted in Amarillo at the Texas Agricultural Experiment Station's Agricultural Research and Extension Center.

## SKI LAKE TAHOE

TEXAS A&M  
SNOW SKI CLUB

MARCH 11 - MARCH 17

**\$299<sup>00</sup> INCLUDES:**

AIR TRANSPORTATION  
CAR WHILE IN LAKE TAHOE  
CONDOMINIUM LODGING WITH COOKING FACILITIES  
5 FULL DAYS OF SKIING  
3 DAY LIFT TICKET

SIGN UP IN ROOM 216 M.S.C.

MONDAY THROUGH FRIDAY 1:00 - 2:00 p.m.

**\$50<sup>00</sup> DEPOSIT REQUIRED**



Now Better Than Ever. You Will Be Pleased With These Carefully Prepared and Taste Tempting Foods. Each Daily Special Only \$1.79 Plus Tax. "Open Daily"

Dining: 11 A.M. to 1:30 P.M. — 4:00 P.M. to 7:00 P.M.

### MONDAY EVENING SPECIAL

Salisbury Steak with Mushroom Gravy Whipped Potatoes Your Choice of One Vegetable Roll or Corn Bread and Butter Coffee or Tea

### TUESDAY EVENING SPECIAL

Mexican Fiesta Dinner Two Cheese and Onion Enchiladas w/chili Mexican Rice Patio Style Pinto Beans Tostadas Coffee or Tea One Corn Bread and Butter

### WEDNESDAY EVENING SPECIAL

Chicken Fried Steak w/cream Gravy Whipped Potatoes and Choice of one other Vegetable Roll or Corn Bread and Butter Coffee or Tea

### THURSDAY EVENING SPECIAL

Italian Candle Light Spaghetti Dinner SERVED WITH SPICED MEAT BALLS AND SAUCE Parmesan Cheese - Tossed Green Salad Choice of Salad Dressing - Hot Garlic Bread Tea or Coffee

### FRIDAY EVENING SPECIAL

BREADED FISH FILET w/TARTAR SAUCE Cole Slaw Hush Puppies Choice of one vegetable Roll or Corn Bread & Butter Tea or Coffee

### SATURDAY NOON and EVENING SPECIAL

Chicken & Dumplings Tossed Salad Choice of one vegetable Roll or Corn Bread & Butter Tea or Coffee

### SUNDAY SPECIAL NOON and EVENING

ROAST TURKEY DINNER Served with Cranberry Sauce Cornbread Dressing Roll or Corn Bread - Butter - Coffee or Tea Giblet Gravy And your choice of any One vegetable

"Quality First"



Keep Red Cross ready.

## MSC TRAVEL

**WANT TO STUDY OVERSEAS? NEED FINANCIAL HELP?**

The MSC OVERSEAS LOAN FUND is available for students interested in overseas travel.

Information, applications & interview sign-ups at secretary's desk in Rm. 216 MSC. Sign up by February 19.

Interviews will be conducted February 20-21.

## MSC TRAVEL

**HOW ABOUT LIVING WITH A FAMILY IN EUROPE, ASIA, OR AFRICA?**

Find out about the EXPERIMENT IN INTERNATIONAL LIVING on Thursday, February 22 at 7:30 p.m. in Room 205, MSC. For more information, contact Rusty Phelps, MSC Travel Committee, at 845-1515 or in Room 216, MSC.

## what's up

Tuesday

**PRE-MED, PRE-DENT SOCIETY:** Members of the admission committee from Baylor Medical School will be in Room 113, BSBE, at 7:30 p.m. There will be a reception and refreshments afterward.

**AMERICAN HUMANICS STUDENT ASSOCIATION:** Joe Yoke, scout executive for Bay Area Council, will speak on "Time Management" at 6 p.m.

**COLLEGIATE FFA:** Dean Dwayne Suter will speak at 7:30 p.m. in Room 110, HECC.

**TEXAS ENERGY EXTENSION SERVICE:** Tom Borski will speak on "Energy Efficient Practice in New Home Construction" at 7 p.m. in Room 109, A&M Consolidated High School.

**MSC ARTS COMMITTEE:** Presents "The Poetry of Gerard Malanga" at 8 p.m. in Rudder Forum with the English department. Admission is free and there will be a reception following in the MSC Gallery.

**MEDICAL TECHNOLOGY SOCIETY:** There will be a program by Christine Thompson, Director of Spohn School of Medical Technology, at 7:30 p.m. in Room 137A, MSC.

**ENGLISH SOCIETY:** Lloyd Lyman, director of TAMU University Press, will discuss publishing at 7 p.m. in Room 137, MSC.

**PANHANDLE HOMETOWN CLUB:** Will meet at 7:30 p.m. in Room 139, MSC.

**ENGINEERING TECHNOLOGY SOCIETY:** There will be an election of officers and plans will be made for the All-Night Fair at 7:30 p.m.

**AGGIE CINEMA:** "The Count of Monte Cristo," the classic tale of riches and revenge as a young sailor, unjustly imprisoned in a dungeon, escapes to discover fabulous treasure and fortune, will be shown at 8 p.m. in Room 201, MSC. (C)

**PLACEMENT OFFICE:** Graduating seniors who wish to interview for the following companies may begin signing up today for interviews on Feb. 27: Action-Peace Corp., Allen-Bradley Co., Amoco Chemical, Amoco Production Co., Central Distributors Inc., Electronic Data Systems, ESD Co., Gulf States Utilities Co., Harris Corp., Hydral Co., Inspiration Consolidated Copper Co., Michigan-Wisconsin Pipeline, Morrison Knudson, J.C. Penney, Production Credit Association, RSD Co., Schlumberger, Southwest Life Insurance Co., Tom Brown Inc.

Wednesday

**ALPHA ZETA:** There will be an initiation and information meeting 7:30 p.m. in Room 207, HECC. Those who wish to join the National Agriculture and Service Fraternity must have had 6 hours of Agriculture at Texas A&M or (if a transfer student) have had 30 hours at Texas A&M, and must a GPR of at least 2.8.

**BASEMENT COFFEEHOUSE:** There will be a general meeting and auditions at 7:30 p.m. in the Coffeehouse.

**BRIDGE CLUB:** Will meet at 7:15 p.m. in the MSC. Check screen for room number.

**PHILOSOPHY CLUB:** A film will be shown and discussed at 7 p.m. in Room 203, Harrington.

**MANAGEMENT SOCIETY:** There will be a Valentine's Day party in the Treehouse Apartments Party Room at 8 p.m.

**WRESTLING:** The Texas A&M Wrestling Team will wrestle Richard Junior College and Southwest Texas State University at 7 p.m. in DeWare Field House.

**BASKETBALL:** The men's team will play TCU in Fort Worth. The women's team will play Panola Junior College at 7 p.m. in C. Rollie White Coliseum.

**SAFETY EDUCATION:** The Safety Education Program at Texas A&M will sponsor an Adult Driver Education course during March. For more information contact Tricia Lynch at 845-3020 by Feb. 16.

**AGGIE CINEMA:** "The Edge," the ultimate sports adventure film which explores the thrills of man's most exotic sports featuring skiing, reef-diving, surfing, mountain climbing, hang-gliding, kayaking and ice climbing, will be shown at 8 p.m. in Room 201, MSC.

**CO-OP FAIR:** A "Co-op Fair" for Texas A&M students considering the university's cooperative education will be from 9 a.m. to 5 p.m. Representatives from the various colleges will be located in the following areas: Science — MSC corridor, Architecture and Environmental Design — Langford Center main hall, Agriculture — Ag Hall first floor and Langford Center first floor, Engineering — Zachry main hall, Liberal Arts — Harrington Center first floor, Biomedical Sciences — Veterinary Medicine Administration Building third floor.

**PLACEMENT OFFICE:** Graduating seniors who wish to interview for the following companies may begin signing up today for interviews on Feb. 28: Action-Peace Corp., American Can Co., Amoco Production Co., Bank of the Southwest, Cessna Aircraft, Dow Chemical, First City National Bank, Fort Worth National Bank, Honeywell Inc., Hughes Tool Co., Inspiration Consolidated Copper Co., Loyd Electric Co., Pratt & Whitney Aircraft Group, Production Credit Association, St. Paul Fire & Marine Insurance Co., Schlumberger (Research and Development), Schlumberger Well Services, Seismograph Services Corp., Timberline Systems, Kurt Salmon.

Thursday

**CIRCLE K CLUB:** Will meet at 6:30 p.m. in Room 501, Rudder Tower.

**TAMU FENCING CLUB:** Will meet at 7:30 p.m. in Room 216, C. Rollie White Coliseum.

# THE MSC HOSPITALITY COMMITTEE

is Proud to present

**Spring Fashions by Sakowitz**

Modeled by 38 A&M models.

Wednesday, March 7 Rudder Theatre

1<sup>00</sup> Students 2<sup>00</sup> Non Students

Tickets may be picked up at the MSC box office begin Feb. 15.

## MSC TRAVEL

Snow Ski Taos

MARCH 9-17

\$245 INCLUDES:

Charter bus transportation  
Motel-type lodging  
6 days lift tickets  
Shuttle between lodge & slopes



SIGN UP JAN. 25 IN RM. 216 MSC.

\$50 DEPOSIT REQUIRED