

**BUSIEK AGENCY**  
 REAL ESTATE • INSURANCE  
 F.H.A.—Veterans and Conventional Loans  
**FARM & HOME SAVINGS ASSOCIATION**  
 Home Office: Nevada, Mo.  
 3523 Texas Ave. (in Ridgcrest) 846-3708

Call 822-1441  
 Allow 20 Minutes  
 Carry Out or Eat-In  
**THE PIZZA HUT**  
 2610 Texas Ave.

# Ag, SMU Baseballers Begin SWC Season Here Friday

By JOHN PLATZER  
 Coach Tom Chandler's Aggie baseballers begin Southwest Conference play Friday with a doubleheader at 1:30 against the Southern Methodist Mustangs in Kyle Field.  
 The Aggies completed their pre-conference schedule Tuesday with a 12-3 victory over Trinity in San Antonio. The win was A&M's fourth of the year without a defeat.  
 Doug Rau, Dave Benesh and Charles Kelley shared the Aggie pitching duties against Trinity as

each hurled three innings. Rau, who got the win, will start Friday's first game with Benesh, a junior from Houston, scheduled to go the second game of the twinbill.  
 SMU stays in College Station Saturday for the windup of the three game series between the two squads. Kelley, a freshman from West Columbia, is expected to start for A&M in Saturday's feature.  
 Coach Chandler said that his team has come along real well in hitting this season but that

they could use more pitching depth.  
 "Rau, Benesh and Kelley have done reasonably well," the A&M head coach said. "But we need pitching depth desperately."  
 SMU posted a 7-11 SWC mark last season but have most of their key players back this year.  
 "They have a very good veteran team that is just real tough to beat," Coach Chandler said of the Aggies' first SWC opponent.  
 Dave Ivy, a firstbaseman, and Chuck Mercer, a shortstop, are among the Methodists' top performers. Mercer, who Coach Chandler calls "one of the best in the league," was a first team All-SWC selection last season while hitting .286. Ivy was a second team pick while batting at a .348 clip last year.



Among the other top Mustangs are outfielder Wally Hoyle, a .262 hitter last season, third baseman Billy Jenkins and second baseman Bobby Lowe.  
 The Aggies are expected to counter with Larry Stelley, catcher; Boyd Hadaway, first base; Pete Maida, second base; Eddie Vaughan, third base; Jim Raley, shortstop; Dave Elmendorf, left field; Bob Long, centerfield; and Bob Arnold, right field.  
 Long pulled a muscle in his back in the Trinity win and is given a 50-50 chance to play against SMU by Coach Chandler.  
 Randy Moseley, a junior from Waxahachie, is labeled as SMU's best pitcher by Coach Chandler and he is sure to start one of the three games.

Missouri invades College Station next week as the Aggies host the Tigers on Tuesday and Wednesday in Kyle Field.

**CZECH AND CHECKMATE**  
 Canada's Chuck Lefley is upended by Czech defenseman Frantisek Popsipil during an ice hockey match in the world championships at Stockholm, Sweden, Wednesday. The Czechs whipped the Canadians, 6-1. (AP Wirephoto)

# AIRLINE

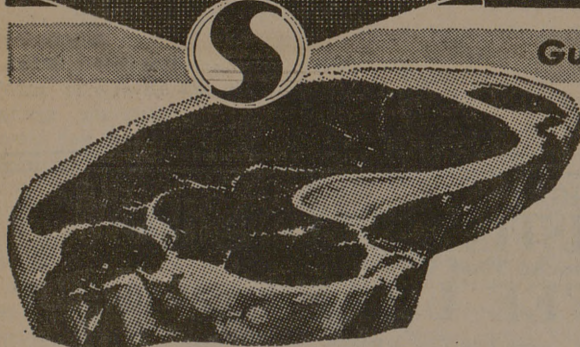
Tickets - Reservations  
 Instant Reservations by Computer  
 Free Delivery  
 "A Complete World-Wide Travel Service"

846-3773

BEVERLEY BRALEY TOURS-TRAVEL MSC LOBBY

## SAFeway LOW PRICES EVERY DAY Plus SPECIALS!

Guaranteed Meats... Always at Safeway!



**Standing Rib Roast**  
 Naturally Aged Heavy Beef  
 Large End, USDA Choice Grade Heavy Beef Unconditionally Guaranteed  
**-Lb. 89¢**  
**Rib Steak** USDA Choice Grade Heavy Beef **-Lb. 98¢**  
**Rump Roast** Baby Beef **-Lb. 85¢**  
**Boneless Brisket** Baby Beef **-Lb. 79¢**  
**Pork Roast** Fresh, Boston Butt **-Lb. 53¢**

**Sirloin Steak**  
 Baby Beef, Lean, Juicy and Tender! Compare Safeway Waste-Free Trim **-Lb. 88¢**

**Round Steak** Baby Beef, Full Cut, Tenderized, Boneless—Lb. 98¢ **-Lb. 88¢**  
**Rib Steak** Baby Beef, Tender, Full of flavor! **-Lb. 89¢**  
**T-Bone Steak** Baby Beef, Tender & Juicy! **-Lb. \$1.05**  
**Pikes Peak Roast** Boneless, Baby Beef **-Lb. 89¢**  
**Boneless Roast** \*Chuck or \*Shoulder, USDA Choice Grade Heavy Beef **-Lb. 89¢**  
**Arm Roast** USDA Choice Full Cut Grade Heavy Beef **-Lb. 79¢**  
**Top Sirloin Steak** Boneless, USDA Choice Grade Heavy Beef **-Lb. \$1.49**



**FRYERS**  
 USDA Inspected Grade "A" Everyday Low Price!  
 Whole **-Lb. 29¢**  
 (Cut-Up Fresh or Frozen **-Lb. 35¢**)  
**Leg Quarters** USDA Inspected **-Lb. 39¢**  
**Breast Quarters** USDA Inspected **-Lb. 45¢**  
**Sliced Bacon** Safeway **1-Lb. Pkg. 69¢** Plastic  
**Armour Bacon** Armour's Star Mira Cure **1-Lb. Pkg. 73¢** -Each 10¢  
**Thick-Sliced Bacon** Safeway **2-Lb. Pkg. \$1.35**

SHOP and COMPARE... Prove It to Yourself!!

**Soft Drinks**  
 Cragmont  
 \*Regular or \*Diet  
**Quart Bottle 10¢**  
 Safeway Special!  
**Vienna Sausage**  
 Libby's  
**5 4-oz. Cans \$1**  
 Safeway Special!  
**Dust Pans**

**Detergent**  
 Parade, Washday favorite!  
 49-oz. Box **49¢**  
 Safeway Big Buy!

**Green Giant Corn**  
 Cream Style, Golden  
 17-oz. Can **19¢**  
 Safeway Special!

**Baby Food**  
 Heinz, Strained Assorted \*Fruits or \*Vegetables  
 Reg. Jar **7¢**  
 Safeway Big Buy!

**Corn Flakes**  
 Kellogg's (18-oz. Pkg. 39¢)  
 12-oz. Pkg. **29¢**  
 Safeway Special!

**Bleach**  
 White Magic  
 Gallon Plastic **38¢**  
 Safeway Big Buy!

**Tomato Soup**  
 Town House  
 10 3/4-oz. Can **10¢**  
 Safeway Big Buy!

**Pork & Beans** Van Camp **16-oz. Can 14¢** Why Pay More?  
**Campbell's Beans** With Ground Beef **16-oz. Can 30¢** Why Pay More?  
**Armour's Chili** Texas Style **15-oz. Can 55¢** Why Pay More?  
**Chicken Chow Mein** LaChoy **14-oz. Can 67¢** Why Pay More?  
**Spaghetti** Franco-American Prepared **15 1/4-oz. Can 16¢** Why Pay More?  
**Austex Beef Stew** **24-oz. Can 63¢** Why Pay More?



**Bananas 10¢**  
 Golden Ripe! Munching good! Special! **-Lb. 10¢**

**Check Frozen Food Values!**  
**Waffles** Bol-air **5-oz. Pkg. 10¢** Why Pay More?  
**Enchilada Dinner** Circle T **3 12-oz. Pkg. \$1** Why Pay More?  
**Mexican Dinner** Circle T **3 14-oz. Pkg. \$1** Why Pay More?  
**Chili Pie** Frito **3 5 1/2-oz. Pkg. \$1** Why Pay More?  
**Orange Juice** Scotch Treat From Florida **6-oz. Can 19¢** Why Pay More?  
**Cream Pies** Bol-air, Assorted **14-oz. Pkg. 29¢** Why Pay More?  
**Lemonade** Scotch Treat **6-oz. Can 10¢** Why Pay More?

**Compare Dairy Values!**  
**Buttermilk** 1/2-Gal. Carton **39¢**  
**Biscuits** Mrs. Wright's \*Sweet Milk or \*Buttermilk **8-oz. Can 8¢** Why Pay More?  
**Margarine** Coldbrook Solids **1-Lb. Pkg. 10¢** Why Pay More?  
**Butter** Shady Lane **1-Lb. Pkg. 79¢** Why Pay More?  
**Cottage Cheese** Lucerne All Styles **16-oz. Can 35¢** Why Pay More?

**Garden Supplies**  
**Lawn Fertilizer** Armour's, Old Black Joe (4-12-4) **-50-Lb. Bag \$1.69**  
**Soil Conditioner** Foot, 4-Cubic Foot Bag **-Each \$1.89**

**Tomatoes** Fancy, Vine Ripe! Large Slicers **-Lb. 29¢**  
**Red Potatoes** US No. 1 "A" **10-Lb. Bag 59¢**

**Grapefruit** Texas Ruby, Each **3 for 29¢**  
**Cabbage** Texas Grows, Crisp & Firm **-Lb. 7¢**  
**Red Apples** Delicious, Lunchbox Size **3-Lb. Bag 69¢**  
**Rome Apples** Red, Large, Extra Fancy **-Lb. 25¢**  
**Oranges** Valencia, Rich in Vitamins **4-Lb. Bag 49¢**  
**Pitted Prunes** Sunsweet **12-oz. Pkg. 49¢**  
**Cucumbers** Crisp **Each 2 for 25¢**  
**Bell Peppers** Each **2 for 25¢**

**Mixing Bowls**  
 Stainless Steel Vollrath  
 1 1/2-Quart Size **89¢**

**Pillsbury Flour**  
 Pillsbury's Best All-Purpose  
 5-Lb. Bag **49¢**  
 Safeway Special!

**GRANADA**  
 THIS WEEK'S FEATURE  
 Sheffield COFFEE CUP  
 with every 13 purchases **only 29¢**  
 \*Excluding tobacco, liquor and liquid dairy products.

Prices Effective Thurs., Fri. and Sat., Mar. 20, 21 and 22, in BRYAN  
 We Reserve the Right to Limit Quantities. No Sales to Dealers.  
**SAFeway**  
 © Copyright 1969, Safeway Stores, Incorporated.

### F-1 Wins Class B Wrestling Tourney

F-1 finished in first place in the Class B wrestling tournament in G. Rollie White Coliseum last week.  
 As a five-man team, three of their wrestlers finished third in their weight class and John Crews won the 137-pound class for his unit.  
 There was a three-way tie for second place between B-1, B-2 and Sqd. 1. B-1 had one champion in George McCarroll in the 137-pound class. H-1 had two champions Michael Bavaro in the 130-pound class and Roy Garner in the 145-pound class. Sqd. 1 did not have a champion but finished with three third places.  
 Other champions include John Smyth of Sqd. 11 in the 123-pound class, B. Compton of D-2 in the 145-pound class, John Childers of A-1 in the 152-pound class, Drew Beck of G-1 in the 160-pound class, Allan Leskimen of Sqd. 1 in the 191-pound class, and Lawrence Webber of D-1 in the 220-pound class.

perma-crease  
 Westbury Slacks  
**Dva Starnes**  
 university men's wear  
 229 University Drive, 113-6407  
 College Station, Texas 77843

THINKING OF DINING...  
 ... THINK  
**SBISA CASH CAFETERIA**  
 Monday through Friday  
 7:00 a. m. to 1:15 p. m.  
 Sundays - 11:00 a. m. to 1:15 p. m.

Hold your horses!  
**IMPORT CAR BUYERS**  
 Maverick's coming  
 April 17!  
**HOMETOWN MOTORS**  
**CADE MOTOR CO.**  
 1700 Texas Ave.  
 Phone 823-0044.

**No. 1**  
 In College Sales  
**Fidelity Union Life**  
 Insurance Company  
 303 College Main 846-8238