

# Biggest Talent Show Will Be Here Tomorrow

The Intercollegiate Talent show will give the biggest performance of its and A&M's history tomorrow night, with 16 acts from 14 schools, including three Horace Heidt talent show winners.

Dick Gottlieb, A&M former student and Houston television personality, will be master of ceremonies for the two-hour show, which will start at 8 p.m. in White coliseum.

Horace Heidt winners to be on the program are Miss Virginia Holm, singer from Texas Chris-

tion university, and Evie Cooper and Mike McGehee, a dance duo from Louisiana State university.

Other outstanding acts will be Dick Penner and Wade Moore, western singers from North Texas State college, Miss Elizabeth Holmes, a torch singer from the University of Texas, and a 23-girl dancing act from the University of Oklahoma. This act is titled simply, "Brrrrr."

A&M will be represented by Ted Steckl, guitar player who won the Aggie Talent show last

fall.

Tickets are on sale now at the main desk of the Memorial Student Center, and will be on sale at the door. They are \$1 for

general admission and \$1.50 for reserved seats.

Gottlieb, who was manager of radio station WTAW while he was a student here, is master of

ceremonies for KPRC-TV's "Matinee" show.

Gottlieb has been president of the Houston A&M club, and has received many honors for his

charity work, including work with the Salvation Army, the TB drive, the March of Dimes, and the Variety club.

He has been directly connected

with the raising of about one and a half million dollars for charity in the last five years.

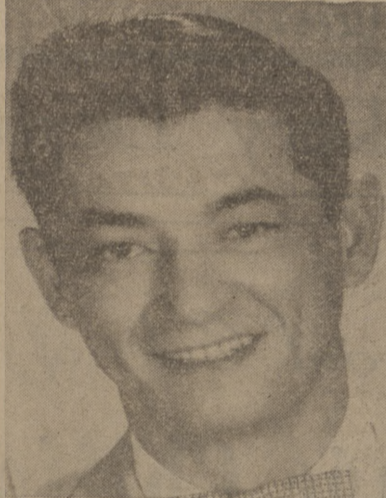
The Aggeland orchestra will accompany all acts of the show.



**PICKIN' AND SINGIN'**—Dick Penner and Wade Moore, North Texas State college students, will present their western songs as one of the acts of the Intercollegiate Talent show. They won first place at Baylor's talent show last weekend.

**?**  
**WORRIED**  
Here's the answer to your problem  
BRING YOUR CLOTHES TO THE  
**CAMPUS CLEANERS**

- Fast Service
- Expert Workmanship
- Use Our Sub-Station
- For Convenience



**EMCEE** — Dick Gottlieb, former A & M student and now a Houston television personality, will be master of ceremonies for the Intercollegiate Talent show tomorrow night.



**USED TRUCKS**  
ALL MAKES • ALL MODELS

- 1953 Ford 1/2 ton stake body, one owner with heater, Lic No. 2X 341 . . . \$1095.00
- 1952 Jeep pickup with four wheel drive, Lic No. 6C 270 . . . \$ 550.00
- 1951 Ford F250 express, Lic No. 2X 356 . . \$ 495.00
- 1950 Chevrolet Pickup, Lic No. 5H 9978 \$ 475.00
- 1949 Studebaker Pickup . . . . . \$ 195.00

**CADE MOTOR COMPANY**

YOUR FRIENDLY FORD DEALER  
Texas Ave. & Burnett St. — Telephone 2-1507  
208 W 24th St. — Telephone 2-7136

# Weingarten's

**BETTER FOODS FOR LESS!**

THESE VALUES GOOD THURS., FRI., AND SATURDAY IN OUR BRYAN STORE—SOUTH COLLEGE AT HIWAY 6

<b>CHUM SALMON</b>	Ship Ahoy	No. 1 Can	<b>29c</b>
<b>STRAWBERRY</b>	Preserves Food Club	12 oz. jar	<b>19c</b>
<b>TOMATOES ELNA</b>	Standard Pack	2 No. 303 Cans	<b>15c</b>
<b>MARGARINE</b>	Golden Top Spread	lb. . . . .	<b>10c</b>
<i>For Fluffy Biscuits</i> <b>BISQUICK</b>		40 oz. pkg.	<b>39c</b>
	<i>Top Frost, Frozen</i> <b>CUT CORN</b>		10 oz. case <b>10c</b>

<b>ORANGES</b>	Valencia, U. S. No. 1 Large, Juicy	Dozen . . . . .	<b>29c</b>
<b>ARTICHOKES</b>	Fresh, Nice Size	Each . . . . .	<b>19c</b>
<i>U. S. No. 1 Fresh</i> <b>PINEAPPLE</b>		each	<b>25c</b>
	<i>U. S. No. 1 Texas, Golden</i> <b>CARROTS</b>	2 16 oz. pkgs.	<b>17c</b>

<b>SLAB BACON</b>	Rath's Blackhawk, Sugar Cured, Rindless	lb.	<b>29c</b>
<b>PORK ROAST</b>	Semiboneless Fresh, Boston Butt,	lb.	<b>35c</b>
<i>Fresh, First cut</i> <b>PORK CHOPS</b>		lb.	<b>39c</b>
	<i>Fresh, small, lean and meaty</i> <b>PORK RIBS</b>		lb. <b>39c</b>

<b>BOILED HAM</b>	Lean, Imported Danish Ham	lb.	<b>98c</b>
<b>CHEESE</b>	American, Processed. By the piece . . . . lb.		<b>39c</b>
<i>Food Club Cheese Food</i> <b>CHED-R-TREAT</b>		2 lb. loaf	<b>65c</b>
	<i>Armour Star, Large, Sliced</i> <b>BOLOGNA</b>		lb. <b>39c</b>

<b>CHOCOLATE CAKE</b>	Two 7-inch golden layers, iced with fudge		<b>45c</b>
<b>FRUIT SHERBET</b>	Weingarten's own, Rich . . . . Qt.		<b>33c</b>
<b>BLUE BLADES</b>	GILLETTE	pkg. of 5	<b>15c</b>

★ Just A Few Of Many Big Buys ★