

Churches Set Services

Christian Science Services
A leading point which will be brought out in the lesson-sermon in the 11 a.m. church services is that to sincerely live and actively practice the love that God gives us is to be obedient to God, and is the basis of healing as practiced in Christian Science.

The following selections from the lesson-sermon entitled "Love" will be read from the Bible and from "Science and Health with Key to the Scriptures" by Mary Baker Eddy: "My little children, let us not love in word, neither in tongue; but in deed and in truth," I John, 3:18.

"The letter of science plentifully reaches humanity to-day, but its spirit comes only in small degrees. The vital part, the heart and soul of Christian Science, is Love. Without this, the letter is but the dead body of science,—pulseless—cold, inanimate."

The Golden text is from Psalms: "How excellent is thy loving kindness, O God! The children of men put their trust under the shadow of their wings."

Church of Jesus Christ of Latter Day Saints
Sunday services will be at 10 a.m. in the YMCA chapel.

St. Mary's Catholic Chapel
Sunday masses will be at 7, 8:30 and 10 a.m. Confessions are from 6:30 to 7:30 p.m. Saturday and before masses. Coffee and Doughnuts will be served in the Catholic Student center after the 8:30 a.m. mass.

St. Thomas Episcopal Chapel
Holy communion will be at 8 a.m. and church school at 9:30. Morning prayer and the sermon service will be at 11 a.m.

A&M Christian Church
Coffee hour will be at 9:15 a.m. Sunday and Sunday school at 9:45. Morning services will be at 11. The Christian Youth Fellowship will meet at 5 p.m. Sunday.

College Heights Assembly of God
Sunday school will be at 9:45 a.m. and the worship services at 11. The Christ ambassadors will meet at 6:30 p.m. Sunday, and the evening service will be at 7:30.

Church of Christ
Sunday school will be at 9:45 a.m. and the morning services at 10:45. There will be two series of sermons Sunday on baptism. The morning sermon is entitled "What It Means to Baptize is Non-essential", and the 7:15 p.m. service, "What It Means to Baptize is Essential". The Aggies and young

people's class will meet at 6:15 p.m.

A&M Methodist Church
Sunday school will be at 9:45 a.m. and the morning worship at 10:55. The Methodist youth Fellowship meets at 6 and 6:45 p.m. Sunday.

The Wesley foundation will have Sunday school at 9:45 a.m. in the foundation building.

Faith Evangelical and Reformed Church
Sunday school will be at 9:15 a.m. and the morning service at 10:30. The evening service will be at 7:30 Sunday.

Bethel Lutheran Church
There will be a membership lecture at 7:30 p.m. Friday. The junior confirmation class will meet at 9 a.m. Saturday.

Sunday school will be at 9:30 a.m. and the morning worship at 10:45.

A Circuit Stewardship meeting will be held at Trinity church in Navasota from 3 to 9:30 p.m. Sunday. Supper will be served for 50 cents per person. The meeting will serve to help more members become active in the program of their congregations. All officers of the congregation and their families as well as all interested members are urged to attend. The Rev. William C. Peterson said. The meeting's program will be conducted by the Rev. A. F. Droegemuller of Houston, member of the District Stewardship Board, and former pastor of the Bethel congregation.

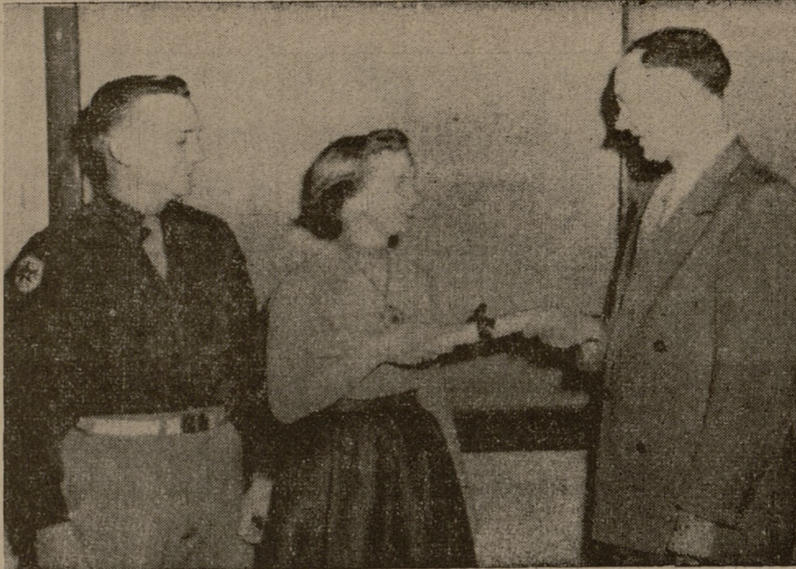
Our Saviour's Lutheran Church
Sunday school will be at 9:30 a.m. and the morning worship at 10:45. "The Lord Reigneth" will be the sermon topic. Tuesday at 7:30 p.m. there will be a meeting of the church council.

First Baptist Church
The Rev. R. D. Longshore announced that there will only be one worship hour Sunday morning. This will be the 10:50 hour and Sunday school will be held at 9:40 a.m. The sermon topic will be "Returning to the Old Paths". The evening service will be at 7:15.

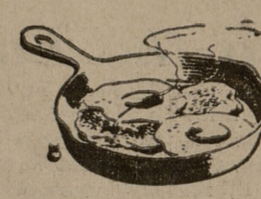
Jack Tartar and Keith Savage will speak at the Baptist Student union vesper service at 7 p.m. Friday on "The Doctrine of Sanctification." Cliff Harris, BSU director, announced that the vesper service will be twenty-five minutes long.

A&M Presbyterian Church
Breakfast will be at 8 a.m. Sunday and Sunday school will be at 9:45. "The Family, Church and the Community" will be the sermon topic for both the 8:45 and 11 a.m. morning services. The Presbyterian Student league will meet at 6:30 p.m. Sunday and the Bible class led by the Rev. Norman Anderson will meet at 7:30 and study the Book of Acts.

Church of The Nazarene
Sunday school will be at 10 and the morning worship service at 11. The Nazarene Young People's society will meet at 7 p.m. Sunday, and the Evangelistic service will be at 7:45.



APPRECIATION—Mrs. Betty Uzzell was presented a "Pushing Hubby Through" diploma by C. W. Crawford, right, head of the mechanical engineering department, at the last meeting of the ME Wives club. The diplomas are given in recognition of the understanding, cooperation and help that the graduates' wives have given their husbands during their school years. Mrs. Uzzell's husband, David Lee, was graduated last week, receiving his degree in ME. The Uzzells are from Wharton.



**2 EGGS, BACON
JELLY & COFFEE**

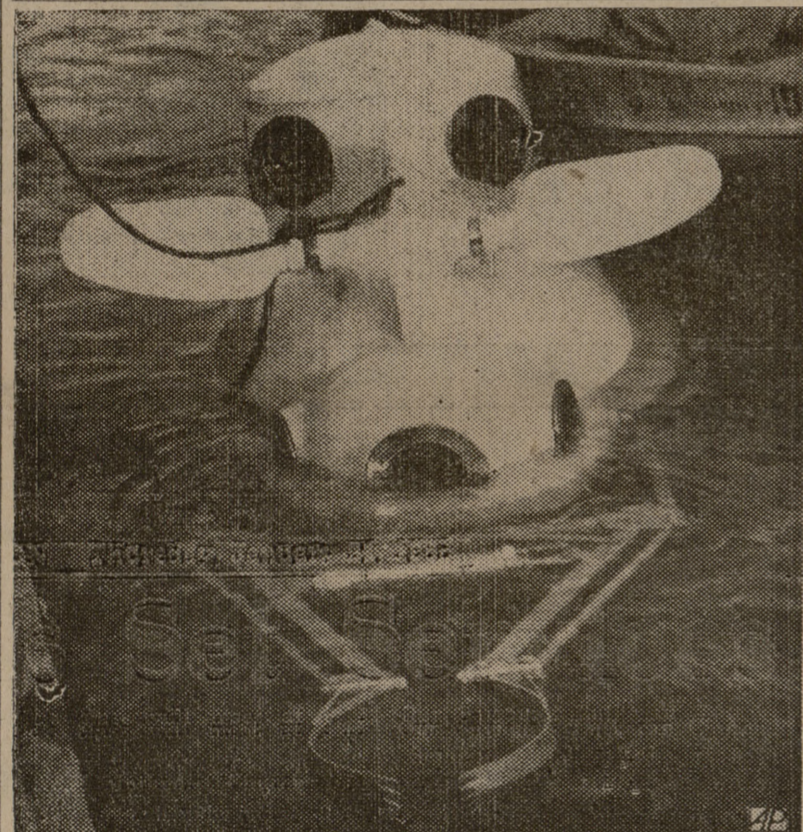
SPECIAL 49c

**BLACK'S
RIDGECREST PHARMACY**

3511 Hwy. 6 Bryan

The Church... For a Fuller Life... For You...

CALENDAR OF CHURCH SERVICES	
A&M CHURCH OF CHRIST 9:45 A.M.—Bible Classes 10:45 A.M.—Morning Worship 7:15 P.M.—Evening Service	ST. THOMAS EPISCOPAL CHURCH 8:00 A.M.—Holy Communion 9:30 A.M.—Church School 9:30 A.M.—Morning Prayer and Sermon 11:00 A.M.—Morning Prayer and Sermon
COLLEGE STATION BAPTIST CHURCH 9:45 A.M.—Sunday School 10:50 A.M.—Morning Worship 7:00 P.M.—Training Union 8:00 P.M.—Evening Worship	A&M CHRISTIAN CHURCH 9:45 A.M.—Church School 11:00 A.M.—Morning Worship
BETHEL LUTHERAN CHURCH (Missouri Synod) 808 S. College Ave. Bryan, Texas 9:30 A.M.—Church School 10:45 A.M.—Morning Worship	OUR SAVIOUR'S LUTHERAN CHURCH 9:45 A.M.—Church School 10:45 A.M.—Morning Worship
COLLEGE HEIGHTS ASSEMBLY OF GOD 9:45 A.M.—Sunday School 11:00 A.M.—Morning Worship 6:30 P.M.—Young People's Service 7:45 A.M.—Evening Worship	A&M PRESBYTERIAN CHURCH 9:45 A.M.—Sunday School 11:00 A.M.—Morning Worship Service 6:30 P.M.—Student League and Fellowship
CHURCH OF THE NAZARENE 10:00 A.M.—Sunday School 11:00 A.M.—Morning Worship 6:45 P.M.—Young People's Service 7:30 P.M.—Fellowship Service	CHRISTIAN SCIENCE SOCIETY New Building, Cor. Patricia and Boyette 11:00 A.M.—Sunday School and Church
ST. MARY'S CHAPEL 9:00 A.M.—Mass	A&M METHODIST CHURCH 9:45 A.M.—Sunday School 10:50 A.M.—Morning Worship 6:30 P.M.—MYF Meeting
	FAITH EVANGELICAL AND REFORMED CHURCH 9:15 A.M.—Sunday School 10:30 A.M.—Morning Worship



MULE EARS—This strange creature is a two-man submarine that is currently patrolling the waters of Lake Texoma. It is designed to pick up objects off the bottom. The "mule ears" are diving fins. It is powered by battery-driven electric motors. The sub made its first long test dive last week. "It works," said the designers, "but there are some bugs to be eliminated."

Social Whirl

Tuesday
The Campus Study club will meet at 3 p.m. in the YMCA and have W. Armstrong Price, professor of geological oceanography as guest speaker. Hostesses will be the Americanism and American Home committee.

Wednesday
The Newcomer's Bridge and Canasta party will be held at the home of Mrs. Joe Davis, 410 Throckmorton, at 2 p.m. Hostess chairman is Mrs. Robert Stevenson.

Ever try this sauce over waffles, griddle cakes or French toast? To make it, heat a cup of honey with a couple tablespoons of butter or margarine.

How Christian Science Heals
"HOW A CHANGE IN THINKING HEALED TUBERCULOSIS"
WTAW (1150 Ke.)
Tuesday 9:45 a.m.

College requirements

● SAVE YOUR MONEY
● SAVE YOUR CLOTHES
CAMPUS CLEANERS



**HERBERT TAREYTON
CIGARETTES**

Filter Tip
MODERN SIZE

FILTER TIP TAREYTON
Gives You True Tobacco Taste
And Real Filtration, Too!

PRODUCT OF The American Tobacco Company



ALL MIXED UP

Johnny's all mixed up! His coat rumpled and twisted! Buttons all wrong!

Do you know what Johnny's trouble is? He got a bad start. He poked the first button in the wrong hole.

You see, that first button is all-important. Unless Johnny gets that one right, the other buttons will never follow in pattern.

Johnny's first years are all-important, too. Without the proper Christian training, Johnny will get all mixed up inside. He will learn bad habits, dishonesty, untruthfulness. His life will become rumpled and twisted.

Bring your Johnny to Sunday School and Church. Help Johnny to a right start. The rest of his life will follow in the Christian pattern.

THE CHURCH FOR ALL... ALL FOR THE CHURCH

The Church is the greatest factor on earth for the building of character and good citizenship. It is a storehouse of spiritual values. Without a strong Church, neither democracy nor civilization can survive. There are four sound reasons why every person should attend services regularly and support the Church. They are: (1) For his own sake, (2) For his children's sake, (3) For the sake of his community and nation, (4) For the sake of the Church itself, which needs his moral and material support. Plan to go to church regularly and read your Bible daily.

Day	Book	Chapter Verses
Sunday	Genesis	1 1-13
Monday	Genesis	4 1-9
Tuesday	Genesis	25 24-34
Wednesday	Mark	10 17-27
Thursday	Luke	12 13-34
Friday	Acts	17 22-34
Saturday	I Thess'l'n's	4 1-12

Copyright 1955, Keister Adv. Service, Staunton, Va.

City National Bank

Member
Federal Deposit
Insurance Corporation

BRYAN

Bryan Building & Loan Association

BRYAN

The Exchange Store

"Serving Texas Aggies"

Extra Good Dairy Products Milk-Ice Cream 2-1329

Sanitary FARM DAIRIES

MILLER'S Hardware

PHONE 4-1145

Lilly

Lilly Ice Cream Co. Bryan

MELLO CREAM
"A Nutritious Food"

N
AGG
tak
The
Con
Can
Fo
Con
alleir
Conso
starte
off of
the s
will e
the ol
as a
The
discus
about
of the
and li
keep
ing f
walk
Pr
The
reeds
ball to
ed ry
projec
\$294.5
tribut
son, h
baske
Ch
To
The
preser
mous
Orpha
The
direct
17-ye
A. Hu
and T
the ch
rent
The
and s
select
girls'
all co
main
The
every
David
A&M
Agg
Tw
The
March
favori
to Ha
Aggie
The
be fi
inch
length
senior
by fi
glossy
ers, h
Apr
and
picked
public
fore s
semes
Sen
taken
ond s
tures
said.